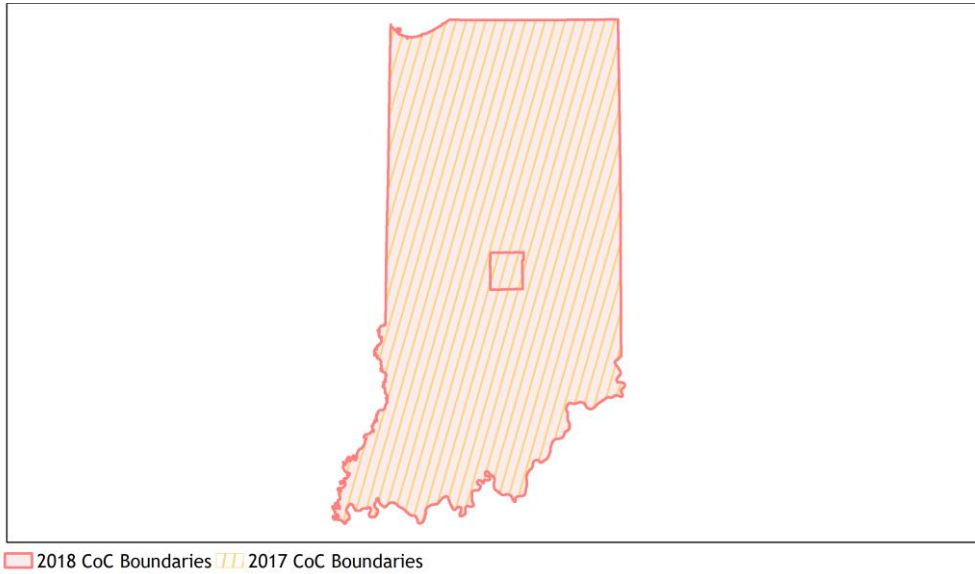
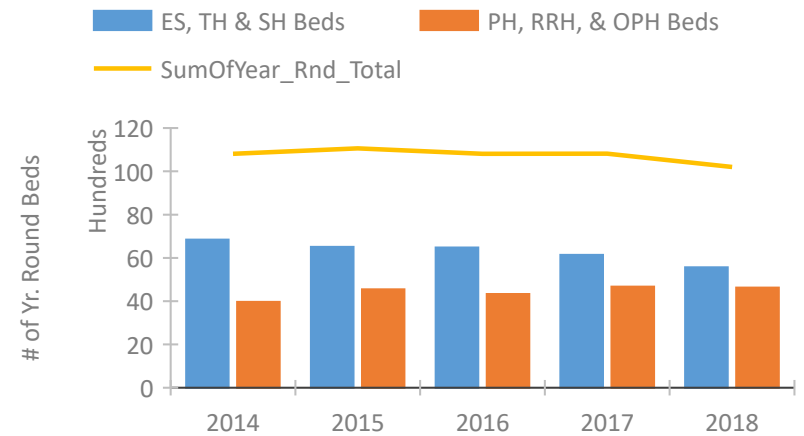


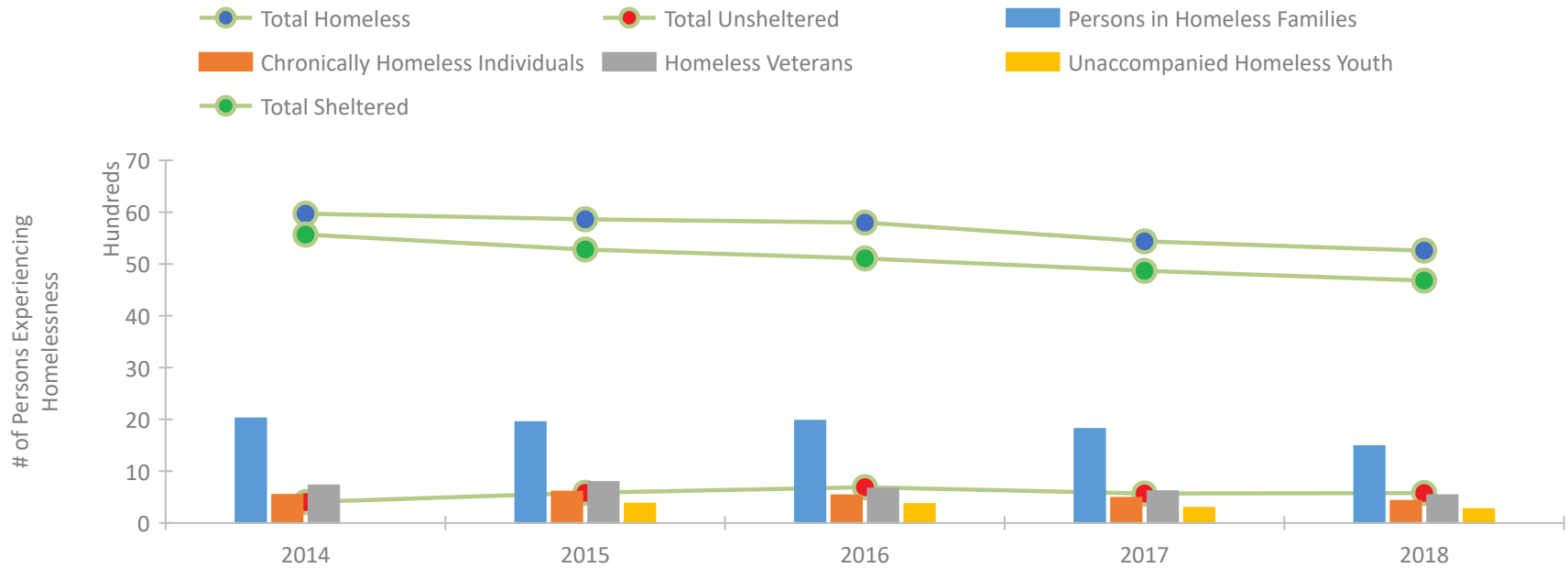
Indiana Continuum of Care Performance Profile



Housing Inventory Count by Program Type



Homeless Population – Point-in-Time (PIT) Count

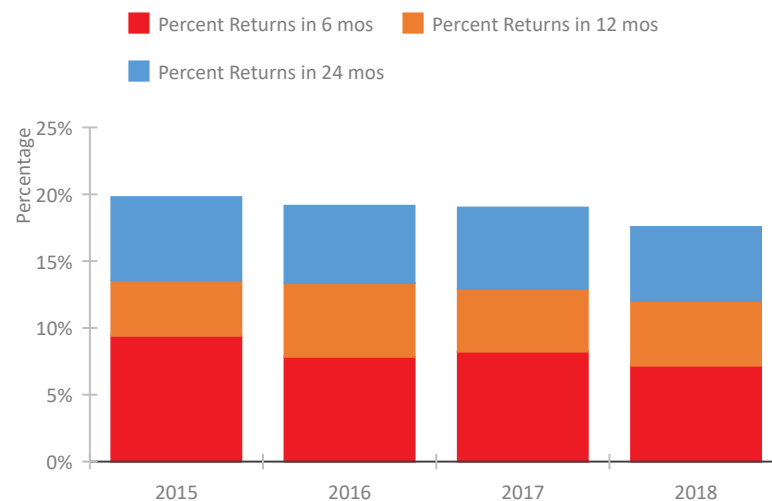


Indiana Continuum of Care Performance Profile

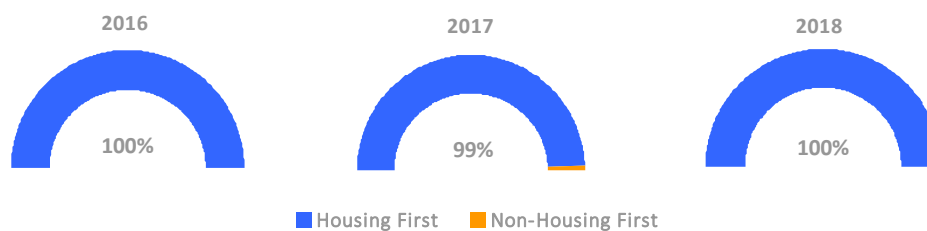
Exits to Permanent Housing by Program Type



Returns to Homelessness Over Time



Proportion of Housing First Projects by Year



Number of Projects by Year

	2016	2017	2018
Housing First Projects	102	95	93
Non-Housing First Projects	0	1	0

Data Summary: Indiana

Point-In-Time Count Summary

	2014	2015	2016	2017	2018	2017-18 Change	% Change
Number of Sheltered Persons in Families	2,008	1,927	1,949	1,787	1,474	-313	-18%
Number of Unsheltered Persons in Families	10	22	25	28	8	-20	-71%
Number of Sheltered Individuals	3,539	3,317	3,122	3,053	3,183	130	4%
Number of Unsheltered Individuals	392	561	665	540	570	30	6%
Total Homeless Persons	5,949	5,827	5,761	5,408	5,235	-173	-3%
Number of Sheltered Families	651	631	604	567	478	-89	-16%
Number of Unsheltered Families	3	5	5	9	3	-6	-67%
Number of Total Families	654	636	609	576	481	-95	-16%
Sheltered Chronically Homeless Individuals	433	450	319	432	381	-51	-12%
Unsheltered Chronically Homeless Individuals	109	158	215	54	47	-7	-13%
Total Chronically Homeless Individuals	542	608	534	486	428	-58	-12%
Sheltered Veterans	687	726	614	569	491	-78	-14%
Unsheltered Veterans	38	64	49	46	48	2	4%
Total Veterans	725	790	663	615	539	-76	-12%
Sheltered Unaccompanied Youth (up to 24)	--	333	294	252	223	-29	-12%
Unsheltered Unaccompanied Youth (up to 24)	--	40	71	42	45	3	7%
Total Unaccompanied Youth (up to 24)	--	373	365	294	268	-26	-9%

System Performance Measures Summary

	2014	2015	2016	2017	2018	2017-18 Change	% Change
Rate People Return to Homelessness in 6 Months	N/A	9.4%	7.8%	8.2%	7.2%	-1%	N/A
Number of People who are Homeless for the First Time	N/A	11,965	11,358	9,966	13,711	3,745	37.6%
Rate People Exit from ES, SH, TH, and RRH to PH	N/A	46.6%	44.5%	43.6%	33.6%	-9.9%	N/A
Rate People in PSH and OPH Retain or Exit to PH	N/A	87.3%	94.8%	93.5%	95.0%	1.5%	N/A

Housing Inventory Count Summary

	2014	2015	2016	2017	2018	2017-18 Change	% Change
Emergency Shelter (ES)	3,796	3,715	3,918	3,988	3,823	-165	-4%
Safe Haven (SH)	25	50	50	50	100	50	100%
Transitional Housing (TH)	3,021	2,746	2,511	2,104	1,645	-459	-22%
Permanent Supportive Housing (PSH)	2,947	3,171	3,631	3,667	3,631	-36	-1%
Rapid Re-Housing (RRH)	976	1,248	581	929	903	-26	-3%
Other Permanent Housing (OPH)	46	132	118	78	96	18	23%

Award Summary

	2014	2015	2016	2017	2018	2017-18 Change	% Change
Continuum of Care (CoC)	\$16,411,898	\$16,336,086	\$17,889,804	\$19,300,787	\$22,701,327	\$3,400,540	18%
Emergency Solutions Grants (ESG)	\$4,843,654	\$5,242,667	\$5,434,207	\$7,206,310	\$5,423,874	(\$1,782,436)	-25%
Youth Homelessness Demonstration Program (YHDP)	N/A	N/A	--	--	\$3,881,278	--	--