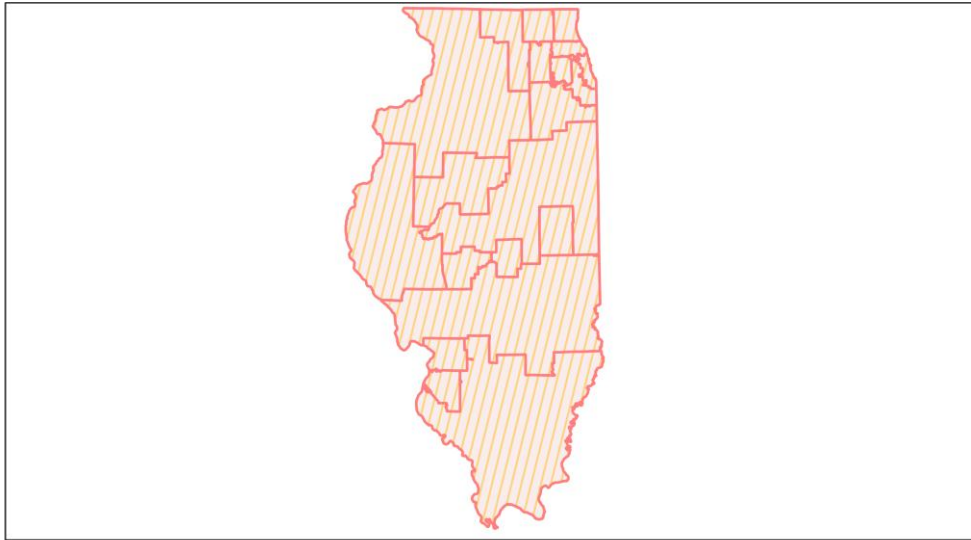
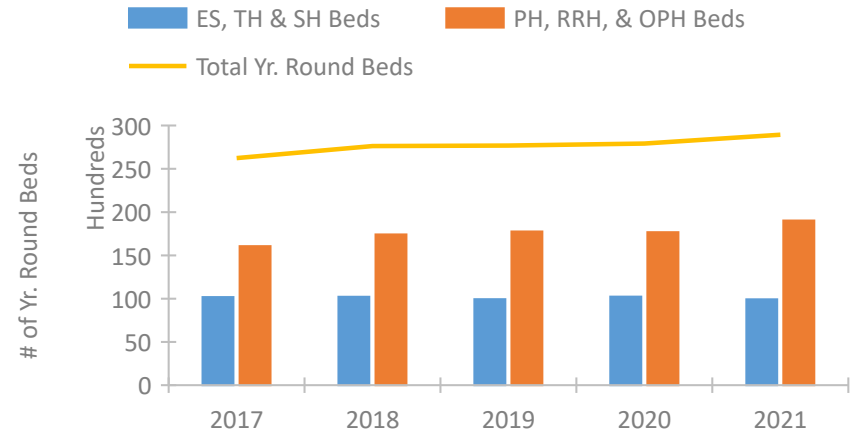


Illinois Continuum of Care Performance Profile

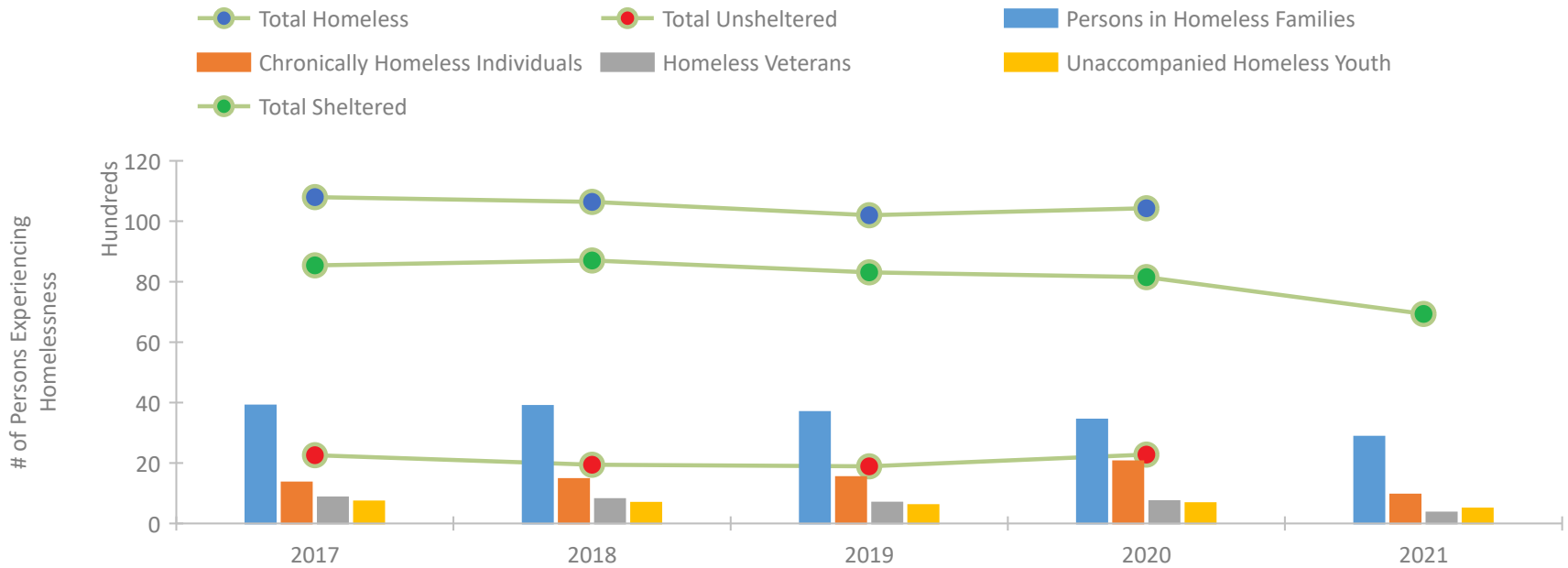


2021 CoC Boundaries 2020 CoC Boundaries

Housing Inventory Count by Program Type



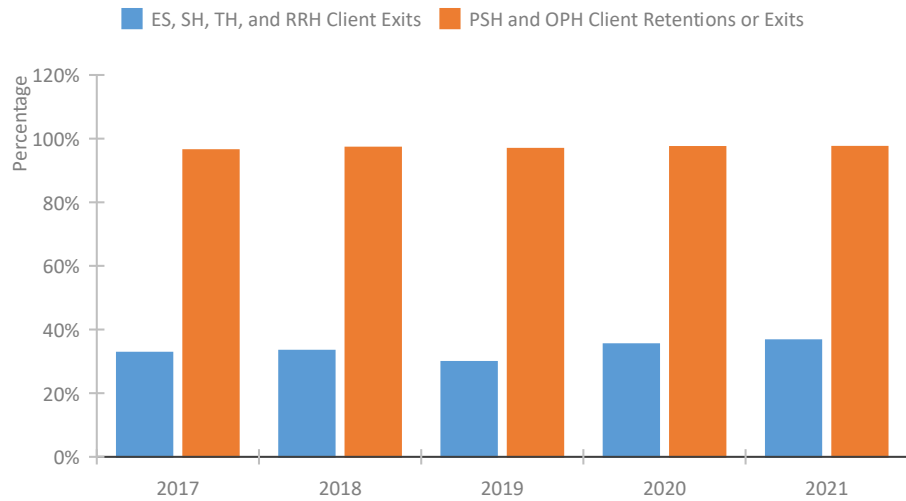
Homeless Population – Point-in-Time (PIT) Count*



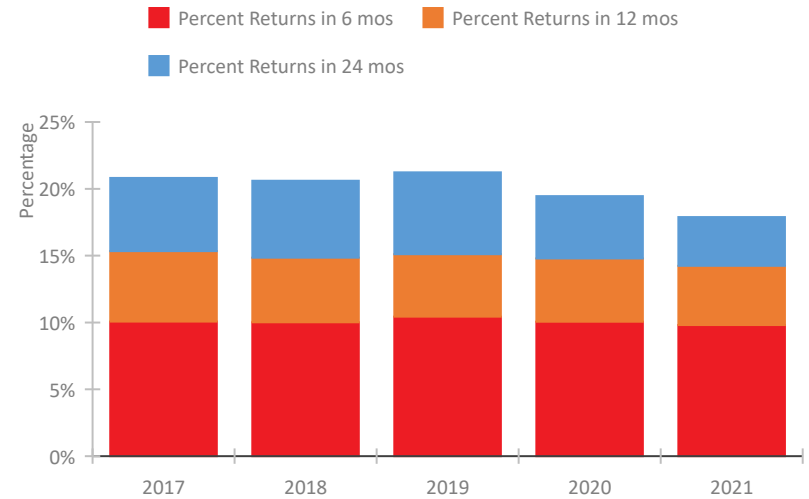
*In 2021, HUD gave communities the option to cancel or modify the unsheltered survey portion of their counts based on the potential risk of COVID-19 transmission associated with conducting an in-person survey. As a result, HUD has excluded the unsheltered population sub-totals and all unsheltered sub-population data for this reporting period. The user is cautioned that the unsheltered and total homeless counts reported here may be missing data.

Illinois Continuum of Care Performance Profile

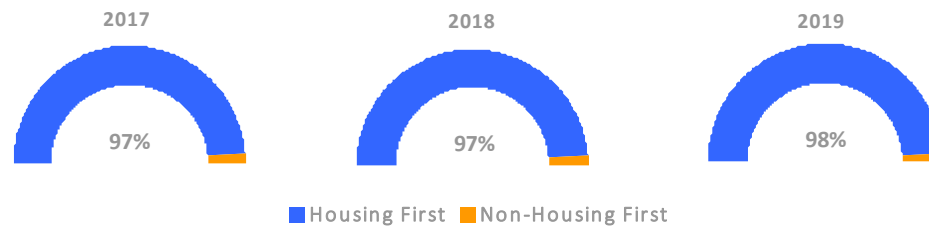
Exits to Permanent Housing by Program Type



Returns to Homelessness Over Time



Proportion of Housing First Projects by Year†



Number of Projects by Year

	2017	2018	2019
Housing First Projects	386	422	373
Non-Housing First Projects	10	11	9

†2021 Data unavailable at the time of report publication. In 2020 HUD awarded renewal projects noncompetitively, therefore no new data was collected and Housing First data remains the same from 2019 to 2020.

Data Summary: Illinois

Point-In-Time Count Summary*

	2017	2018	2019	2020	2021	2020-21 Change	% Change
Number of Sheltered Persons in Families	3,782	3,825	3,591	3,331	2,868	-463	-14%
Number of Unsheltered Persons in Families	122	66	95	105	0	-105	-100%
Number of Sheltered Individuals	4,759	4,876	4,719	4,822	4,065	-757	-16%
Number of Unsheltered Individuals	2,135	1,876	1,794	2,173	--	--	--
Total Homeless Persons	10,798	10,643	10,199	10,431	6,933	-3,498	-34%
Number of Sheltered Families	1,181	1,203	1,080	1,029	897	-132	-13%
Number of Unsheltered Families	47	20	25	34	--	--	--
Number of Total Families	1,228	1,223	1,105	1,063	897	-166	-16%
Sheltered Chronically Homeless Individuals	644	778	1,072	1,032	956	-76	-7%
Unsheltered Chronically Homeless Individuals	711	692	461	1,026	--	--	--
Total Chronically Homeless Individuals	1,355	1,470	1,533	2,058	956	-1,102	-54%
Sheltered Veterans	575	574	536	504	360	-144	-29%
Unsheltered Veterans	289	230	154	232	--	--	--
Total Veterans	864	804	690	736	360	-376	-51%
Sheltered Unaccompanied Youth (up to 24)	592	609	540	527	492	-35	-7%
Unsheltered Unaccompanied Youth (up to 24)	138	75	69	144	--	--	--
Total Unaccompanied Youth (up to 24)	730	684	609	671	492	-179	-27%

System Performance Measures Summary

	2017	2018	2019	2020	2021	2020-21 Change	% Change
Rate People Return to Homelessness in 6 Months	10.1%	10.0%	10.4%	10.1%	9.8%	-0.3%	N/A
Number of People who are Homeless for the First Time	26,538	24,957	25,149	17,102	17,307	205	1.2%
Rate People Exit from ES, SH, TH, and RRH to PH	32.7%	33.3%	29.8%	35.3%	36.6%	1.3%	N/A
Rate People in PSH and OPH Retain or Exit to PH	96.4%	97.1%	96.8%	97.3%	97.4%	0%	N/A

Housing Inventory Count Summary

	2017	2018	2019	2020	2021	2020-21 Change	% Change
Emergency Shelter (ES)	4,797	6,939	6,913	7,149	7,035	-114	-2%
Safe Haven (SH)	81	76	82	82	84	2	2%
Transitional Housing (TH)	5,299	3,195	2,944	3,002	2,797	-205	-7%
Permanent Supportive Housing (PSH)	13,593	14,779	14,752	14,114	13,951	-163	-1%
Rapid Re-Housing (RRH)	1,902	2,159	2,486	2,565	3,955	1,390	54%
Other Permanent Housing (OPH)	570	481	519	1,005	1,121	116	12%

Award Summary

	2017	2018	2019	2020	2021	2020-21 Change	% Change
Continuum of Care (CoC)	\$109,111,520	\$116,091,026	\$120,932,696	\$125,935,531	\$139,767,224	\$13,831,693	11%
Emergency Solutions Grants (ESG)	\$14,972,890	\$13,465,394	\$13,932,691	\$14,347,726	\$14,260,165	(\$87,561)	-1%
Youth Homelessness Demonstration Program (YHDP)	--	\$6,078,027	--	--	--	--	--

*In 2021, HUD gave communities the option to cancel or modify the unsheltered survey portion of their counts based on the potential risk of COVID-19 transmission associated with conducting an in-person survey. As a result, HUD has excluded the unsheltered population sub-totals and all unsheltered sub-population data for this reporting period. The user is cautioned that the unsheltered and total homeless counts reported here may be missing data.