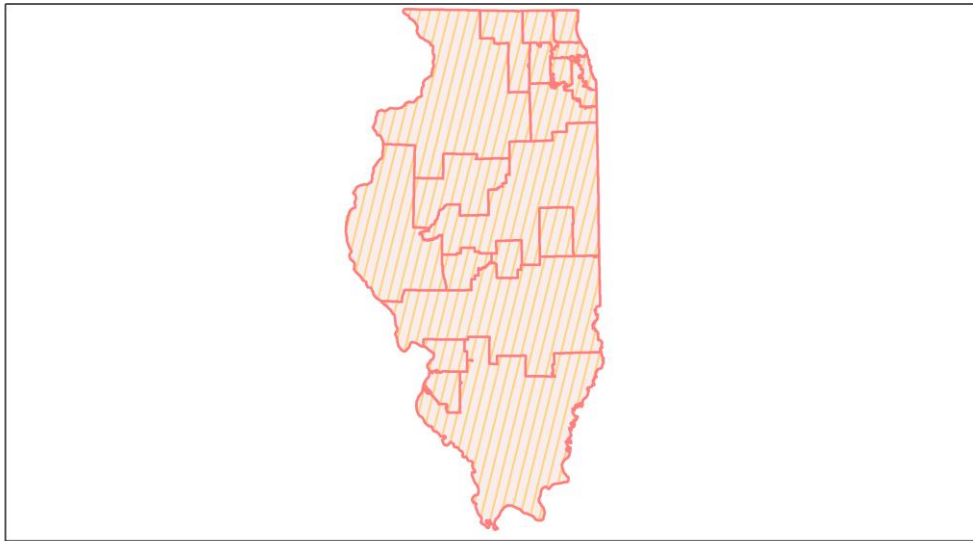
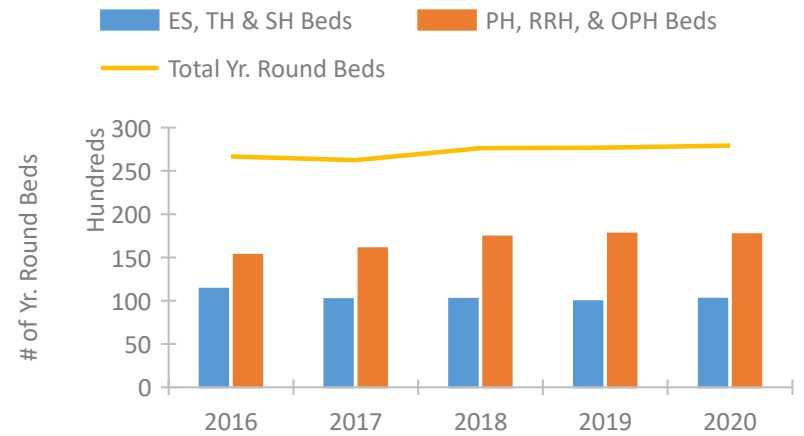


Illinois Continuum of Care Performance Profile

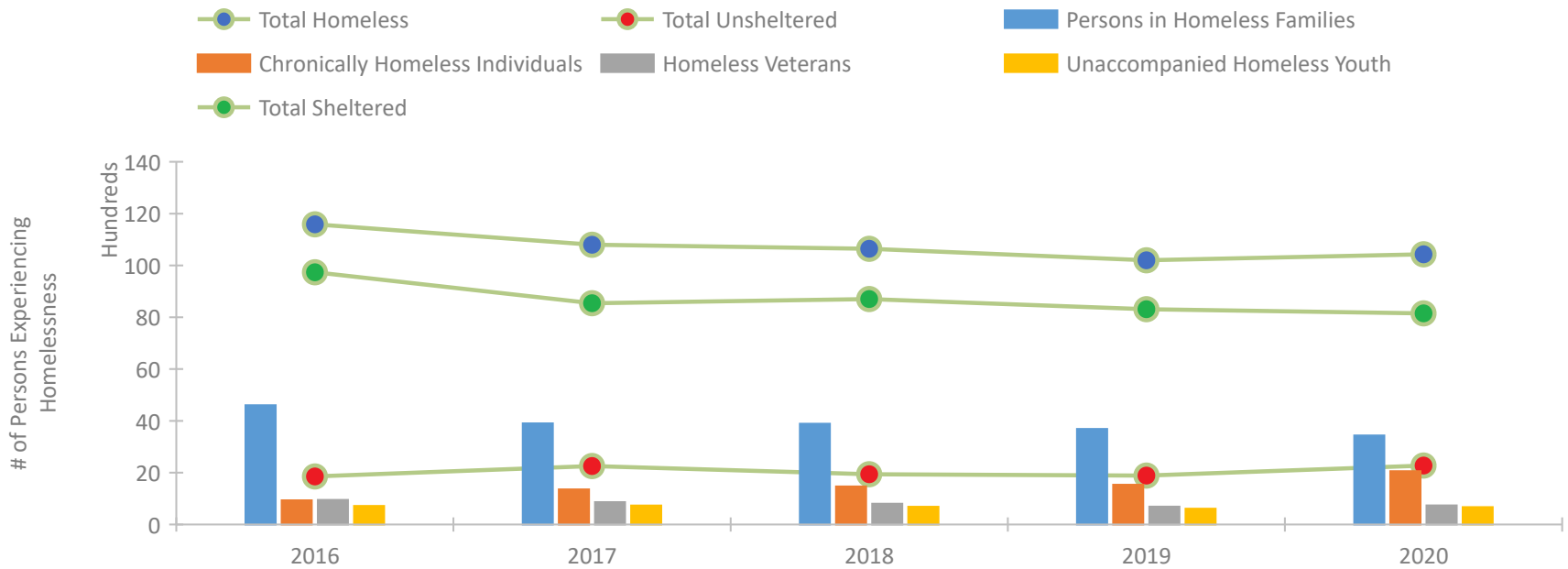


2020 CoC Boundaries 2019 CoC Boundaries

Housing Inventory Count by Program Type



Homeless Population – Point-in-Time (PIT) Count

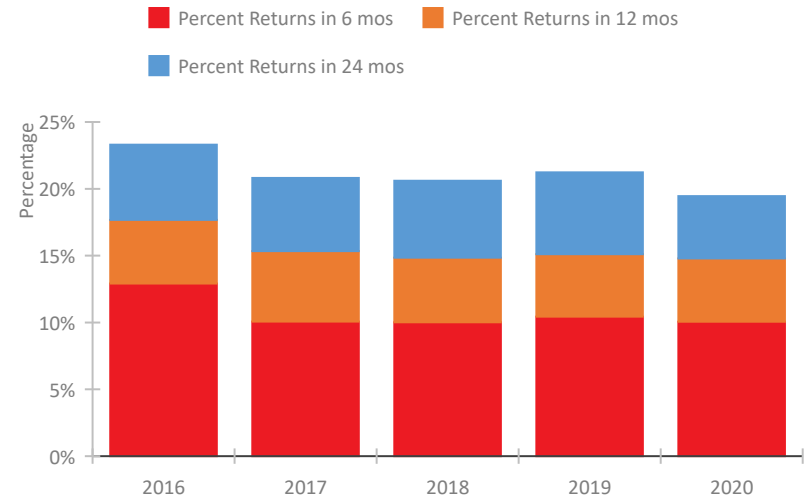


Illinois Continuum of Care Performance Profile

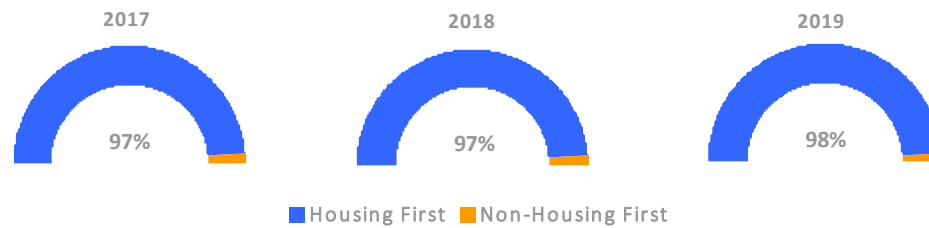
Exits to Permanent Housing by Program Type



Returns to Homelessness Over Time



Proportion of Housing First Projects by Year*



Number of Projects by Year			
	2017	2018	2019
Housing First Projects	386	422	373
Non-Housing First Projects	10	11	9

*In 2020 HUD awarded renewal projects noncompetitively, therefore no new data was collected and Housing First data remains the same from 2019 to 2020.

Data Summary: Illinois

Point-In-Time Count Summary

	2016	2017	2018	2019	2020	2019-20 Change	% Change
Number of Sheltered Persons in Families	4,510	3,782	3,825	3,591	3,331	-260	-7%
Number of Unsheltered Persons in Families	94	122	66	95	105	10	11%
Number of Sheltered Individuals	5,226	4,759	4,876	4,719	4,822	103	2%
Number of Unsheltered Individuals	1,760	2,135	1,876	1,794	2,173	379	21%
Total Homeless Persons	11,590	10,798	10,643	10,199	10,431	232	2%
Number of Sheltered Families	1,431	1,181	1,203	1,080	1,029	-51	-5%
Number of Unsheltered Families	30	47	20	25	34	9	36%
Number of Total Families	1,461	1,228	1,223	1,105	1,063	-42	-4%
Sheltered Chronically Homeless Individuals	562	644	778	1,072	1,032	-40	-4%
Unsheltered Chronically Homeless Individuals	375	711	692	461	1,026	565	123%
Total Chronically Homeless Individuals	937	1,355	1,470	1,533	2,058	525	34%
Sheltered Veterans	713	575	574	536	504	-32	-6%
Unsheltered Veterans	236	289	230	154	232	78	51%
Total Veterans	949	864	804	690	736	46	7%
Sheltered Unaccompanied Youth (up to 24)	648	592	609	540	527	-13	-2%
Unsheltered Unaccompanied Youth (up to 24)	71	138	75	69	144	75	109%
Total Unaccompanied Youth (up to 24)	719	730	684	609	671	62	10%

System Performance Measures Summary

	2016	2017	2018	2019	2020	2019-20 Change	% Change
Rate People Return to Homelessness in 6 Months	12.9%	10.1%	10.0%	10.4%	10.1%	-0.4%	N/A
Number of People who are Homeless for the First Time	26,733	26,538	24,957	25,149	17,102	-8,047	-32%
Rate People Exit from ES, SH, TH, and RRH to PH	31.5%	32.7%	33.3%	29.8%	35.3%	5.5%	N/A
Rate People in PSH and OPH Retain or Exit to PH	95.4%	96.4%	97.1%	96.8%	97.3%	0.6%	N/A

Housing Inventory Count Summary

	2016	2017	2018	2019	2020	2019-20 Change	% Change
Emergency Shelter (ES)	4,597	4,797	6,939	6,913	7,149	236	3%
Safe Haven (SH)	109	81	76	82	82	0	-0%
Transitional Housing (TH)	6,675	5,299	3,195	2,944	3,002	58	2%
Permanent Supportive Housing (PSH)	13,845	13,593	14,779	14,752	14,114	-638	-4%
Rapid Re-Housing (RRH)	1,188	1,902	2,159	2,486	2,565	79	3%
Other Permanent Housing (OPH)	260	570	481	519	1,005	486	94%

Award Summary

	2016	2017	2018	2019	2020	2019-20 Change	% Change
Continuum of Care (CoC)	\$104,862,190	\$109,111,520	\$116,091,026	\$120,932,696	\$125,935,531	\$5,002,835	4%
Emergency Solutions Grants (ESG)	\$13,440,676	\$14,972,890	\$13,465,394	\$13,932,691	\$14,347,726	\$415,035	3%
Youth Homelessness Demonstration Program (YHDP)	--	--	\$6,078,027	--	--	--	--