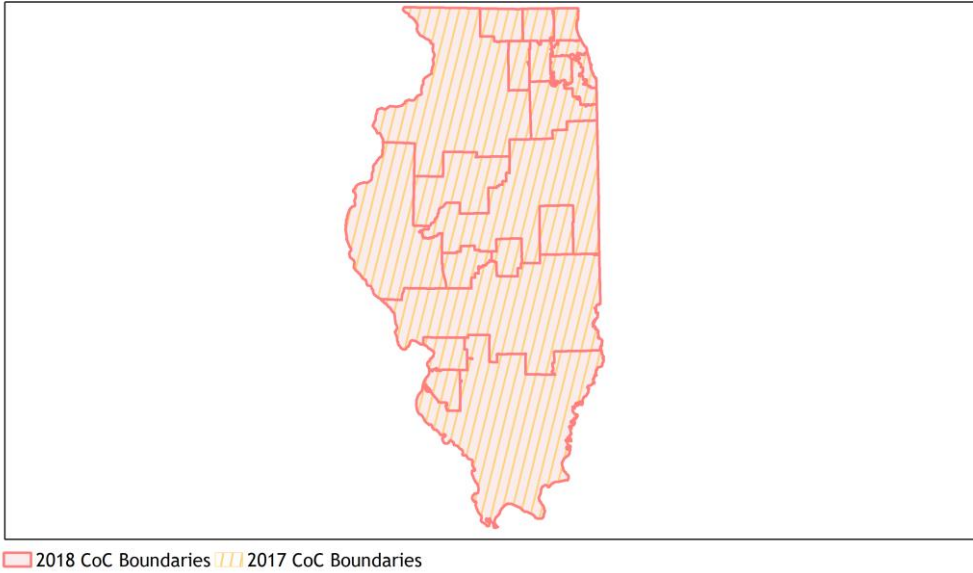
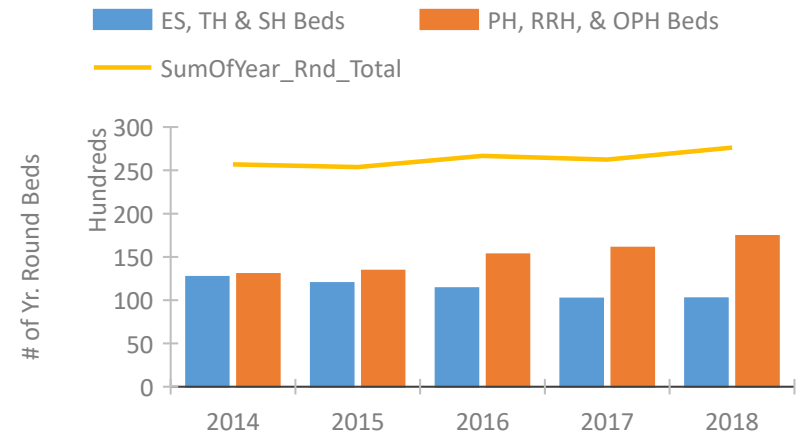


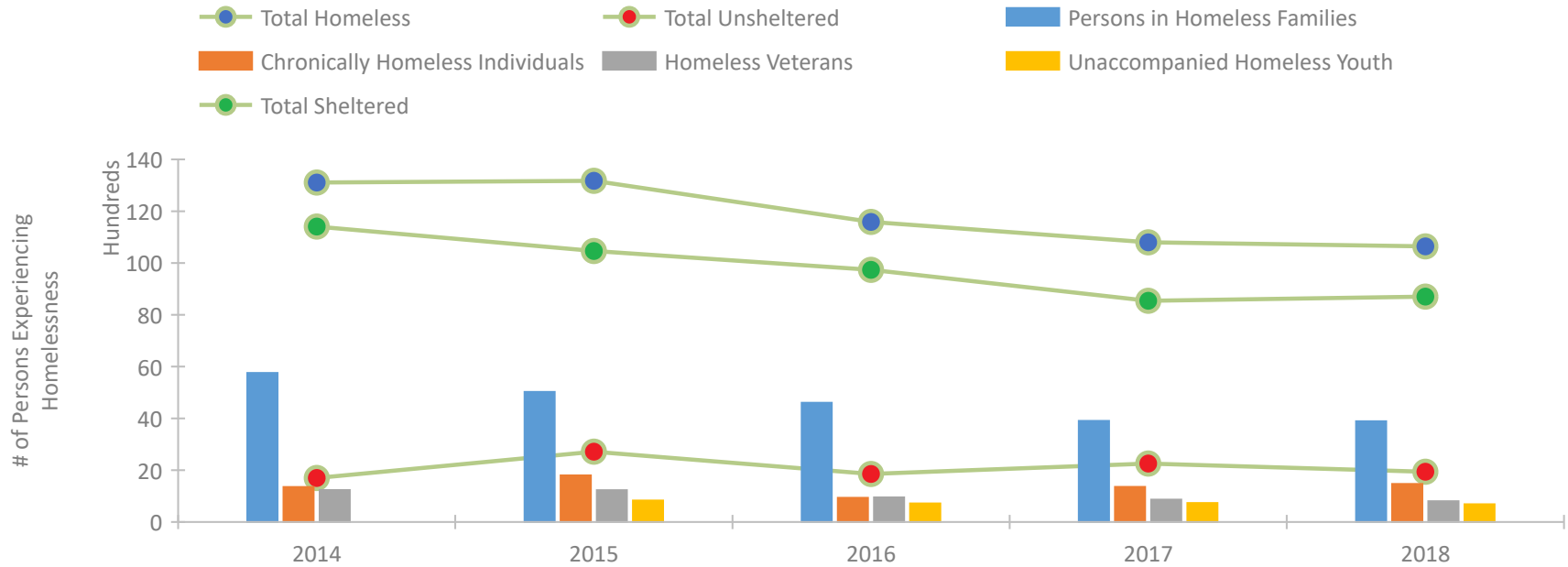
## Illinois Continuum of Care Performance Profile



### Housing Inventory Count by Program Type

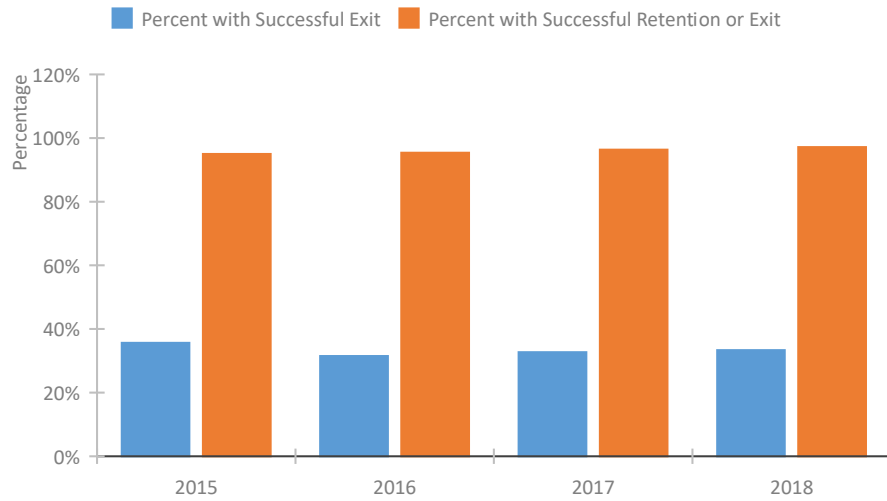


### Homeless Population – Point-in-Time (PIT) Count

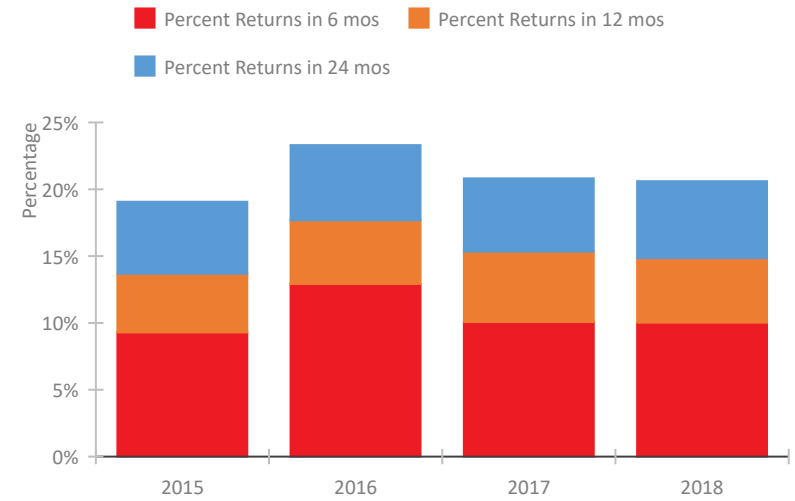


## Illinois Continuum of Care Performance Profile

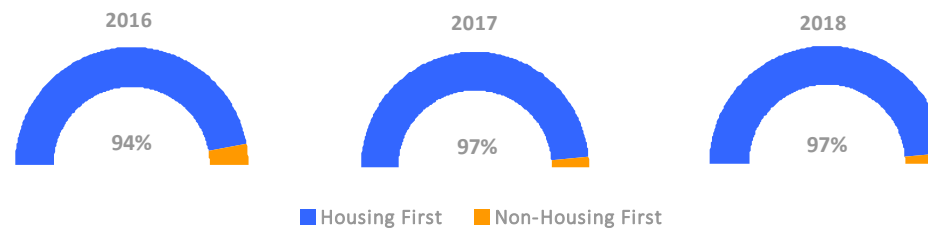
### Exits to Permanent Housing by Program Type



### Returns to Homelessness Over Time



### Proportion of Housing First Projects by Year



### Number of Projects by Year

	2016	2017	2018
Housing First Projects	373	386	422
Non-Housing First Projects	23	10	11

## Data Summary: Illinois

### Point-In-Time Count Summary

	2014	2015	2016	2017	2018	2017-18 Change	% Change
Number of Sheltered Persons in Families	5,616	4,864	4,510	3,782	3,825	43	1%
Number of Unsheltered Persons in Families	141	161	94	122	66	-56	-46%
Number of Sheltered Individuals	5,737	5,565	5,199	4,712	4,822	110	2%
Number of Unsheltered Individuals	1,550	2,548	1,757	2,132	1,876	-256	-12%
<b>Total Homeless Persons</b>	<b>13,044</b>	<b>13,138</b>	<b>11,560</b>	<b>10,748</b>	<b>10,589</b>	<b>-159</b>	<b>-1%</b>
Number of Sheltered Families	1,824	1,597	1,431	1,181	1,203	22	2%
Number of Unsheltered Families	56	51	30	47	20	-27	-57%
<b>Number of Total Families</b>	<b>1,880</b>	<b>1,648</b>	<b>1,461</b>	<b>1,228</b>	<b>1,223</b>	<b>-5</b>	<b>0%</b>
Sheltered Chronically Homeless Individuals	891	892	562	644	778	134	21%
Unsheltered Chronically Homeless Individuals	458	907	375	711	692	-19	-3%
<b>Total Chronically Homeless Individuals</b>	<b>1,349</b>	<b>1,799</b>	<b>937</b>	<b>1,355</b>	<b>1,470</b>	<b>115</b>	<b>8%</b>
Sheltered Veterans	913	769	713	575	574	-1	0%
Unsheltered Veterans	321	457	236	289	230	-59	-20%
<b>Total Veterans</b>	<b>1,234</b>	<b>1,226</b>	<b>949</b>	<b>864</b>	<b>804</b>	<b>-60</b>	<b>-7%</b>
Sheltered Unaccompanied Youth (up to 24)	--	680	648	592	609	17	3%
Unsheltered Unaccompanied Youth (up to 24)	--	152	71	138	75	-63	-46%
<b>Total Unaccompanied Youth (up to 24)</b>	<b>--</b>	<b>832</b>	<b>719</b>	<b>730</b>	<b>684</b>	<b>-46</b>	<b>-6%</b>

### System Performance Measures Summary

	2014	2015	2016	2017	2018	2017-18 Change	% Change
Rate People Return to Homelessness in 6 Months	N/A	9.3%	12.9%	10.1%	10.0%	0%	N/A
Number of People who are Homeless for the First Time	N/A	24,450	26,733	26,538	24,957	-1,581	-6%
Rate People Exit from ES, SH, TH, and RRH to PH	N/A	35.6%	31.5%	32.7%	33.3%	0.7%	N/A
Rate People in PSH and OPH Retain or Exit to PH	N/A	95.0%	95.4%	96.4%	97.1%	0.8%	N/A

### Housing Inventory Count Summary

	2014	2015	2016	2017	2018	2017-18 Change	% Change
Emergency Shelter (ES)	5,174	4,918	4,597	4,797	6,939	2,142	45%
Safe Haven (SH)	95	80	109	81	76	-5	-6%
Transitional Housing (TH)	7,407	6,977	6,675	5,299	3,195	-2,104	-40%
Permanent Supportive Housing (PSH)	12,317	12,162	13,845	13,593	14,779	1,186	9%
Rapid Re-Housing (RRH)	625	976	1,188	1,902	2,159	257	14%
Other Permanent Housing (OPH)	72	272	260	570	481	-89	-16%

### Award Summary

	2014	2015	2016	2017	2018	2017-18 Change	% Change
<b>Continuum of Care (CoC)</b>	\$100,101,004	\$102,736,816	\$104,862,190	\$109,111,520	\$116,091,026	\$6,979,506	6%
<b>Emergency Solutions Grants (ESG)</b>	\$12,343,042	\$13,404,654	\$13,440,676	\$14,972,890	\$13,465,394	(\$1,507,496)	-10%
<b>Youth Homelessness Demonstration Program (YHDP)</b>	N/A	N/A	--	--	\$6,078,027	--	--