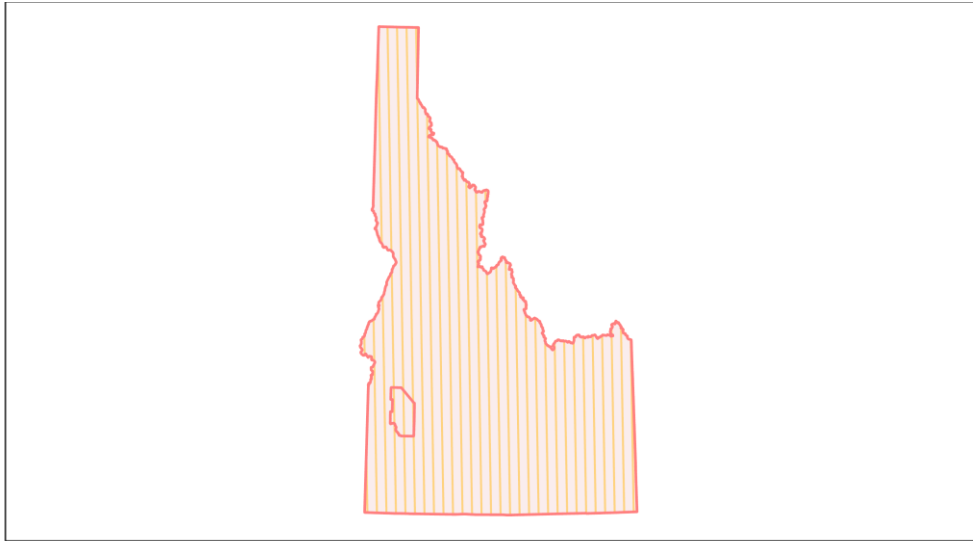
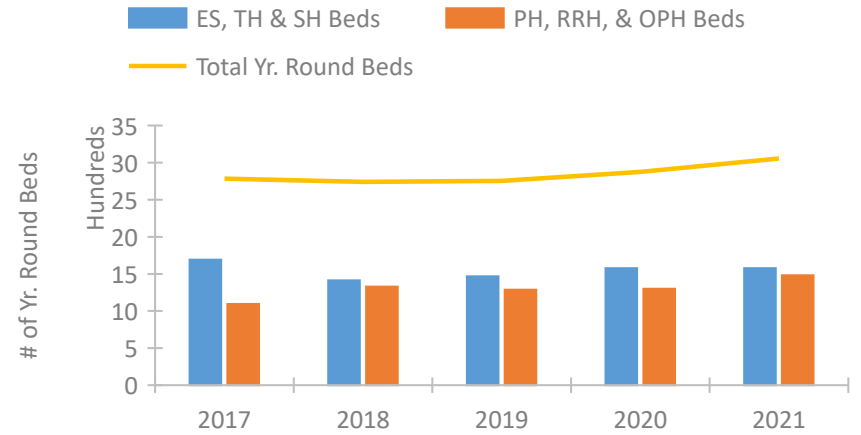


Idaho Continuum of Care Performance Profile

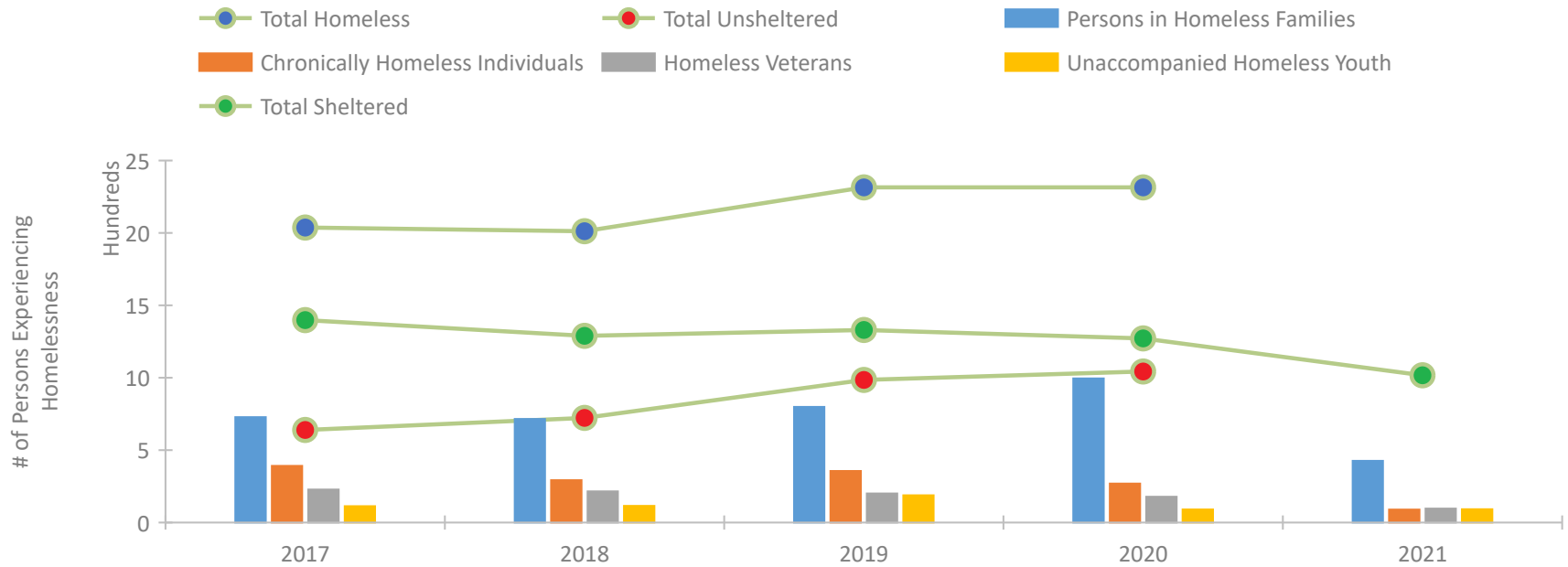


2021 CoC Boundaries 2020 CoC Boundaries

Housing Inventory Count by Program Type



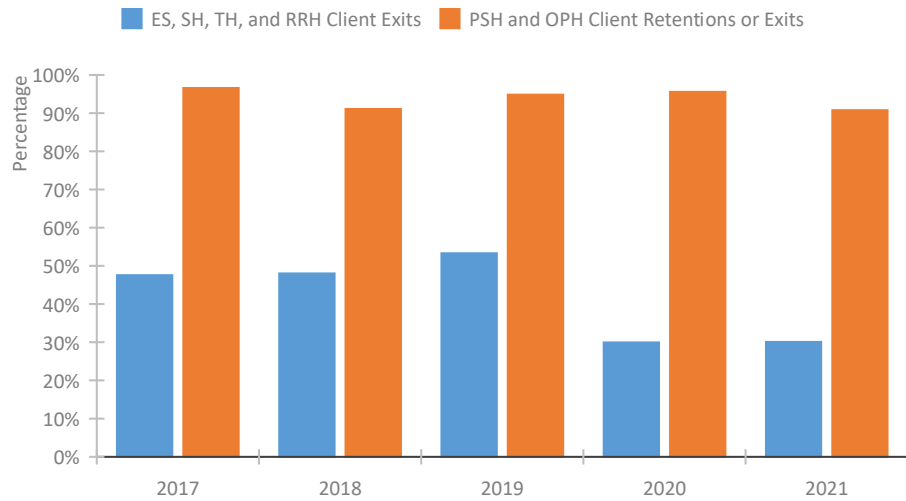
Homeless Population – Point-in-Time (PIT) Count*



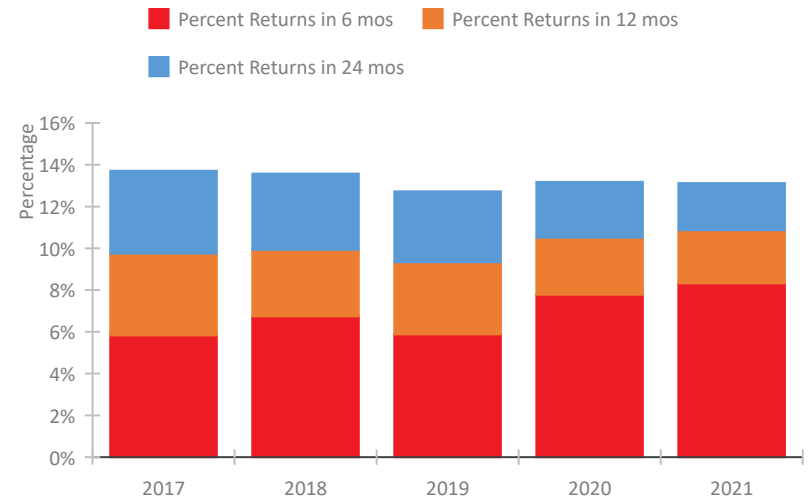
*In 2021, HUD gave communities the option to cancel or modify the unsheltered survey portion of their counts based on the potential risk of COVID-19 transmission associated with conducting an in-person survey. As a result, HUD has excluded the unsheltered population sub-totals and all unsheltered sub-population data for this reporting period. The user is cautioned that the unsheltered and total homeless counts reported here may be missing data.

Idaho Continuum of Care Performance Profile

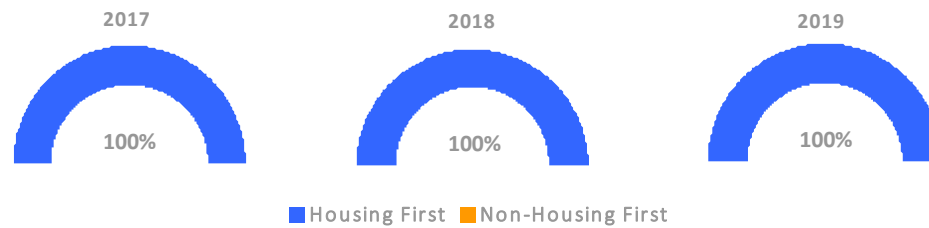
Exits to Permanent Housing by Program Type



Returns to Homelessness Over Time



Proportion of Housing First Projects by Year†



Number of Projects by Year			
	2017	2018	2019
Housing First Projects	28	25	24
Non-Housing First Projects	0	0	0

†2021 Data unavailable at the time of report publication. In 2020 HUD awarded renewal projects noncompetitively, therefore no new data was collected and Housing First data remains the same from 2019 to 2020.

Data Summary: Idaho

Point-In-Time Count Summary*

	2017	2018	2019	2020	2021	2020-21 Change	% Change
Number of Sheltered Persons in Families	541	517	499	513	426	-87	-17%
Number of Unsheltered Persons in Families	187	198	300	482	0	-482	-100%
Number of Sheltered Individuals	857	772	831	759	591	-168	-22%
Number of Unsheltered Individuals	452	525	685	561	--	--	--
Total Homeless Persons	2,037	2,012	2,315	2,315	1,017	-1,298	-56%
Number of Sheltered Families	167	158	161	160	125	-35	-22%
Number of Unsheltered Families	44	51	82	116	--	--	--
Number of Total Families	211	209	243	276	125	-151	-55%
Sheltered Chronically Homeless Individuals	257	138	186	102	89	-13	-13%
Unsheltered Chronically Homeless Individuals	134	155	170	167	--	--	--
Total Chronically Homeless Individuals	391	293	356	269	89	-180	-67%
Sheltered Veterans	159	146	129	112	96	-16	-14%
Unsheltered Veterans	69	69	72	66	--	--	--
Total Veterans	228	215	201	178	96	-82	-46%
Sheltered Unaccompanied Youth (up to 24)	89	55	129	51	92	41	80%
Unsheltered Unaccompanied Youth (up to 24)	24	60	59	39	--	--	--
Total Unaccompanied Youth (up to 24)	113	115	188	90	92	2	2%

System Performance Measures Summary

	2017	2018	2019	2020	2021	2020-21 Change	% Change
Rate People Return to Homelessness in 6 Months	5.8%	6.7%	5.9%	7.8%	8.3%	0.5%	N/A
Number of People who are Homeless for the First Time	2,884	2,787	2,557	3,209	3,004	-205	-6.4%
Rate People Exit from ES, SH, TH, and RRH to PH	47.6%	48.0%	53.3%	29.9%	30.1%	0.2%	N/A
Rate People in PSH and OPH Retain or Exit to PH	96.6%	91.1%	94.8%	95.6%	90.8%	-4.8%	N/A

Housing Inventory Count Summary

	2017	2018	2019	2020	2021	2020-21 Change	% Change
Emergency Shelter (ES)	1,125	1,033	1,076	1,194	1,154	-40	-3%
Transitional Housing (TH)	566	380	390	383	422	39	10%
Permanent Supportive Housing (PSH)	831	905	909	907	1,021	114	13%
Rapid Re-Housing (RRH)	263	423	378	393	460	67	17%

Award Summary

	2017	2018	2019	2020	2021	2020-21 Change	% Change
Continuum of Care (CoC)	\$3,717,376	\$4,326,670	\$4,456,312	\$4,846,823	\$5,293,034	\$446,211	9%
Emergency Solutions Grants (ESG)	\$1,555,887	\$1,031,627	\$1,074,750	\$1,110,270	\$1,099,467	(\$10,803)	-1%

*In 2021, HUD gave communities the option to cancel or modify the unsheltered survey portion of their counts based on the potential risk of COVID-19 transmission associated with conducting an in-person survey. As a result, HUD has excluded the unsheltered population sub-totals and all unsheltered sub-population data for this reporting period. The user is cautioned that the unsheltered and total homeless counts reported here may be missing data.