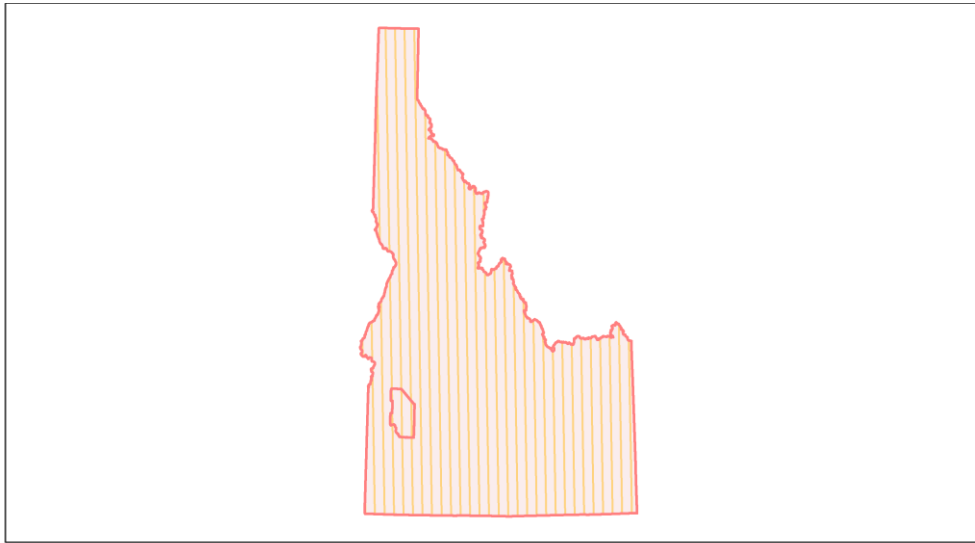
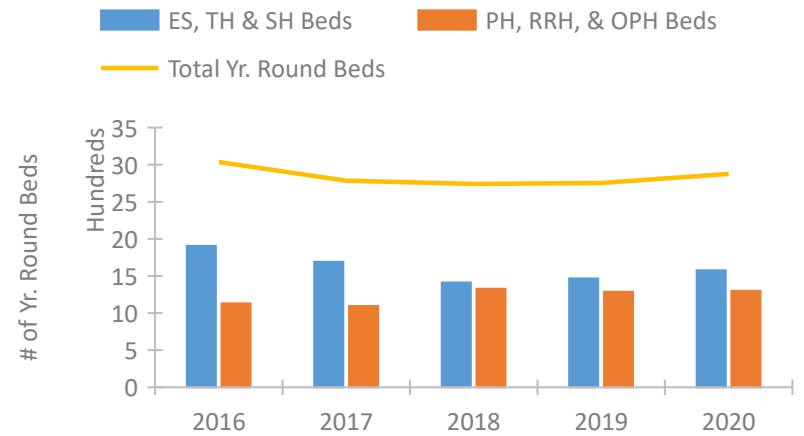


## Idaho Continuum of Care Performance Profile

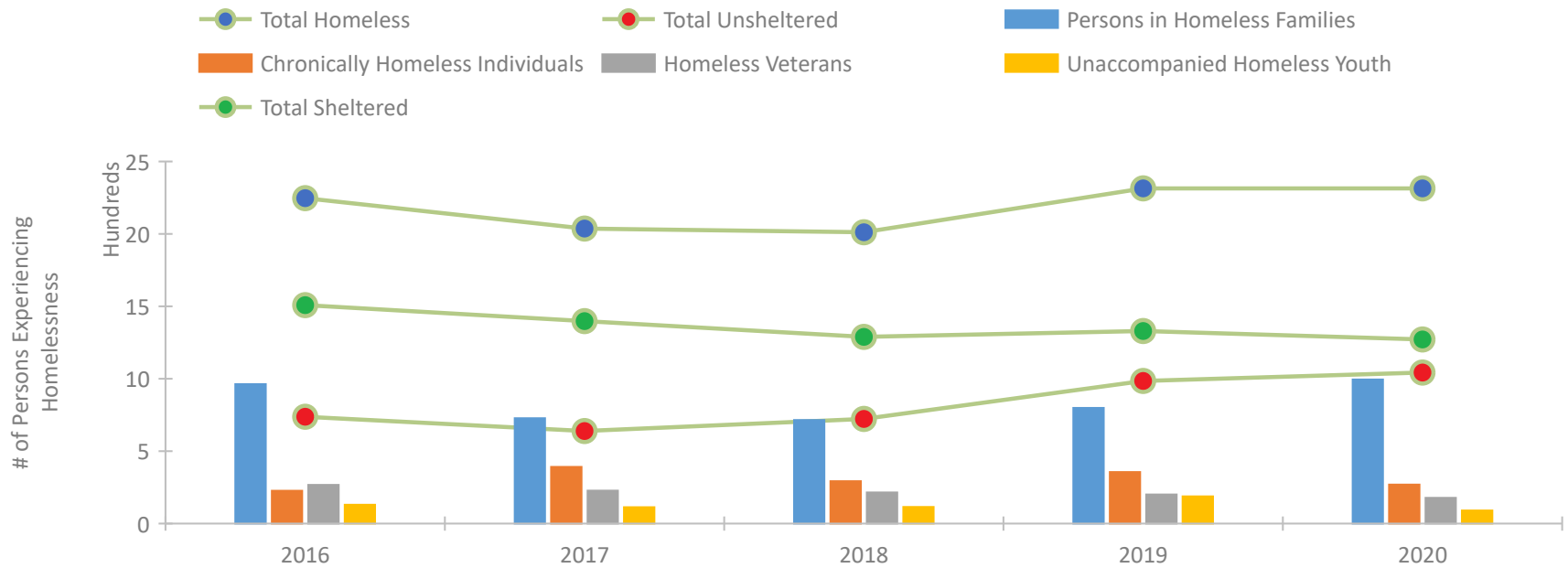


2020 CoC Boundaries 2019 CoC Boundaries

### Housing Inventory Count by Program Type



### Homeless Population – Point-in-Time (PIT) Count

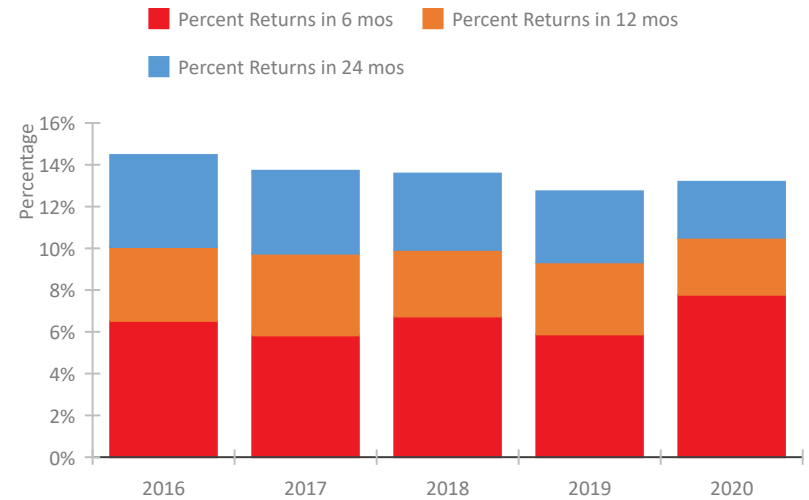


## Idaho Continuum of Care Performance Profile

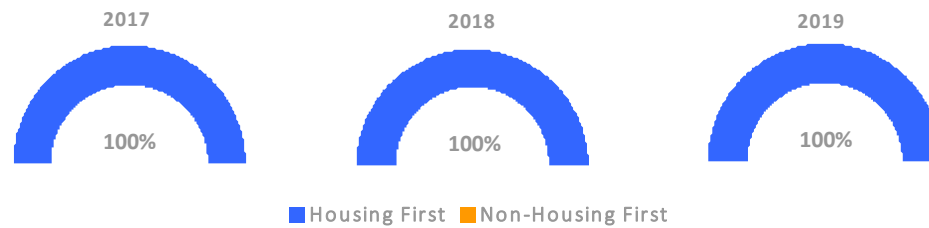
### Exits to Permanent Housing by Program Type



### Returns to Homelessness Over Time



### Proportion of Housing First Projects by Year\*



Number of Projects by Year			
	2017	2018	2019
Housing First Projects	28	25	24
Non-Housing First Projects	0	0	0

\*In 2020 HUD awarded renewal projects noncompetitively, therefore no new data was collected and Housing First data remains the same from 2019 to 2020.

## Data Summary: Idaho

### Point-In-Time Count Summary

	2016	2017	2018	2019	2020	2019-20 Change	% Change
Number of Sheltered Persons in Families	623	541	517	499	513	14	3%
Number of Unsheltered Persons in Families	340	187	198	300	482	182	61%
Number of Sheltered Individuals	886	857	772	831	759	-72	-9%
Number of Unsheltered Individuals	398	452	525	685	561	-124	-18%
<b>Total Homeless Persons</b>	<b>2,247</b>	<b>2,037</b>	<b>2,012</b>	<b>2,315</b>	<b>2,315</b>	<b>0</b>	<b>-0%</b>
Number of Sheltered Families	197	167	158	161	160	-1	-1%
Number of Unsheltered Families	94	44	51	82	116	34	41%
<b>Number of Total Families</b>	<b>291</b>	<b>211</b>	<b>209</b>	<b>243</b>	<b>276</b>	<b>33</b>	<b>14%</b>
Sheltered Chronically Homeless Individuals	99	257	138	186	102	-84	-45%
Unsheltered Chronically Homeless Individuals	128	134	155	170	167	-3	-2%
<b>Total Chronically Homeless Individuals</b>	<b>227</b>	<b>391</b>	<b>293</b>	<b>356</b>	<b>269</b>	<b>-87</b>	<b>-24%</b>
Sheltered Veterans	202	159	146	129	112	-17	-13%
Unsheltered Veterans	65	69	69	72	66	-6	-8%
<b>Total Veterans</b>	<b>267</b>	<b>228</b>	<b>215</b>	<b>201</b>	<b>178</b>	<b>-23</b>	<b>-11%</b>
Sheltered Unaccompanied Youth (up to 24)	89	89	55	129	51	-78	-60%
Unsheltered Unaccompanied Youth (up to 24)	41	24	60	59	39	-20	-34%
<b>Total Unaccompanied Youth (up to 24)</b>	<b>130</b>	<b>113</b>	<b>115</b>	<b>188</b>	<b>90</b>	<b>-98</b>	<b>-52%</b>

### System Performance Measures Summary

	2016	2017	2018	2019	2020	2019-20 Change	% Change
Rate People Return to Homelessness in 6 Months	6.5%	5.8%	6.7%	5.9%	7.8%	1.9%	N/A
Number of People who are Homeless for the First Time	2,937	2,884	2,787	2,557	3,209	652	25.5%
Rate People Exit from ES, SH, TH, and RRH to PH	51.7%	47.6%	48.0%	53.3%	29.9%	-23.4%	N/A
Rate People in PSH and OPH Retain or Exit to PH	85.6%	96.6%	91.1%	94.8%	95.6%	0.8%	N/A

### Housing Inventory Count Summary

	2016	2017	2018	2019	2020	2019-20 Change	% Change
Emergency Shelter (ES)	1,075	1,125	1,033	1,076	1,194	118	11%
Transitional Housing (TH)	831	566	380	390	383	-7	-2%
Permanent Supportive Housing (PSH)	839	831	905	909	907	-2	-0%
Rapid Re-Housing (RRH)	291	263	423	378	393	15	4%

### Award Summary

	2016	2017	2018	2019	2020	2019-20 Change	% Change
<b>Continuum of Care (CoC)</b>	\$3,669,450	\$3,717,376	\$4,326,670	\$4,456,312	\$4,846,823	\$390,511	9%
<b>Emergency Solutions Grants (ESG)</b>	\$1,021,185	\$1,555,887	\$1,031,627	\$1,074,750	\$1,110,270	\$35,520	3%