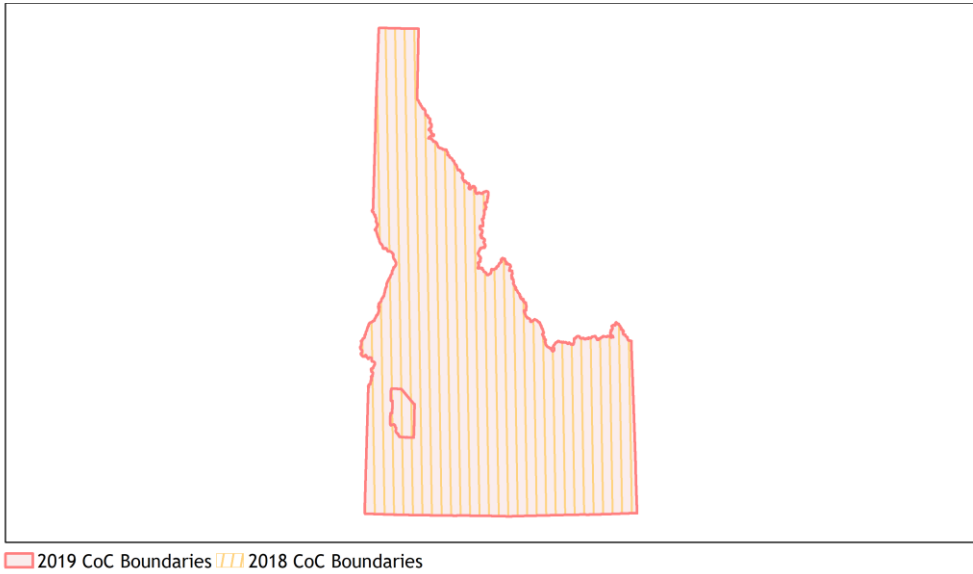
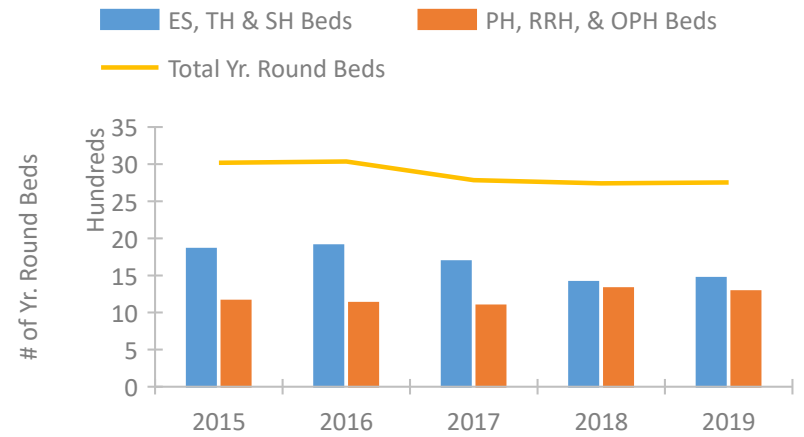


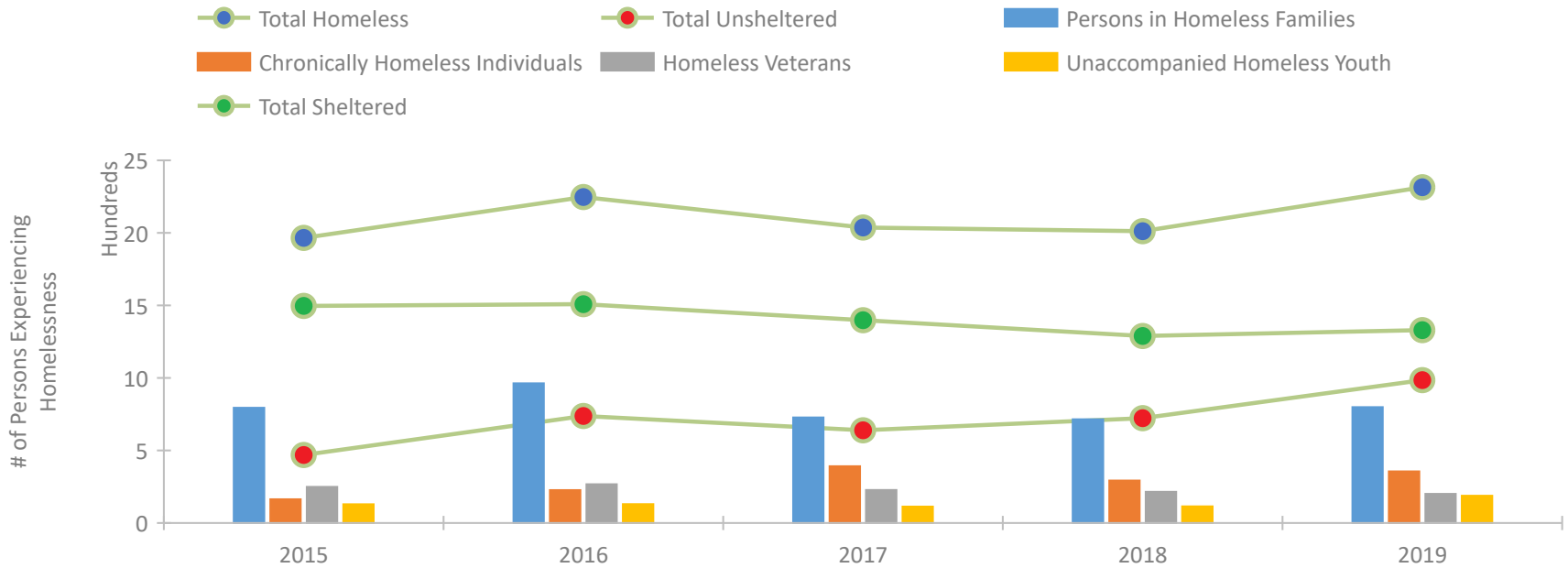
Idaho Continuum of Care Performance Profile



Housing Inventory Count by Program Type



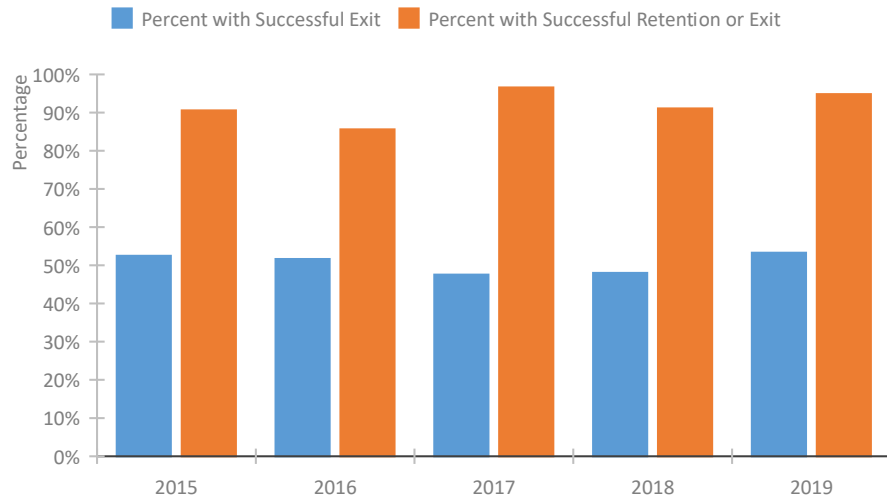
Homeless Population – Point-in-Time (PIT) Count



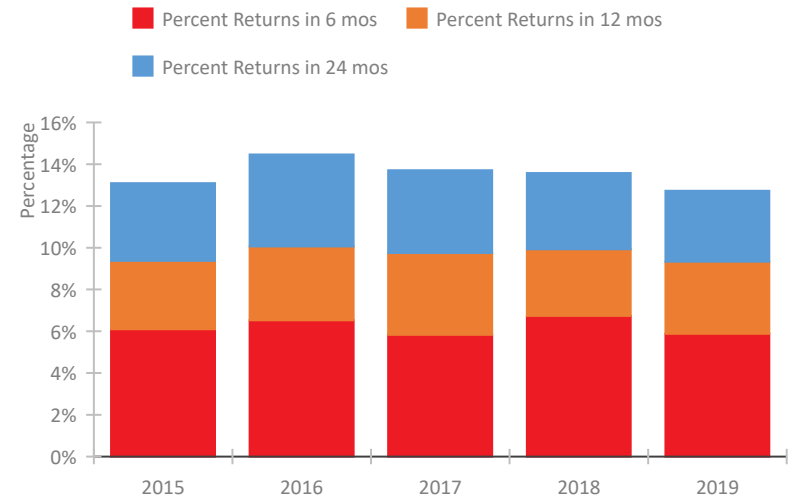
Idaho

Continuum of Care Performance Profile

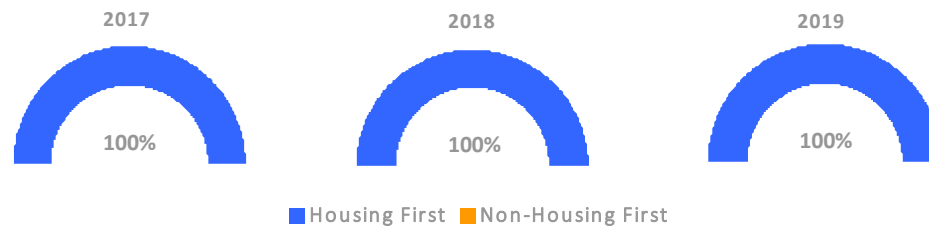
Exits to Permanent Housing by Program Type



Returns to Homelessness Over Time



Proportion of Housing First Projects by Year



Number of Projects by Year

	2017	2018	2019
Housing First Projects	28	25	24
Non-Housing First Projects	0	0	0

Data Summary: Idaho

Point-In-Time Count Summary

	2015	2016	2017	2018	2019	2018-19 Change	% Change
Number of Sheltered Persons in Families	665	623	541	517	499	-18	-3%
Number of Unsheltered Persons in Families	129	340	187	198	300	102	52%
Number of Sheltered Individuals	832	886	857	772	831	59	8%
Number of Unsheltered Individuals	340	398	452	525	685	160	30%
Total Homeless Persons	1,966	2,247	2,037	2,012	2,315	303	15%
Number of Sheltered Families	213	197	167	158	161	3	2%
Number of Unsheltered Families	38	94	44	51	82	31	61%
Number of Total Families	251	291	211	209	243	34	16%
Sheltered Chronically Homeless Individuals	84	99	257	138	186	48	35%
Unsheltered Chronically Homeless Individuals	80	128	134	155	170	15	10%
Total Chronically Homeless Individuals	164	227	391	293	356	63	22%
Sheltered Veterans	174	202	159	146	129	-17	-12%
Unsheltered Veterans	75	65	69	69	72	3	4%
Total Veterans	249	267	228	215	201	-14	-7%
Sheltered Unaccompanied Youth (up to 24)	91	89	89	55	129	74	135%
Unsheltered Unaccompanied Youth (up to 24)	38	41	24	60	59	-1	-2%
Total Unaccompanied Youth (up to 24)	129	130	113	115	188	73	63%

System Performance Measures Summary

	2015	2016	2017	2018	2019	2018-19 Change	% Change
Rate People Return to Homelessness in 6 Months	6.1%	6.5%	5.8%	6.7%	5.9%	-0.9%	N/A
Number of People who are Homeless for the First Time	3,035	2,937	2,884	2,787	2,557	-230	-8.3%
Rate People Exit from ES, SH, TH, and RRH to PH	52.5%	51.7%	47.6%	48.0%	53.3%	5.3%	N/A
Rate People in PSH and OPH Retain or Exit to PH	90.6%	85.6%	96.6%	91.1%	94.8%	3.7%	N/A

Housing Inventory Count Summary

	2015	2016	2017	2018	2019	2018-19 Change	% Change
Emergency Shelter (ES)	939	1,075	1,125	1,033	1,076	43	4%
Transitional Housing (TH)	920	831	566	380	390	10	3%
Permanent Supportive Housing (PSH)	854	839	831	905	909	4	0%
Rapid Re-Housing (RRH)	306	291	263	423	378	-45	-11%

Award Summary

	2015	2016	2017	2018	2019	2018-19 Change	% Change
Continuum of Care (CoC)	\$3,713,768	\$3,669,450	\$3,717,376	\$4,326,670	\$4,456,312	\$129,642	3%
Emergency Solutions Grants (ESG)	\$1,013,565	\$1,021,185	\$1,555,887	\$1,031,627	\$1,074,750	\$43,123	4%