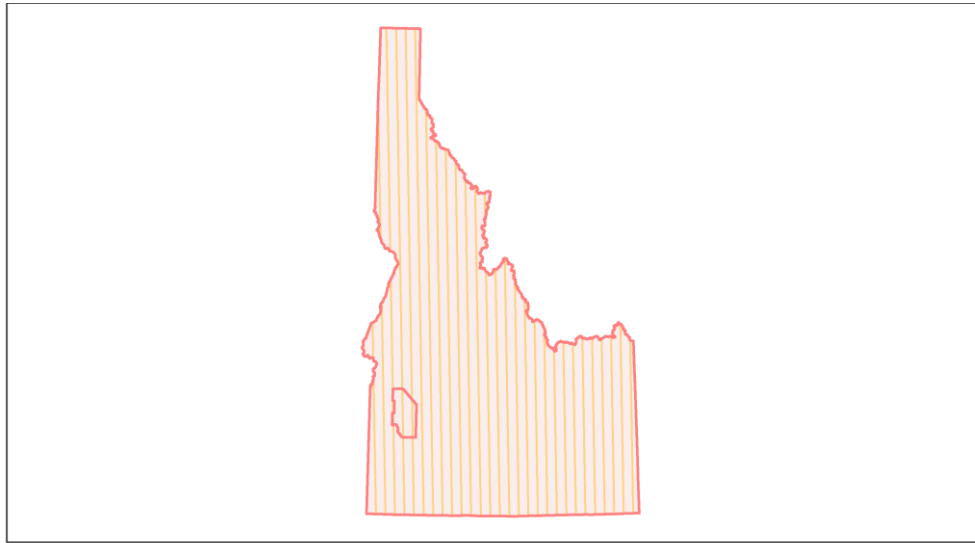
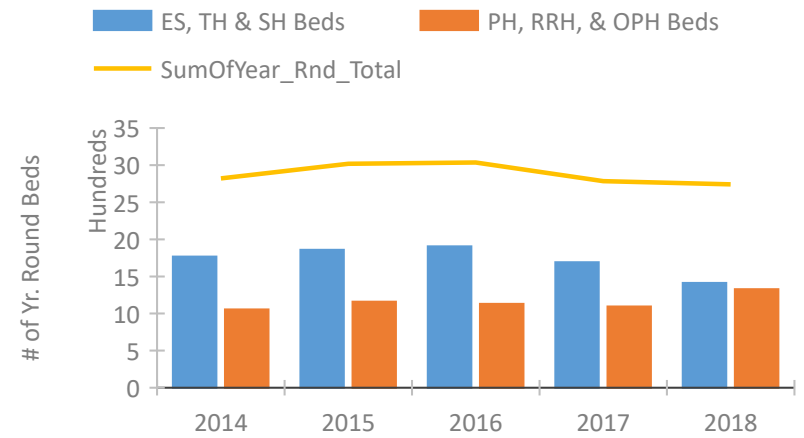


Idaho Continuum of Care Performance Profile

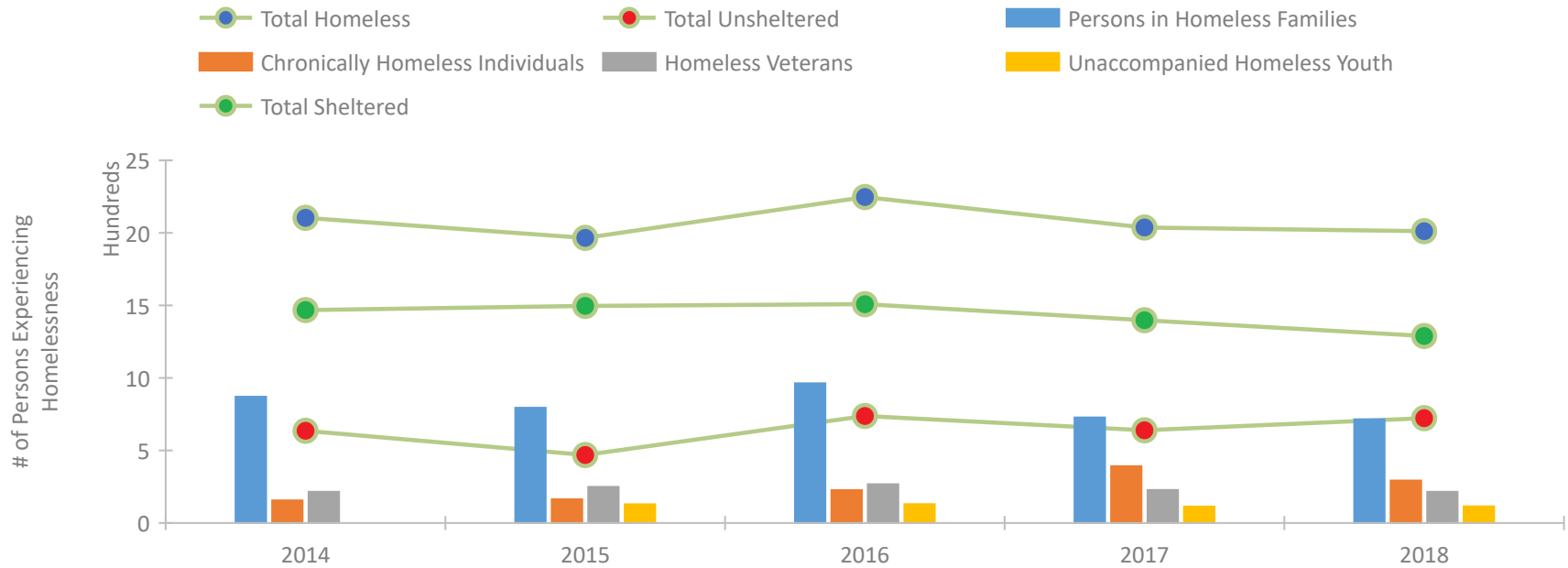


2018 CoC Boundaries 2017 CoC Boundaries

Housing Inventory Count by Program Type



Homeless Population – Point-in-Time (PIT) Count

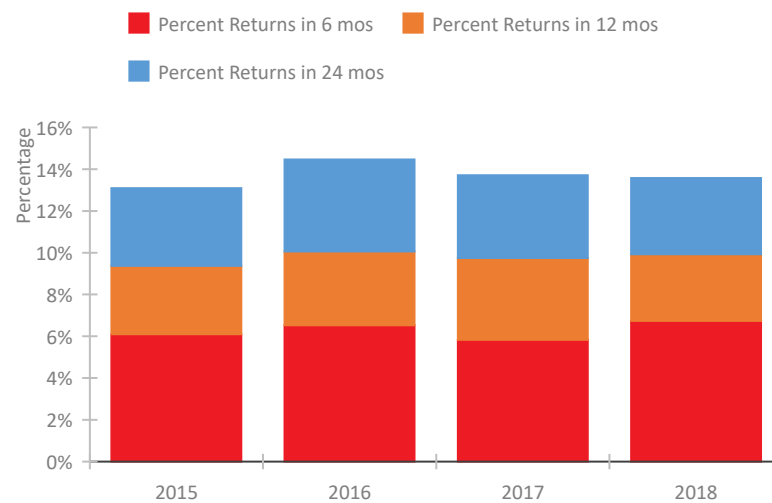


Idaho Continuum of Care Performance Profile

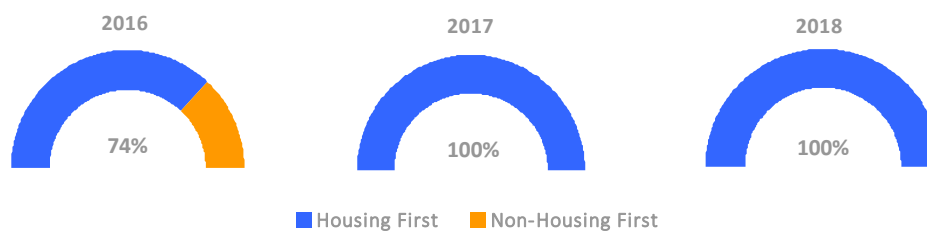
Exits to Permanent Housing by Program Type



Returns to Homelessness Over Time



Proportion of Housing First Projects by Year



Number of Projects by Year

	2016	2017	2018
Housing First Projects	20	28	25
Non-Housing First Projects	7	0	0

Data Summary: Idaho

Point-In-Time Count Summary

	2014	2015	2016	2017	2018	2017-18 Change	% Change
Number of Sheltered Persons in Families	620	665	623	541	517	-24	-4%
Number of Unsheltered Persons in Families	250	129	340	187	198	11	6%
Number of Sheltered Individuals	842	829	872	850	766	-84	-10%
Number of Unsheltered Individuals	386	339	396	452	518	66	15%
Total Homeless Persons	2,098	1,962	2,231	2,030	1,999	-31	-2%
Number of Sheltered Families	197	213	197	167	158	-9	-5%
Number of Unsheltered Families	67	38	94	44	51	7	16%
Number of Total Families	264	251	291	211	209	-2	-1%
Sheltered Chronically Homeless Individuals	69	84	99	257	138	-119	-46%
Unsheltered Chronically Homeless Individuals	87	80	128	134	155	21	16%
Total Chronically Homeless Individuals	156	164	227	391	293	-98	-25%
Sheltered Veterans	135	174	202	159	146	-13	-8%
Unsheltered Veterans	80	75	65	69	69	0	0%
Total Veterans	215	249	267	228	215	-13	-6%
Sheltered Unaccompanied Youth (up to 24)	--	91	89	89	55	-34	-38%
Unsheltered Unaccompanied Youth (up to 24)	--	38	41	24	60	36	150%
Total Unaccompanied Youth (up to 24)	--	129	130	113	115	2	2%

System Performance Measures Summary

	2014	2015	2016	2017	2018	2017-18 Change	% Change
Rate People Return to Homelessness in 6 Months	N/A	6.1%	6.5%	5.8%	6.7%	0.9%	N/A
Number of People who are Homeless for the First Time	N/A	3,035	2,937	2,884	2,787	-97	-3.4%
Rate People Exit from ES, SH, TH, and RRH to PH	N/A	52.5%	51.7%	47.6%	48.0%	0.5%	N/A
Rate People in PSH and OPH Retain or Exit to PH	N/A	90.6%	85.6%	96.6%	91.1%	-5.5%	N/A

Housing Inventory Count Summary

	2014	2015	2016	2017	2018	2017-18 Change	% Change
Emergency Shelter (ES)	859	939	1,075	1,125	1,033	-92	-8%
Transitional Housing (TH)	909	920	831	566	380	-186	-33%
Permanent Supportive Housing (PSH)	835	854	839	831	905	74	9%
Rapid Re-Housing (RRH)	219	306	291	263	423	160	61%

Award Summary

	2014	2015	2016	2017	2018	2017-18 Change	% Change
Continuum of Care (CoC)	\$4,076,606	\$3,713,768	\$3,669,450	\$3,717,376	\$4,326,670	\$609,294	16%
Emergency Solutions Grants (ESG)	\$913,026	\$1,013,565	\$1,021,185	\$1,555,887	\$1,031,627	(\$524,260)	-34%