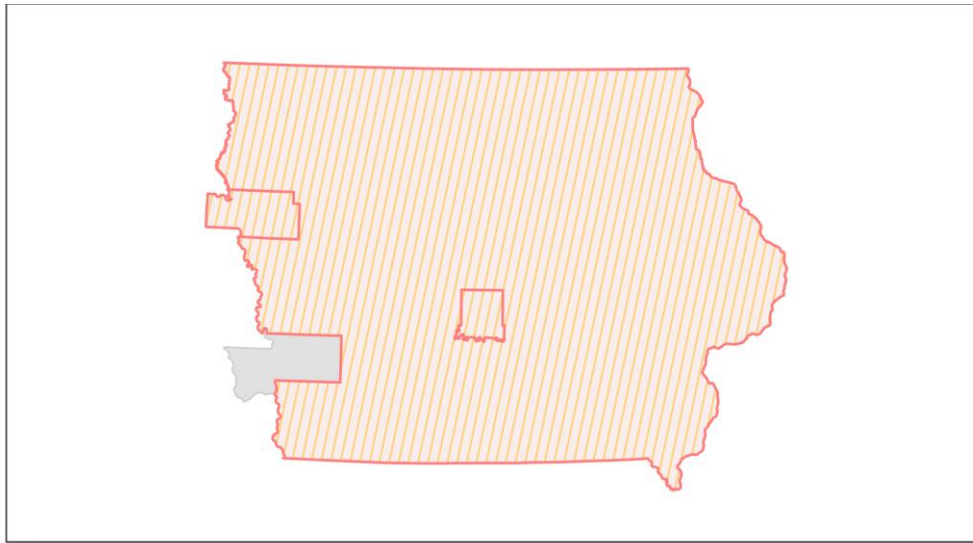
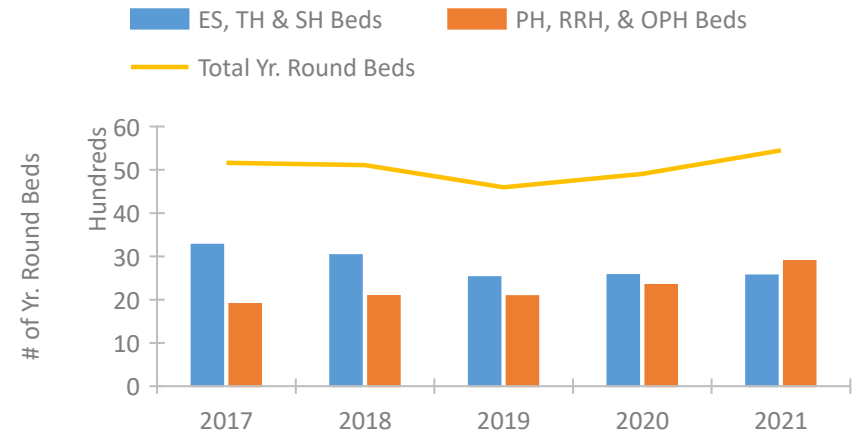


## Iowa Continuum of Care Performance Profile

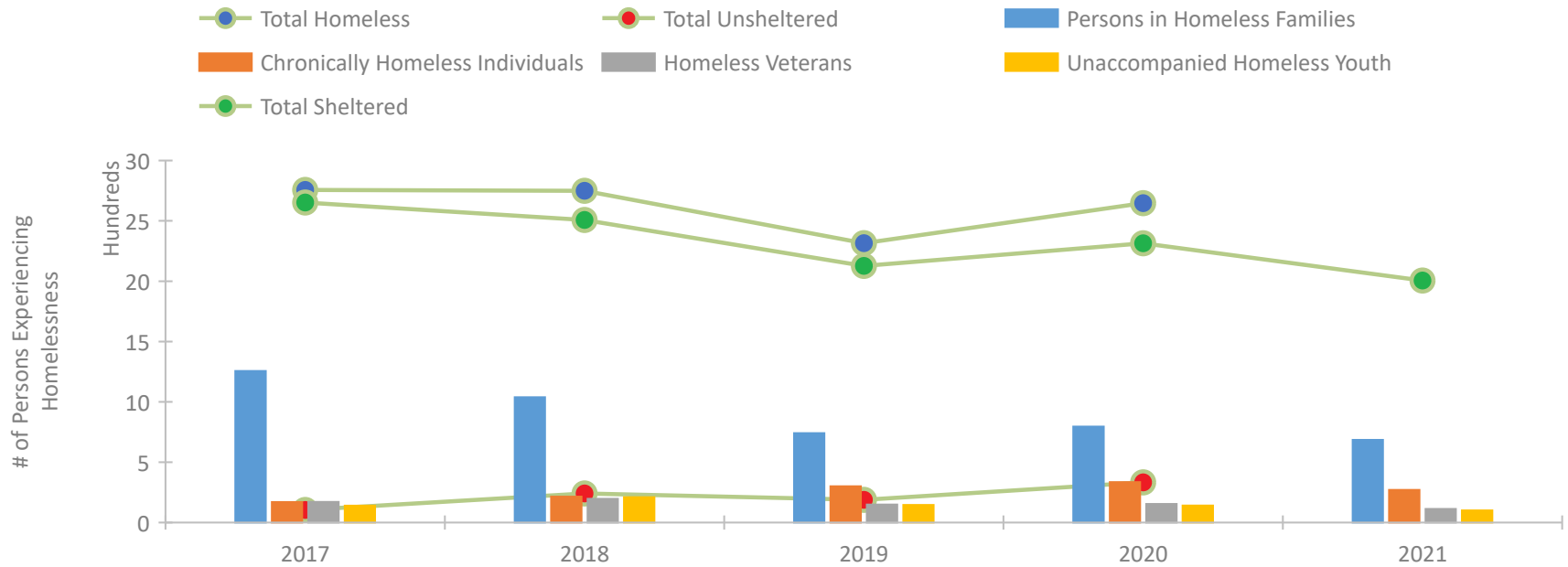


2021 CoC Boundaries    2020 CoC Boundaries

### Housing Inventory Count by Program Type



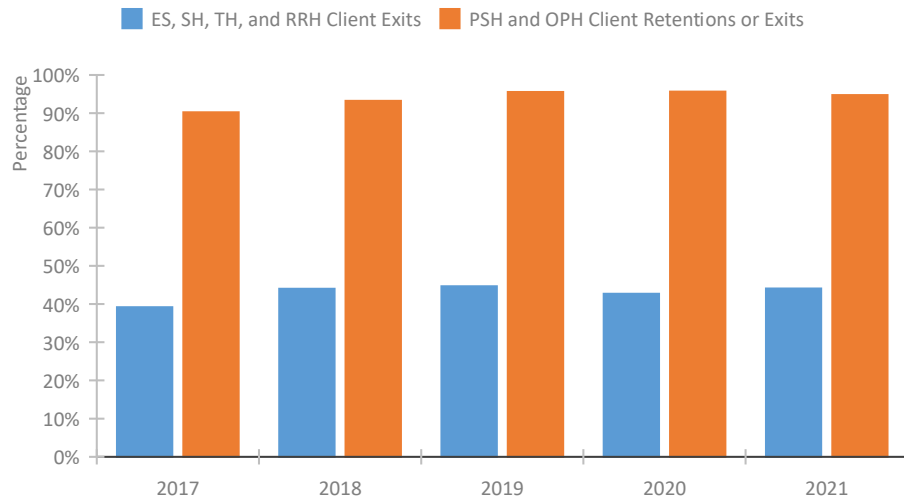
### Homeless Population – Point-in-Time (PIT) Count\*



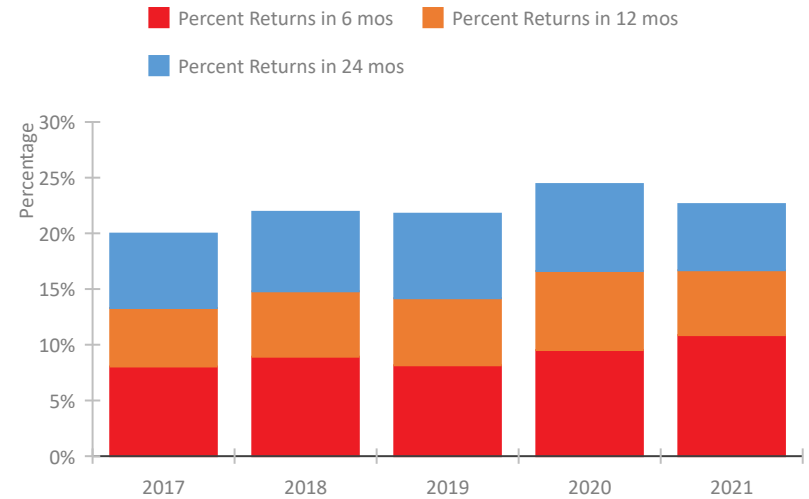
\*In 2021, HUD gave communities the option to cancel or modify the unsheltered survey portion of their counts based on the potential risk of COVID-19 transmission associated with conducting an in-person survey. As a result, HUD has excluded the unsheltered population sub-totals and all unsheltered sub-population data for this reporting period. The user is cautioned that the unsheltered and total homeless counts reported here may be missing data.

## Iowa Continuum of Care Performance Profile

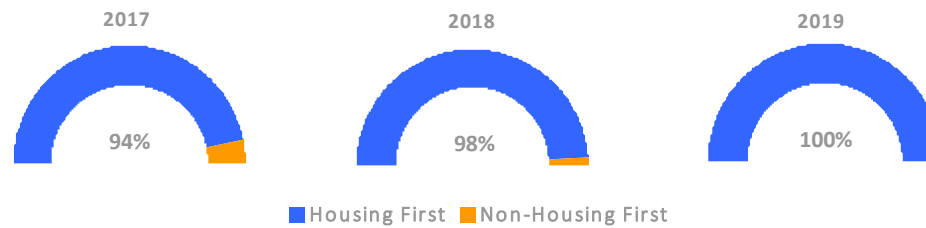
### Exits to Permanent Housing by Program Type



### Returns to Homelessness Over Time



### Proportion of Housing First Projects by Year†



### Number of Projects by Year

	2017	2018	2019
Housing First Projects	45	50	46
Non-Housing First Projects	3	1	0

†2021 Data unavailable at the time of report publication. In 2020 HUD awarded renewal projects noncompetitively, therefore no new data was collected and Housing First data remains the same from 2019 to 2020.

## Data Summary: Iowa

### Point-In-Time Count Summary\*

	2017	2018	2019	2020	2021	2020-21 Change	% Change
Number of Sheltered Persons in Families	1,256	1,017	734	791	685	-106	-13%
Number of Unsheltered Persons in Families	0	21	7	4	0	-4	-100%
Number of Sheltered Individuals	1,396	1,491	1,393	1,523	1,321	-202	-13%
Number of Unsheltered Individuals	104	220	181	329	--	--	--
<b>Total Homeless Persons</b>	<b>2,756</b>	<b>2,749</b>	<b>2,315</b>	<b>2,647</b>	<b>2,006</b>	<b>-641</b>	<b>-24%</b>
Number of Sheltered Families	382	320	224	243	214	-29	-12%
Number of Unsheltered Families	0	5	3	2	--	--	--
<b>Number of Total Families</b>	<b>382</b>	<b>325</b>	<b>227</b>	<b>245</b>	<b>214</b>	<b>-31</b>	<b>-13%</b>
Sheltered Chronically Homeless Individuals	114	151	239	257	270	13	5%
Unsheltered Chronically Homeless Individuals	56	64	62	78	--	--	--
<b>Total Chronically Homeless Individuals</b>	<b>170</b>	<b>215</b>	<b>301</b>	<b>335</b>	<b>270</b>	<b>-65</b>	<b>-19%</b>
Sheltered Veterans	153	177	137	136	112	-24	-18%
Unsheltered Veterans	18	19	12	18	--	--	--
<b>Total Veterans</b>	<b>171</b>	<b>196</b>	<b>149</b>	<b>154</b>	<b>112</b>	<b>-42</b>	<b>-27%</b>
Sheltered Unaccompanied Youth (up to 24)	136	187	130	114	100	-14	-12%
Unsheltered Unaccompanied Youth (up to 24)	4	22	16	27	--	--	--
<b>Total Unaccompanied Youth (up to 24)</b>	<b>140</b>	<b>209</b>	<b>146</b>	<b>141</b>	<b>100</b>	<b>-41</b>	<b>-29%</b>

### System Performance Measures Summary

	2017	2018	2019	2020	2021	2020-21 Change	% Change
Rate People Return to Homelessness in 6 Months	8.0%	8.9%	8.2%	9.5%	10.9%	1.3%	N/A
Number of People who are Homeless for the First Time	7,470	6,956	7,360	6,425	6,639	214	3.3%
Rate People Exit from ES, SH, TH, and RRH to PH	39.2%	44.0%	44.7%	42.7%	44.1%	1.3%	N/A
Rate People in PSH and OPH Retain or Exit to PH	90.2%	93.2%	95.5%	95.6%	94.7%	-0.9%	N/A

### Housing Inventory Count Summary

	2017	2018	2019	2020	2021	2020-21 Change	% Change
Emergency Shelter (ES)	1,524	1,601	1,549	1,620	1,674	54	3%
Safe Haven (SH)	--	24	24	24	28	4	17%
Transitional Housing (TH)	1,742	1,401	945	922	855	-67	-7%
Permanent Supportive Housing (PSH)	1,069	1,054	1,036	1,060	1,073	13	1%
Rapid Re-Housing (RRH)	629	794	804	1,041	1,611	570	55%
Other Permanent Housing (OPH)	199	234	239	239	208	-31	-13%

### Award Summary

	2017	2018	2019	2020	2021	2020-21 Change	% Change
<b>Continuum of Care (CoC)</b>	\$9,108,676	\$9,507,330	\$9,950,673	\$10,134,883	\$11,432,232	\$1,297,349	13%
<b>Emergency Solutions Grants (ESG)</b>	\$3,341,884	\$2,983,483	\$3,109,819	\$3,244,114	\$3,264,446	\$20,332	1%
<b>Youth Homelessness Demonstration Program (YHDP)</b>	--	\$1,865,045	--	--	--	--	--

\*In 2021, HUD gave communities the option to cancel or modify the unsheltered survey portion of their counts based on the potential risk of COVID-19 transmission associated with conducting an in-person survey. As a result, HUD has excluded the unsheltered population sub-totals and all unsheltered sub-population data for this reporting period. The user is cautioned that the unsheltered and total homeless counts reported here may be missing data.