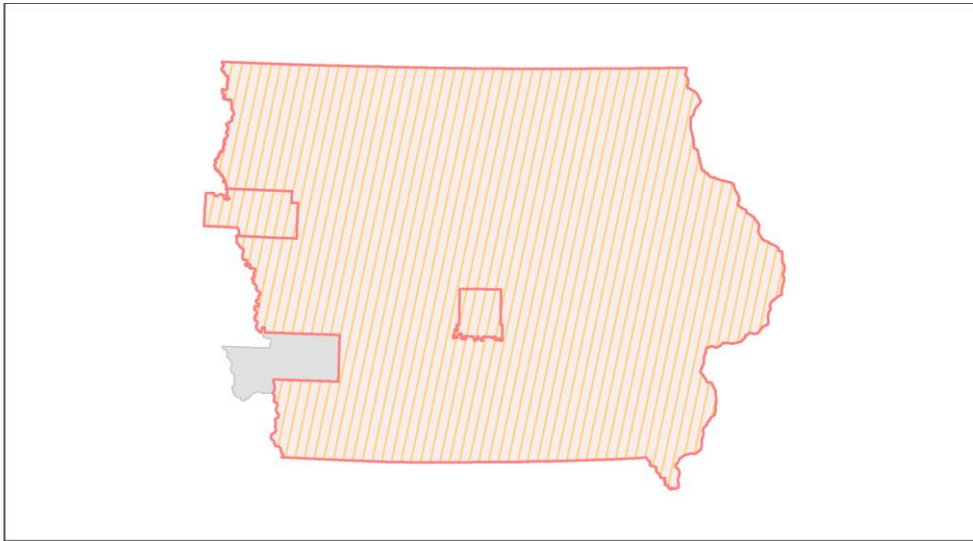
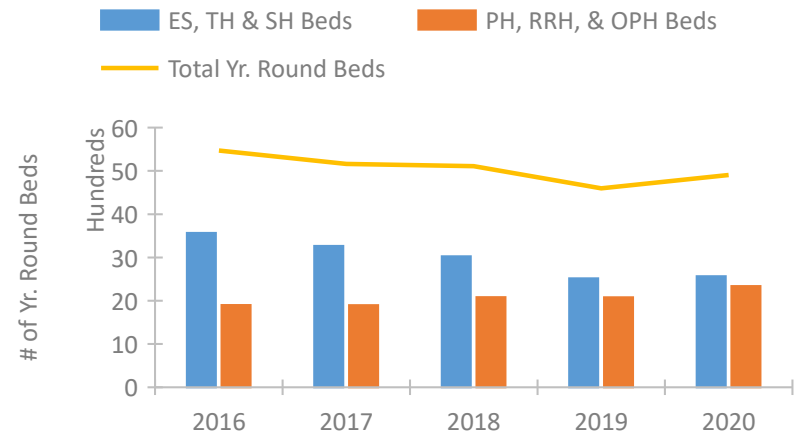


Iowa Continuum of Care Performance Profile

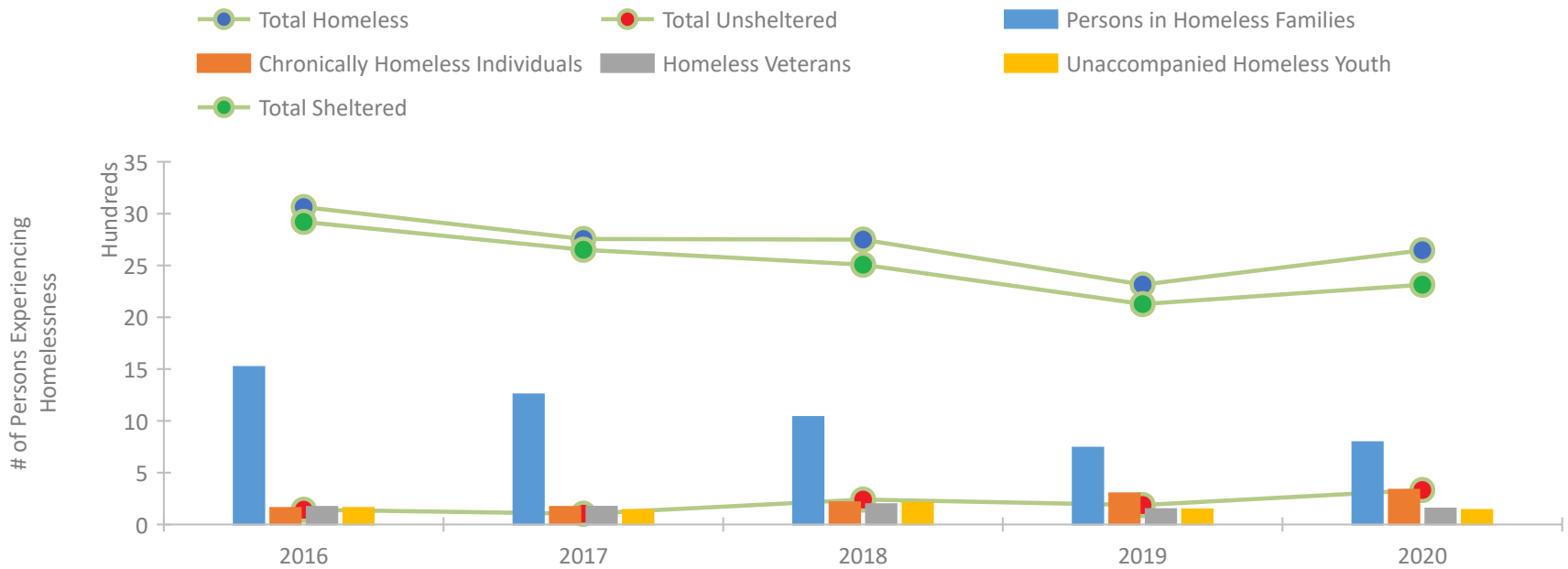


2020 CoC Boundaries 2019 CoC Boundaries

Housing Inventory Count by Program Type

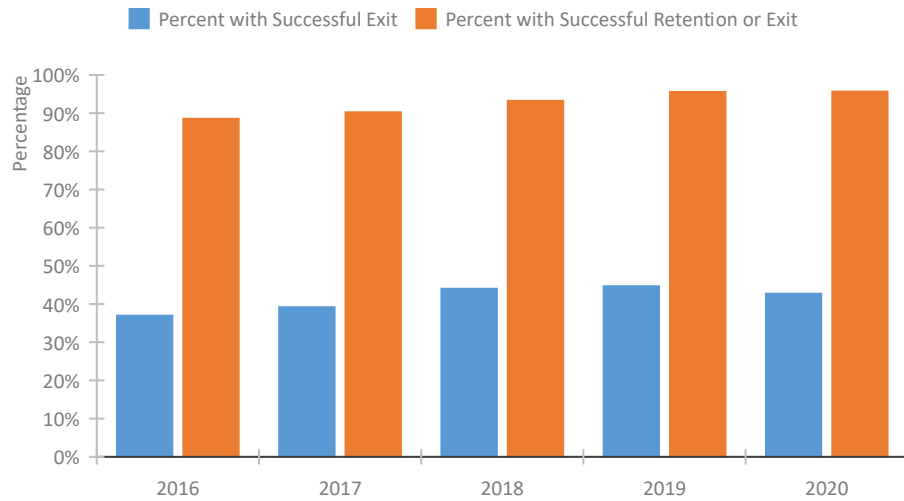


Homeless Population – Point-in-Time (PIT) Count

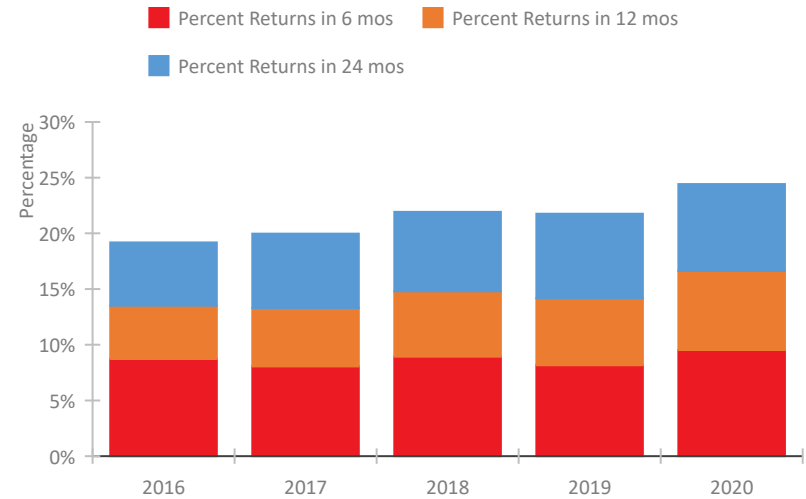


Iowa Continuum of Care Performance Profile

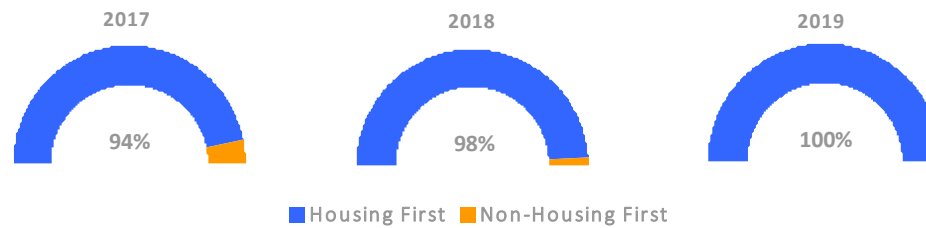
Exits to Permanent Housing by Program Type



Returns to Homelessness Over Time



Proportion of Housing First Projects by Year*



Number of Projects by Year

	2017	2018	2019
Housing First Projects	45	50	46
Non-Housing First Projects	3	1	0

*In 2020 HUD awarded renewal projects noncompetitively, therefore no new data was collected and Housing First data remains the same from 2019 to 2020.

Data Summary: Iowa

Point-In-Time Count Summary

	2016	2017	2018	2019	2020	2019-20 Change	% Change
Number of Sheltered Persons in Families	1,521	1,256	1,017	734	791	57	8%
Number of Unsheltered Persons in Families	0	0	21	7	4	-3	-43%
Number of Sheltered Individuals	1,400	1,396	1,491	1,393	1,523	130	9%
Number of Unsheltered Individuals	143	104	220	181	329	148	82%
Total Homeless Persons	3,064	2,756	2,749	2,315	2,647	332	14%
Number of Sheltered Families	466	382	320	224	243	19	8%
Number of Unsheltered Families	0	0	5	3	2	-1	-33%
Number of Total Families	466	382	325	227	245	18	8%
Sheltered Chronically Homeless Individuals	112	114	151	239	257	18	8%
Unsheltered Chronically Homeless Individuals	47	56	64	62	78	16	26%
Total Chronically Homeless Individuals	159	170	215	301	335	34	11%
Sheltered Veterans	154	153	177	137	136	-1	-1%
Unsheltered Veterans	16	18	19	12	18	6	50%
Total Veterans	170	171	196	149	154	5	3%
Sheltered Unaccompanied Youth (up to 24)	150	136	187	130	114	-16	-12%
Unsheltered Unaccompanied Youth (up to 24)	10	4	22	16	27	11	69%
Total Unaccompanied Youth (up to 24)	160	140	209	146	141	-5	-3%

System Performance Measures Summary

	2016	2017	2018	2019	2020	2019-20 Change	% Change
Rate People Return to Homelessness in 6 Months	8.7%	8.0%	8.9%	8.2%	9.5%	1.4%	N/A
Number of People who are Homeless for the First Time	7,860	7,470	6,956	7,360	6,425	-935	-12.7%
Rate People Exit from ES, SH, TH, and RRH to PH	36.9%	39.2%	44.0%	44.7%	42.7%	-2%	N/A
Rate People in PSH and OPH Retain or Exit to PH	88.5%	90.2%	93.2%	95.5%	95.6%	0.1%	N/A

Housing Inventory Count Summary

	2016	2017	2018	2019	2020	2019-20 Change	% Change
Emergency Shelter (ES)	1,483	1,524	1,601	1,549	1,620	71	5%
Safe Haven (SH)	--	--	24	24	24	0	-0%
Transitional Housing (TH)	2,085	1,742	1,401	945	922	-23	-2%
Permanent Supportive Housing (PSH)	1,102	1,069	1,054	1,036	1,060	24	2%
Rapid Re-Housing (RRH)	642	629	794	804	1,041	237	29%
Other Permanent Housing (OPH)	158	199	234	239	239	0	-0%

Award Summary

	2016	2017	2018	2019	2020	2019-20 Change	% Change
Continuum of Care (CoC)	\$8,838,430	\$9,108,676	\$9,507,330	\$9,950,673	\$10,134,883	\$184,210	2%
Emergency Solutions Grants (ESG)	\$2,968,227	\$3,341,884	\$2,983,483	\$3,109,819	\$3,244,114	\$134,295	4%
Youth Homelessness Demonstration Program (YHDP)	--	--	\$1,865,045	--	--	--	--