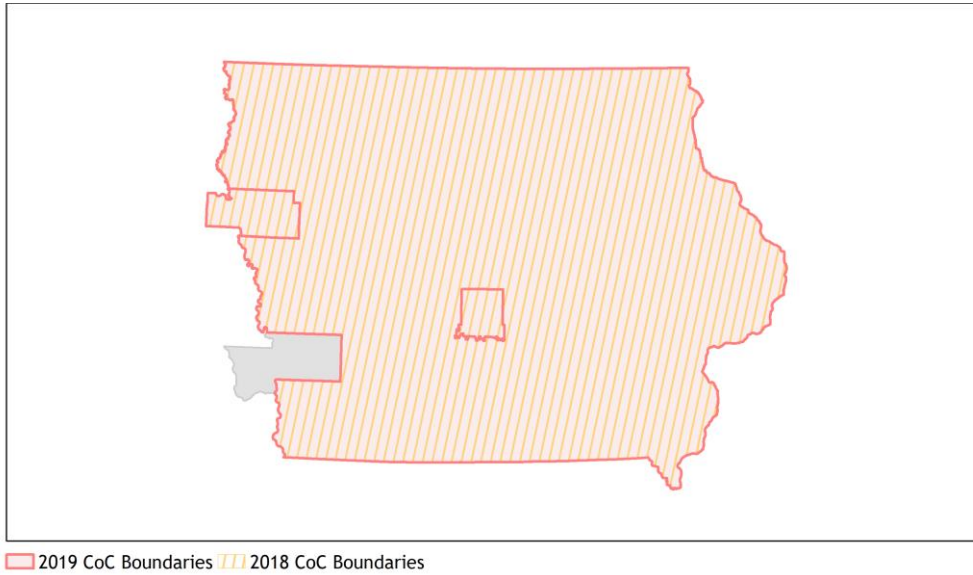
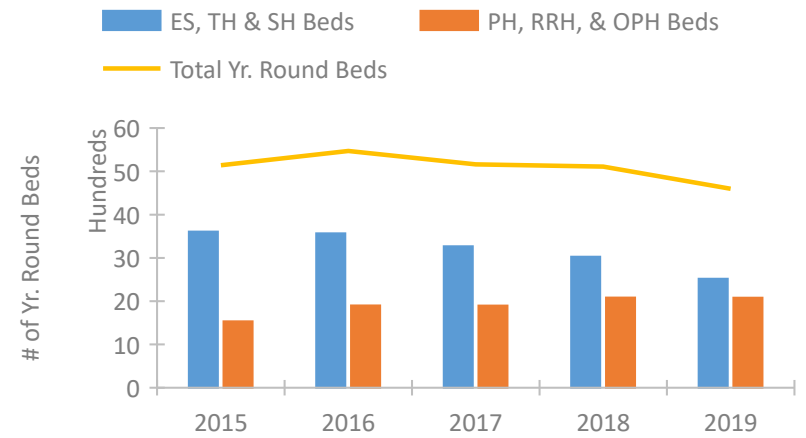


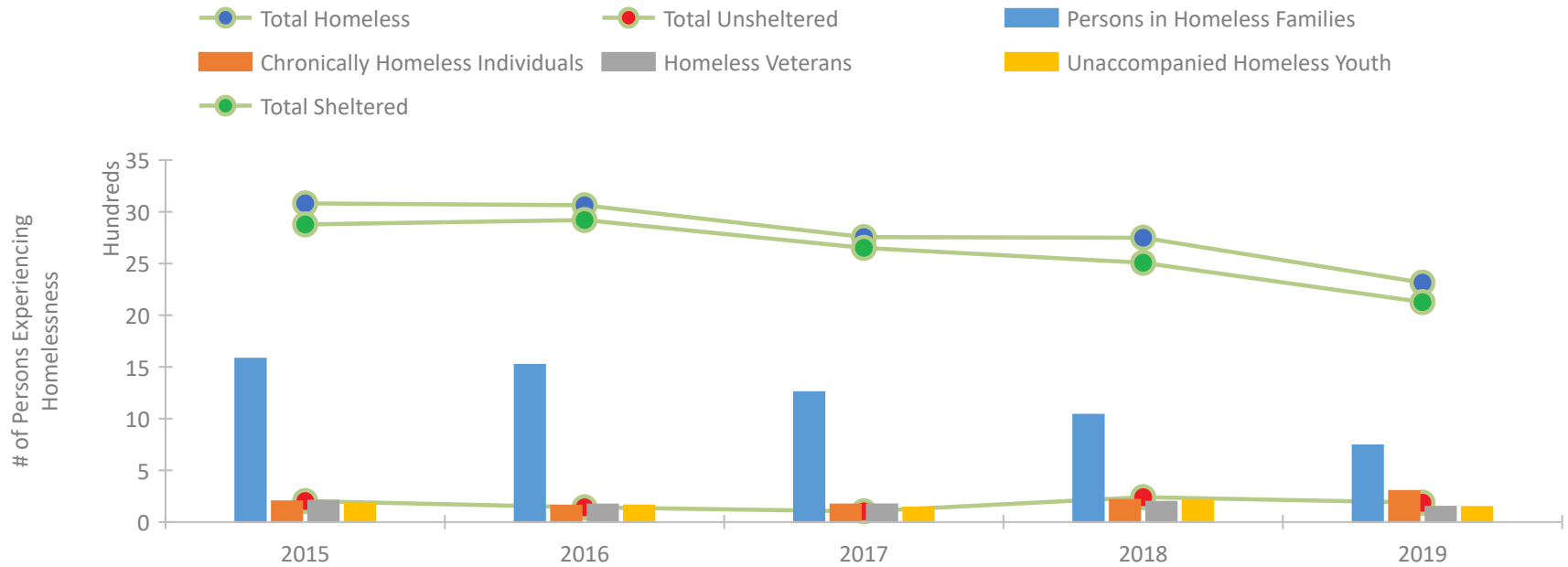
## Iowa Continuum of Care Performance Profile



### Housing Inventory Count by Program Type

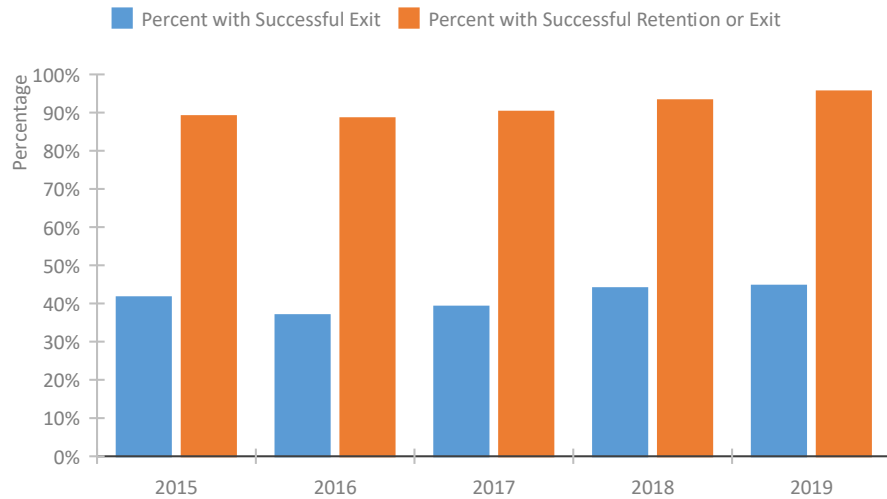


### Homeless Population – Point-in-Time (PIT) Count

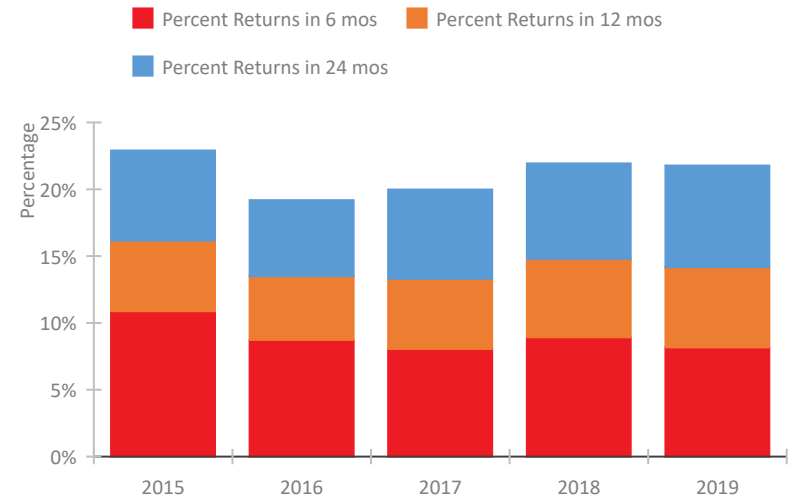


## Iowa Continuum of Care Performance Profile

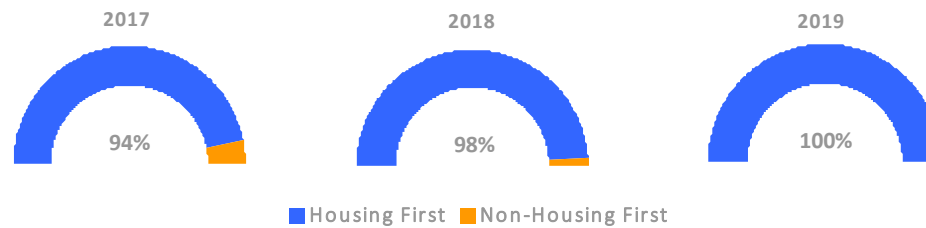
### Exits to Permanent Housing by Program Type



### Returns to Homelessness Over Time



### Proportion of Housing First Projects by Year



### Number of Projects by Year

	2017	2018	2019
Housing First Projects	45	50	46
Non-Housing First Projects	3	1	0

## Data Summary: Iowa

### Point-In-Time Count Summary

	2015	2016	2017	2018	2019	2018-19 Change	% Change
Number of Sheltered Persons in Families	1,576	1,521	1,256	1,017	734	-283	-28%
Number of Unsheltered Persons in Families	4	0	0	21	7	-14	-67%
Number of Sheltered Individuals	1,302	1,400	1,396	1,491	1,393	-98	-7%
Number of Unsheltered Individuals	199	143	104	220	181	-39	-18%
<b>Total Homeless Persons</b>	<b>3,081</b>	<b>3,064</b>	<b>2,756</b>	<b>2,749</b>	<b>2,315</b>	<b>-434</b>	<b>-16%</b>
Number of Sheltered Families	495	466	382	320	224	-96	-30%
Number of Unsheltered Families	1	0	0	5	3	-2	-40%
<b>Number of Total Families</b>	<b>496</b>	<b>466</b>	<b>382</b>	<b>325</b>	<b>227</b>	<b>-98</b>	<b>-30%</b>
Sheltered Chronically Homeless Individuals	147	112	114	151	239	88	58%
Unsheltered Chronically Homeless Individuals	54	47	56	64	62	-2	-3%
<b>Total Chronically Homeless Individuals</b>	<b>201</b>	<b>159</b>	<b>170</b>	<b>215</b>	<b>301</b>	<b>86</b>	<b>40%</b>
Sheltered Veterans	175	154	153	177	137	-40	-23%
Unsheltered Veterans	32	16	18	19	12	-7	-37%
<b>Total Veterans</b>	<b>207</b>	<b>170</b>	<b>171</b>	<b>196</b>	<b>149</b>	<b>-47</b>	<b>-24%</b>
Sheltered Unaccompanied Youth (up to 24)	176	150	136	187	130	-57	-30%
Unsheltered Unaccompanied Youth (up to 24)	3	10	4	22	16	-6	-27%
<b>Total Unaccompanied Youth (up to 24)</b>	<b>179</b>	<b>160</b>	<b>140</b>	<b>209</b>	<b>146</b>	<b>-63</b>	<b>-30%</b>

### System Performance Measures Summary

	2015	2016	2017	2018	2019	2018-19 Change	% Change
Rate People Return to Homelessness in 6 Months	10.9%	8.7%	8.0%	8.9%	8.2%	-0.8%	N/A
Number of People who are Homeless for the First Time	7,708	7,860	7,470	6,956	7,360	404	5.8%
Rate People Exit from ES, SH, TH, and RRH to PH	41.6%	36.9%	39.2%	44.0%	44.7%	0.7%	N/A
Rate People in PSH and OPH Retain or Exit to PH	89.1%	88.5%	90.2%	93.2%	95.5%	2.3%	N/A

### Housing Inventory Count Summary

	2015	2016	2017	2018	2019	2018-19 Change	% Change
Emergency Shelter (ES)	1,615	1,483	1,524	1,601	1,549	-52	-3%
Safe Haven (SH)	--	--	--	24	24	0	0%
Transitional Housing (TH)	1,991	2,085	1,742	1,401	945	-456	-33%
Permanent Supportive Housing (PSH)	1,022	1,102	1,069	1,054	1,036	-18	-2%
Rapid Re-Housing (RRH)	271	642	629	794	804	10	1%
Other Permanent Housing (OPH)	241	158	199	234	239	5	2%

### Award Summary

	2015	2016	2017	2018	2019	2018-19 Change	% Change
<b>Continuum of Care (CoC)</b>	\$8,427,262	\$8,838,430	\$9,108,676	\$9,507,330	\$9,950,673	\$443,343	5%
<b>Emergency Solutions Grants (ESG)</b>	\$2,980,138	\$2,968,227	\$3,341,884	\$2,983,483	\$3,109,819	\$126,336	4%
<b>Youth Homelessness Demonstration Program (YHDP)</b>	N/A	--	--	\$1,865,045	--	--	--