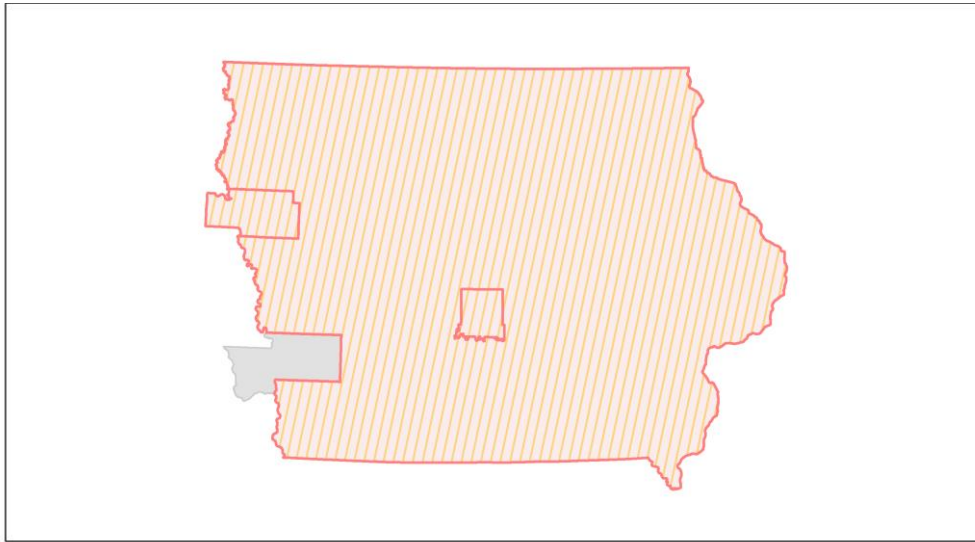
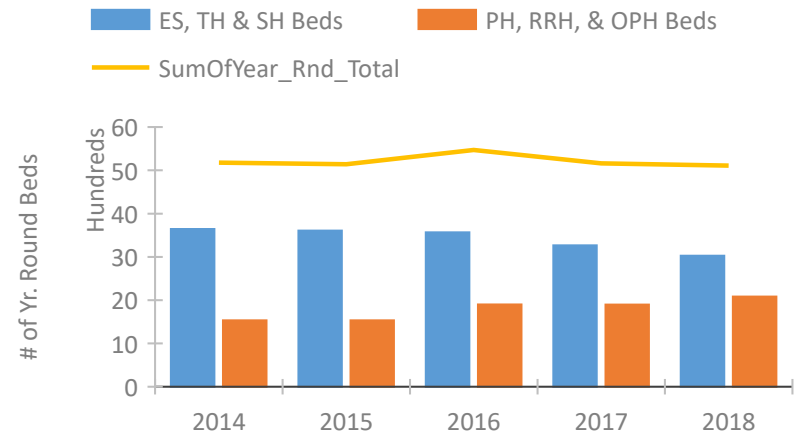


Iowa Continuum of Care Performance Profile

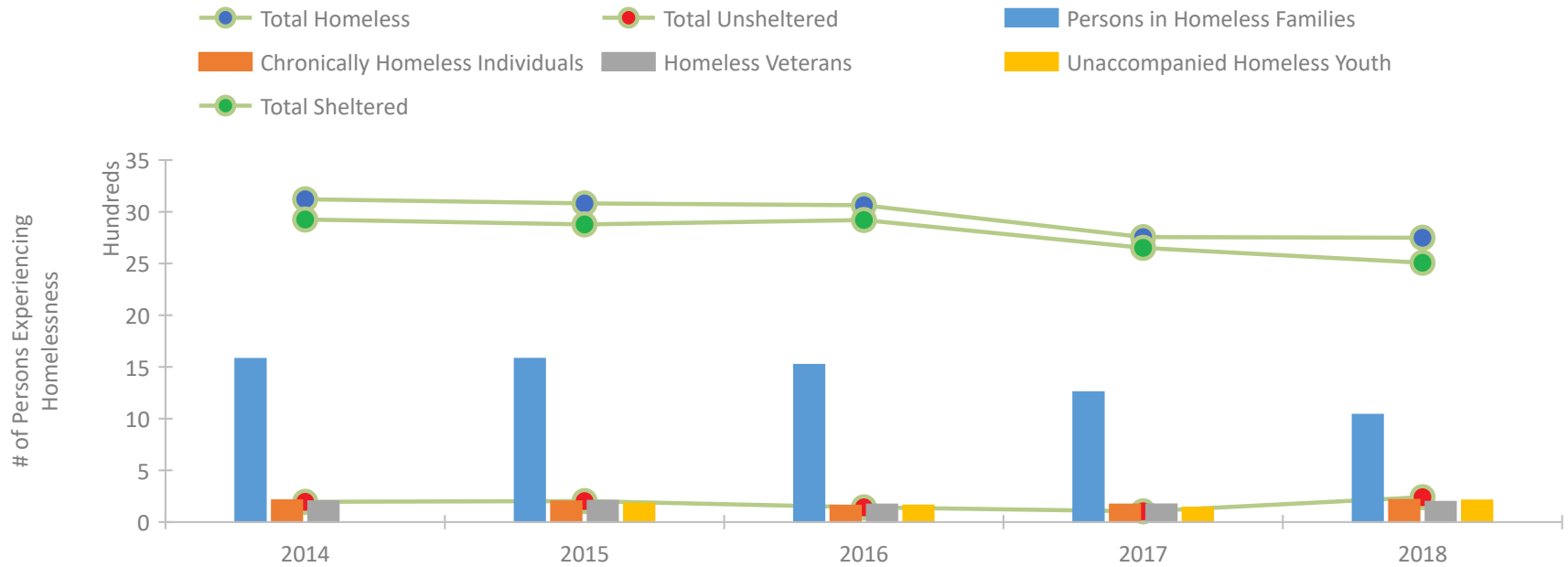


2018 CoC Boundaries 2017 CoC Boundaries

Housing Inventory Count by Program Type

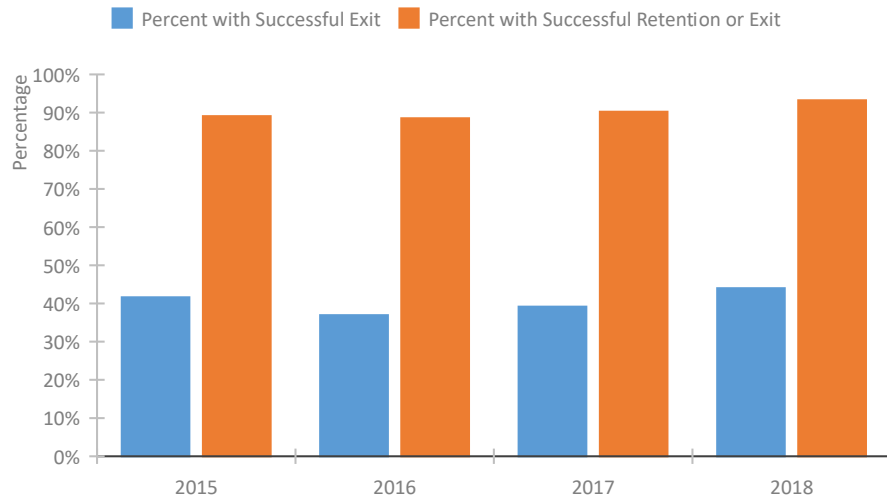


Homeless Population – Point-in-Time (PIT) Count

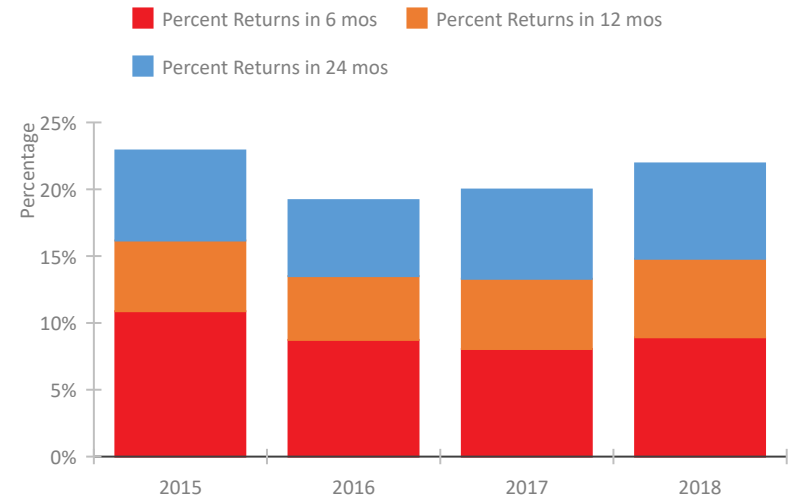


Iowa Continuum of Care Performance Profile

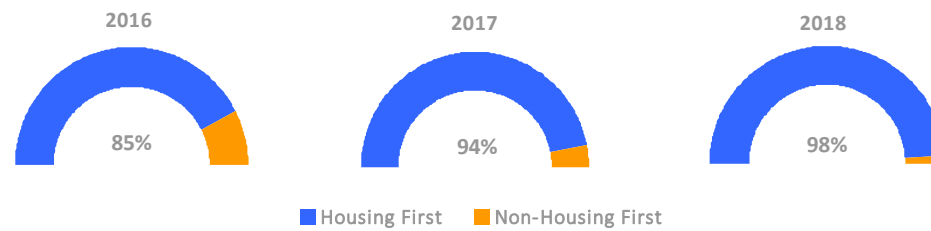
Exits to Permanent Housing by Program Type



Returns to Homelessness Over Time



Proportion of Housing First Projects by Year



Number of Projects by Year

	2016	2017	2018
Housing First Projects	34	45	50
Non-Housing First Projects	6	3	1

Data Summary: Iowa

Point-In-Time Count Summary

	2014	2015	2016	2017	2018	2017-18 Change	% Change
Number of Sheltered Persons in Families	1,558	1,576	1,521	1,256	1,017	-239	-19%
Number of Unsheltered Persons in Families	20	4	0	0	21	21	100%
Number of Sheltered Individuals	1,360	1,298	1,380	1,384	1,477	93	7%
Number of Unsheltered Individuals	176	199	143	104	219	115	111%
Total Homeless Persons	3,114	3,077	3,044	2,744	2,734	-10	0%
Number of Sheltered Families	482	495	466	382	320	-62	-16%
Number of Unsheltered Families	5	1	0	0	5	5	100%
Number of Total Families	487	496	466	382	325	-57	-15%
Sheltered Chronically Homeless Individuals	121	147	112	114	151	37	32%
Unsheltered Chronically Homeless Individuals	90	54	47	56	64	8	14%
Total Chronically Homeless Individuals	211	201	159	170	215	45	26%
Sheltered Veterans	177	175	154	153	177	24	16%
Unsheltered Veterans	25	32	16	18	19	1	6%
Total Veterans	202	207	170	171	196	25	15%
Sheltered Unaccompanied Youth (up to 24)	--	176	150	136	187	51	38%
Unsheltered Unaccompanied Youth (up to 24)	--	3	10	4	22	18	450%
Total Unaccompanied Youth (up to 24)	--	179	160	140	209	69	49%

System Performance Measures Summary

	2014	2015	2016	2017	2018	2017-18 Change	% Change
Rate People Return to Homelessness in 6 Months	N/A	10.9%	8.7%	8.0%	8.9%	0.9%	N/A
Number of People who are Homeless for the First Time	N/A	7,708	7,860	7,470	6,956	-514	-6.9%
Rate People Exit from ES, SH, TH, and RRH to PH	N/A	41.6%	36.9%	39.2%	44.0%	4.8%	N/A
Rate People in PSH and OPH Retain or Exit to PH	N/A	89.1%	88.5%	90.2%	93.2%	3%	N/A

Housing Inventory Count Summary

	2014	2015	2016	2017	2018	2017-18 Change	% Change
Emergency Shelter (ES)	1,681	1,615	1,483	1,524	1,601	77	5%
Safe Haven (SH)	--	--	--	--	24	--	--
Transitional Housing (TH)	1,962	1,991	2,085	1,742	1,401	-341	-20%
Permanent Supportive Housing (PSH)	1,098	1,022	1,102	1,069	1,054	-15	-1%
Rapid Re-Housing (RRH)	264	271	642	629	794	165	26%
Other Permanent Housing (OPH)	171	241	158	199	234	35	18%

Award Summary

	2014	2015	2016	2017	2018	2017-18 Change	% Change
Continuum of Care (CoC)	\$8,346,433	\$8,427,262	\$8,838,430	\$9,108,676	\$9,507,330	\$398,654	4%
Emergency Solutions Grants (ESG)	\$2,757,341	\$2,844,180	\$2,833,009	\$3,062,169	\$2,983,483	(\$78,686)	-3%
Youth Homelessness Demonstration Program (YHDP)	N/A	N/A	--	--	\$1,865,045	--	--