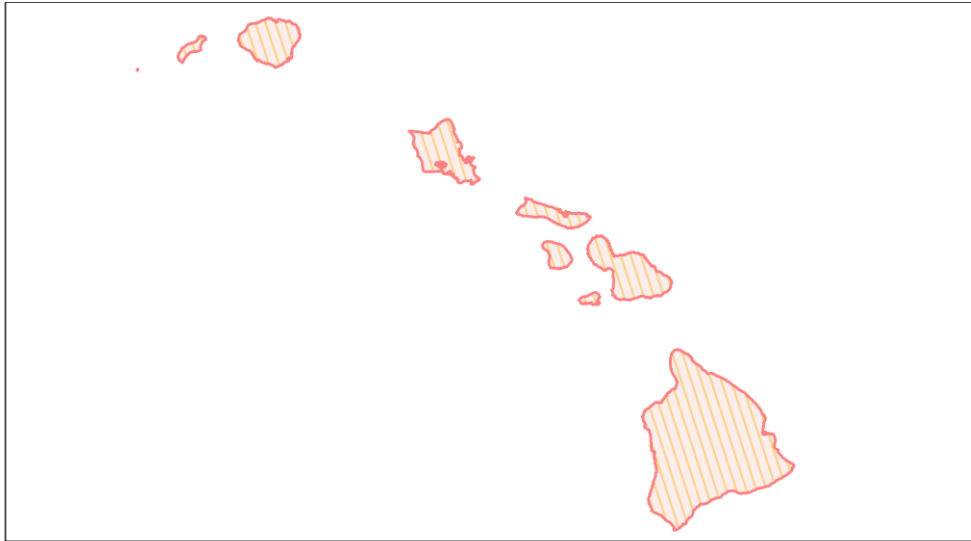
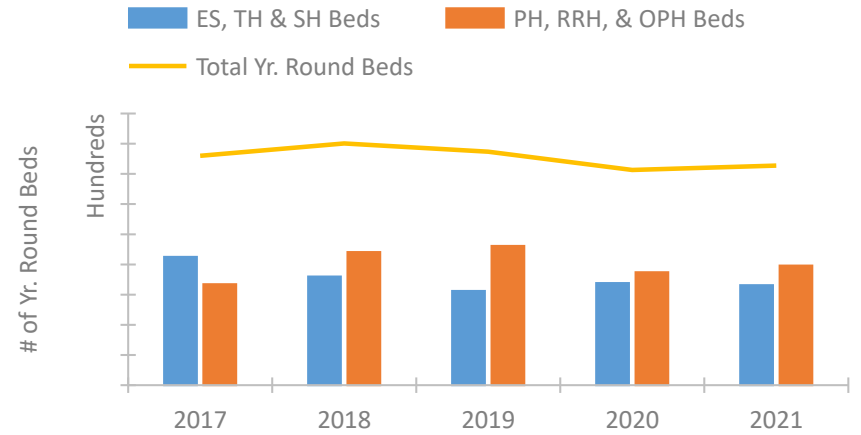


Hawaii Continuum of Care Performance Profile

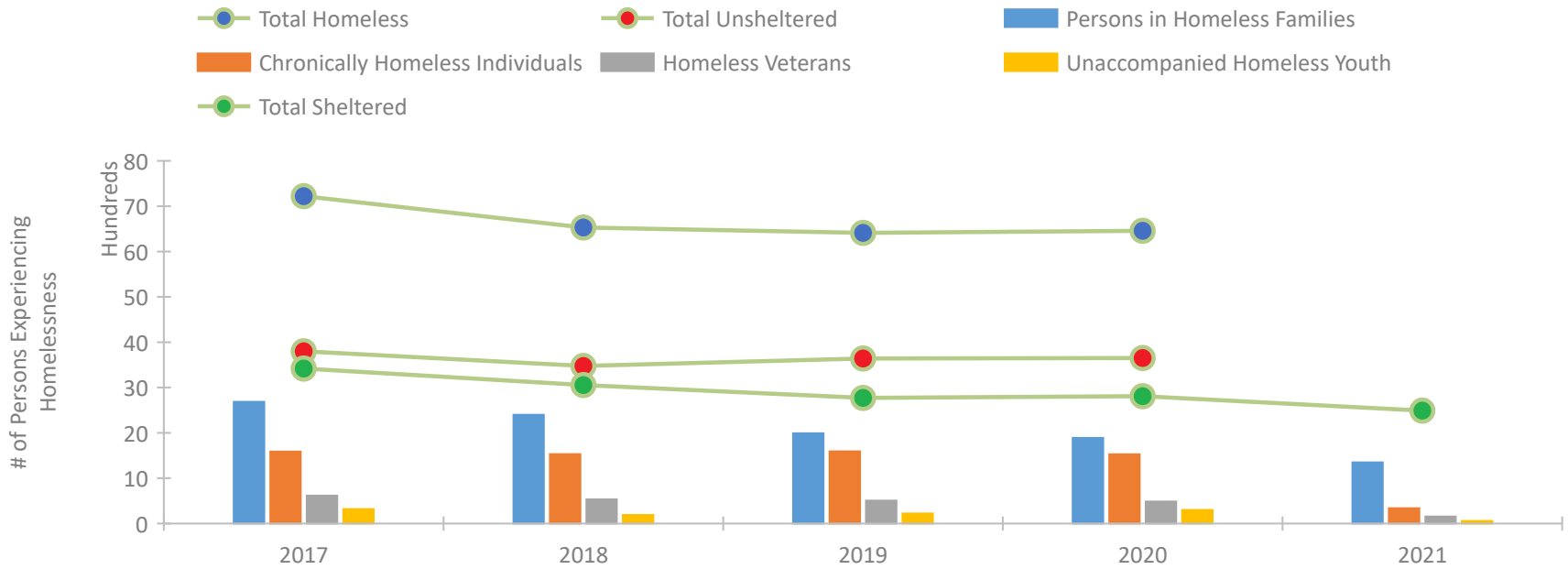


2021 CoC Boundaries 2020 CoC Boundaries

Housing Inventory Count by Program Type



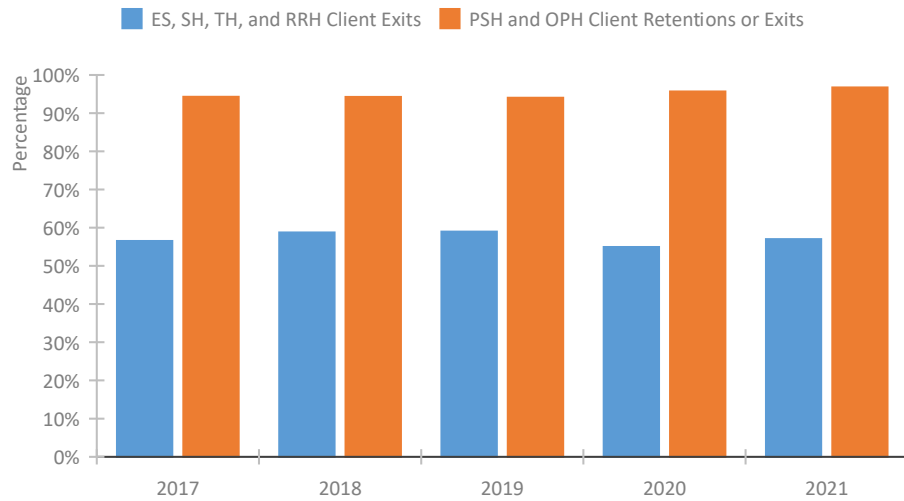
Homeless Population – Point-in-Time (PIT) Count*



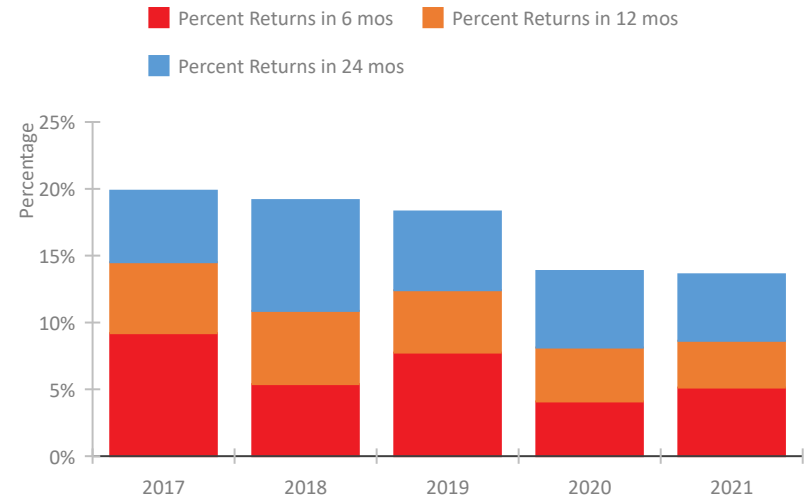
*In 2021, HUD gave communities the option to cancel or modify the unsheltered survey portion of their counts based on the potential risk of COVID-19 transmission associated with conducting an in-person survey. As a result, HUD has excluded the unsheltered population sub-totals and all unsheltered sub-population data for this reporting period. The user is cautioned that the unsheltered and total homeless counts reported here may be missing data.

Hawaii Continuum of Care Performance Profile

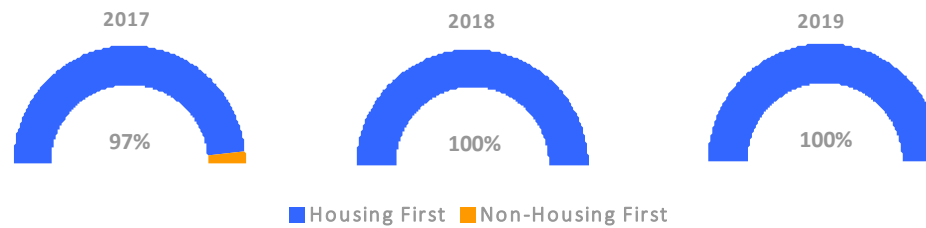
Exits to Permanent Housing by Program Type



Returns to Homelessness Over Time



Proportion of Housing First Projects by Year†



Number of Projects by Year

	2017	2018	2019
Housing First Projects	29	33	26
Non-Housing First Projects	1	0	0

†2021 Data unavailable at the time of report publication. In 2020 HUD awarded renewal projects noncompetitively, therefore no new data was collected and Housing First data remains the same from 2019 to 2020.

Data Summary: Hawaii

Point-In-Time Count Summary*

	2017	2018	2019	2020	2021	2020-21 Change	% Change
Number of Sheltered Persons in Families	2,162	1,840	1,538	1,463	1,348	-115	-8%
Number of Unsheltered Persons in Families	523	559	454	427	0	-427	-100%
Number of Sheltered Individuals	1,258	1,215	1,234	1,345	1,142	-203	-15%
Number of Unsheltered Individuals	3,277	2,916	3,186	3,223	--	--	--
Total Homeless Persons	7,220	6,530	6,412	6,458	2,490	-3,968	-61%
Number of Sheltered Families	539	475	425	380	354	-26	-7%
Number of Unsheltered Families	127	148	114	119	--	--	--
Number of Total Families	666	623	539	499	354	-145	-29%
Sheltered Chronically Homeless Individuals	164	202	226	342	338	-4	-1%
Unsheltered Chronically Homeless Individuals	1,424	1,327	1,366	1,185	--	--	--
Total Chronically Homeless Individuals	1,588	1,529	1,592	1,527	338	-1,189	-78%
Sheltered Veterans	237	240	210	244	153	-91	-37%
Unsheltered Veterans	378	292	295	241	--	--	--
Total Veterans	615	532	505	485	153	-332	-68%
Sheltered Unaccompanied Youth (up to 24)	56	50	73	89	56	-33	-37%
Unsheltered Unaccompanied Youth (up to 24)	263	139	149	210	--	--	--
Total Unaccompanied Youth (up to 24)	319	189	222	299	56	-243	-81%

System Performance Measures Summary

	2017	2018	2019	2020	2021	2020-21 Change	% Change
Rate People Return to Homelessness in 6 Months	9.2%	5.4%	7.7%	4.1%	5.1%	1%	N/A
Number of People who are Homeless for the First Time	5,783	5,047	4,648	3,965	3,820	-145	-3.7%
Rate People Exit from ES, SH, TH, and RRH to PH	56.5%	58.7%	59.0%	54.9%	57.0%	2.1%	N/A
Rate People in PSH and OPH Retain or Exit to PH	94.3%	94.2%	94.0%	95.7%	96.7%	1.1%	N/A

Housing Inventory Count Summary

	2017	2018	2019	2020	2021	2020-21 Change	% Change
Emergency Shelter (ES)	1,693	1,838	1,757	2,055	2,281	226	11%
Safe Haven (SH)	25	35	44	42	54	12	29%
Transitional Housing (TH)	2,534	1,726	1,320	1,287	977	-310	-24%
Permanent Supportive Housing (PSH)	2,126	2,540	3,209	2,554	2,463	-91	-4%
Rapid Re-Housing (RRH)	1,219	1,869	1,344	1,190	1,431	241	20%
Other Permanent Housing (OPH)	--	--	60	--	70	--	--

Award Summary

	2017	2018	2019	2020	2021	2020-21 Change	% Change
Continuum of Care (CoC)	\$11,762,496	\$12,096,595	\$12,917,169	\$12,936,104	\$17,099,461	\$4,163,357	32%
Emergency Solutions Grants (ESG)	\$2,374,995	\$1,086,925	\$1,131,253	\$1,159,207	\$1,150,550	(\$8,657)	-1%
Youth Homelessness Demonstration Program (YHDP)	--	\$3,804,756	--	--	--	--	--

*In 2021, HUD gave communities the option to cancel or modify the unsheltered survey portion of their counts based on the potential risk of COVID-19 transmission associated with conducting an in-person survey. As a result, HUD has excluded the unsheltered population sub-totals and all unsheltered sub-population data for this reporting period. The user is cautioned that the unsheltered and total homeless counts reported here may be missing data.