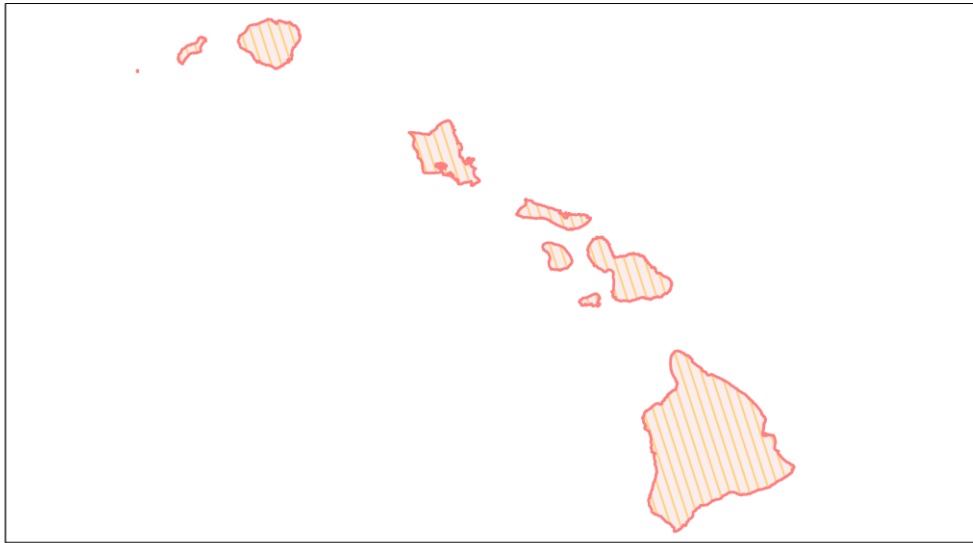
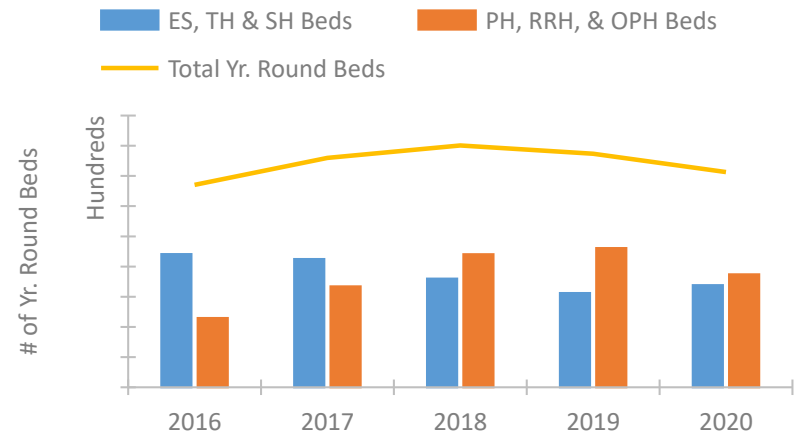


Hawaii Continuum of Care Performance Profile

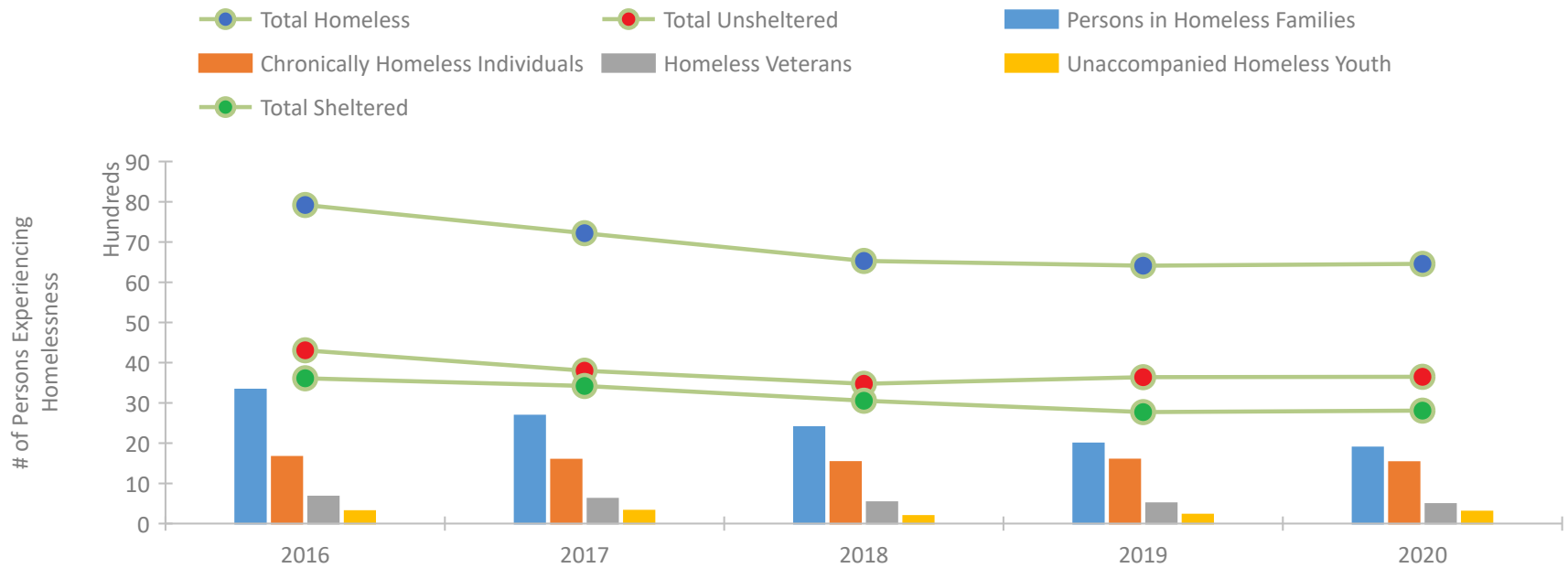


2020 CoC Boundaries 2019 CoC Boundaries

Housing Inventory Count by Program Type



Homeless Population – Point-in-Time (PIT) Count

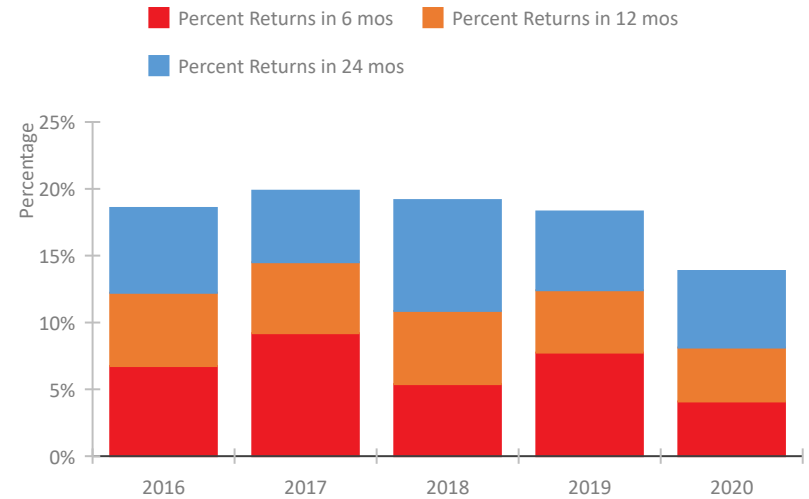


Hawaii Continuum of Care Performance Profile

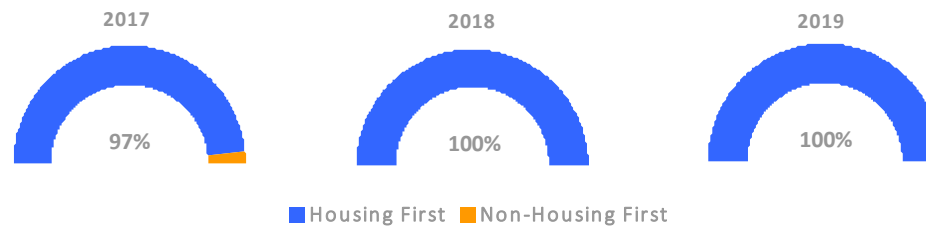
Exits to Permanent Housing by Program Type



Returns to Homelessness Over Time



Proportion of Housing First Projects by Year*



Number of Projects by Year			
	2017	2018	2019
Housing First Projects	29	33	26
Non-Housing First Projects	1	0	0

*In 2020 HUD awarded renewal projects noncompetitively, therefore no new data was collected and Housing First data remains the same from 2019 to 2020.

Data Summary: Hawaii

Point-In-Time Count Summary

	2016	2017	2018	2019	2020	2019-20 Change	% Change
Number of Sheltered Persons in Families	2,331	2,162	1,840	1,538	1,463	-75	-5%
Number of Unsheltered Persons in Families	1,000	523	559	454	427	-27	-6%
Number of Sheltered Individuals	1,282	1,258	1,215	1,234	1,345	111	9%
Number of Unsheltered Individuals	3,308	3,277	2,916	3,186	3,223	37	1%
Total Homeless Persons	7,921	7,220	6,530	6,412	6,458	46	1%
Number of Sheltered Families	569	539	475	425	380	-45	-11%
Number of Unsheltered Families	236	127	148	114	119	5	4%
Number of Total Families	805	666	623	539	499	-40	-7%
Sheltered Chronically Homeless Individuals	120	164	202	226	342	116	51%
Unsheltered Chronically Homeless Individuals	1,539	1,424	1,327	1,366	1,185	-181	-13%
Total Chronically Homeless Individuals	1,659	1,588	1,529	1,592	1,527	-65	-4%
Sheltered Veterans	264	237	240	210	244	34	16%
Unsheltered Veterans	406	378	292	295	241	-54	-18%
Total Veterans	670	615	532	505	485	-20	-4%
Sheltered Unaccompanied Youth (up to 24)	82	56	50	73	89	16	22%
Unsheltered Unaccompanied Youth (up to 24)	227	263	139	149	210	61	41%
Total Unaccompanied Youth (up to 24)	309	319	189	222	299	77	35%

System Performance Measures Summary

	2016	2017	2018	2019	2020	2019-20 Change	% Change
Rate People Return to Homelessness in 6 Months	6.7%	9.2%	5.4%	7.7%	4.1%	-3.6%	N/A
Number of People who are Homeless for the First Time	5,182	5,783	5,047	4,648	3,965	-683	-14.7%
Rate People Exit from ES, SH, TH, and RRH to PH	56.1%	56.5%	58.7%	59.0%	54.9%	-4%	N/A
Rate People in PSH and OPH Retain or Exit to PH	94.4%	94.3%	94.2%	94.0%	95.7%	1.6%	N/A

Housing Inventory Count Summary

	2016	2017	2018	2019	2020	2019-20 Change	% Change
Emergency Shelter (ES)	1,714	1,693	1,838	1,757	2,055	298	17%
Safe Haven (SH)	25	25	35	44	42	-2	-5%
Transitional Housing (TH)	2,673	2,534	1,726	1,320	1,287	-33	-3%
Permanent Supportive Housing (PSH)	2,132	2,126	2,540	3,209	2,554	-655	-20%
Rapid Re-Housing (RRH)	163	1,219	1,869	1,344	1,190	-154	-11%

Award Summary

	2016	2017	2018	2019	2020	2019-20 Change	% Change
Continuum of Care (CoC)	\$11,519,682	\$11,762,496	\$12,096,595	\$12,917,169	\$12,936,104	\$18,935	0%
Emergency Solutions Grants (ESG)	\$1,095,307	\$2,374,995	\$1,086,925	\$1,131,253	\$1,159,207	\$27,954	2%
Youth Homelessness Demonstration Program (YHDP)	--	--	\$3,804,756	--	--	--	--