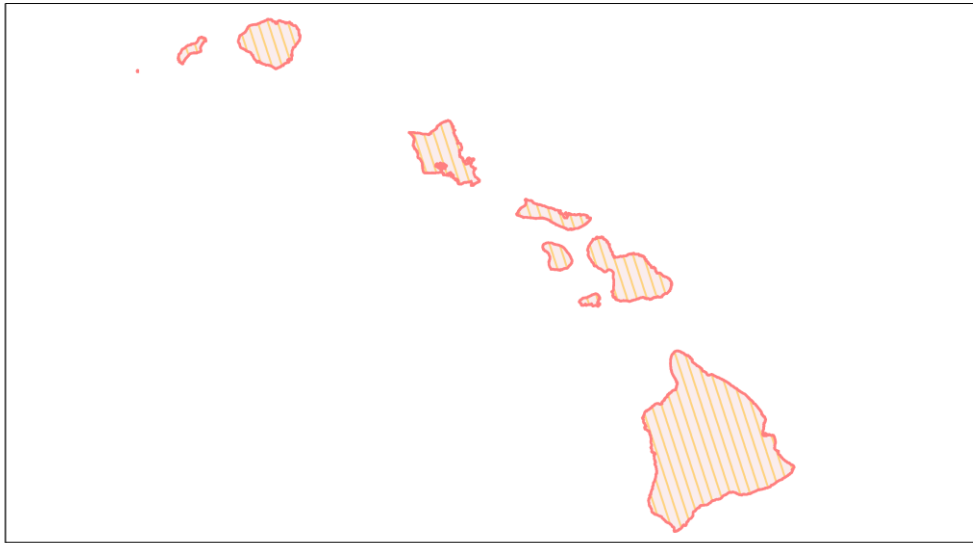
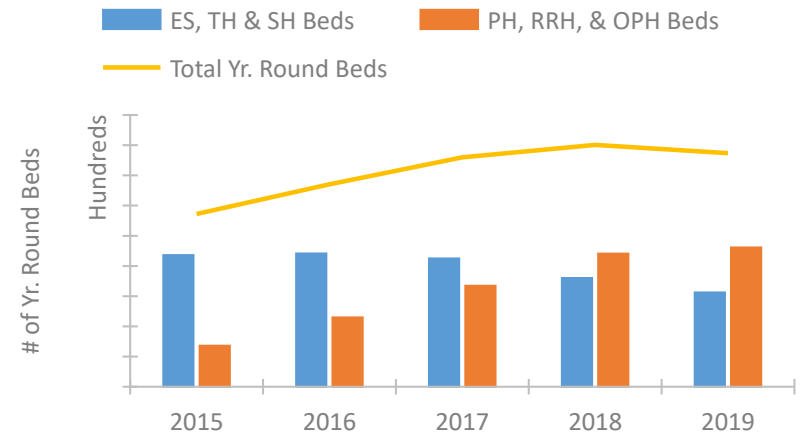


Hawaii Continuum of Care Performance Profile

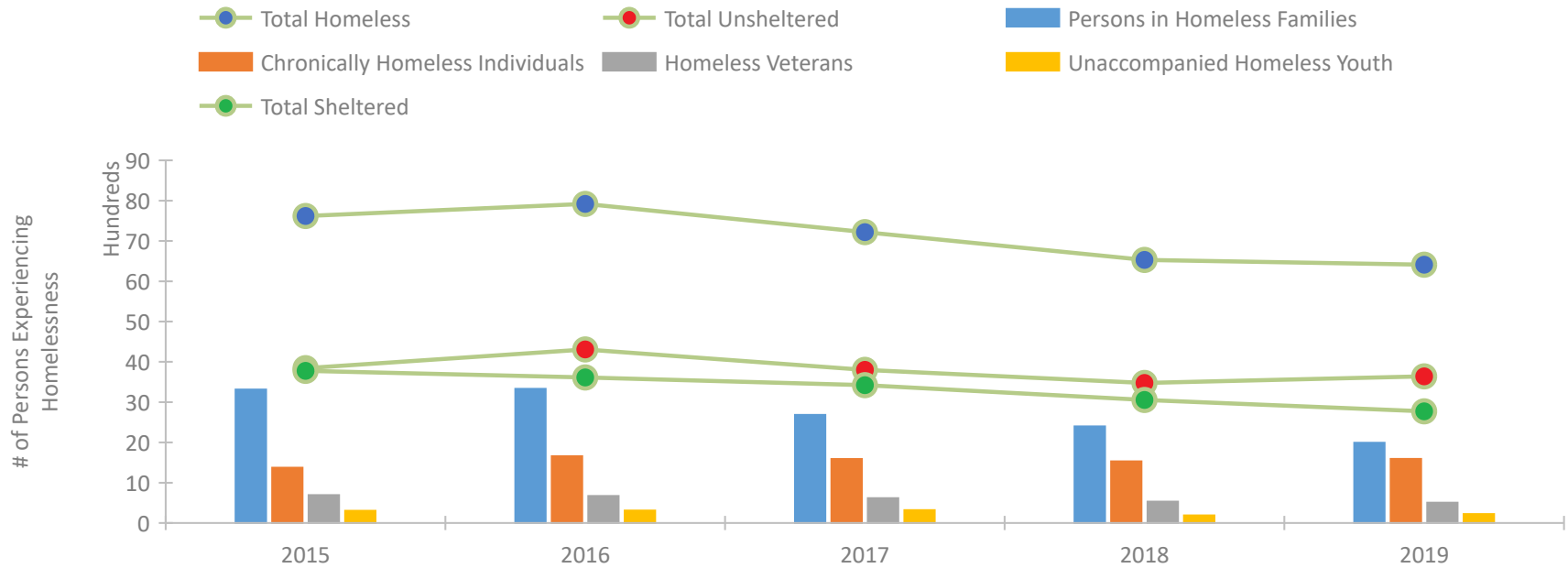


2019 CoC Boundaries 2018 CoC Boundaries

Housing Inventory Count by Program Type

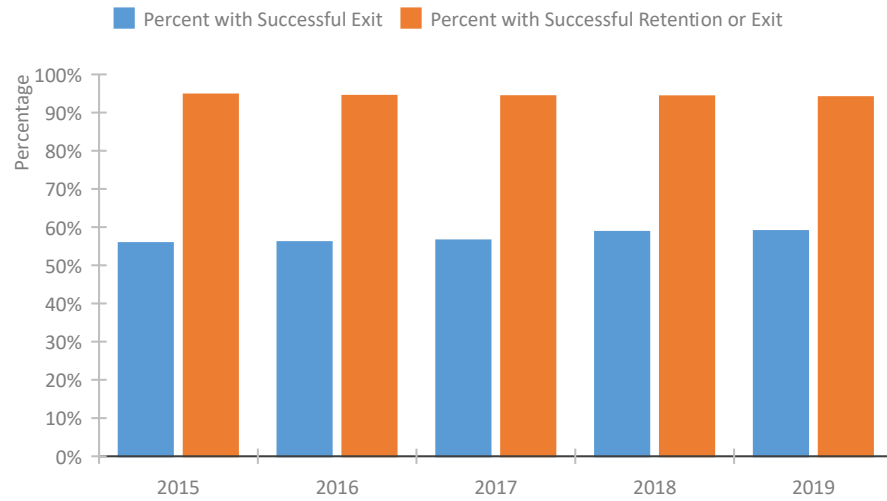


Homeless Population – Point-in-Time (PIT) Count

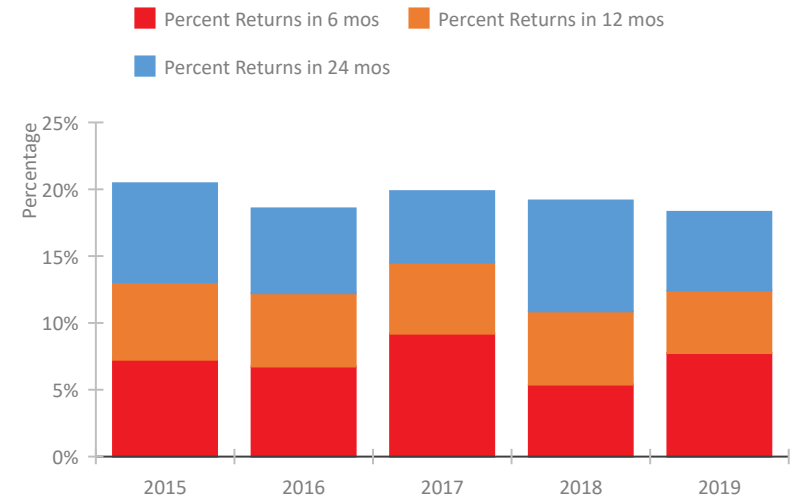


Hawaii Continuum of Care Performance Profile

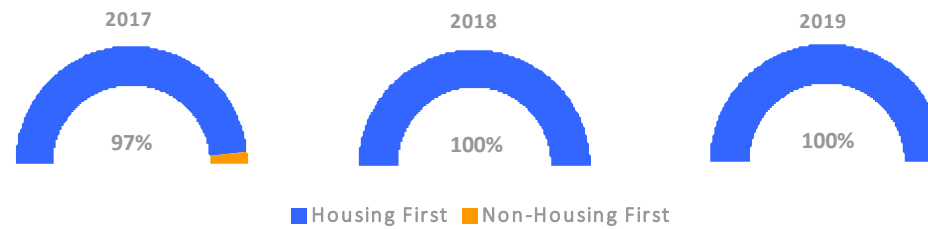
Exits to Permanent Housing by Program Type



Returns to Homelessness Over Time



Proportion of Housing First Projects by Year



Number of Projects by Year

	2017	2018	2019
Housing First Projects	29	33	26
Non-Housing First Projects	1	0	0

Data Summary: Hawaii

Point-In-Time Count Summary

	2015	2016	2017	2018	2019	2018-19 Change	% Change
Number of Sheltered Persons in Families	2,534	2,331	2,162	1,840	1,538	-302	-16%
Number of Unsheltered Persons in Families	779	1,000	523	559	454	-105	-19%
Number of Sheltered Individuals	1,243	1,282	1,258	1,215	1,234	19	2%
Number of Unsheltered Individuals	3,064	3,308	3,277	2,916	3,186	270	9%
Total Homeless Persons	7,620	7,921	7,220	6,530	6,412	-118	-2%
Number of Sheltered Families	613	569	539	475	425	-50	-11%
Number of Unsheltered Families	185	236	127	148	114	-34	-23%
Number of Total Families	798	805	666	623	539	-84	-13%
Sheltered Chronically Homeless Individuals	153	120	164	202	226	24	12%
Unsheltered Chronically Homeless Individuals	1,219	1,539	1,424	1,327	1,366	39	3%
Total Chronically Homeless Individuals	1,372	1,659	1,588	1,529	1,592	63	4%
Sheltered Veterans	275	264	237	240	210	-30	-12%
Unsheltered Veterans	417	406	378	292	295	3	1%
Total Veterans	692	670	615	532	505	-27	-5%
Sheltered Unaccompanied Youth (up to 24)	76	82	56	50	73	23	46%
Unsheltered Unaccompanied Youth (up to 24)	227	227	263	139	149	10	7%
Total Unaccompanied Youth (up to 24)	303	309	319	189	222	33	17%

System Performance Measures Summary

	2015	2016	2017	2018	2019	2018-19 Change	% Change
Rate People Return to Homelessness in 6 Months	7.3%	6.7%	9.2%	5.4%	7.7%	2.4%	N/A
Number of People who are Homeless for the First Time	5,524	5,182	5,783	5,047	4,648	-399	-7.9%
Rate People Exit from ES, SH, TH, and RRH to PH	55.8%	56.1%	56.5%	58.7%	59.0%	0.2%	N/A
Rate People in PSH and OPH Retain or Exit to PH	94.7%	94.4%	94.3%	94.2%	94.0%	-0.2%	N/A

Housing Inventory Count Summary

	2015	2016	2017	2018	2019	2018-19 Change	% Change
Emergency Shelter (ES)	1,404	1,714	1,693	1,838	1,757	-81	-4%
Safe Haven (SH)	25	25	25	35	44	9	26%
Transitional Housing (TH)	2,934	2,673	2,534	1,726	1,320	-406	-24%
Permanent Supportive Housing (PSH)	1,305	2,132	2,126	2,540	3,209	669	26%
Rapid Re-Housing (RRH)	54	163	1,219	1,869	1,344	-525	-28%
Other Permanent Housing (OPH)	--	--	--	--	60	--	--

Award Summary

	2015	2016	2017	2018	2019	2018-19 Change	% Change
Continuum of Care (CoC)	\$11,366,445	\$11,519,682	\$11,762,496	\$12,096,595	\$12,917,169	\$820,574	7%
Emergency Solutions Grants (ESG)	\$1,119,808	\$1,095,307	\$2,374,995	\$1,086,925	\$1,131,253	\$44,328	4%
Youth Homelessness Demonstration Program (YHDP)	N/A	--	--	\$3,804,756	--	--	--