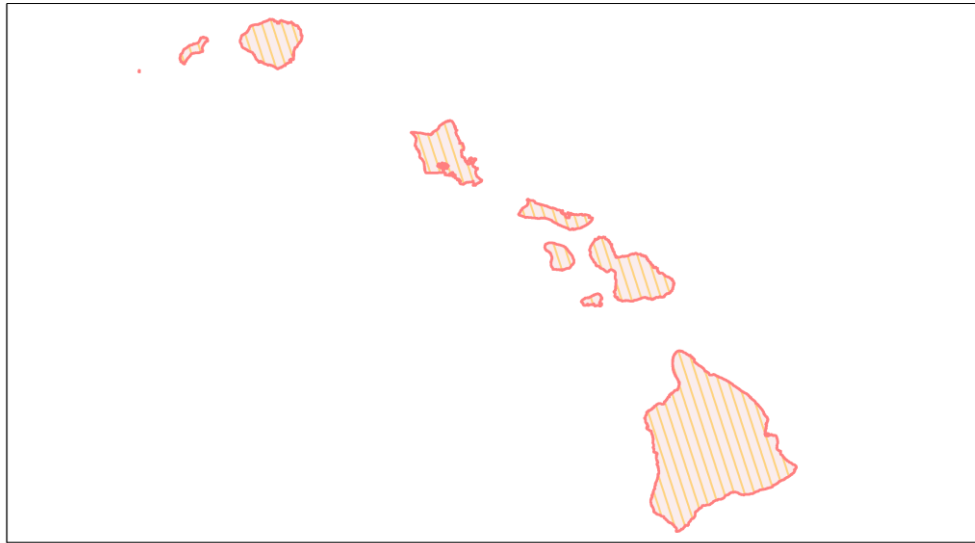
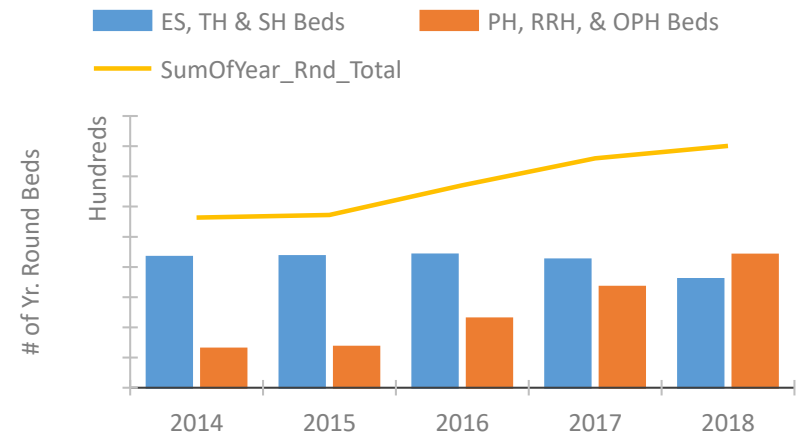


Hawaii Continuum of Care Performance Profile

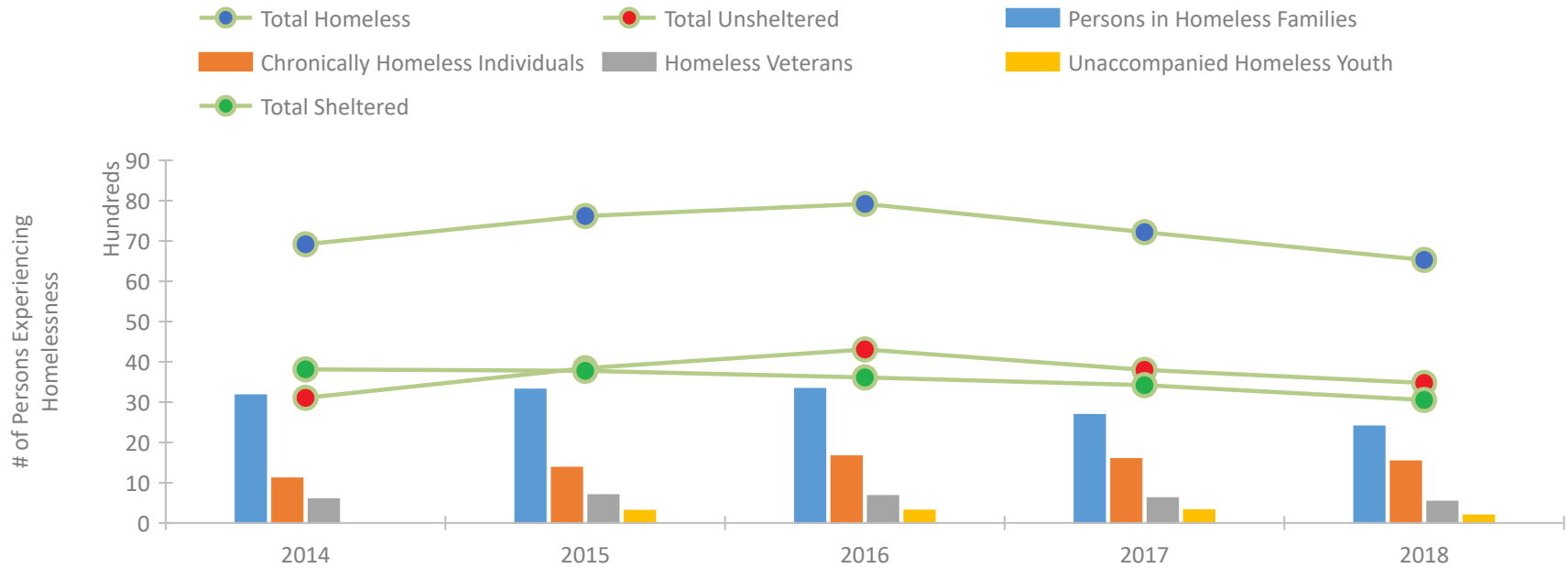


2018 CoC Boundaries 2017 CoC Boundaries

Housing Inventory Count by Program Type



Homeless Population – Point-in-Time (PIT) Count

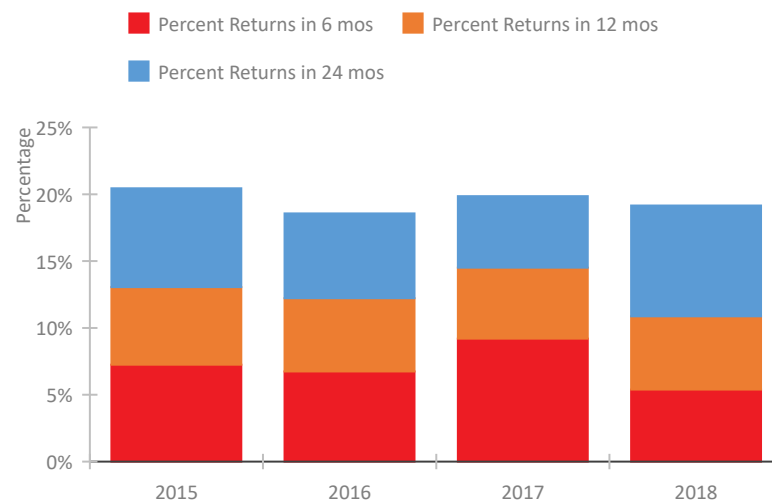


Hawaii Continuum of Care Performance Profile

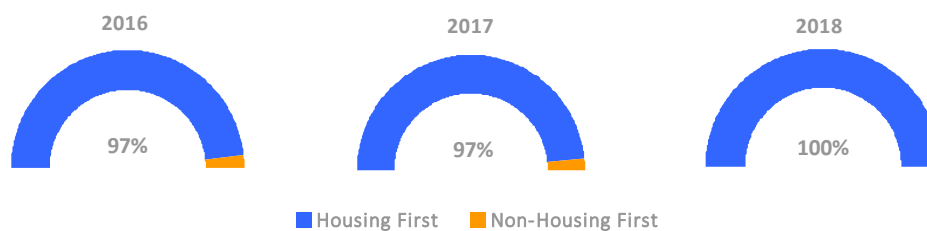
Exits to Permanent Housing by Program Type



Returns to Homelessness Over Time



Proportion of Housing First Projects by Year



Number of Projects by Year

	2016	2017	2018
Housing First Projects	31	29	33
Non-Housing First Projects	1	1	0

Data Summary: Hawaii

Point-In-Time Count Summary

	2014	2015	2016	2017	2018	2017-18 Change	% Change
Number of Sheltered Persons in Families	2,649	2,534	2,331	2,162	1,840	-322	-15%
Number of Unsheltered Persons in Families	519	779	1,000	523	559	36	7%
Number of Sheltered Individuals	1,157	1,235	1,276	1,256	1,214	-42	-3%
Number of Unsheltered Individuals	2,578	3,050	3,286	3,253	2,906	-347	-11%
Total Homeless Persons	6,903	7,598	7,893	7,194	6,519	-675	-9%
Number of Sheltered Families	663	613	569	539	475	-64	-12%
Number of Unsheltered Families	127	185	236	127	148	21	17%
Number of Total Families	790	798	805	666	623	-43	-6%
Sheltered Chronically Homeless Individuals	145	153	120	164	202	38	23%
Unsheltered Chronically Homeless Individuals	964	1,219	1,539	1,424	1,327	-97	-7%
Total Chronically Homeless Individuals	1,109	1,372	1,659	1,588	1,529	-59	-4%
Sheltered Veterans	247	275	264	237	240	3	1%
Unsheltered Veterans	346	417	406	378	292	-86	-23%
Total Veterans	593	692	670	615	532	-83	-13%
Sheltered Unaccompanied Youth (up to 24)	--	76	82	56	50	-6	-11%
Unsheltered Unaccompanied Youth (up to 24)	--	227	227	263	139	-124	-47%
Total Unaccompanied Youth (up to 24)	--	303	309	319	189	-130	-41%

System Performance Measures Summary

	2014	2015	2016	2017	2018	2017-18 Change	% Change
Rate People Return to Homelessness in 6 Months	N/A	7.3%	6.7%	9.2%	5.4%	-3.8%	N/A
Number of People who are Homeless for the First Time	N/A	5,524	5,182	5,783	5,047	-736	-12.7%
Rate People Exit from ES, SH, TH, and RRH to PH	N/A	55.8%	56.1%	56.5%	58.7%	2.2%	N/A
Rate People in PSH and OPH Retain or Exit to PH	N/A	94.7%	94.4%	94.3%	94.2%	0%	N/A

Housing Inventory Count Summary

	2014	2015	2016	2017	2018	2017-18 Change	% Change
Emergency Shelter (ES)	1,492	1,404	1,714	1,693	1,838	145	9%
Safe Haven (SH)	25	25	25	25	35	10	40%
Transitional Housing (TH)	2,819	2,934	2,673	2,534	1,726	-808	-32%
Permanent Supportive Housing (PSH)	1,220	1,305	2,132	2,126	2,540	414	19%
Rapid Re-Housing (RRH)	78	54	163	1,219	1,869	650	53%

Award Summary

	2014	2015	2016	2017	2018	2017-18 Change	% Change
Continuum of Care (CoC)	\$11,620,000	\$11,366,445	\$11,519,682	\$11,762,496	\$12,096,595	\$334,099	3%
Emergency Solutions Grants (ESG)	\$1,037,323	\$1,119,808	\$1,095,307	\$2,374,995	\$1,086,925	(\$1,288,070)	-54%
Youth Homelessness Demonstration Program (YHDP)	N/A	N/A	--	--	\$3,804,756	--	--