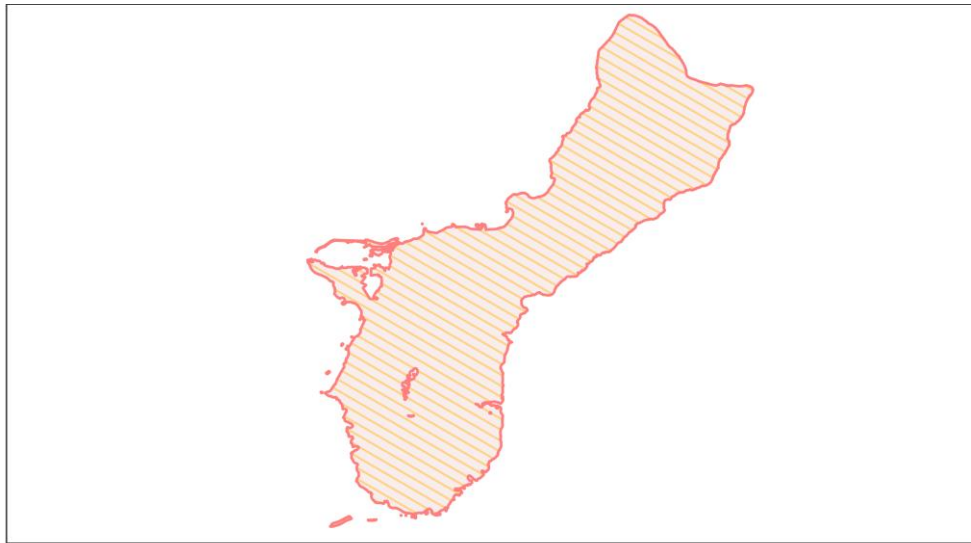
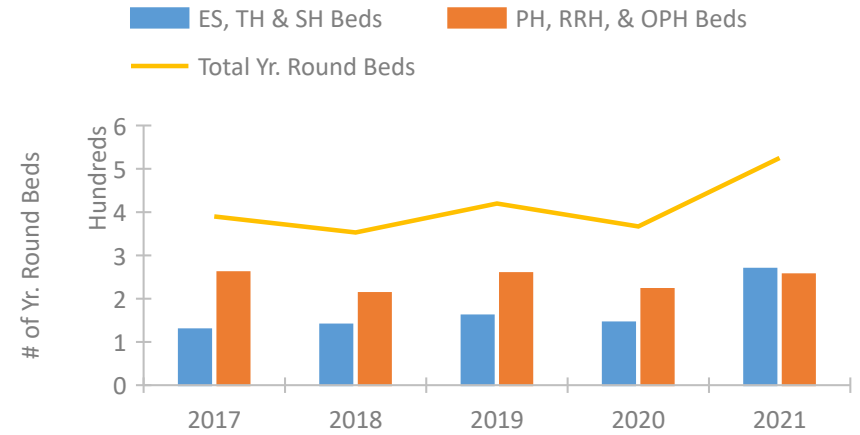


## Guam Continuum of Care Performance Profile

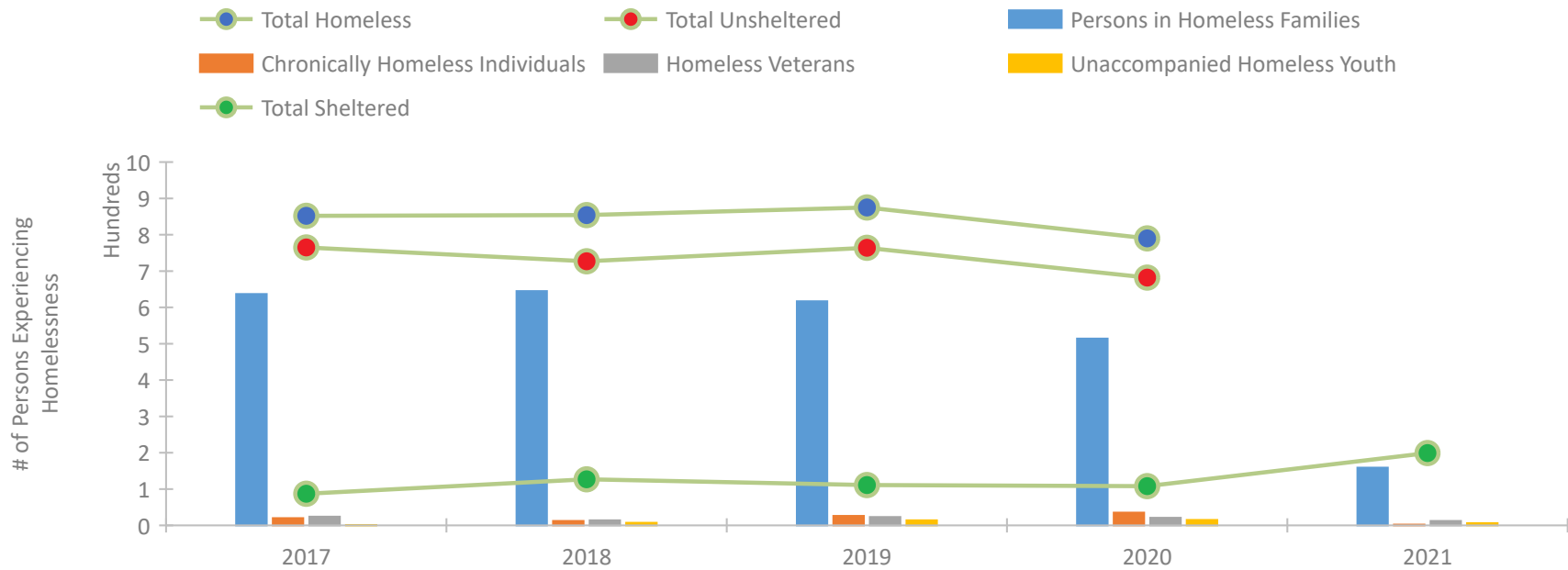


2021 CoC Boundaries 2020 CoC Boundaries

## Housing Inventory Count by Program Type



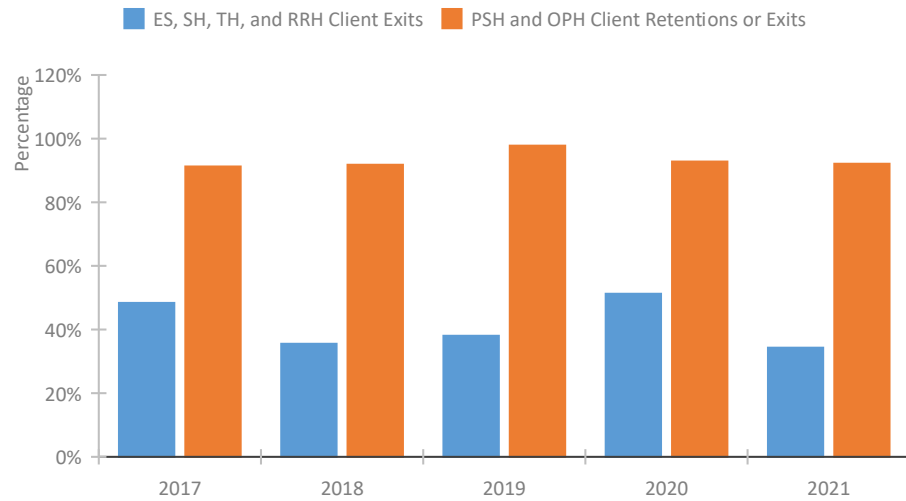
## Homeless Population – Point-in-Time (PIT) Count\*



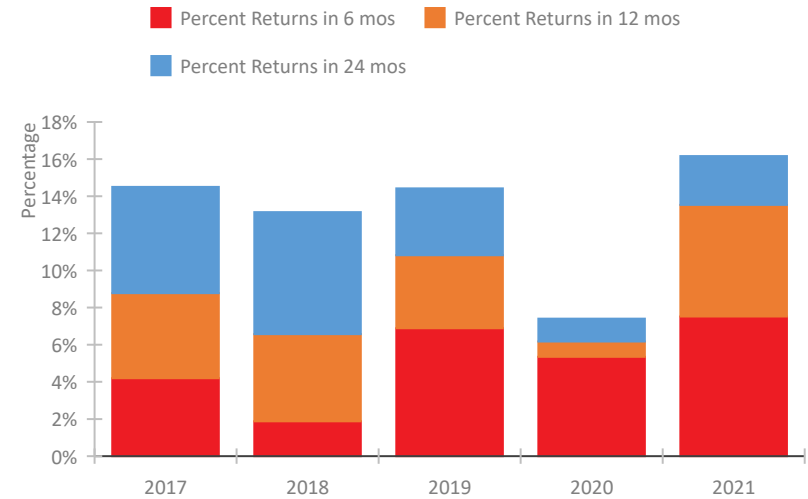
\*In 2021, HUD gave communities the option to cancel or modify the unsheltered survey portion of their counts based on the potential risk of COVID-19 transmission associated with conducting an in-person survey. As a result, HUD has excluded the unsheltered population sub-totals and all unsheltered sub-population data for this reporting period. The user is cautioned that the unsheltered and total homeless counts reported here may be missing data.

## Guam Continuum of Care Performance Profile

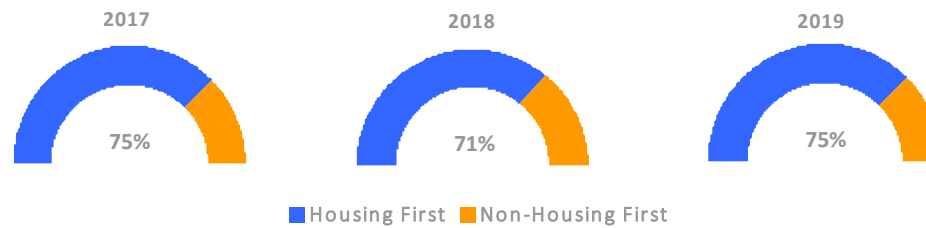
### Exits to Permanent Housing by Program Type



### Returns to Homelessness Over Time



### Proportion of Housing First Projects by Year†



### Number of Projects by Year

	2017	2018	2019
Housing First Projects	6	5	6
Non-Housing First Projects	2	2	2

†2021 Data unavailable at the time of report publication. In 2020 HUD awarded renewal projects noncompetitively, therefore no new data was collected and Housing First data remains the same from 2019 to 2020.

## Data Summary: Guam

### Point-In-Time Count Summary\*

	2017	2018	2019	2020	2021	2020-21 Change	% Change
Number of Sheltered Persons in Families	70	105	83	79	159	80	101%
Number of Unsheltered Persons in Families	567	540	534	435	0	-435	-100%
Number of Sheltered Individuals	17	22	28	29	40	11	38%
Number of Unsheltered Individuals	198	187	230	247	--	--	--
<b>Total Homeless Persons</b>	<b>852</b>	<b>854</b>	<b>875</b>	<b>790</b>	<b>199</b>	<b>-591</b>	<b>-75%</b>
Number of Sheltered Families	17	25	21	17	36	19	112%
Number of Unsheltered Families	100	95	91	75	--	--	--
<b>Number of Total Families</b>	<b>117</b>	<b>120</b>	<b>112</b>	<b>92</b>	<b>36</b>	<b>-56</b>	<b>-61%</b>
Sheltered Chronically Homeless Individuals	0	0	0	0	2	2	100%
Unsheltered Chronically Homeless Individuals	20	12	26	35	--	--	--
<b>Total Chronically Homeless Individuals</b>	<b>20</b>	<b>12</b>	<b>26</b>	<b>35</b>	<b>2</b>	<b>-33</b>	<b>-94%</b>
Sheltered Veterans	4	4	5	6	12	6	100%
Unsheltered Veterans	20	10	18	15	--	--	--
<b>Total Veterans</b>	<b>24</b>	<b>14</b>	<b>23</b>	<b>21</b>	<b>12</b>	<b>-9</b>	<b>-43%</b>
Sheltered Unaccompanied Youth (up to 24)	0	5	8	6	6	0	0%
Unsheltered Unaccompanied Youth (up to 24)	1	2	6	9	--	--	--
<b>Total Unaccompanied Youth (up to 24)</b>	<b>1</b>	<b>7</b>	<b>14</b>	<b>15</b>	<b>6</b>	<b>-9</b>	<b>-60%</b>

### System Performance Measures Summary

	2017	2018	2019	2020	2021	2020-21 Change	% Change
Rate People Return to Homelessness in 6 Months	4.2%	1.9%	6.9%	5.3%	7.5%	2.2%	N/A
Number of People who are Homeless for the First Time	496	594	455	306	510	204	66.7%
Rate People Exit from ES, SH, TH, and RRH to PH	48.3%	35.5%	38.0%	51.3%	34.3%	-16.9%	N/A
Rate People in PSH and OPH Retain or Exit to PH	91.2%	91.8%	97.8%	92.8%	92.1%	-0.6%	N/A

### Housing Inventory Count Summary

	2017	2018	2019	2020	2021	2020-21 Change	% Change
Emergency Shelter (ES)	129	134	155	131	258	127	97%
Transitional Housing (TH)	--	6	6	14	11	-3	-21%
Permanent Supportive Housing (PSH)	153	147	166	191	197	6	3%
Rapid Re-Housing (RRH)	108	66	90	28	56	28	100%
Other Permanent Housing (OPH)	--	--	3	3	3	0	0%

### Award Summary

	2017	2018	2019	2020	2021	2020-21 Change	% Change
<b>Continuum of Care (CoC)</b>	\$1,095,776	\$1,136,986	\$1,170,412	\$1,401,727	\$1,440,394	\$38,667	3%
<b>Emergency Solutions Grants (ESG)</b>	\$377,118	\$235,382	\$247,680	\$257,722	\$258,941	\$1,219	0%

\*In 2021, HUD gave communities the option to cancel or modify the unsheltered survey portion of their counts based on the potential risk of COVID-19 transmission associated with conducting an in-person survey. As a result, HUD has excluded the unsheltered population sub-totals and all unsheltered sub-population data for this reporting period. The user is cautioned that the unsheltered and total homeless counts reported here may be missing data.