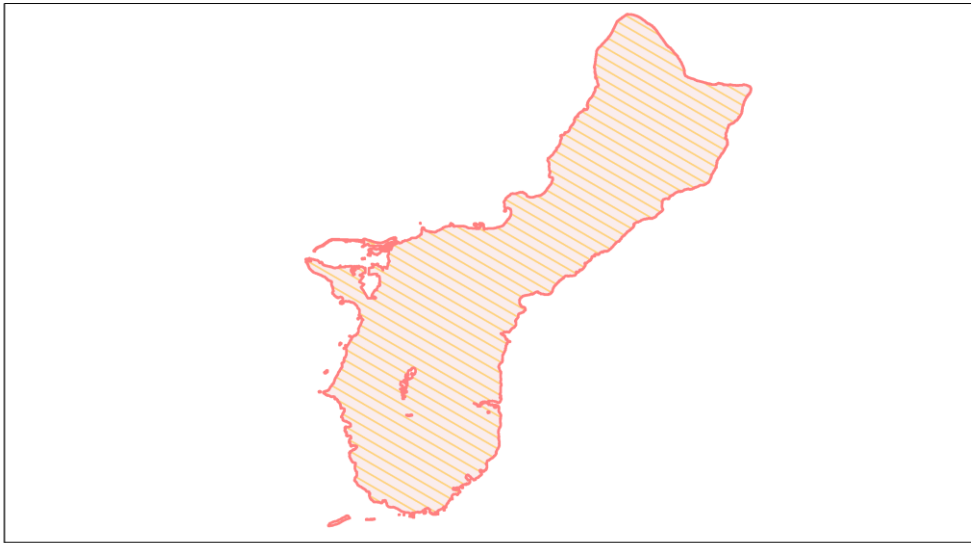
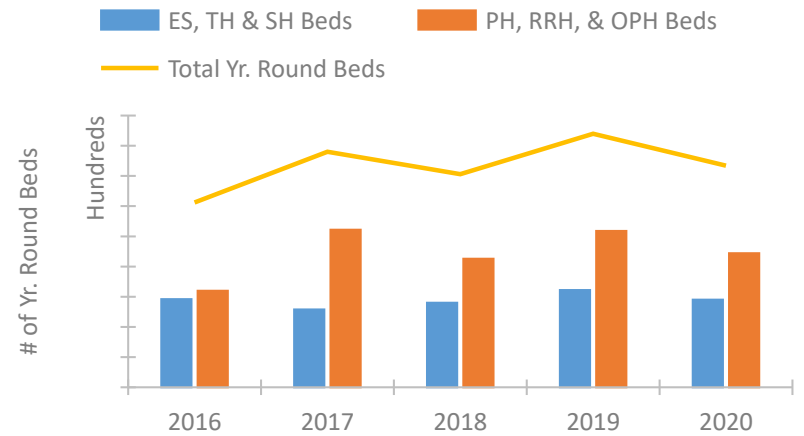


Guam Continuum of Care Performance Profile

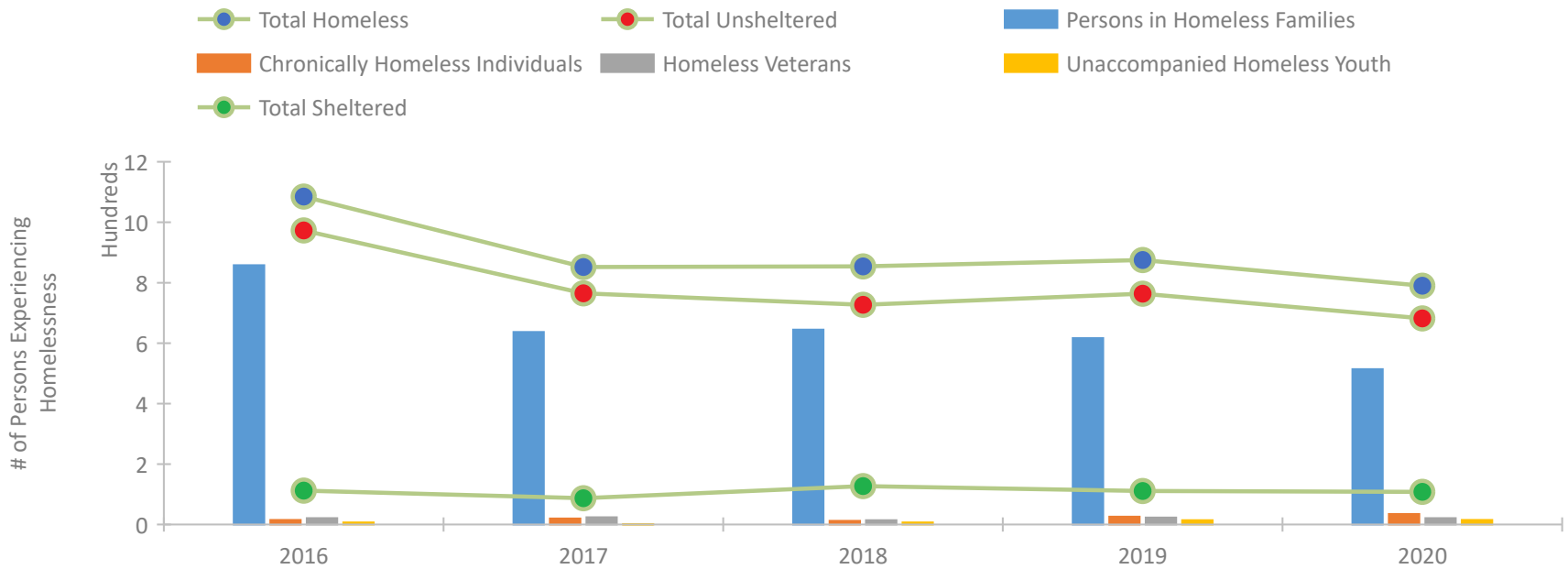


2020 CoC Boundaries 2019 CoC Boundaries

Housing Inventory Count by Program Type

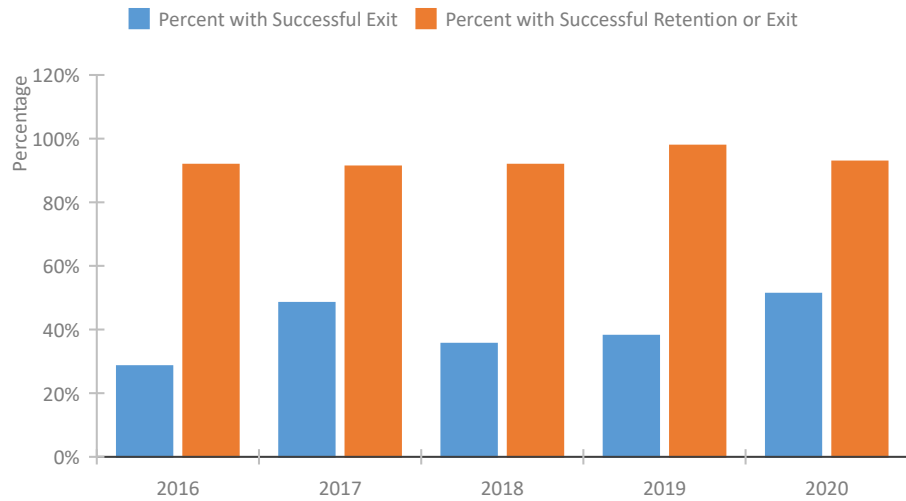


Homeless Population – Point-in-Time (PIT) Count

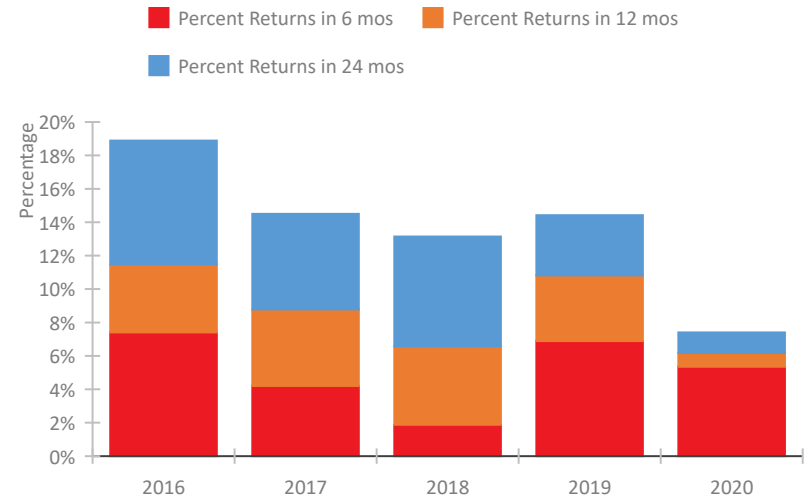


Guam Continuum of Care Performance Profile

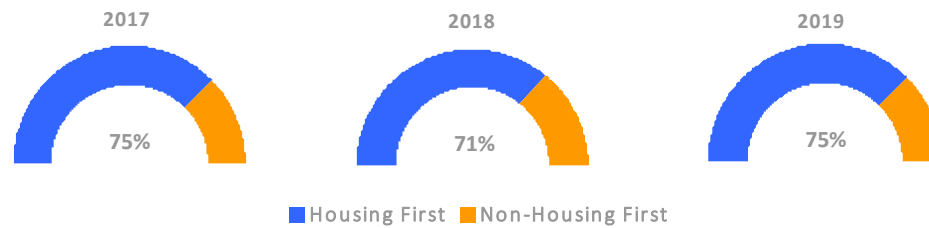
Exits to Permanent Housing by Program Type



Returns to Homelessness Over Time



Proportion of Housing First Projects by Year*



Number of Projects by Year			
	2017	2018	2019
Housing First Projects	6	5	6
Non-Housing First Projects	2	2	2

*In 2020 HUD awarded renewal projects noncompetitively, therefore no new data was collected and Housing First data remains the same from 2019 to 2020.

Data Summary: Guam

Point-In-Time Count Summary

	2016	2017	2018	2019	2020	2019-20 Change	% Change
Number of Sheltered Persons in Families	94	70	105	83	79	-4	-5%
Number of Unsheltered Persons in Families	764	567	540	534	435	-99	-19%
Number of Sheltered Individuals	18	17	22	28	29	1	4%
Number of Unsheltered Individuals	209	198	187	230	247	17	7%
Total Homeless Persons	1,085	852	854	875	790	-85	-10%
Number of Sheltered Families	23	17	25	21	17	-4	-19%
Number of Unsheltered Families	135	100	95	91	75	-16	-18%
Number of Total Families	158	117	120	112	92	-20	-18%
Sheltered Chronically Homeless Individuals	0	0	0	0	0	0	--
Unsheltered Chronically Homeless Individuals	15	20	12	26	35	9	35%
Total Chronically Homeless Individuals	15	20	12	26	35	9	35%
Sheltered Veterans	6	4	4	5	6	1	20%
Unsheltered Veterans	15	20	10	18	15	-3	-17%
Total Veterans	21	24	14	23	21	-2	-9%
Sheltered Unaccompanied Youth (up to 24)	4	0	5	8	6	-2	-25%
Unsheltered Unaccompanied Youth (up to 24)	3	1	2	6	9	3	50%
Total Unaccompanied Youth (up to 24)	7	1	7	14	15	1	7%

System Performance Measures Summary

	2016	2017	2018	2019	2020	2019-20 Change	% Change
Rate People Return to Homelessness in 6 Months	7.4%	4.2%	1.9%	6.9%	5.3%	-1.5%	N/A
Number of People who are Homeless for the First Time	525	496	594	455	306	-149	-32.7%
Rate People Exit from ES, SH, TH, and RRH to PH	28.5%	48.3%	35.5%	38.0%	51.3%	13.2%	N/A
Rate People in PSH and OPH Retain or Exit to PH	91.8%	91.2%	91.8%	97.8%	92.8%	-5%	N/A

Housing Inventory Count Summary

	2016	2017	2018	2019	2020	2019-20 Change	% Change
Emergency Shelter (ES)	125	129	134	155	131	-24	-15%
Transitional Housing (TH)	21	--	6	6	14	8	133%
Permanent Supportive Housing (PSH)	160	153	147	166	191	25	15%
Rapid Re-Housing (RRH)	--	108	66	90	28	-62	-69%
Other Permanent Housing (OPH)	--	--	--	3	3	0	-0%

Award Summary

	2016	2017	2018	2019	2020	2019-20 Change	% Change
Continuum of Care (CoC)	\$1,121,767	\$1,095,776	\$1,136,986	\$1,170,412	\$1,401,727	\$231,315	20%
Emergency Solutions Grants (ESG)	\$234,233	\$377,118	\$235,382	\$247,680	\$257,722	\$10,042	4%