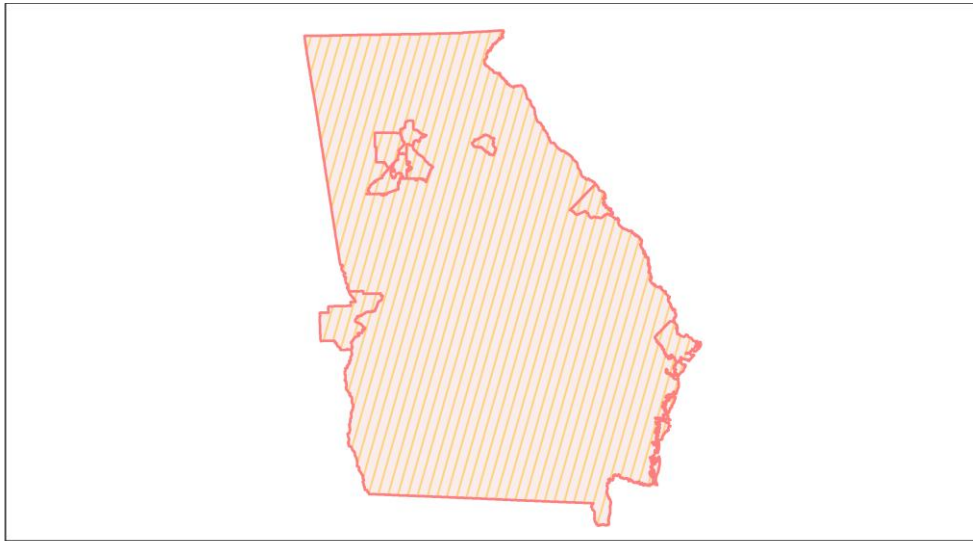
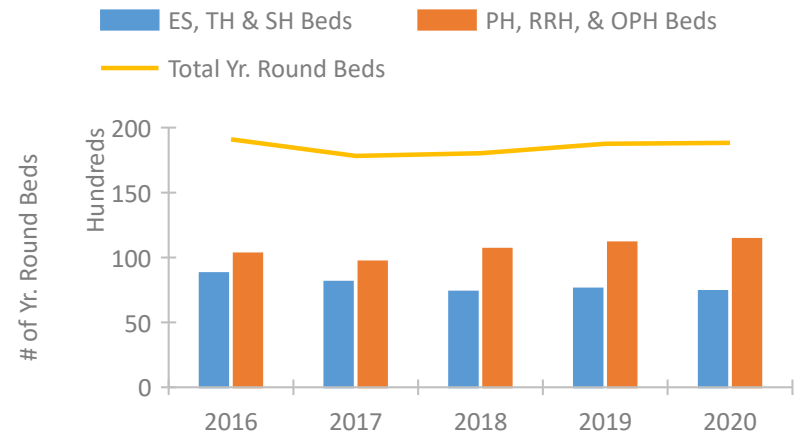


Georgia Continuum of Care Performance Profile

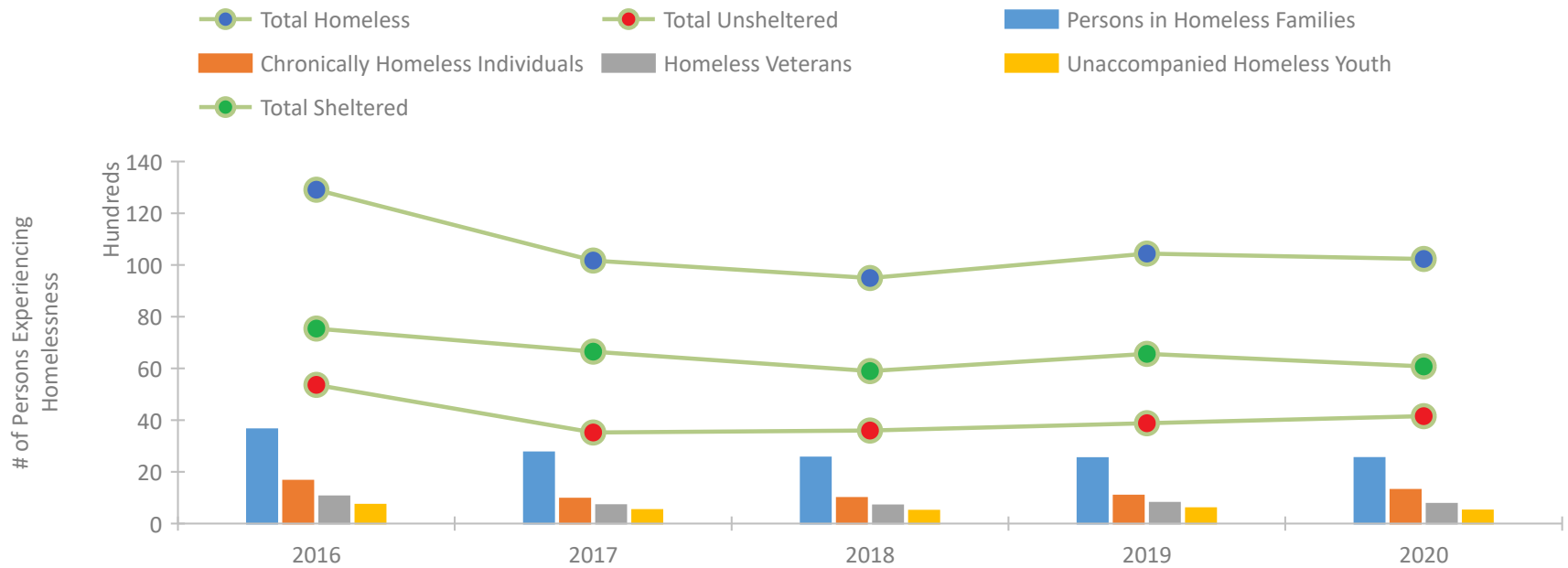


2020 CoC Boundaries 2019 CoC Boundaries

Housing Inventory Count by Program Type

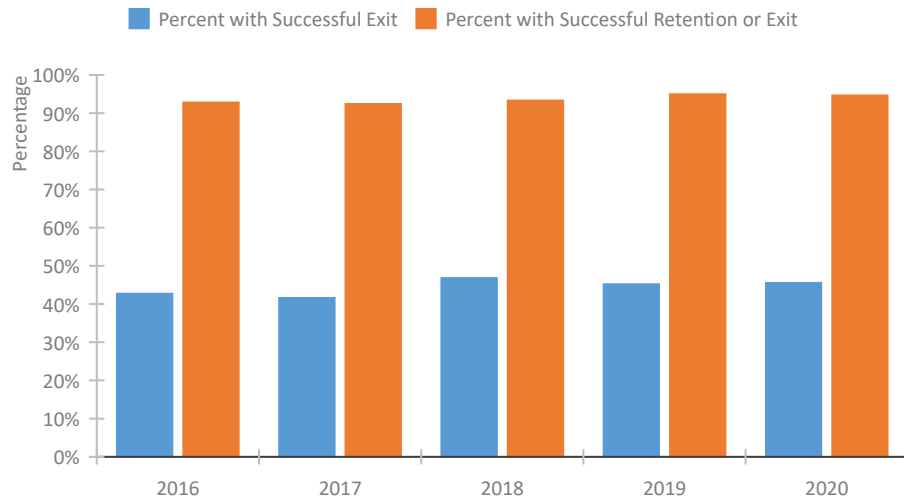


Homeless Population – Point-in-Time (PIT) Count

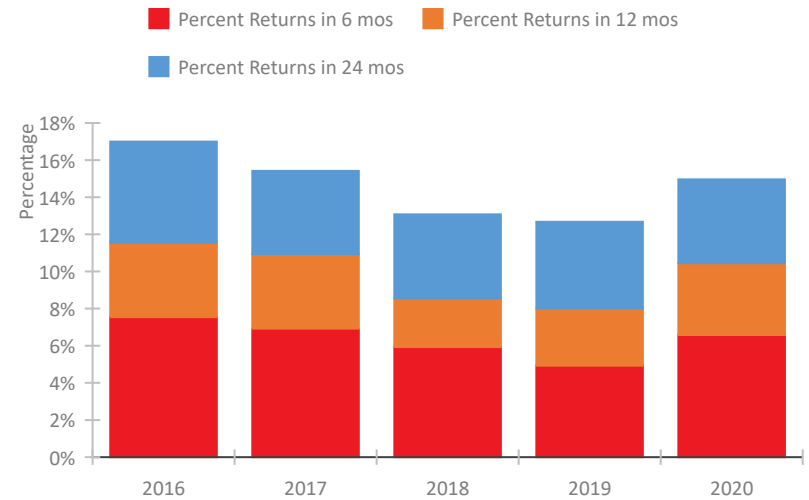


Georgia Continuum of Care Performance Profile

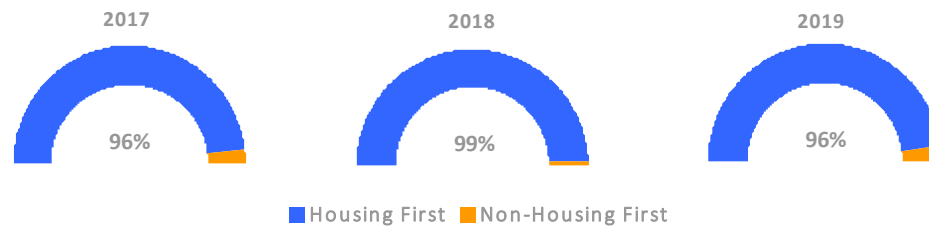
Exits to Permanent Housing by Program Type



Returns to Homelessness Over Time



Proportion of Housing First Projects by Year*



Number of Projects by Year			
	2017	2018	2019
Housing First Projects	257	183	159
Non-Housing First Projects	10	2	7

*In 2020 HUD awarded renewal projects noncompetitively, therefore no new data was collected and Housing First data remains the same from 2019 to 2020.

Data Summary: Georgia

Point-In-Time Count Summary

	2016	2017	2018	2019	2020	2019-20 Change	% Change
Number of Sheltered Persons in Families	2,758	2,549	2,343	2,394	2,393	-1	-0%
Number of Unsheltered Persons in Families	886	203	213	136	145	9	7%
Number of Sheltered Individuals	4,785	4,102	3,557	4,169	3,685	-484	-12%
Number of Unsheltered Individuals	4,480	3,320	3,386	3,744	4,011	267	7%
Total Homeless Persons	12,909	10,174	9,499	10,443	10,234	-209	-2%
Number of Sheltered Families	920	939	725	766	812	46	6%
Number of Unsheltered Families	225	80	87	49	52	3	6%
Number of Total Families	1,145	1,019	812	815	864	49	6%
Sheltered Chronically Homeless Individuals	415	405	238	429	422	-7	-2%
Unsheltered Chronically Homeless Individuals	1,243	558	754	652	883	231	35%
Total Chronically Homeless Individuals	1,658	963	992	1,081	1,305	224	21%
Sheltered Veterans	581	466	429	448	376	-72	-16%
Unsheltered Veterans	474	246	276	353	388	35	10%
Total Veterans	1,055	712	705	801	764	-37	-5%
Sheltered Unaccompanied Youth (up to 24)	475	328	297	357	263	-94	-26%
Unsheltered Unaccompanied Youth (up to 24)	250	198	197	239	241	2	1%
Total Unaccompanied Youth (up to 24)	725	526	494	596	504	-92	-15%

System Performance Measures Summary

	2016	2017	2018	2019	2020	2019-20 Change	% Change
Rate People Return to Homelessness in 6 Months	7.5%	6.9%	5.9%	4.9%	6.6%	1.7%	N/A
Number of People who are Homeless for the First Time	20,992	19,226	22,109	21,392	16,194	-5,198	-24.3%
Rate People Exit from ES, SH, TH, and RRH to PH	42.7%	41.6%	46.8%	45.2%	45.5%	0.4%	N/A
Rate People in PSH and OPH Retain or Exit to PH	92.8%	92.4%	93.3%	94.9%	94.6%	-0.3%	N/A

Housing Inventory Count Summary

	2016	2017	2018	2019	2020	2019-20 Change	% Change
Emergency Shelter (ES)	4,362	4,593	4,117	4,702	4,554	-148	-3%
Transitional Housing (TH)	4,430	3,534	3,246	2,898	2,859	-39	-1%
Permanent Supportive Housing (PSH)	8,784	8,271	8,327	8,099	8,218	119	1%
Rapid Re-Housing (RRH)	1,447	1,379	2,319	2,809	2,955	146	5%
Other Permanent Housing (OPH)	28	43	19	254	250	-4	-2%

Award Summary

	2016	2017	2018	2019	2020	2019-20 Change	% Change
Continuum of Care (CoC)	\$38,648,979	\$41,032,810	\$43,070,968	\$43,435,326	\$46,499,575	\$3,064,249	7%
Emergency Solutions Grants (ESG)	\$6,829,633	\$8,704,914	\$6,874,087	\$7,141,865	\$7,377,086	\$235,221	3%
Youth Homelessness Demonstration Program (YHDP)	--	--	--	--	\$2,253,686	--	--