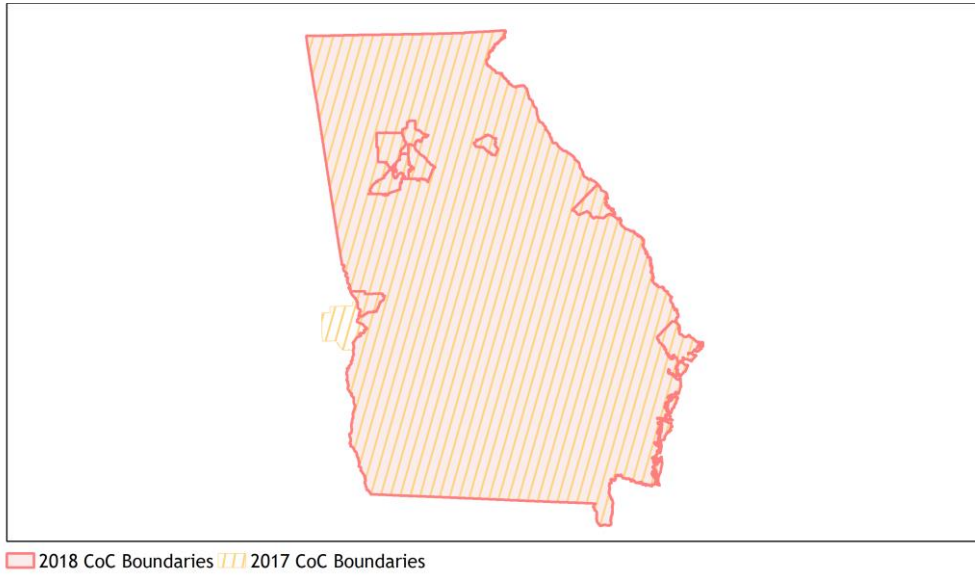
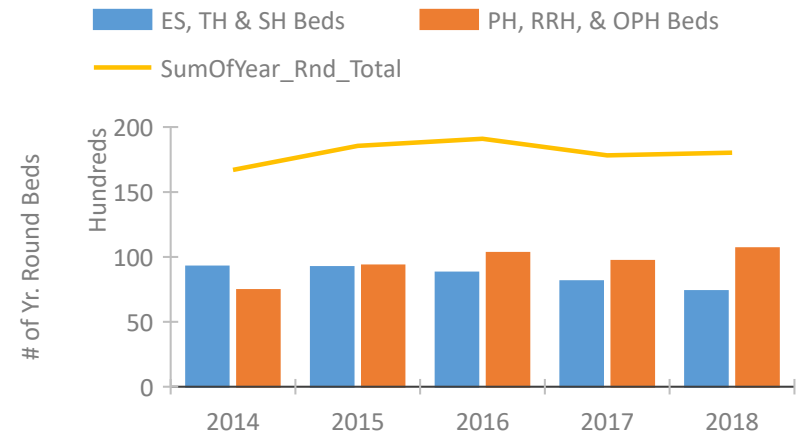


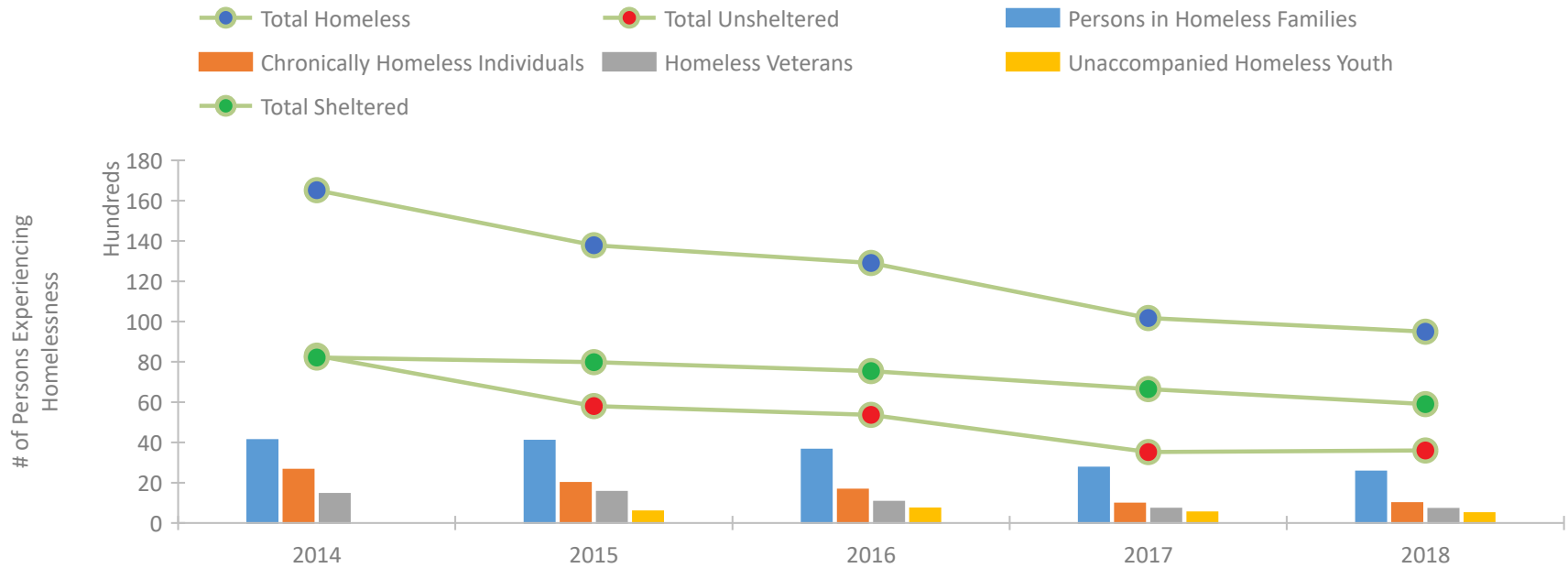
Georgia Continuum of Care Performance Profile



Housing Inventory Count by Program Type



Homeless Population – Point-in-Time (PIT) Count

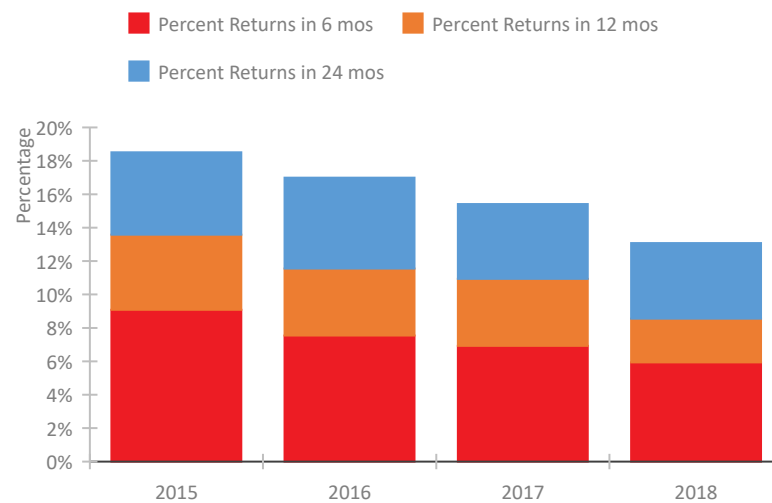


Georgia Continuum of Care Performance Profile

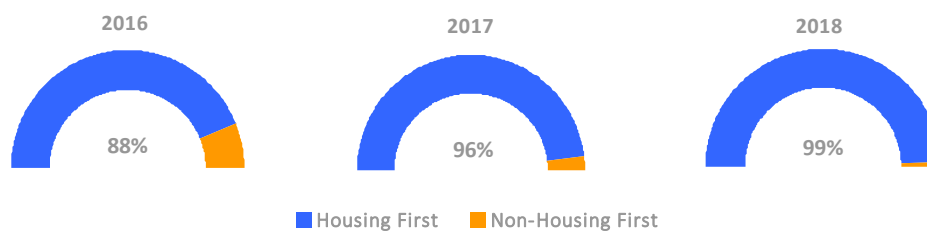
Exits to Permanent Housing by Program Type



Returns to Homelessness Over Time



Proportion of Housing First Projects by Year



Number of Projects by Year

	2016	2017	2018
Housing First Projects	143	257	183
Non-Housing First Projects	20	10	2

Data Summary: Georgia

Point-In-Time Count Summary

	2014	2015	2016	2017	2018	2017-18 Change	% Change
Number of Sheltered Persons in Families	3,282	3,204	2,758	2,549	2,343	-206	-8%
Number of Unsheltered Persons in Families	836	884	886	203	213	10	5%
Number of Sheltered Individuals	4,922	4,778	4,772	4,078	3,531	-547	-13%
Number of Unsheltered Individuals	7,387	4,915	4,476	3,316	3,383	67	2%
Total Homeless Persons	16,427	13,781	12,892	10,146	9,470	-676	-7%
Number of Sheltered Families	1,023	1,014	920	939	725	-214	-23%
Number of Unsheltered Families	268	222	225	80	87	7	9%
Number of Total Families	1,291	1,236	1,145	1,019	812	-207	-20%
Sheltered Chronically Homeless Individuals	862	568	415	405	238	-167	-41%
Unsheltered Chronically Homeless Individuals	1,783	1,426	1,243	558	754	196	35%
Total Chronically Homeless Individuals	2,645	1,994	1,658	963	992	29	3%
Sheltered Veterans	647	866	581	466	429	-37	-8%
Unsheltered Veterans	796	682	474	246	276	30	12%
Total Veterans	1,443	1,548	1,055	712	705	-7	-1%
Sheltered Unaccompanied Youth (up to 24)	--	292	475	328	297	-31	-9%
Unsheltered Unaccompanied Youth (up to 24)	--	283	250	198	197	-1	-1%
Total Unaccompanied Youth (up to 24)	--	575	725	526	494	-32	-6%

System Performance Measures Summary

	2014	2015	2016	2017	2018	2017-18 Change	% Change
Rate People Return to Homelessness in 6 Months	N/A	9.1%	7.5%	6.9%	5.9%	-1%	N/A
Number of People who are Homeless for the First Time	N/A	21,193	20,992	19,226	22,109	2,883	15%
Rate People Exit from ES, SH, TH, and RRH to PH	N/A	38.8%	42.7%	41.6%	46.8%	5.2%	N/A
Rate People in PSH and OPH Retain or Exit to PH	N/A	91.9%	92.8%	92.4%	93.3%	0.9%	N/A

Housing Inventory Count Summary

	2014	2015	2016	2017	2018	2017-18 Change	% Change
Emergency Shelter (ES)	4,765	4,416	4,362	4,593	4,117	-476	-10%
Transitional Housing (TH)	4,491	4,803	4,430	3,534	3,246	-288	-8%
Permanent Supportive Housing (PSH)	6,923	8,319	8,784	8,271	8,327	56	1%
Rapid Re-Housing (RRH)	521	948	1,447	1,379	2,319	940	68%
Other Permanent Housing (OPH)	--	28	28	43	19	-24	-56%

Award Summary

	2014	2015	2016	2017	2018	2017-18 Change	% Change
Continuum of Care (CoC)	\$37,071,955	\$38,638,644	\$38,648,979	\$41,032,810	\$43,070,968	\$2,038,158	5%
Emergency Solutions Grants (ESG)	\$6,177,815	\$6,778,142	\$6,829,633	\$8,704,914	\$6,874,087	(\$1,830,827)	-21%