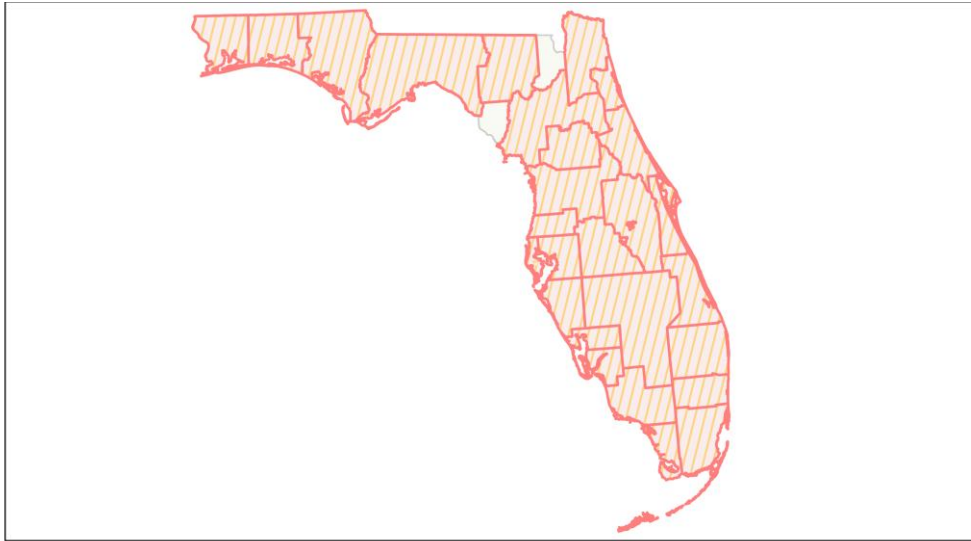
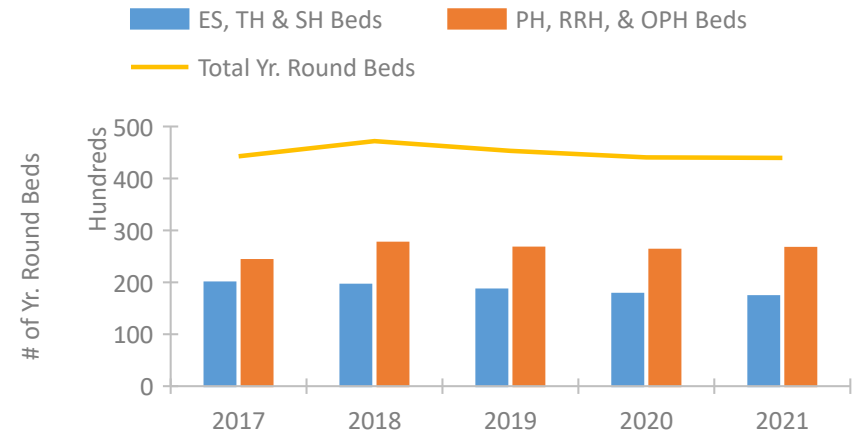


## Florida Continuum of Care Performance Profile

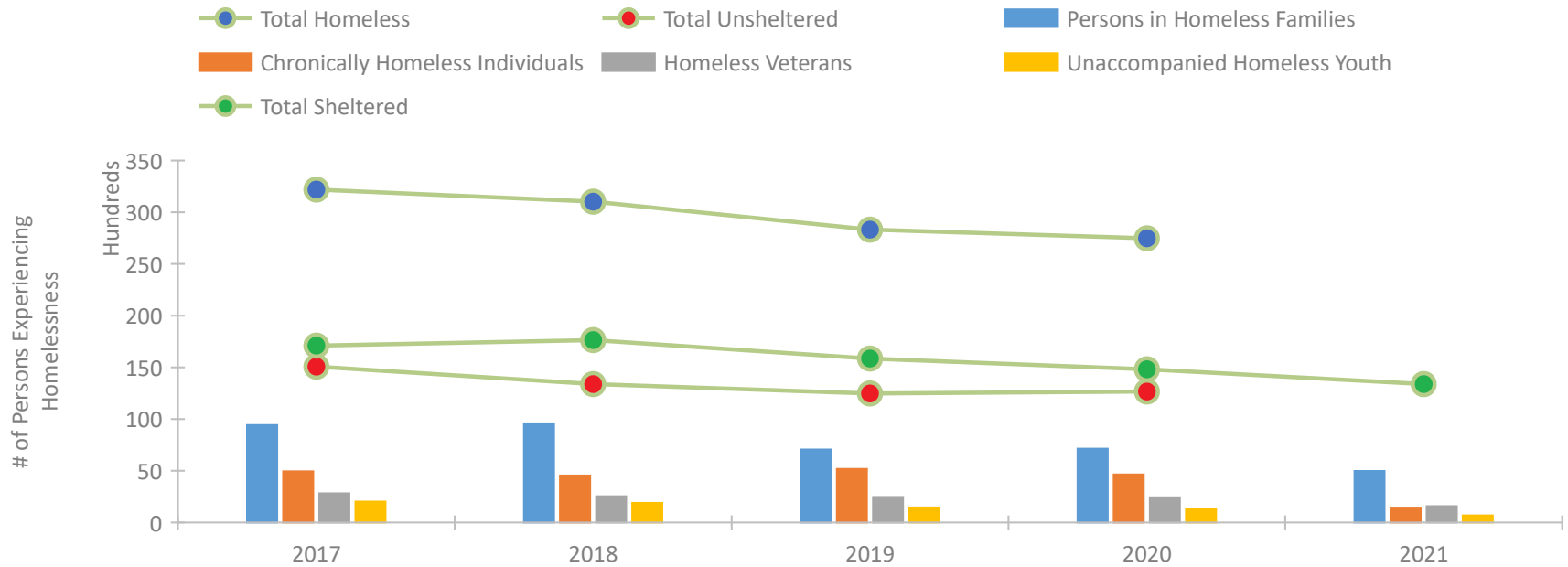


2021 CoC Boundaries 2020 CoC Boundaries

### Housing Inventory Count by Program Type



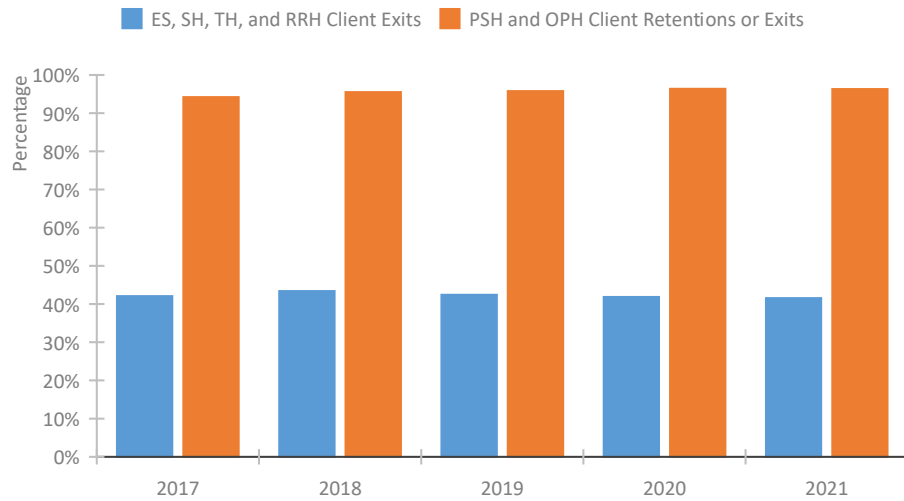
### Homeless Population – Point-in-Time (PIT) Count\*



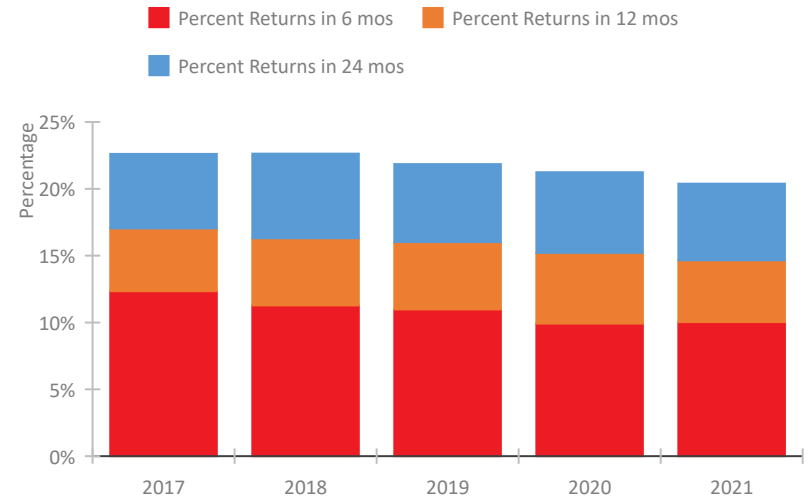
\*In 2021, HUD gave communities the option to cancel or modify the unsheltered survey portion of their counts based on the potential risk of COVID-19 transmission associated with conducting an in-person survey. As a result, HUD has excluded the unsheltered population sub-totals and all unsheltered sub-population data for this reporting period. The user is cautioned that the unsheltered and total homeless counts reported here may be missing data.

## Florida Continuum of Care Performance Profile

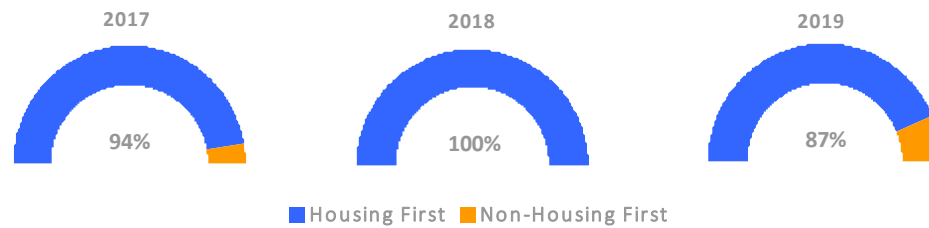
### Exits to Permanent Housing by Program Type



### Returns to Homelessness Over Time



### Proportion of Housing First Projects by Year†



Number of Projects by Year			
	2017	2018	2019
Housing First Projects	370	308	242
Non-Housing First Projects	22	0	35

†2021 Data unavailable at the time of report publication. In 2020 HUD awarded renewal projects noncompetitively, therefore no new data was collected and Housing First data remains the same from 2019 to 2020.

## Data Summary: Florida

### Point-In-Time Count Summary\*

	2017	2018	2019	2020	2021	2020-21 Change	% Change
Number of Sheltered Persons in Families	6,180	6,951	5,899	5,933	4,981	-952	-16%
Number of Unsheltered Persons in Families	3,242	2,636	1,164	1,210	0	-1,210	-100%
Number of Sheltered Individuals	10,931	10,686	9,953	8,882	8,412	-470	-5%
Number of Unsheltered Individuals	11,837	10,757	11,312	11,462	--	--	--
<b>Total Homeless Persons</b>	<b>32,190</b>	<b>31,030</b>	<b>28,328</b>	<b>27,487</b>	<b>13,393</b>	<b>-14,094</b>	<b>-51%</b>
Number of Sheltered Families	1,924	2,070	1,801	1,932	1,579	-353	-18%
Number of Unsheltered Families	922	687	370	362	--	--	--
<b>Number of Total Families</b>	<b>2,846</b>	<b>2,757</b>	<b>2,171</b>	<b>2,294</b>	<b>1,579</b>	<b>-715</b>	<b>-31%</b>
Sheltered Chronically Homeless Individuals	1,127	1,237	1,456	1,455	1,446	-9	-1%
Unsheltered Chronically Homeless Individuals	3,824	3,306	3,725	3,195	--	--	--
<b>Total Chronically Homeless Individuals</b>	<b>4,951</b>	<b>4,543</b>	<b>5,181</b>	<b>4,650</b>	<b>1,446</b>	<b>-3,204</b>	<b>-69%</b>
Sheltered Veterans	1,821	1,582	1,576	1,470	1,583	113	8%
Unsheltered Veterans	996	961	896	966	--	--	--
<b>Total Veterans</b>	<b>2,817</b>	<b>2,543</b>	<b>2,472</b>	<b>2,436</b>	<b>1,583</b>	<b>-853</b>	<b>-35%</b>
Sheltered Unaccompanied Youth (up to 24)	1,075	1,020	905	803	686	-117	-15%
Unsheltered Unaccompanied Youth (up to 24)	944	872	545	528	--	--	--
<b>Total Unaccompanied Youth (up to 24)</b>	<b>2,019</b>	<b>1,892</b>	<b>1,450</b>	<b>1,331</b>	<b>686</b>	<b>-645</b>	<b>-48%</b>

### System Performance Measures Summary

	2017	2018	2019	2020	2021	2020-21 Change	% Change
Rate People Return to Homelessness in 6 Months	12.3%	11.3%	11.0%	9.9%	10.0%	0.1%	N/A
Number of People who are Homeless for the First Time	49,913	47,122	43,678	36,188	41,287	5,099	14.1%
Rate People Exit from ES, SH, TH, and RRH to PH	42.1%	43.4%	42.4%	41.9%	41.5%	-0.3%	N/A
Rate People in PSH and OPH Retain or Exit to PH	94.2%	95.5%	95.8%	96.4%	96.3%	-0.1%	N/A

### Housing Inventory Count Summary

	2017	2018	2019	2020	2021	2020-21 Change	% Change
Emergency Shelter (ES)	11,493	12,424	11,595	11,462	11,592	130	1%
Safe Haven (SH)	123	182	217	218	171	-47	-22%
Transitional Housing (TH)	8,366	6,948	6,805	6,113	5,568	-545	-9%
Permanent Supportive Housing (PSH)	17,817	18,628	18,547	17,841	17,392	-449	-3%
Rapid Re-Housing (RRH)	4,945	7,097	6,161	6,630	7,522	892	13%
Other Permanent Housing (OPH)	1,539	1,925	1,993	1,814	1,716	-98	-5%

### Award Summary

	2017	2018	2019	2020	2021	2020-21 Change	% Change
<b>Continuum of Care (CoC)</b>	\$84,273,839	\$85,425,367	\$92,839,896	\$98,991,639	\$114,053,992	\$15,062,353	15%
<b>Emergency Solutions Grants (ESG)</b>	\$16,834,251	\$12,005,522	\$12,613,662	\$13,160,509	\$13,286,466	\$125,957	1%
<b>Youth Homelessness Demonstration Program (YHDP)</b>	--	\$4,932,359	--	\$1,130,108	\$8,377,776	\$7,247,668	641%

\*In 2021, HUD gave communities the option to cancel or modify the unsheltered survey portion of their counts based on the potential risk of COVID-19 transmission associated with conducting an in-person survey. As a result, HUD has excluded the unsheltered population sub-totals and all unsheltered sub-population data for this reporting period. The user is cautioned that the unsheltered and total homeless counts reported here may be missing data.