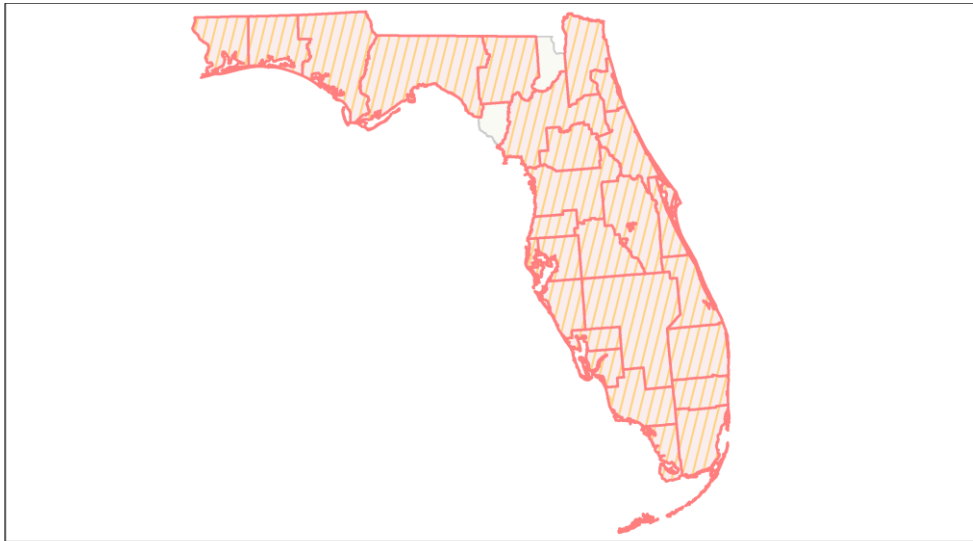
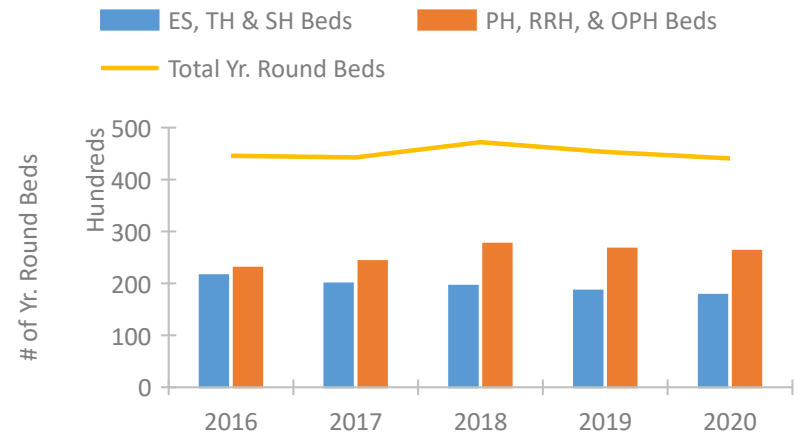


Florida Continuum of Care Performance Profile

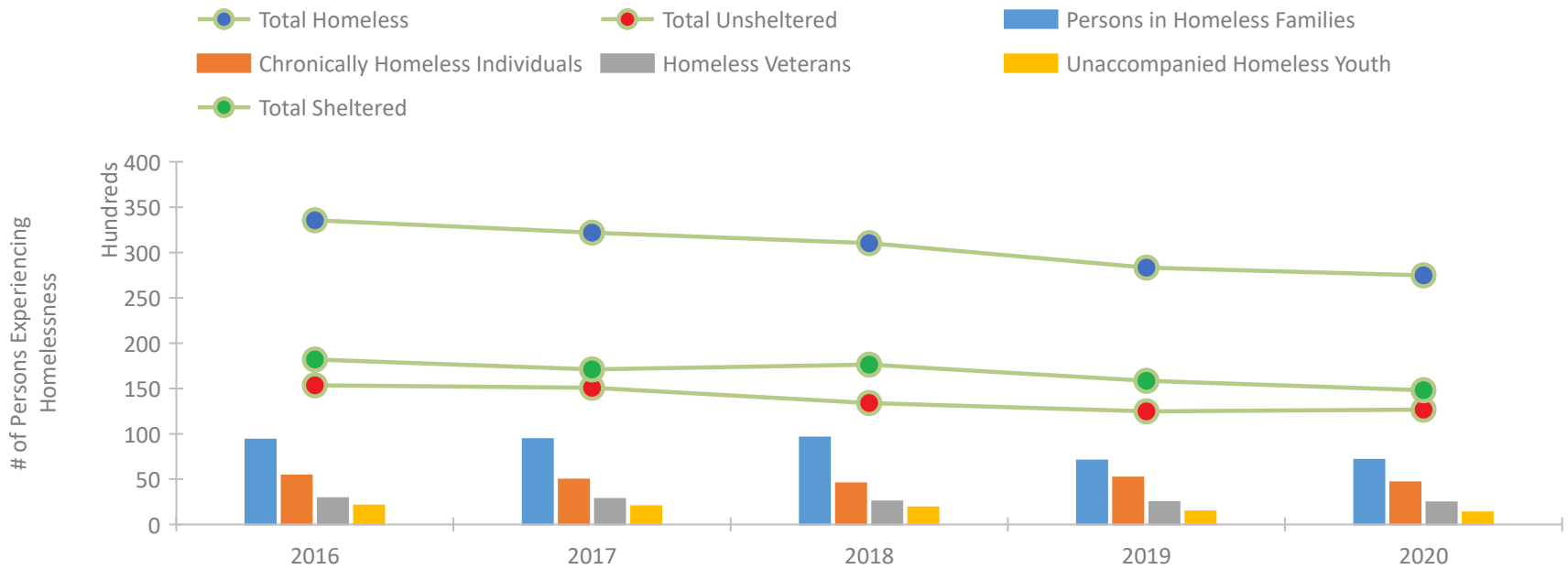


2020 CoC Boundaries 2019 CoC Boundaries

Housing Inventory Count by Program Type



Homeless Population – Point-in-Time (PIT) Count

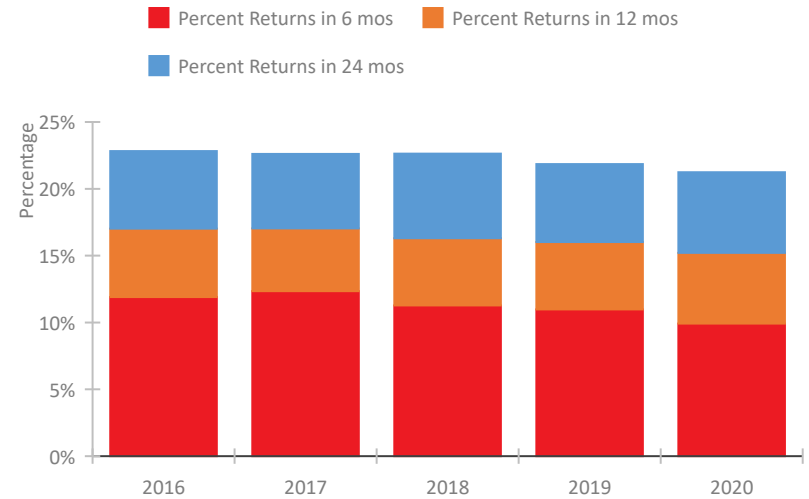


Florida Continuum of Care Performance Profile

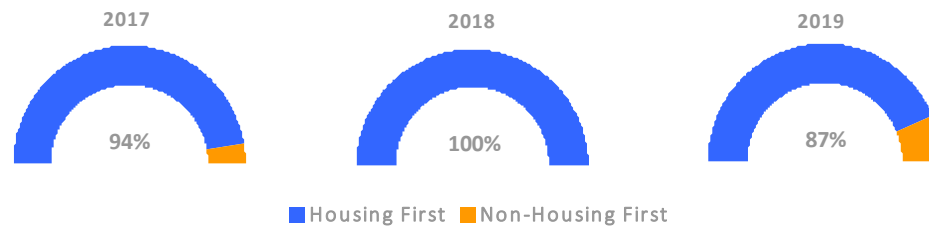
Exits to Permanent Housing by Program Type



Returns to Homelessness Over Time



Proportion of Housing First Projects by Year*



Number of Projects by Year			
	2017	2018	2019
Housing First Projects	370	308	242
Non-Housing First Projects	22	0	35

*In 2020 HUD awarded renewal projects noncompetitively, therefore no new data was collected and Housing First data remains the same from 2019 to 2020.

Data Summary: Florida

Point-In-Time Count Summary

	2016	2017	2018	2019	2020	2019-20 Change	% Change
Number of Sheltered Persons in Families	6,557	6,180	6,951	5,899	5,933	34	1%
Number of Unsheltered Persons in Families	2,801	3,242	2,636	1,164	1,210	46	4%
Number of Sheltered Individuals	11,641	10,931	10,686	9,953	8,882	-1,071	-11%
Number of Unsheltered Individuals	12,560	11,837	10,757	11,312	11,462	150	1%
Total Homeless Persons	33,559	32,190	31,030	28,328	27,487	-841	-3%
Number of Sheltered Families	2,102	1,924	2,070	1,801	1,932	131	7%
Number of Unsheltered Families	929	922	687	370	362	-8	-2%
Number of Total Families	3,031	2,846	2,757	2,171	2,294	123	6%
Sheltered Chronically Homeless Individuals	1,219	1,127	1,237	1,456	1,455	-1	-0%
Unsheltered Chronically Homeless Individuals	4,196	3,824	3,306	3,725	3,195	-530	-14%
Total Chronically Homeless Individuals	5,415	4,951	4,543	5,181	4,650	-531	-10%
Sheltered Veterans	1,825	1,821	1,582	1,576	1,470	-106	-7%
Unsheltered Veterans	1,077	996	961	896	966	70	8%
Total Veterans	2,902	2,817	2,543	2,472	2,436	-36	-1%
Sheltered Unaccompanied Youth (up to 24)	1,106	1,075	1,020	905	803	-102	-11%
Unsheltered Unaccompanied Youth (up to 24)	988	944	872	545	528	-17	-3%
Total Unaccompanied Youth (up to 24)	2,094	2,019	1,892	1,450	1,331	-119	-8%

System Performance Measures Summary

	2016	2017	2018	2019	2020	2019-20 Change	% Change
Rate People Return to Homelessness in 6 Months	11.9%	12.3%	11.3%	11.0%	9.9%	-1.1%	N/A
Number of People who are Homeless for the First Time	53,677	49,913	47,122	43,678	36,188	-7,490	-17.1%
Rate People Exit from ES, SH, TH, and RRH to PH	43.1%	42.1%	43.4%	42.4%	41.9%	-0.6%	N/A
Rate People in PSH and OPH Retain or Exit to PH	92.7%	94.2%	95.5%	95.8%	96.4%	0.6%	N/A

Housing Inventory Count Summary

	2016	2017	2018	2019	2020	2019-20 Change	% Change
Emergency Shelter (ES)	11,372	11,493	12,424	11,595	11,462	-133	-1%
Safe Haven (SH)	122	123	182	217	218	1	0%
Transitional Housing (TH)	10,081	8,366	6,948	6,805	6,113	-692	-10%
Permanent Supportive Housing (PSH)	16,766	17,817	18,628	18,547	17,841	-706	-4%
Rapid Re-Housing (RRH)	5,147	4,945	7,097	6,161	6,630	469	8%
Other Permanent Housing (OPH)	1,093	1,539	1,925	1,993	1,814	-179	-9%

Award Summary

	2016	2017	2018	2019	2020	2019-20 Change	% Change
Continuum of Care (CoC)	\$81,566,866	\$84,273,839	\$85,425,367	\$92,839,896	\$98,991,639	\$6,151,743	7%
Emergency Solutions Grants (ESG)	\$11,692,270	\$16,834,251	\$12,005,522	\$12,613,662	\$13,160,509	\$546,847	4%
Youth Homelessness Demonstration Program (YHDP)	--	--	\$4,932,359	--	\$1,130,108	--	--