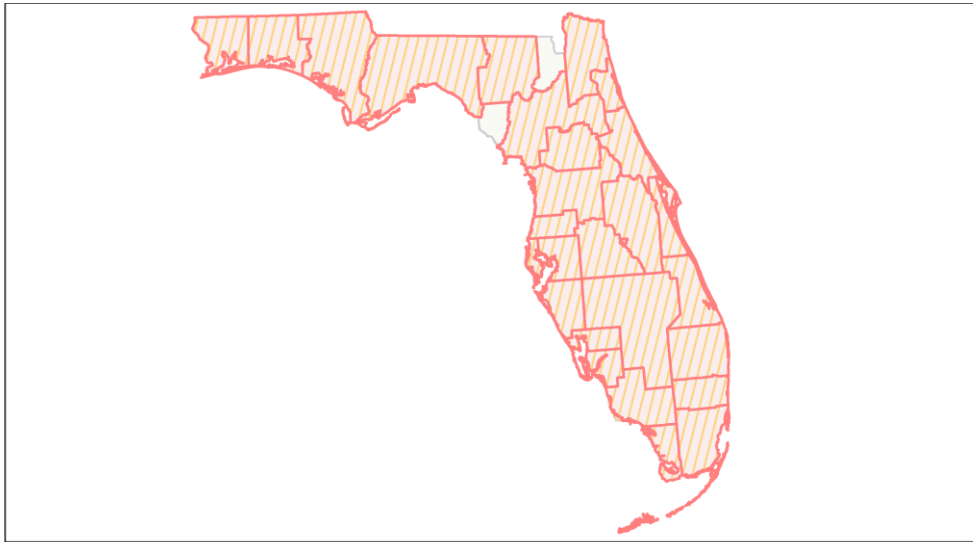
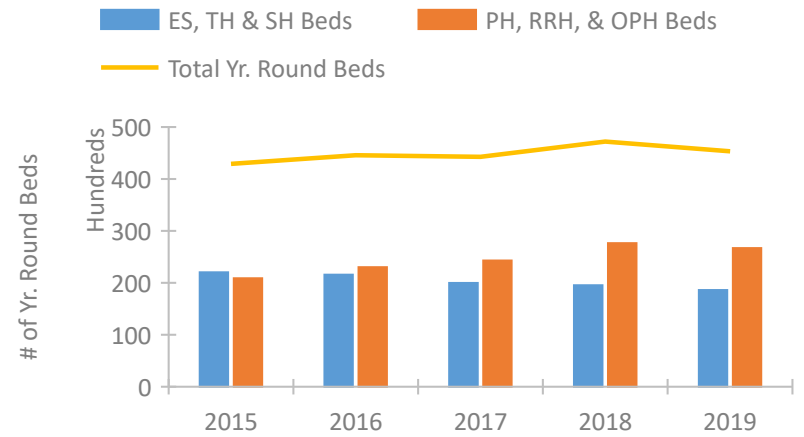


Florida Continuum of Care Performance Profile

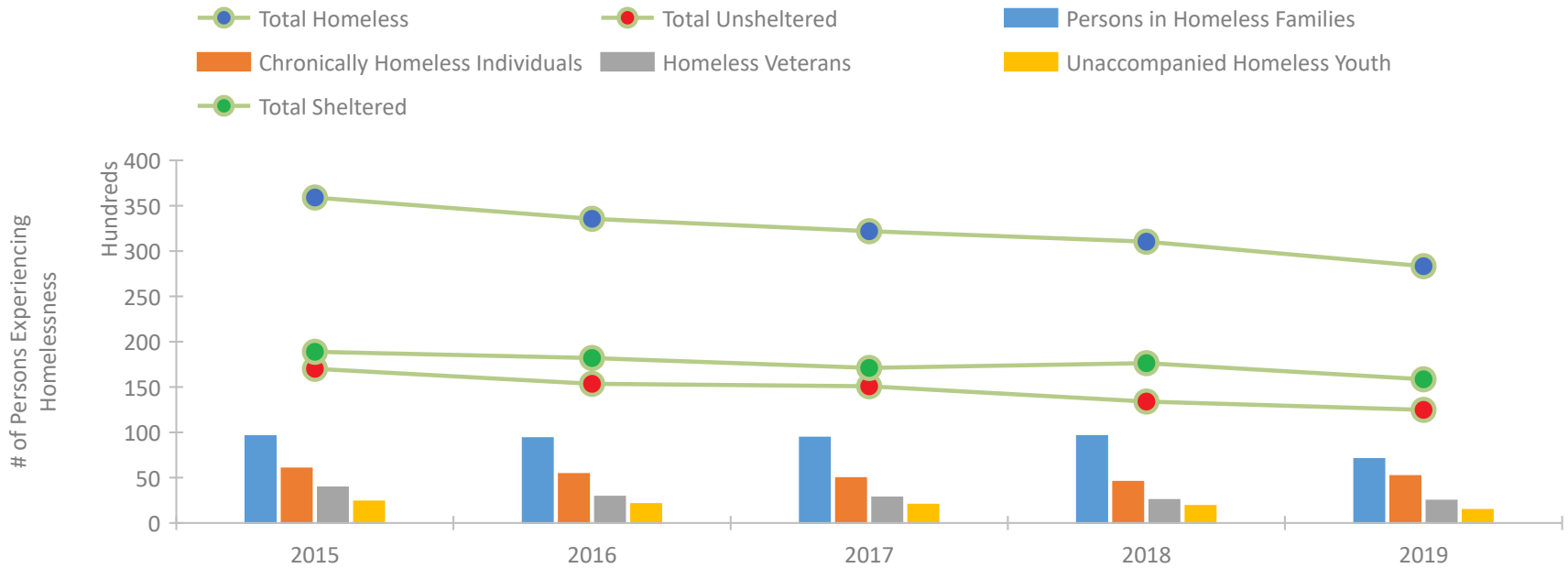


2019 CoC Boundaries 2018 CoC Boundaries

Housing Inventory Count by Program Type

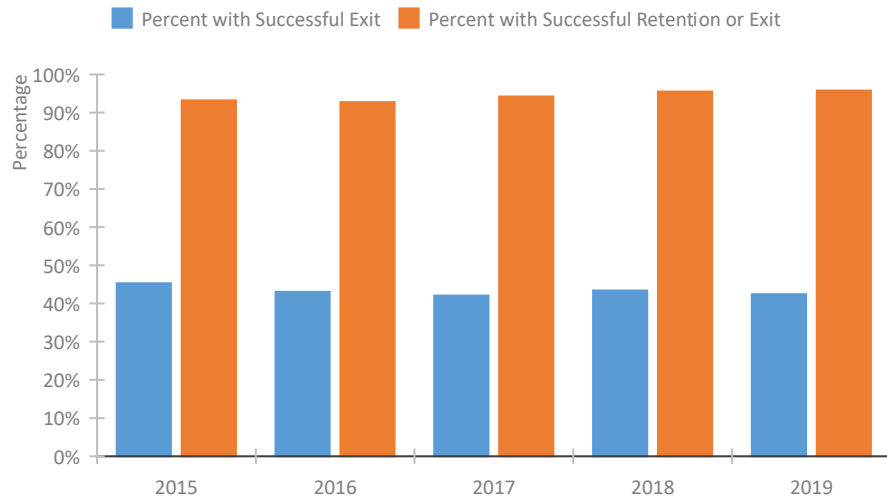


Homeless Population – Point-in-Time (PIT) Count

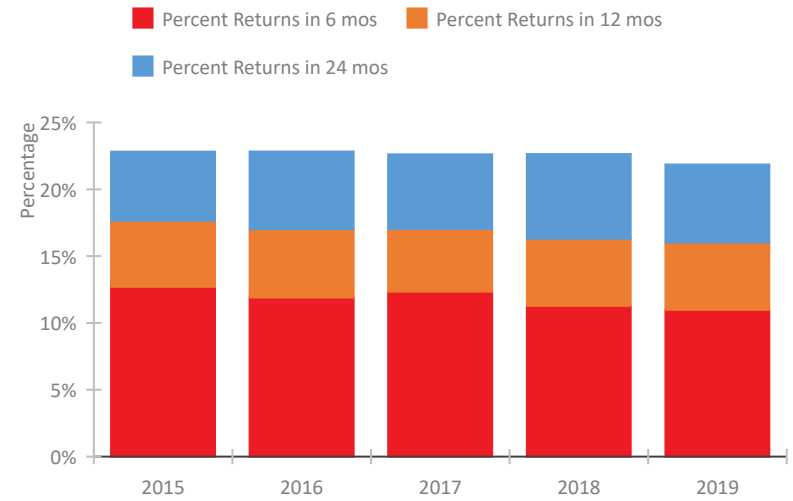


Florida Continuum of Care Performance Profile

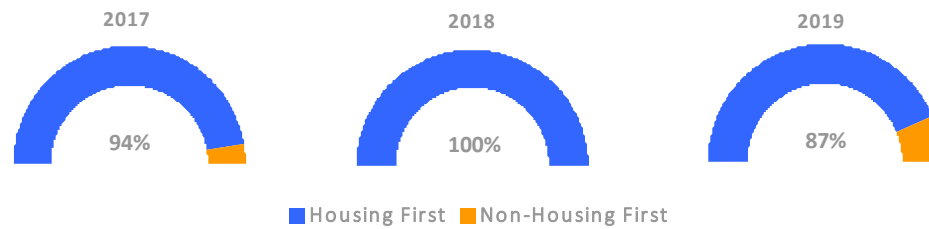
Exits to Permanent Housing by Program Type



Returns to Homelessness Over Time



Proportion of Housing First Projects by Year



Number of Projects by Year

	2017	2018	2019
Housing First Projects	370	308	242
Non-Housing First Projects	22	0	35

Data Summary: Florida

Point-In-Time Count Summary

	2015	2016	2017	2018	2019	2018-19 Change	% Change
Number of Sheltered Persons in Families	6,850	6,557	6,180	6,951	5,899	-1,052	-15%
Number of Unsheltered Persons in Families	2,725	2,801	3,242	2,636	1,164	-1,472	-56%
Number of Sheltered Individuals	12,033	11,641	10,931	10,686	9,953	-733	-7%
Number of Unsheltered Individuals	14,292	12,560	11,837	10,757	11,312	555	5%
Total Homeless Persons	35,900	33,559	32,190	31,030	28,328	-2,702	-9%
Number of Sheltered Families	2,107	2,102	1,924	2,070	1,801	-269	-13%
Number of Unsheltered Families	946	929	922	687	370	-317	-46%
Number of Total Families	3,053	3,031	2,846	2,757	2,171	-586	-21%
Sheltered Chronically Homeless Individuals	1,210	1,219	1,127	1,237	1,456	219	18%
Unsheltered Chronically Homeless Individuals	4,811	4,196	3,824	3,306	3,725	419	13%
Total Chronically Homeless Individuals	6,021	5,415	4,951	4,543	5,181	638	14%
Sheltered Veterans	2,372	1,825	1,821	1,582	1,576	-6	0%
Unsheltered Veterans	1,554	1,077	996	961	896	-65	-7%
Total Veterans	3,926	2,902	2,817	2,543	2,472	-71	-3%
Sheltered Unaccompanied Youth (up to 24)	1,207	1,106	1,075	1,020	905	-115	-11%
Unsheltered Unaccompanied Youth (up to 24)	1,164	988	944	872	545	-327	-38%
Total Unaccompanied Youth (up to 24)	2,371	2,094	2,019	1,892	1,450	-442	-23%

System Performance Measures Summary

	2015	2016	2017	2018	2019	2018-19 Change	% Change
Rate People Return to Homelessness in 6 Months	12.7%	11.9%	12.3%	11.3%	11.0%	-0.3%	N/A
Number of People who are Homeless for the First Time	53,507	53,677	49,913	47,122	43,678	-3,444	-7.3%
Rate People Exit from ES, SH, TH, and RRH to PH	45.3%	43.1%	42.1%	43.4%	42.4%	-1%	N/A
Rate People in PSH and OPH Retain or Exit to PH	93.2%	92.7%	94.2%	95.5%	95.8%	0.3%	N/A

Housing Inventory Count Summary

	2015	2016	2017	2018	2019	2018-19 Change	% Change
Emergency Shelter (ES)	10,891	11,372	11,493	12,424	11,595	-829	-7%
Safe Haven (SH)	138	122	123	182	217	35	19%
Transitional Housing (TH)	10,997	10,081	8,366	6,948	6,805	-143	-2%
Permanent Supportive Housing (PSH)	16,271	16,766	17,817	18,628	18,547	-81	0%
Rapid Re-Housing (RRH)	2,926	5,147	4,945	7,097	6,161	-936	-13%
Other Permanent Housing (OPH)	1,483	1,093	1,539	1,925	1,993	68	4%

Award Summary

	2015	2016	2017	2018	2019	2018-19 Change	% Change
Continuum of Care (CoC)	\$82,306,517	\$81,566,866	\$84,273,839	\$85,425,367	\$92,839,896	\$7,414,529	9%
Emergency Solutions Grants (ESG)	\$11,500,068	\$11,692,270	\$16,834,251	\$12,005,522	\$12,613,662	\$608,140	5%
Youth Homelessness Demonstration Program (YHDP)	N/A	--	--	\$4,932,359	--	--	--