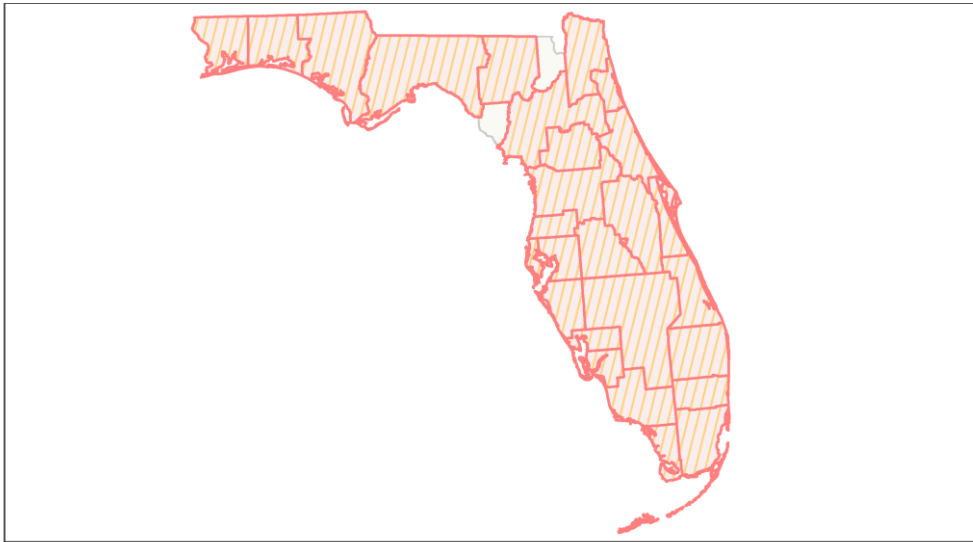
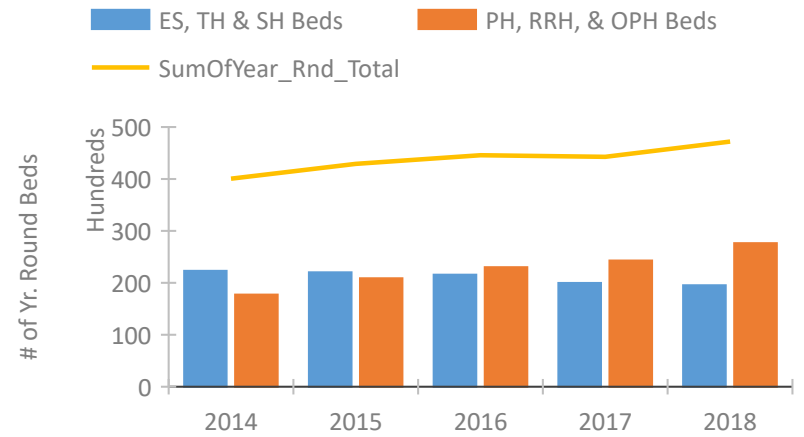


Florida Continuum of Care Performance Profile

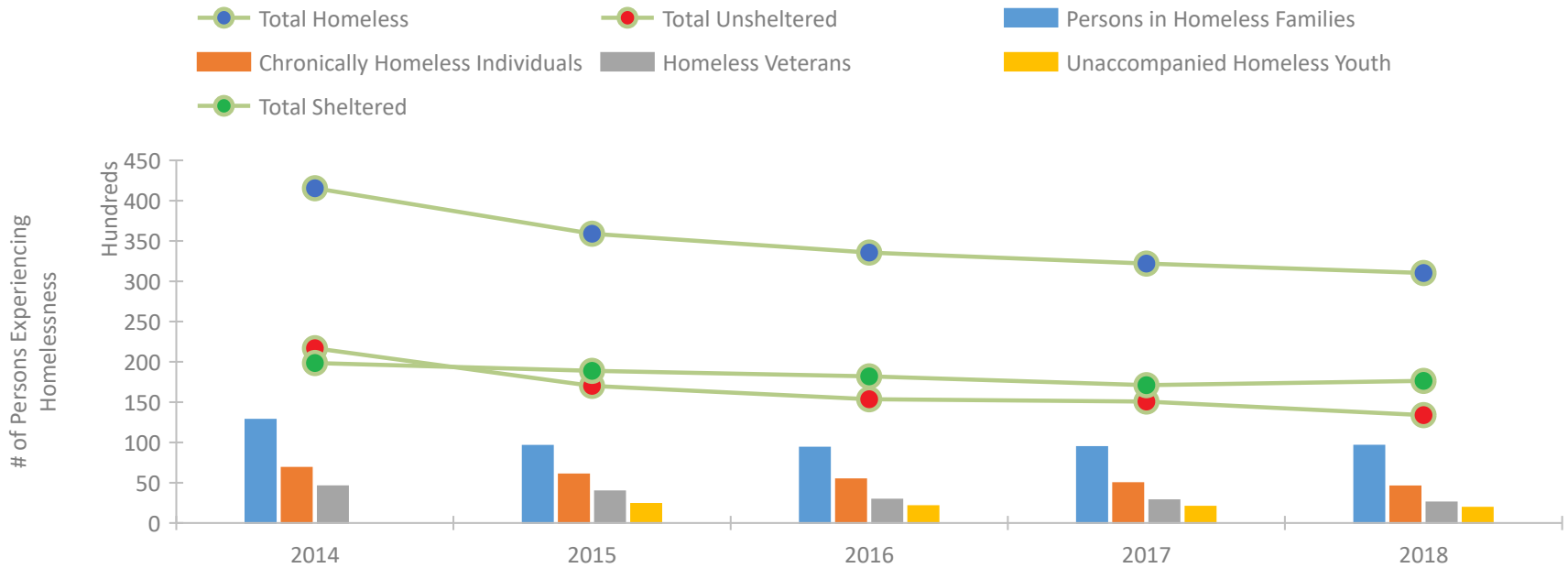


2018 CoC Boundaries 2017 CoC Boundaries

Housing Inventory Count by Program Type

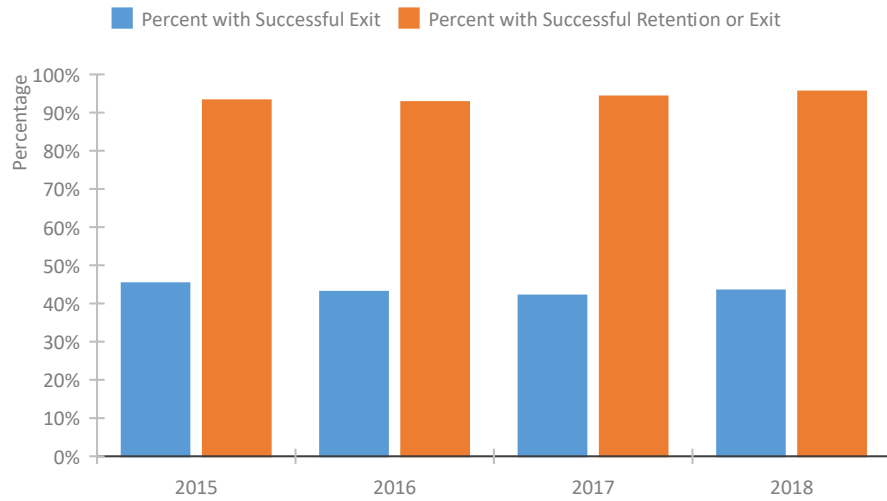


Homeless Population – Point-in-Time (PIT) Count

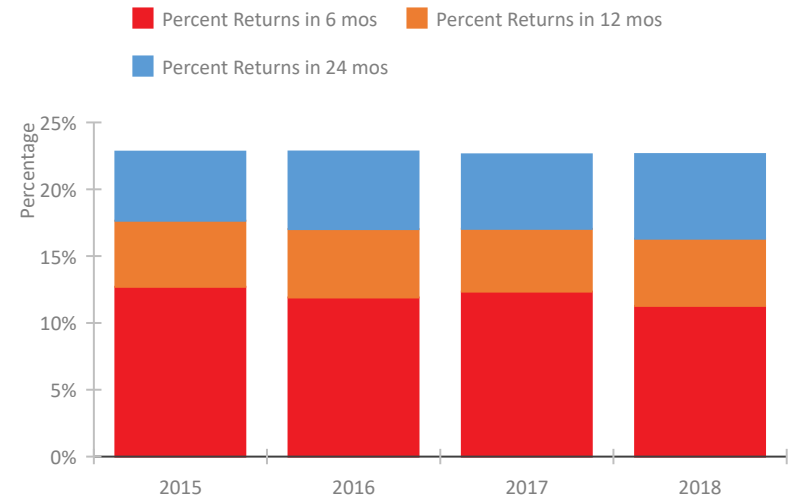


Florida Continuum of Care Performance Profile

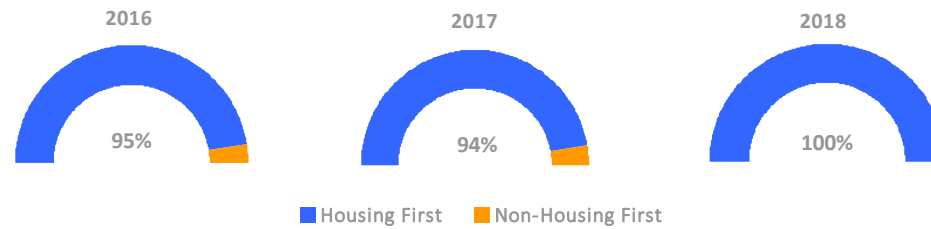
Exits to Permanent Housing by Program Type



Returns to Homelessness Over Time



Proportion of Housing First Projects by Year



Number of Projects by Year

	2016	2017	2018
Housing First Projects	257	370	308
Non-Housing First Projects	14	22	0

Data Summary: Florida

Point-In-Time Count Summary

	2014	2015	2016	2017	2018	2017-18 Change	% Change
Number of Sheltered Persons in Families	6,965	6,850	6,557	6,180	6,951	771	12%
Number of Unsheltered Persons in Families	5,847	2,725	2,801	3,242	2,636	-606	-19%
Number of Sheltered Individuals	12,044	11,704	11,349	10,597	10,363	-234	-2%
Number of Unsheltered Individuals	14,946	14,005	12,310	11,689	10,631	-1,058	-9%
Total Homeless Persons	39,802	35,284	33,017	31,708	30,581	-1,127	-4%
Number of Sheltered Families	2,227	2,107	2,102	1,924	2,070	146	8%
Number of Unsheltered Families	2,323	946	929	922	687	-235	-25%
Number of Total Families	4,550	3,053	3,031	2,846	2,757	-89	-3%
Sheltered Chronically Homeless Individuals	1,717	1,210	1,219	1,127	1,237	110	10%
Unsheltered Chronically Homeless Individuals	5,126	4,811	4,196	3,824	3,306	-518	-14%
Total Chronically Homeless Individuals	6,843	6,021	5,415	4,951	4,543	-408	-8%
Sheltered Veterans	2,424	2,372	1,825	1,821	1,582	-239	-13%
Unsheltered Veterans	2,128	1,554	1,077	996	961	-35	-4%
Total Veterans	4,552	3,926	2,902	2,817	2,543	-274	-10%
Sheltered Unaccompanied Youth (up to 24)	--	1,207	1,106	1,075	1,020	-55	-5%
Unsheltered Unaccompanied Youth (up to 24)	--	1,164	988	944	872	-72	-8%
Total Unaccompanied Youth (up to 24)	--	2,371	2,094	2,019	1,892	-127	-6%

System Performance Measures Summary

	2014	2015	2016	2017	2018	2017-18 Change	% Change
Rate People Return to Homelessness in 6 Months	N/A	12.7%	11.9%	12.3%	11.3%	-1.1%	N/A
Number of People who are Homeless for the First Time	N/A	53,507	53,677	49,913	47,122	-2,791	-5.6%
Rate People Exit from ES, SH, TH, and RRH to PH	N/A	45.3%	43.1%	42.1%	43.4%	1.3%	N/A
Rate People in PSH and OPH Retain or Exit to PH	N/A	93.2%	92.7%	94.2%	95.5%	1.3%	N/A

Housing Inventory Count Summary

	2014	2015	2016	2017	2018	2017-18 Change	% Change
Emergency Shelter (ES)	10,286	10,891	11,372	11,493	12,424	931	8%
Safe Haven (SH)	138	138	122	123	182	59	48%
Transitional Housing (TH)	11,892	10,997	10,081	8,366	6,948	-1,418	-17%
Permanent Supportive Housing (PSH)	15,742	16,271	16,766	17,817	18,628	811	5%
Rapid Re-Housing (RRH)	1,444	2,926	5,147	4,945	7,097	2,152	44%
Other Permanent Housing (OPH)	308	1,483	1,093	1,539	1,925	386	25%

Award Summary

	2014	2015	2016	2017	2018	2017-18 Change	% Change
Continuum of Care (CoC)	\$84,255,169	\$82,306,517	\$81,566,866	\$84,273,839	\$85,425,367	\$1,151,528	1%
Emergency Solutions Grants (ESG)	\$10,432,491	\$11,352,690	\$11,544,268	\$16,690,192	\$12,005,522	(\$4,684,670)	-28%
Youth Homelessness Demonstration Program (YHDP)	N/A	N/A	--	--	\$4,932,359	--	--