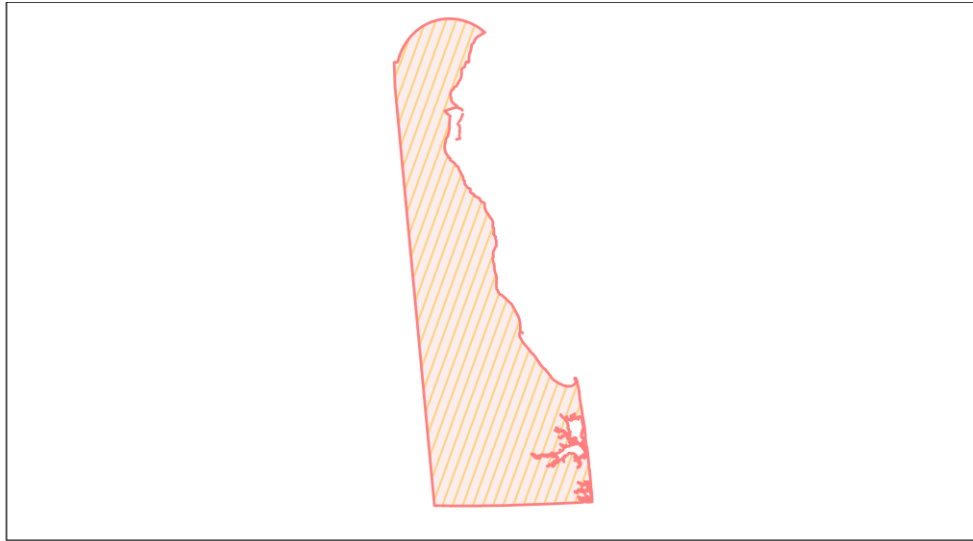
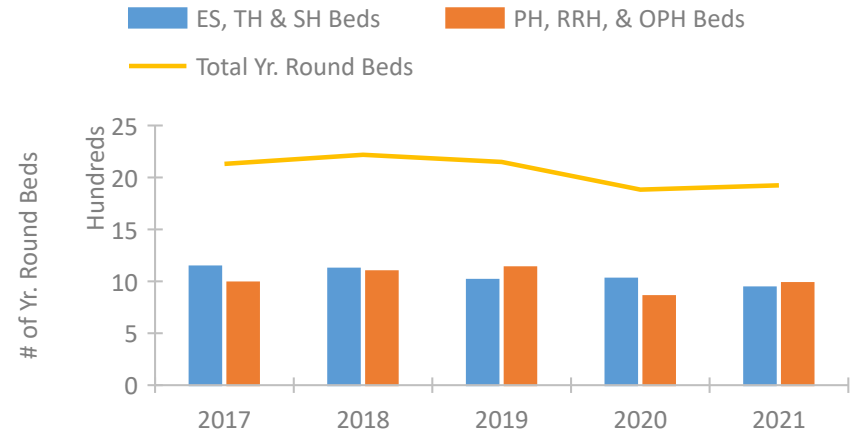


Delaware Continuum of Care Performance Profile

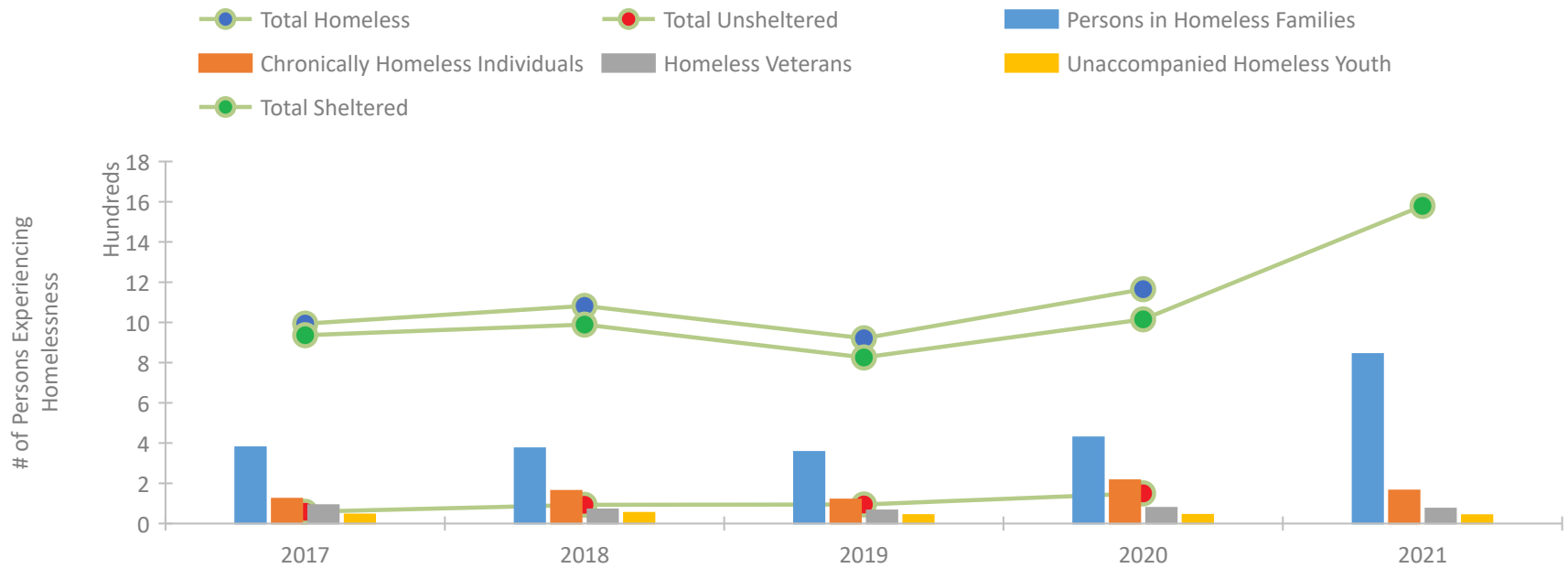


2021 CoC Boundaries 2020 CoC Boundaries

Housing Inventory Count by Program Type



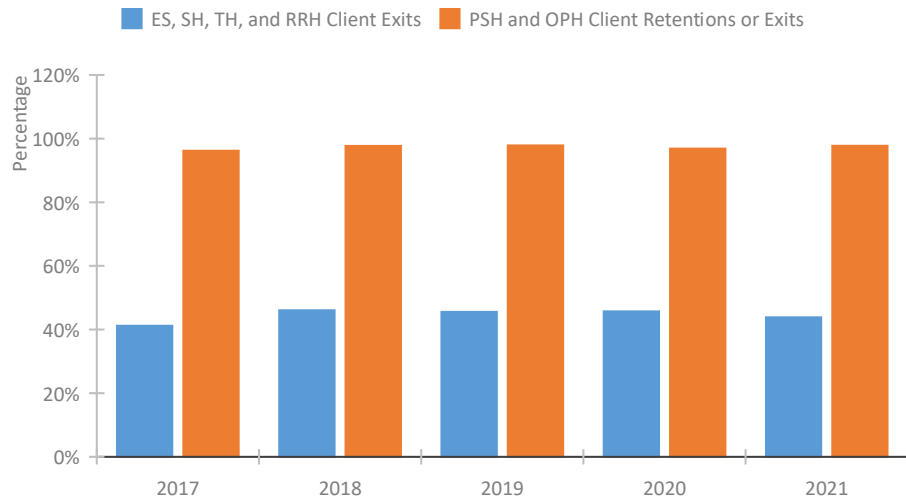
Homeless Population – Point-in-Time (PIT) Count*



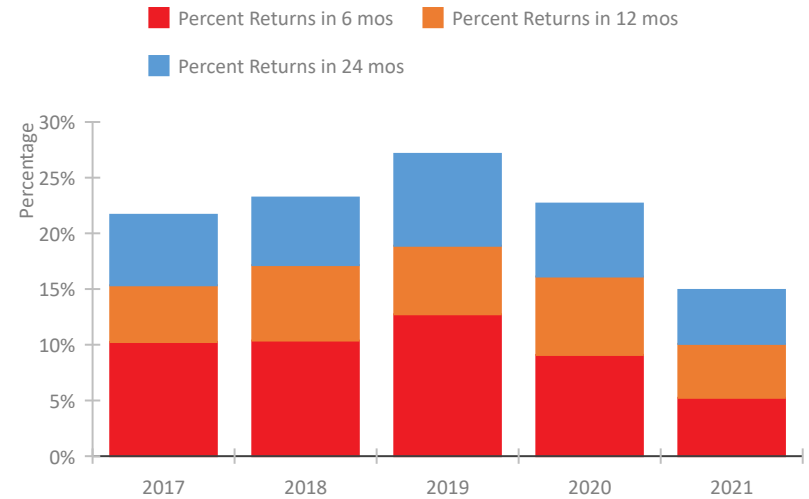
*In 2021, HUD gave communities the option to cancel or modify the unsheltered survey portion of their counts based on the potential risk of COVID-19 transmission associated with conducting an in-person survey. As a result, HUD has excluded the unsheltered population sub-totals and all unsheltered sub-population data for this reporting period. The user is cautioned that the unsheltered and total homeless counts reported here may be missing data.

Delaware Continuum of Care Performance Profile

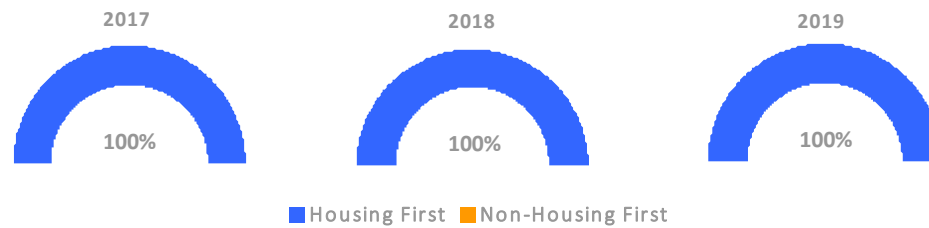
Exits to Permanent Housing by Program Type



Returns to Homelessness Over Time



Proportion of Housing First Projects by Year†



Number of Projects by Year			
	2017	2018	2019
Housing First Projects	27	29	27
Non-Housing First Projects	0	0	0

†2021 Data unavailable at the time of report publication. In 2020 HUD awarded renewal projects noncompetitively, therefore no new data was collected and Housing First data remains the same from 2019 to 2020.

Data Summary: Delaware

Point-In-Time Count Summary*

	2017	2018	2019	2020	2021	2020-21 Change	% Change
Number of Sheltered Persons in Families	373	374	337	414	843	429	104%
Number of Unsheltered Persons in Families	6	0	19	14	0	-14	-100%
Number of Sheltered Individuals	563	615	489	601	736	135	22%
Number of Unsheltered Individuals	52	93	76	136	--	--	--
Total Homeless Persons	994	1,082	921	1,165	1,579	414	36%
Number of Sheltered Families	127	125	111	132	255	123	93%
Number of Unsheltered Families	2	0	5	4	--	--	--
Number of Total Families	129	125	116	136	255	119	88%
Sheltered Chronically Homeless Individuals	98	143	86	167	164	-3	-2%
Unsheltered Chronically Homeless Individuals	25	19	33	48	--	--	--
Total Chronically Homeless Individuals	123	162	119	215	164	-51	-24%
Sheltered Veterans	85	67	61	71	74	3	4%
Unsheltered Veterans	6	3	4	7	--	--	--
Total Veterans	91	70	65	78	74	-4	-5%
Sheltered Unaccompanied Youth (up to 24)	43	45	39	33	41	8	24%
Unsheltered Unaccompanied Youth (up to 24)	2	8	3	10	--	--	--
Total Unaccompanied Youth (up to 24)	45	53	42	43	41	-2	-5%

System Performance Measures Summary

	2017	2018	2019	2020	2021	2020-21 Change	% Change
Rate People Return to Homelessness in 6 Months	10.3%	10.4%	12.7%	9.1%	5.2%	-3.9%	N/A
Number of People who are Homeless for the First Time	2,836	1,934	1,751	1,641	1,983	342	20.8%
Rate People Exit from ES, SH, TH, and RRH to PH	41.2%	46.0%	45.5%	45.7%	43.8%	-1.9%	N/A
Rate People in PSH and OPH Retain or Exit to PH	96.2%	97.7%	97.9%	96.9%	97.7%	0.9%	N/A

Housing Inventory Count Summary

	2017	2018	2019	2020	2021	2020-21 Change	% Change
Emergency Shelter (ES)	575	629	577	644	537	-107	-17%
Transitional Housing (TH)	568	488	437	382	404	22	6%
Permanent Supportive Housing (PSH)	671	850	904	670	640	-30	-4%
Rapid Re-Housing (RRH)	216	155	131	169	290	121	72%
Other Permanent Housing (OPH)	101	92	100	19	54	35	184%

Award Summary

	2017	2018	2019	2020	2021	2020-21 Change	% Change
Continuum of Care (CoC)	\$7,952,480	\$8,249,505	\$8,065,668	\$8,344,406	\$8,950,480	\$606,074	7%
Emergency Solutions Grants (ESG)	\$575,383	\$571,852	\$595,996	\$622,100	\$633,311	\$11,211	2%

*In 2021, HUD gave communities the option to cancel or modify the unsheltered survey portion of their counts based on the potential risk of COVID-19 transmission associated with conducting an in-person survey. As a result, HUD has excluded the unsheltered population sub-totals and all unsheltered sub-population data for this reporting period. The user is cautioned that the unsheltered and total homeless counts reported here may be missing data.