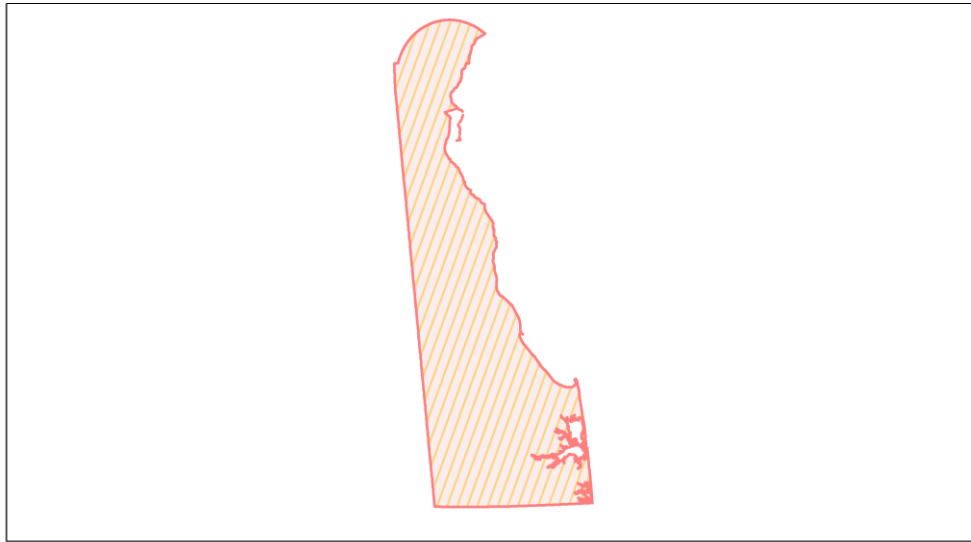
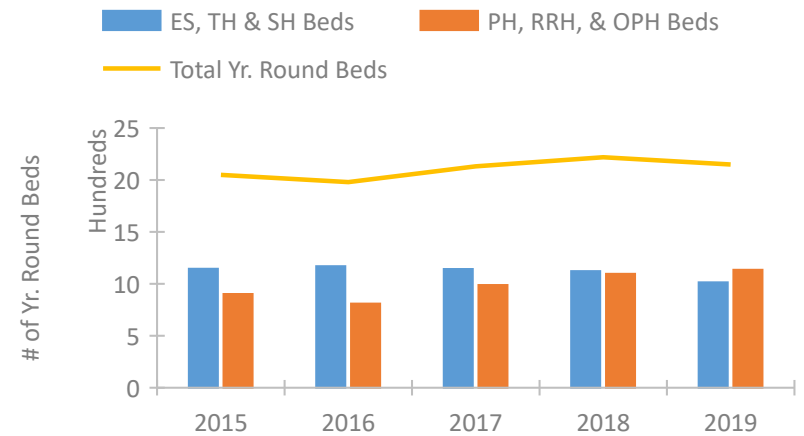


Delaware Continuum of Care Performance Profile

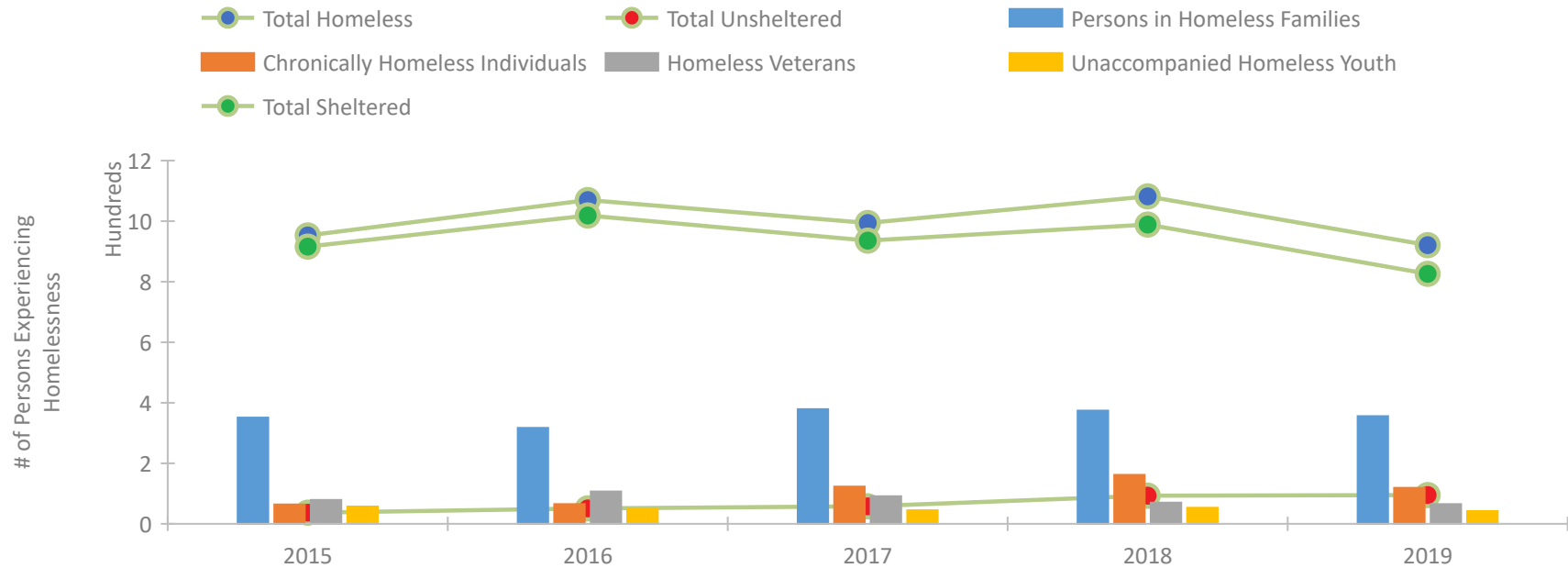


□ 2019 CoC Boundaries
 ▨ 2018 CoC Boundaries

Housing Inventory Count by Program Type

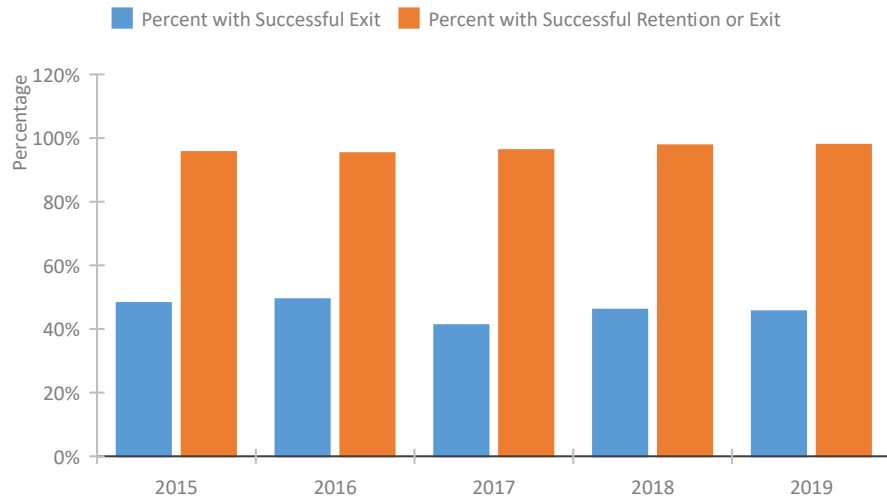


Homeless Population – Point-in-Time (PIT) Count

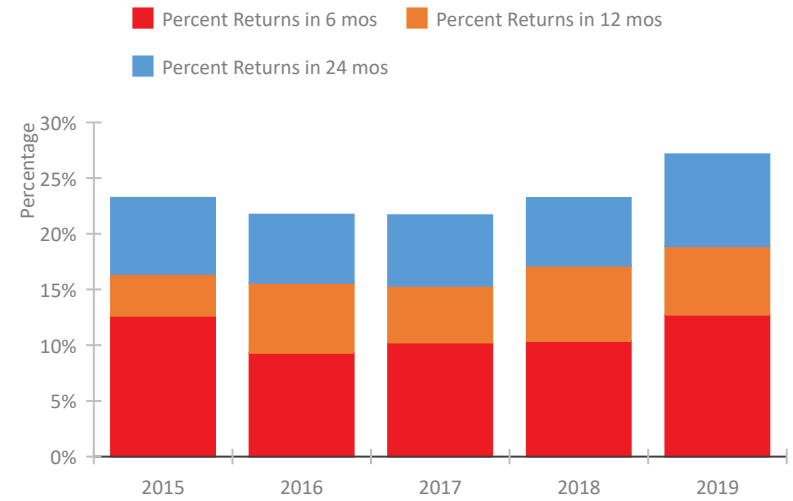


Delaware Continuum of Care Performance Profile

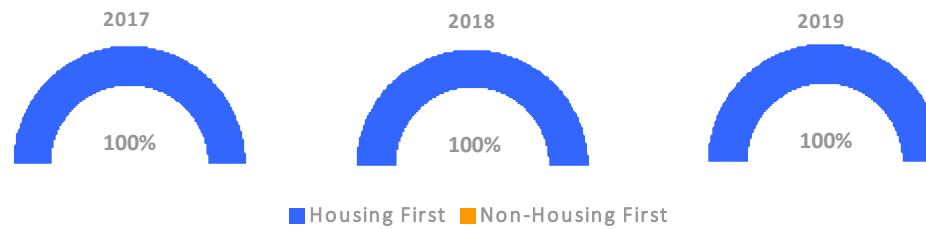
Exits to Permanent Housing by Program Type



Returns to Homelessness Over Time



Proportion of Housing First Projects by Year



Number of Projects by Year

	2017	2018	2019
Housing First Projects	27	29	27
Non-Housing First Projects	0	0	0

Data Summary: Delaware

Point-In-Time Count Summary

	2015	2016	2017	2018	2019	2018-19 Change	% Change
Number of Sheltered Persons in Families	351	317	373	374	337	-37	-10%
Number of Unsheltered Persons in Families	0	0	6	0	19	19	100%
Number of Sheltered Individuals	565	702	563	615	489	-126	-20%
Number of Unsheltered Individuals	37	51	52	93	76	-17	-18%
Total Homeless Persons	953	1,070	994	1,082	921	-161	-15%
Number of Sheltered Families	115	108	127	125	111	-14	-11%
Number of Unsheltered Families	0	0	2	0	5	5	100%
Number of Total Families	115	108	129	125	116	-9	-7%
Sheltered Chronically Homeless Individuals	59	63	98	143	86	-57	-40%
Unsheltered Chronically Homeless Individuals	5	2	25	19	33	14	74%
Total Chronically Homeless Individuals	64	65	123	162	119	-43	-27%
Sheltered Veterans	74	103	85	67	61	-6	-9%
Unsheltered Veterans	5	4	6	3	4	1	33%
Total Veterans	79	107	91	70	65	-5	-7%
Sheltered Unaccompanied Youth (up to 24)	56	46	43	45	39	-6	-13%
Unsheltered Unaccompanied Youth (up to 24)	1	5	2	8	3	-5	-62%
Total Unaccompanied Youth (up to 24)	57	51	45	53	42	-11	-21%

System Performance Measures Summary

	2015	2016	2017	2018	2019	2018-19 Change	% Change
Rate People Return to Homelessness in 6 Months	12.6%	9.3%	10.3%	10.4%	12.7%	2.4%	N/A
Number of People who are Homeless for the First Time	2,175	2,260	2,836	1,934	1,751	-183	-9.5%
Rate People Exit from ES, SH, TH, and RRH to PH	48.1%	49.3%	41.2%	46.0%	45.5%	-0.5%	N/A
Rate People in PSH and OPH Retain or Exit to PH	95.6%	95.2%	96.2%	97.7%	97.9%	0.2%	N/A

Housing Inventory Count Summary

	2015	2016	2017	2018	2019	2018-19 Change	% Change
Emergency Shelter (ES)	588	590	575	629	577	-52	-8%
Transitional Housing (TH)	558	580	568	488	437	-51	-10%
Permanent Supportive Housing (PSH)	727	601	671	850	904	54	6%
Rapid Re-Housing (RRH)	176	144	216	155	131	-24	-15%
Other Permanent Housing (OPH)	--	65	101	92	100	8	9%

Award Summary

	2015	2016	2017	2018	2019	2018-19 Change	% Change
Continuum of Care (CoC)	\$7,785,779	\$7,858,054	\$7,952,480	\$8,249,505	\$8,065,668	(\$183,837)	-2%
Emergency Solutions Grants (ESG)	\$581,518	\$575,625	\$575,383	\$571,852	\$595,996	\$24,144	4%