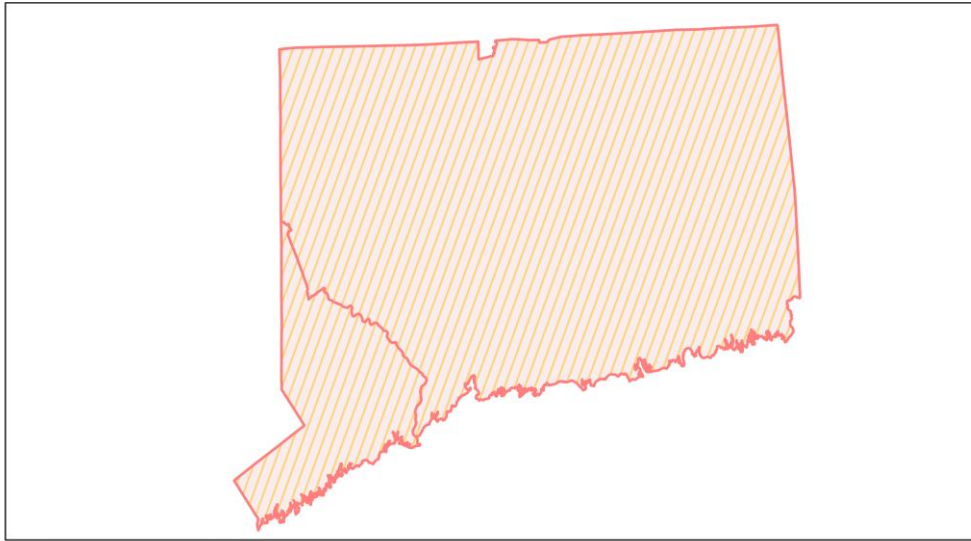
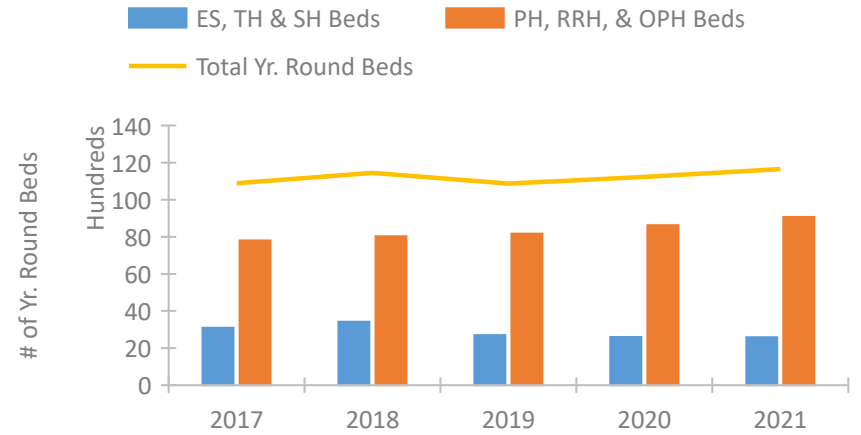


Connecticut Continuum of Care Performance Profile

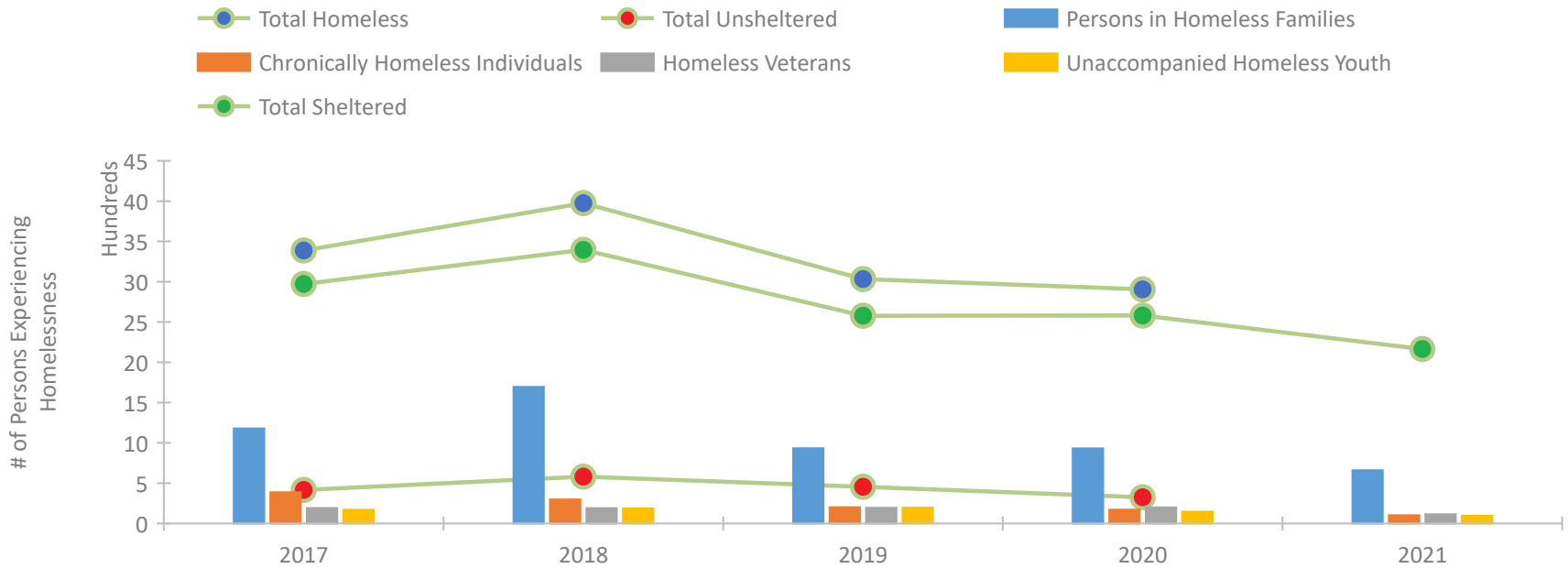


2021 CoC Boundaries 2020 CoC Boundaries

Housing Inventory Count by Program Type



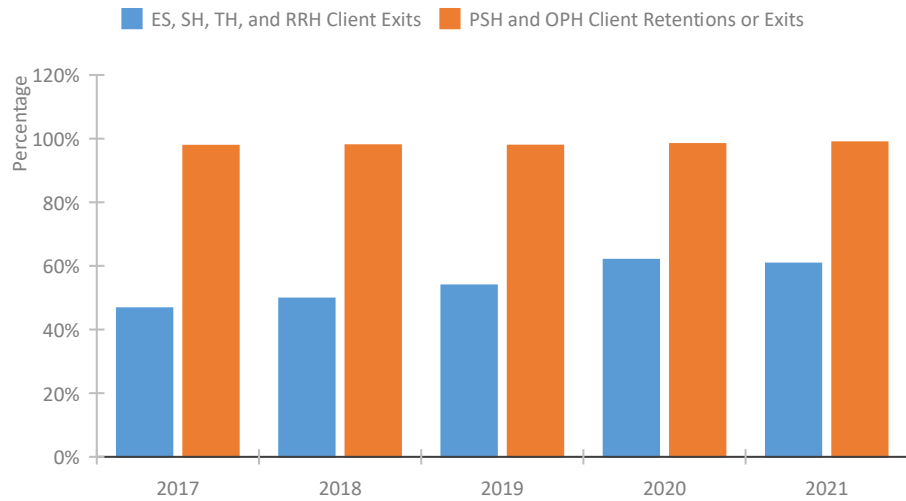
Homeless Population – Point-in-Time (PIT) Count*



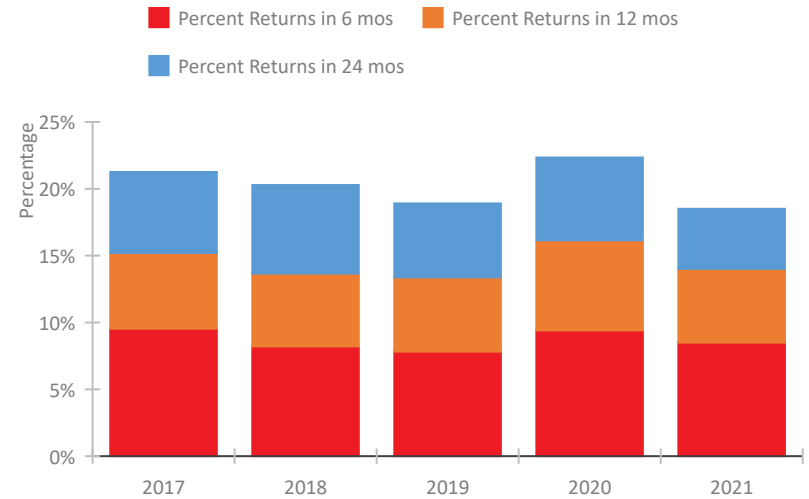
*In 2021, HUD gave communities the option to cancel or modify the unsheltered survey portion of their counts based on the potential risk of COVID-19 transmission associated with conducting an in-person survey. As a result, HUD has excluded the unsheltered population sub-totals and all unsheltered sub-population data for this reporting period. The user is cautioned that the unsheltered and total homeless counts reported here may be missing data.

Connecticut Continuum of Care Performance Profile

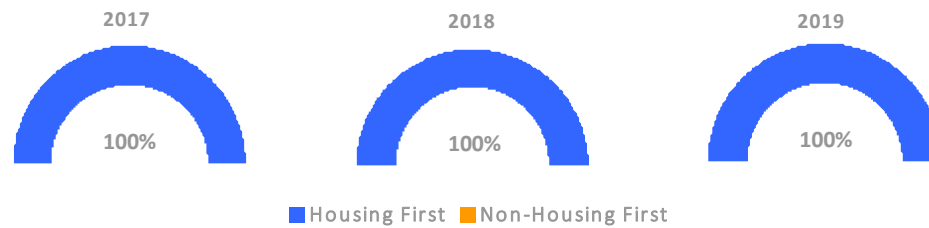
Exits to Permanent Housing by Program Type



Returns to Homelessness Over Time



Proportion of Housing First Projects by Year†



Number of Projects by Year			
	2017	2018	2019
Housing First Projects	142	143	141
Non-Housing First Projects	0	0	0

†2021 Data unavailable at the time of report publication. In 2020 HUD awarded renewal projects noncompetitively, therefore no new data was collected and Housing First data remains the same from 2019 to 2020.

Data Summary: Connecticut

Point-In-Time Count Summary*

	2017	2018	2019	2020	2021	2020-21 Change	% Change
Number of Sheltered Persons in Families	1,176	1,696	929	930	661	-269	-29%
Number of Unsheltered Persons in Families	4	0	4	2	0	-2	-100%
Number of Sheltered Individuals	1,796	1,699	1,648	1,650	1,504	-146	-9%
Number of Unsheltered Individuals	412	581	452	323	--	--	--
Total Homeless Persons	3,388	3,976	3,033	2,905	2,165	-740	-25%
Number of Sheltered Families	391	553	303	305	234	-71	-23%
Number of Unsheltered Families	1	0	2	1	--	--	--
Number of Total Families	392	553	305	306	234	-72	-24%
Sheltered Chronically Homeless Individuals	240	195	129	121	102	-19	-16%
Unsheltered Chronically Homeless Individuals	147	103	73	50	--	--	--
Total Chronically Homeless Individuals	387	298	202	171	102	-69	-40%
Sheltered Veterans	177	177	182	187	114	-73	-39%
Unsheltered Veterans	14	13	13	12	--	--	--
Total Veterans	191	190	195	199	114	-85	-43%
Sheltered Unaccompanied Youth (up to 24)	106	118	124	120	96	-24	-20%
Unsheltered Unaccompanied Youth (up to 24)	64	69	72	28	--	--	--
Total Unaccompanied Youth (up to 24)	170	187	196	148	96	-52	-35%

System Performance Measures Summary

	2017	2018	2019	2020	2021	2020-21 Change	% Change
Rate People Return to Homelessness in 6 Months	9.5%	8.2%	7.8%	9.4%	8.5%	-0.9%	N/A
Number of People who are Homeless for the First Time	5,607	4,967	4,855	3,763	3,684	-79	-2.1%
Rate People Exit from ES, SH, TH, and RRH to PH	46.7%	49.7%	53.9%	61.9%	60.7%	-1.2%	N/A
Rate People in PSH and OPH Retain or Exit to PH	97.7%	97.9%	97.8%	98.3%	98.8%	0.5%	N/A

Housing Inventory Count Summary

	2017	2018	2019	2020	2021	2020-21 Change	% Change
Emergency Shelter (ES)	2,248	2,835	2,147	2,062	2,093	31	2%
Safe Haven (SH)	--	--	5	11	15	4	36%
Transitional Housing (TH)	846	582	545	527	478	-49	-9%
Permanent Supportive Housing (PSH)	6,982	7,059	7,151	7,268	7,371	103	1%
Rapid Re-Housing (RRH)	820	968	1,020	1,360	1,698	338	25%

Award Summary

	2017	2018	2019	2020	2021	2020-21 Change	% Change
Continuum of Care (CoC)	\$45,869,536	\$49,020,640	\$57,347,545	\$60,659,441	\$63,494,682	\$2,835,241	5%
Emergency Solutions Grants (ESG)	\$3,193,473	\$3,201,477	\$3,327,057	\$3,476,608	\$3,503,783	\$27,175	1%
Youth Homelessness Demonstration Program (YHDP)	--	\$3,013,674	--	--	--	--	--

*In 2021, HUD gave communities the option to cancel or modify the unsheltered survey portion of their counts based on the potential risk of COVID-19 transmission associated with conducting an in-person survey. As a result, HUD has excluded the unsheltered population sub-totals and all unsheltered sub-population data for this reporting period. The user is cautioned that the unsheltered and total homeless counts reported here may be missing data.