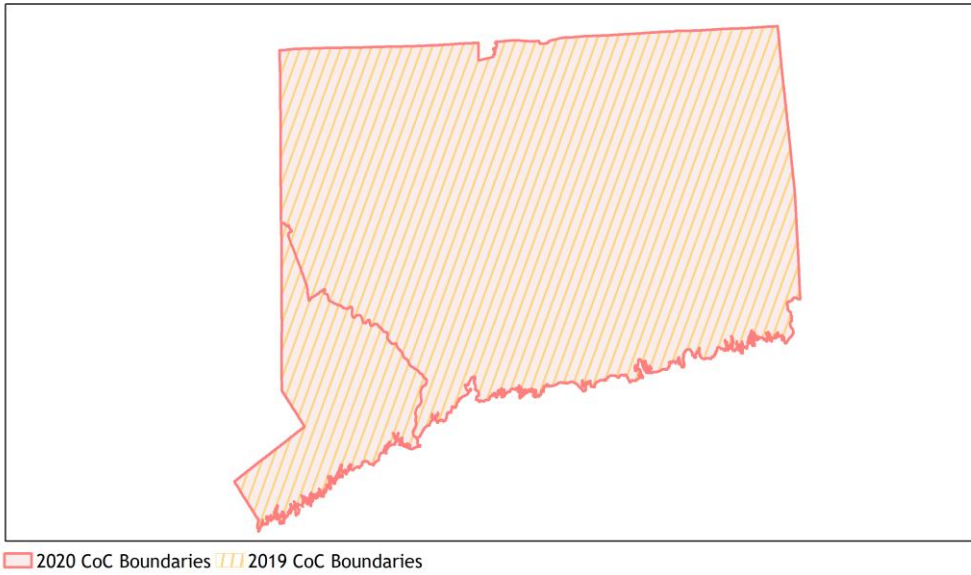
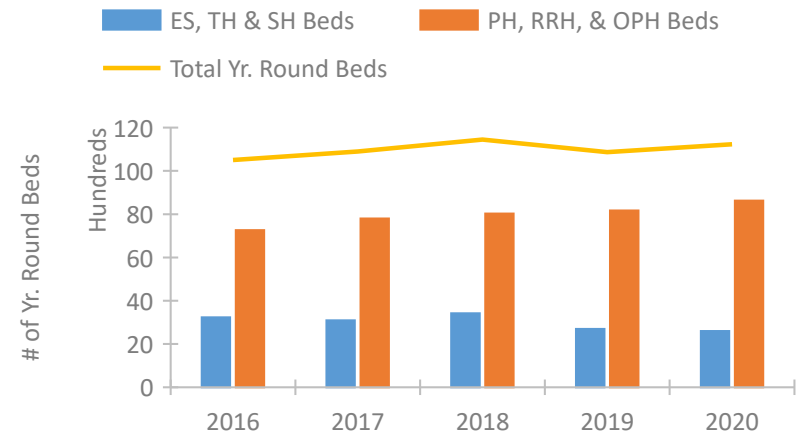


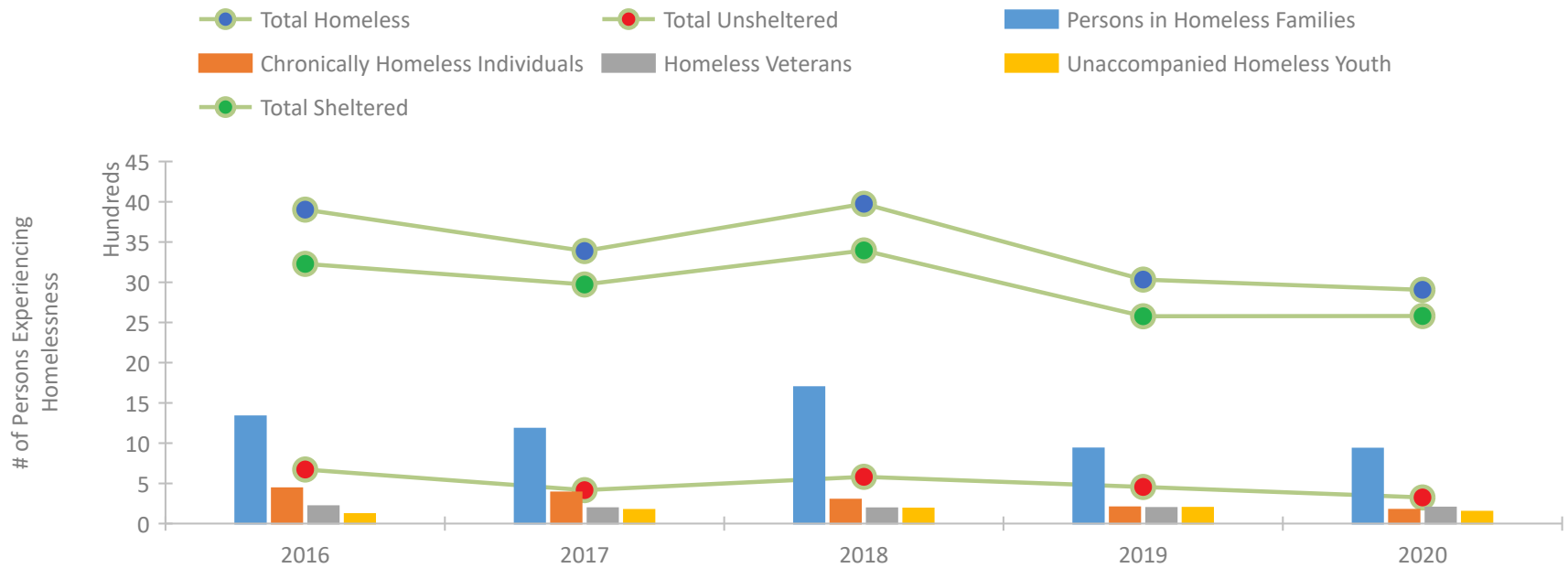
Connecticut Continuum of Care Performance Profile



Housing Inventory Count by Program Type



Homeless Population – Point-in-Time (PIT) Count

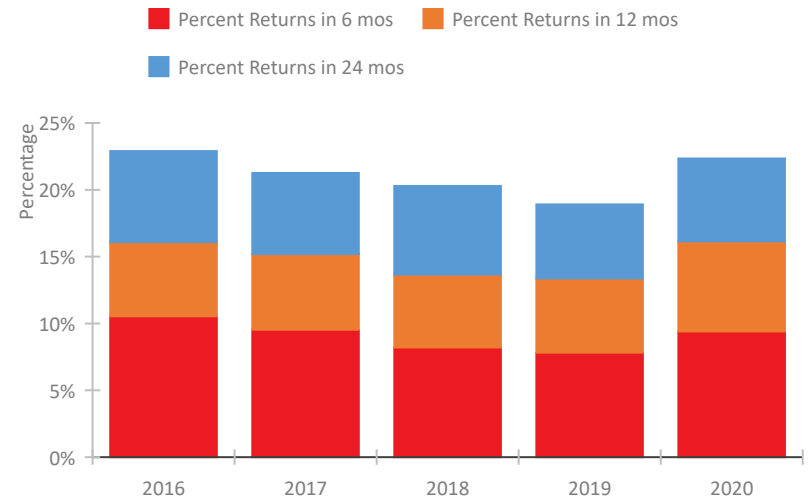


Connecticut Continuum of Care Performance Profile

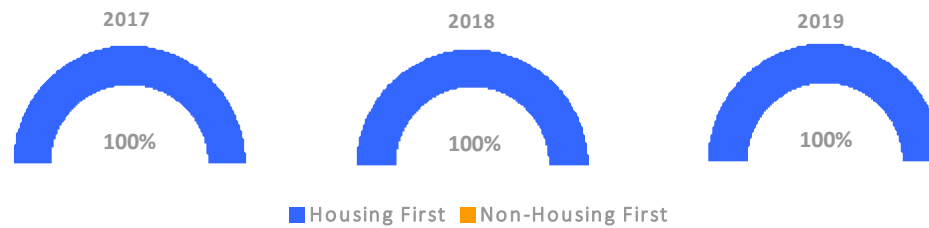
Exits to Permanent Housing by Program Type



Returns to Homelessness Over Time



Proportion of Housing First Projects by Year*



Number of Projects by Year			
	2017	2018	2019
Housing First Projects	142	143	141
Non-Housing First Projects	0	0	0

*In 2020 HUD awarded renewal projects noncompetitively, therefore no new data was collected and Housing First data remains the same from 2019 to 2020.

Data Summary: Connecticut

Point-In-Time Count Summary

	2016	2017	2018	2019	2020	2019-20 Change	% Change
Number of Sheltered Persons in Families	1,326	1,176	1,696	929	930	1	0%
Number of Unsheltered Persons in Families	6	4	0	4	2	-2	-50%
Number of Sheltered Individuals	1,903	1,796	1,699	1,648	1,650	2	0%
Number of Unsheltered Individuals	667	412	581	452	323	-129	-29%
Total Homeless Persons	3,902	3,388	3,976	3,033	2,905	-128	-4%
Number of Sheltered Families	447	391	553	303	305	2	1%
Number of Unsheltered Families	2	1	0	2	1	-1	-50%
Number of Total Families	449	392	553	305	306	1	0%
Sheltered Chronically Homeless Individuals	254	240	195	129	121	-8	-6%
Unsheltered Chronically Homeless Individuals	185	147	103	73	50	-23	-32%
Total Chronically Homeless Individuals	439	387	298	202	171	-31	-15%
Sheltered Veterans	173	177	177	182	187	5	3%
Unsheltered Veterans	43	14	13	13	12	-1	-8%
Total Veterans	216	191	190	195	199	4	2%
Sheltered Unaccompanied Youth (up to 24)	97	106	118	124	120	-4	-3%
Unsheltered Unaccompanied Youth (up to 24)	22	64	69	72	28	-44	-61%
Total Unaccompanied Youth (up to 24)	119	170	187	196	148	-48	-24%

System Performance Measures Summary

	2016	2017	2018	2019	2020	2019-20 Change	% Change
Rate People Return to Homelessness in 6 Months	10.5%	9.5%	8.2%	7.8%	9.4%	1.6%	N/A
Number of People who are Homeless for the First Time	6,835	5,607	4,967	4,855	3,763	-1,092	-22.5%
Rate People Exit from ES, SH, TH, and RRH to PH	48.9%	46.7%	49.7%	53.9%	61.9%	8%	N/A
Rate People in PSH and OPH Retain or Exit to PH	97.4%	97.7%	97.9%	97.8%	98.3%	0.5%	N/A

Housing Inventory Count Summary

	2016	2017	2018	2019	2020	2019-20 Change	% Change
Emergency Shelter (ES)	2,276	2,248	2,835	2,147	2,062	-85	-4%
Safe Haven (SH)	--	--	--	5	11	6	120%
Transitional Housing (TH)	960	846	582	545	527	-18	-3%
Permanent Supportive Housing (PSH)	6,627	6,982	7,059	7,151	7,268	117	2%
Rapid Re-Housing (RRH)	639	820	968	1,020	1,360	340	33%

Award Summary

	2016	2017	2018	2019	2020	2019-20 Change	% Change
Continuum of Care (CoC)	\$44,583,760	\$45,869,536	\$49,020,640	\$57,347,545	\$60,659,441	\$3,311,896	6%
Emergency Solutions Grants (ESG)	\$3,204,771	\$3,193,473	\$3,201,477	\$3,327,057	\$3,476,608	\$149,551	4%
Youth Homelessness Demonstration Program (YHDP)	\$6,552,904	--	\$3,013,674	--	--	--	--