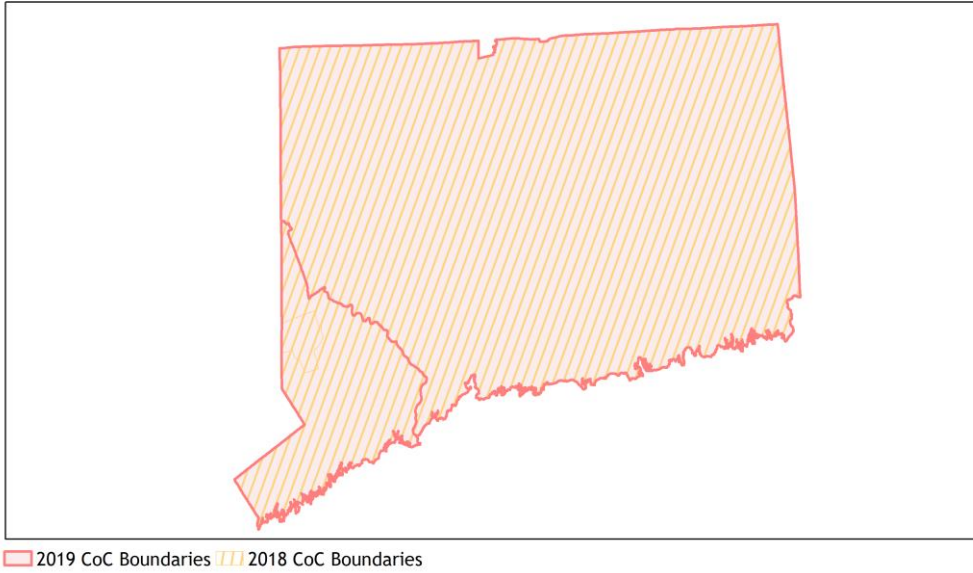
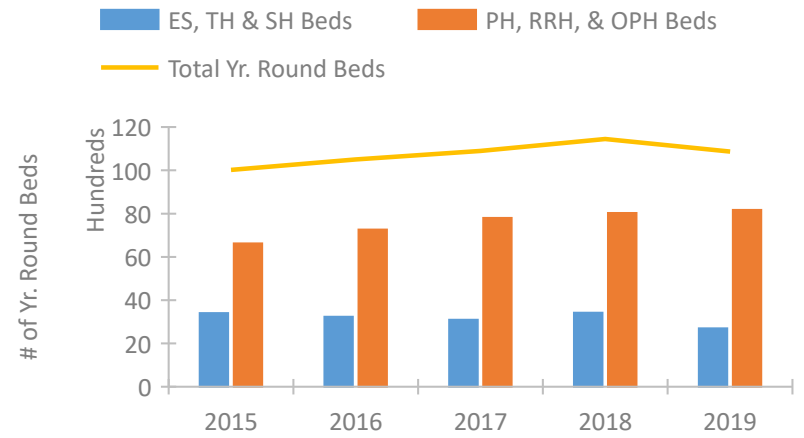


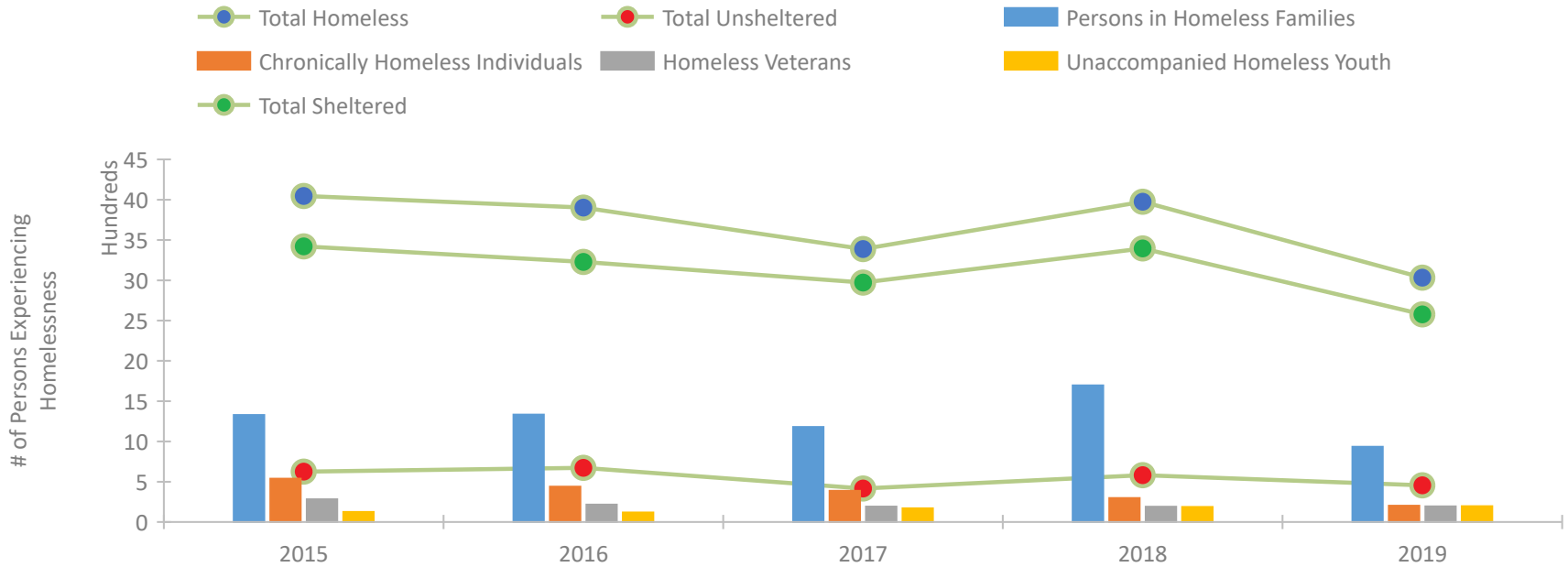
Connecticut Continuum of Care Performance Profile



Housing Inventory Count by Program Type

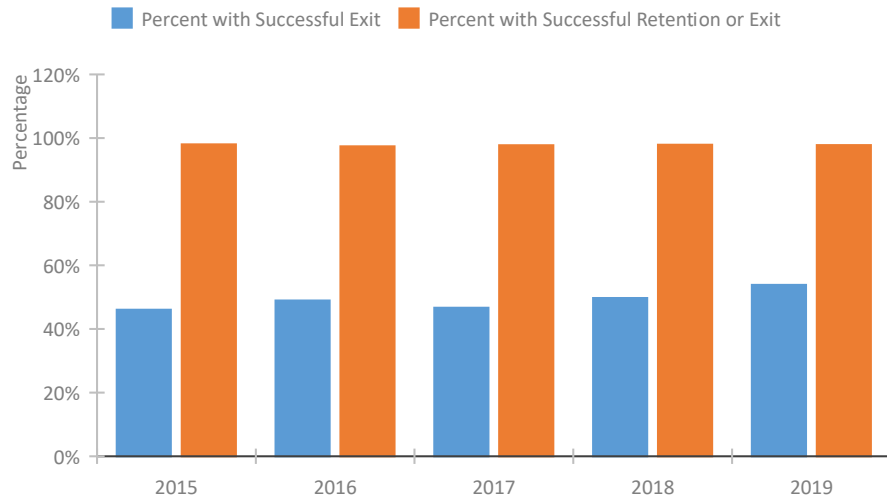


Homeless Population – Point-in-Time (PIT) Count

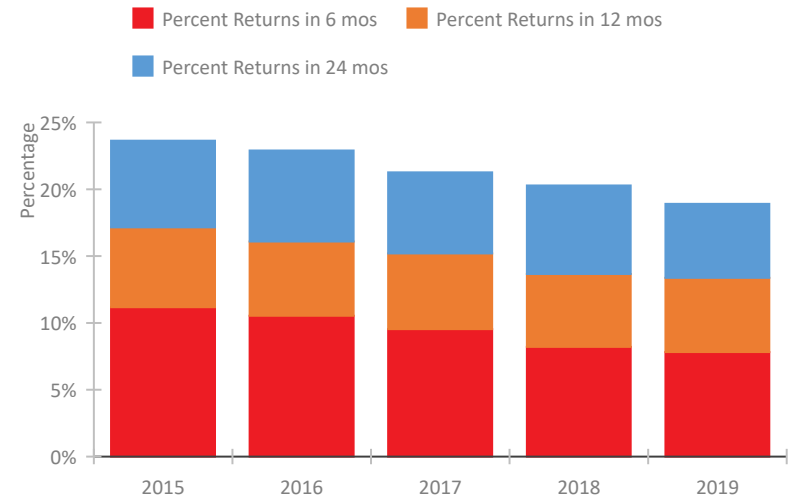


Connecticut Continuum of Care Performance Profile

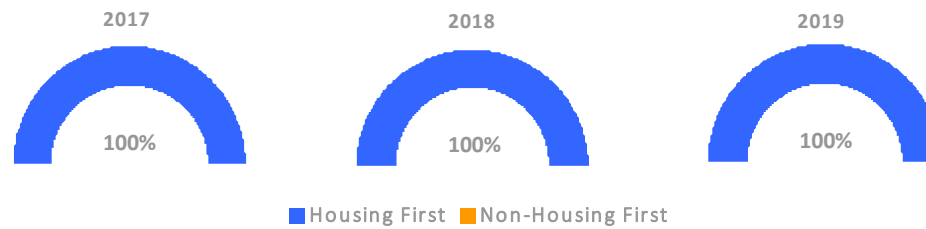
Exits to Permanent Housing by Program Type



Returns to Homelessness Over Time



Proportion of Housing First Projects by Year



Number of Projects by Year

	2017	2018	2019
Housing First Projects	142	143	141
Non-Housing First Projects	0	0	0

Data Summary: Connecticut

Point-In-Time Count Summary

	2015	2016	2017	2018	2019	2018-19 Change	% Change
Number of Sheltered Persons in Families	1,297	1,326	1,176	1,696	929	-767	-45%
Number of Unsheltered Persons in Families	31	6	4	0	4	4	100%
Number of Sheltered Individuals	2,124	1,903	1,796	1,699	1,648	-51	-3%
Number of Unsheltered Individuals	595	667	412	581	452	-129	-22%
Total Homeless Persons	4,047	3,902	3,388	3,976	3,033	-943	-24%
Number of Sheltered Families	445	447	391	553	303	-250	-45%
Number of Unsheltered Families	11	2	1	0	2	2	100%
Number of Total Families	456	449	392	553	305	-248	-45%
Sheltered Chronically Homeless Individuals	240	254	240	195	129	-66	-34%
Unsheltered Chronically Homeless Individuals	298	185	147	103	73	-30	-29%
Total Chronically Homeless Individuals	538	439	387	298	202	-96	-32%
Sheltered Veterans	241	173	177	177	182	5	3%
Unsheltered Veterans	41	43	14	13	13	0	0%
Total Veterans	282	216	191	190	195	5	3%
Sheltered Unaccompanied Youth (up to 24)	92	97	106	118	124	6	5%
Unsheltered Unaccompanied Youth (up to 24)	32	22	64	69	72	3	4%
Total Unaccompanied Youth (up to 24)	124	119	170	187	196	9	5%

System Performance Measures Summary

	2015	2016	2017	2018	2019	2018-19 Change	% Change
Rate People Return to Homelessness in 6 Months	11.2%	10.5%	9.5%	8.2%	7.8%	-0.4%	N/A
Number of People who are Homeless for the First Time	7,207	6,835	5,607	4,967	4,855	-112	-2.3%
Rate People Exit from ES, SH, TH, and RRH to PH	46.0%	48.9%	46.7%	49.7%	53.9%	4.1%	N/A
Rate People in PSH and OPH Retain or Exit to PH	98.0%	97.4%	97.7%	97.9%	97.8%	-0.1%	N/A

Housing Inventory Count Summary

	2015	2016	2017	2018	2019	2018-19 Change	% Change
Emergency Shelter (ES)	2,295	2,276	2,248	2,835	2,147	-688	-24%
Safe Haven (SH)	--	--	--	--	5	--	--
Transitional Housing (TH)	1,104	960	846	582	545	-37	-6%
Permanent Supportive Housing (PSH)	6,216	6,627	6,982	7,059	7,151	92	1%
Rapid Re-Housing (RRH)	289	639	820	968	1,020	52	5%

Award Summary

	2015	2016	2017	2018	2019	2018-19 Change	% Change
Continuum of Care (CoC)	\$43,661,777	\$44,583,760	\$45,869,536	\$49,020,640	\$57,347,545	\$8,326,905	17%
Emergency Solutions Grants (ESG)	\$3,204,518	\$3,204,771	\$3,193,473	\$3,201,477	\$3,327,057	\$125,580	4%
Youth Homelessness Demonstration Program (YHDP)	N/A	\$6,552,904	--	\$3,013,674	--	--	--