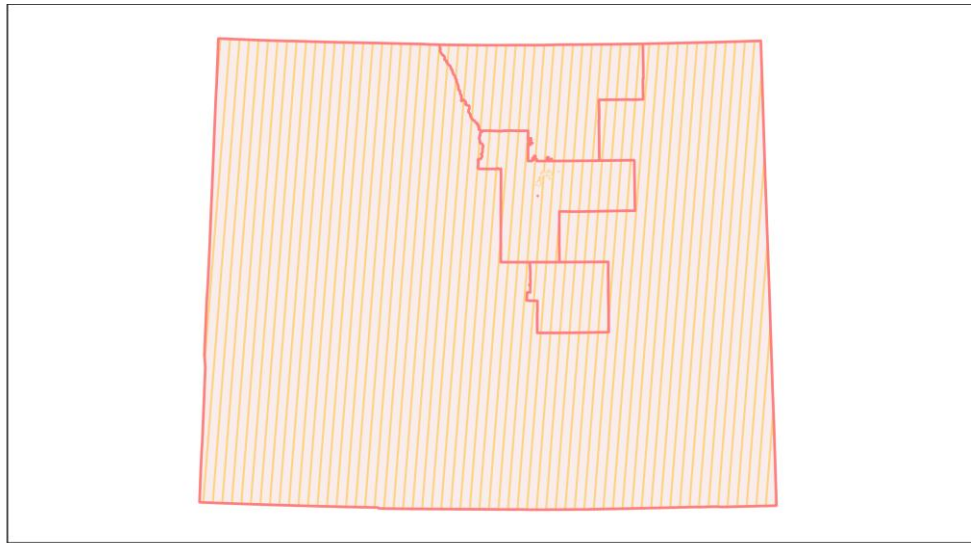
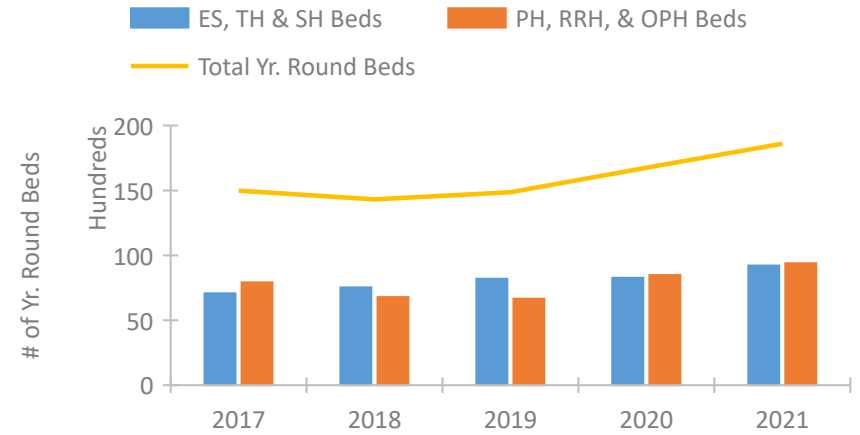


Colorado Continuum of Care Performance Profile

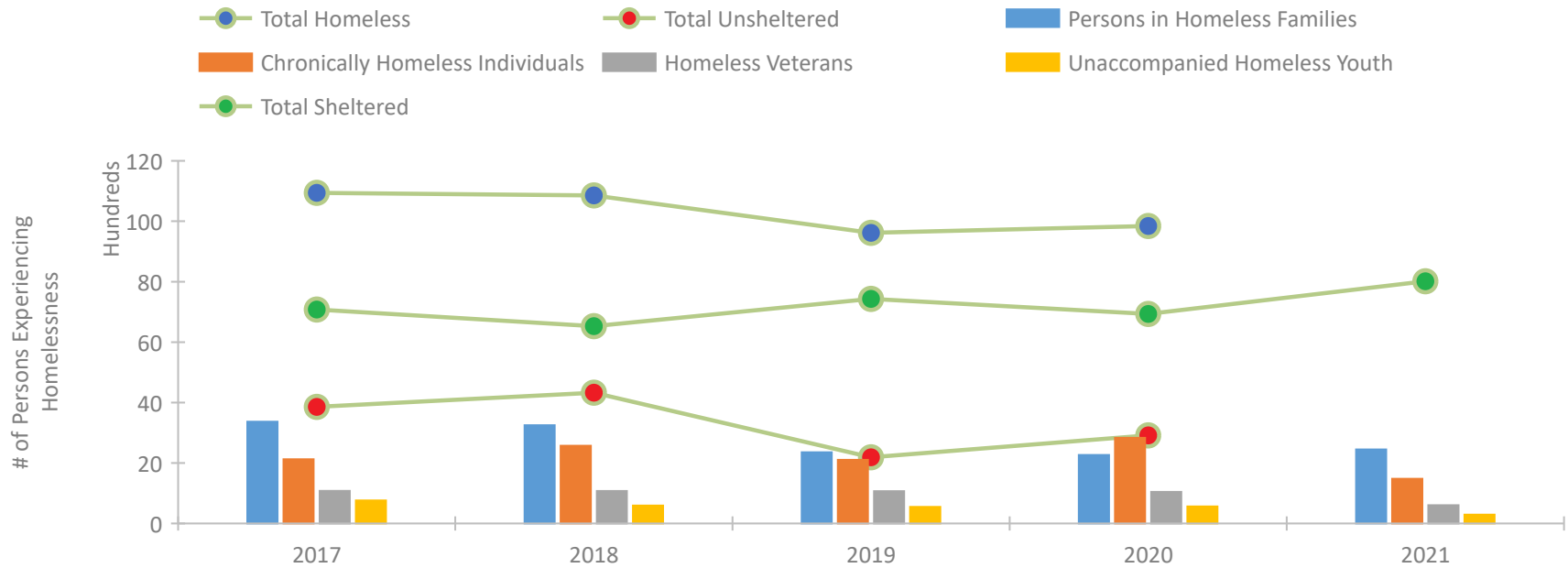


2021 CoC Boundaries 2020 CoC Boundaries

Housing Inventory Count by Program Type



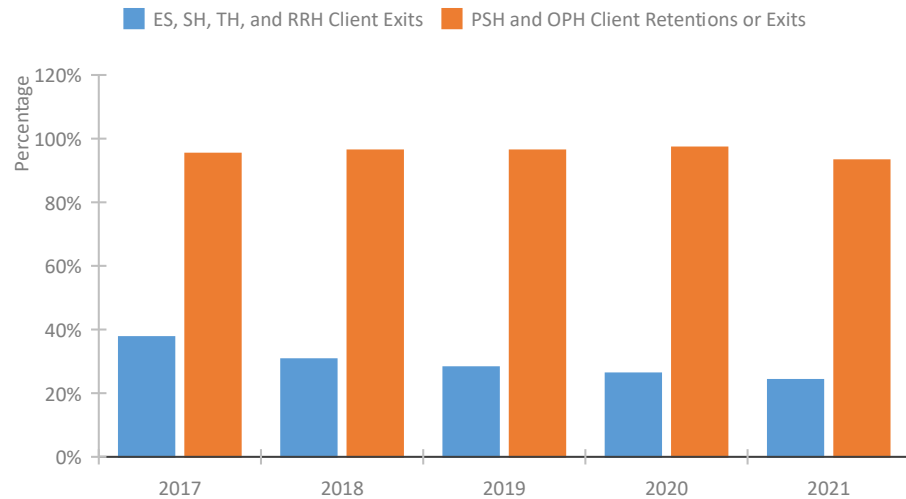
Homeless Population – Point-in-Time (PIT) Count*



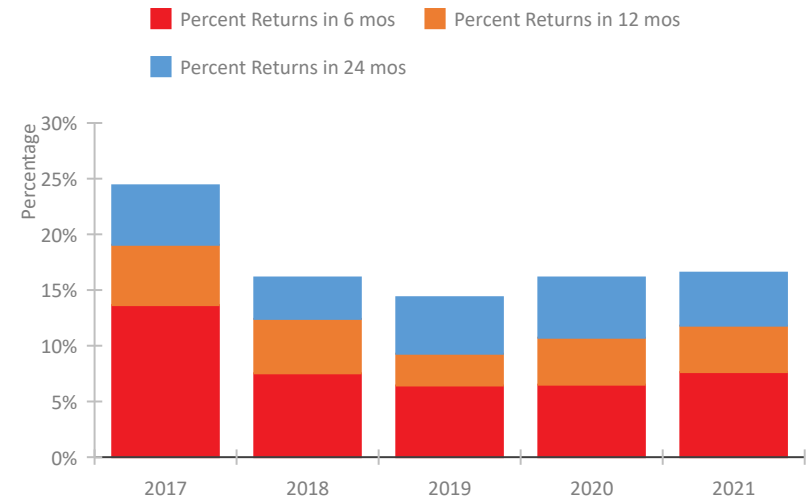
*In 2021, HUD gave communities the option to cancel or modify the unsheltered survey portion of their counts based on the potential risk of COVID-19 transmission associated with conducting an in-person survey. As a result, HUD has excluded the unsheltered population sub-totals and all unsheltered sub-population data for this reporting period. The user is cautioned that the unsheltered and total homeless counts reported here may be missing data.

Colorado Continuum of Care Performance Profile

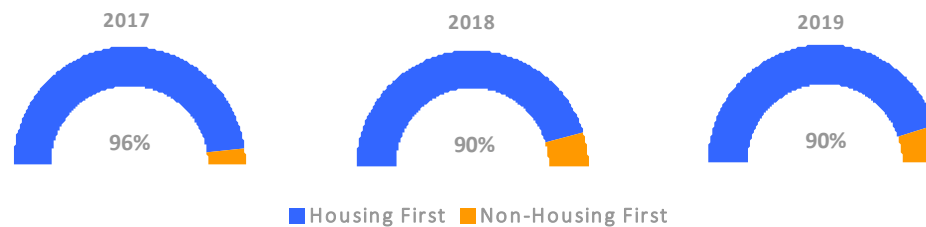
Exits to Permanent Housing by Program Type



Returns to Homelessness Over Time



Proportion of Housing First Projects by Year†



Number of Projects by Year

	2017	2018	2019
Housing First Projects	64	65	52
Non-Housing First Projects	3	7	6

†2021 Data unavailable at the time of report publication. In 2020 HUD awarded renewal projects noncompetitively, therefore no new data was collected and Housing First data remains the same from 2019 to 2020.

Data Summary: Colorado

Point-In-Time Count Summary*

	2017	2018	2019	2020	2021	2020-21 Change	% Change
Number of Sheltered Persons in Families	2,362	2,226	2,203	2,103	2,447	344	16%
Number of Unsheltered Persons in Families	1,007	1,024	153	164	0	-164	-100%
Number of Sheltered Individuals	4,719	4,302	5,228	4,830	5,569	739	15%
Number of Unsheltered Individuals	2,852	3,305	2,035	2,749	--	--	--
Total Homeless Persons	10,940	10,857	9,619	9,846	8,016	-1,830	-19%
Number of Sheltered Families	702	689	674	616	730	114	19%
Number of Unsheltered Families	291	301	45	49	--	--	--
Number of Total Families	993	990	719	665	730	65	10%
Sheltered Chronically Homeless Individuals	914	1,099	1,211	1,247	1,478	231	19%
Unsheltered Chronically Homeless Individuals	1,212	1,472	895	1,587	--	--	--
Total Chronically Homeless Individuals	2,126	2,571	2,106	2,834	1,478	-1,356	-48%
Sheltered Veterans	743	657	792	696	603	-93	-13%
Unsheltered Veterans	335	416	276	348	--	--	--
Total Veterans	1,078	1,073	1,068	1,044	603	-441	-42%
Sheltered Unaccompanied Youth (up to 24)	428	274	358	333	293	-40	-12%
Unsheltered Unaccompanied Youth (up to 24)	335	319	187	229	--	--	--
Total Unaccompanied Youth (up to 24)	763	593	545	562	293	-269	-48%

System Performance Measures Summary

	2017	2018	2019	2020	2021	2020-21 Change	% Change
Rate People Return to Homelessness in 6 Months	13.6%	7.5%	6.4%	6.5%	7.6%	1.1%	N/A
Number of People who are Homeless for the First Time	13,743	11,118	15,894	11,875	16,885	5,010	42.2%
Rate People Exit from ES, SH, TH, and RRH to PH	37.6%	30.7%	28.1%	26.2%	24.2%	-2.1%	N/A
Rate People in PSH and OPH Retain or Exit to PH	95.2%	96.3%	96.3%	97.2%	93.1%	-4.1%	N/A

Housing Inventory Count Summary

	2017	2018	2019	2020	2021	2020-21 Change	% Change
Emergency Shelter (ES)	3,761	4,425	4,796	5,073	6,221	1,148	23%
Safe Haven (SH)	25	25	63	63	53	-10	-16%
Transitional Housing (TH)	3,285	3,082	3,337	3,138	2,939	-199	-6%
Permanent Supportive Housing (PSH)	6,027	4,840	4,862	5,132	5,894	762	15%
Rapid Re-Housing (RRH)	1,625	1,643	1,137	1,834	1,727	-107	-6%
Other Permanent Housing (OPH)	267	304	662	1,516	1,768	252	17%

Award Summary

	2017	2018	2019	2020	2021	2020-21 Change	% Change
Continuum of Care (CoC)	\$30,593,296	\$32,682,646	\$33,592,560	\$35,299,541	\$36,723,466	\$1,423,925	4%
Emergency Solutions Grants (ESG)	\$3,469,984	\$3,020,183	\$3,122,154	\$3,240,489	\$3,231,499	(\$8,990)	0%
Youth Homelessness Demonstration Program (YHDP)	--	--	--	--	\$2,975,969	--	--

*In 2021, HUD gave communities the option to cancel or modify the unsheltered survey portion of their counts based on the potential risk of COVID-19 transmission associated with conducting an in-person survey. As a result, HUD has excluded the unsheltered population sub-totals and all unsheltered sub-population data for this reporting period. The user is cautioned that the unsheltered and total homeless counts reported here may be missing data.