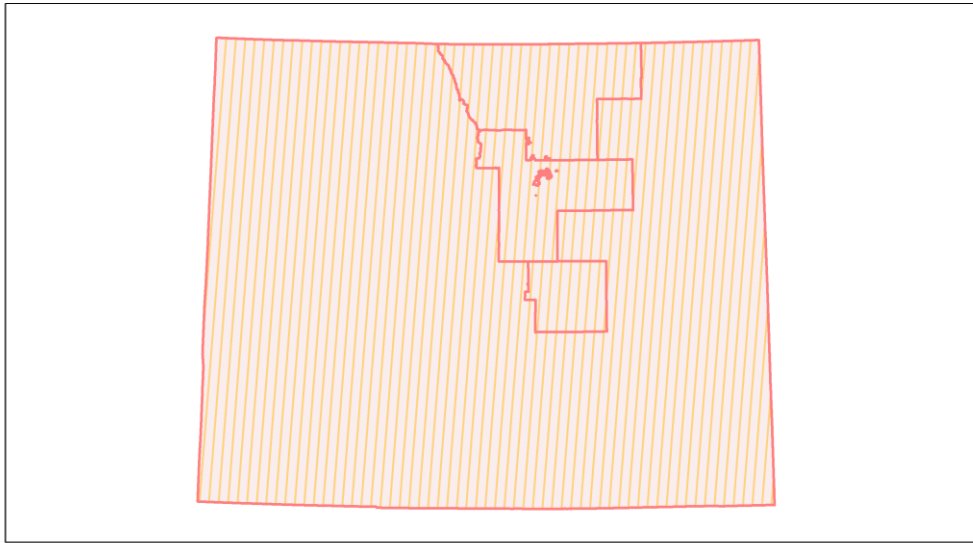
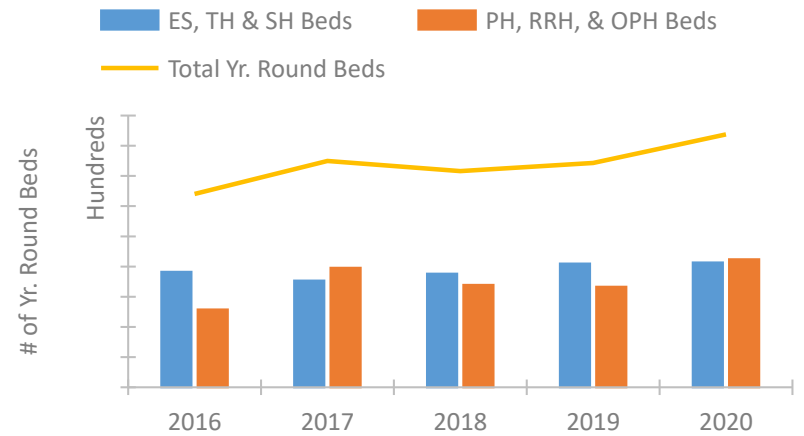


Colorado Continuum of Care Performance Profile

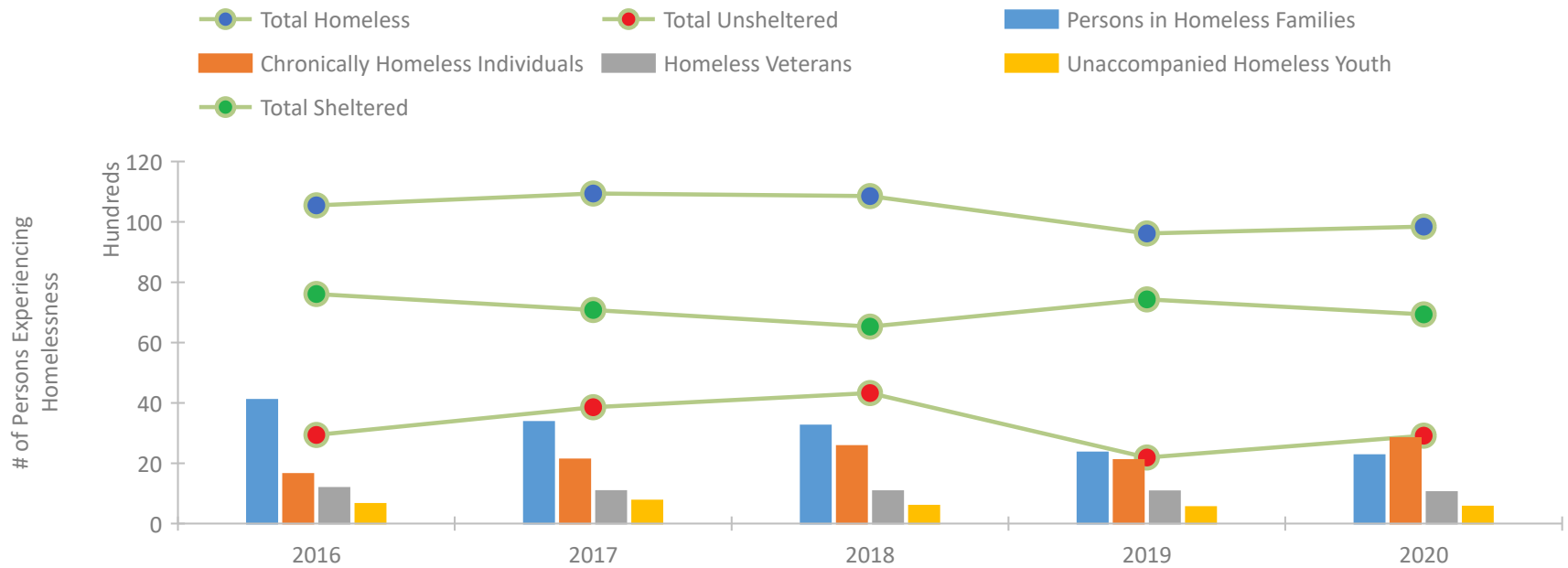


2020 CoC Boundaries 2019 CoC Boundaries

Housing Inventory Count by Program Type

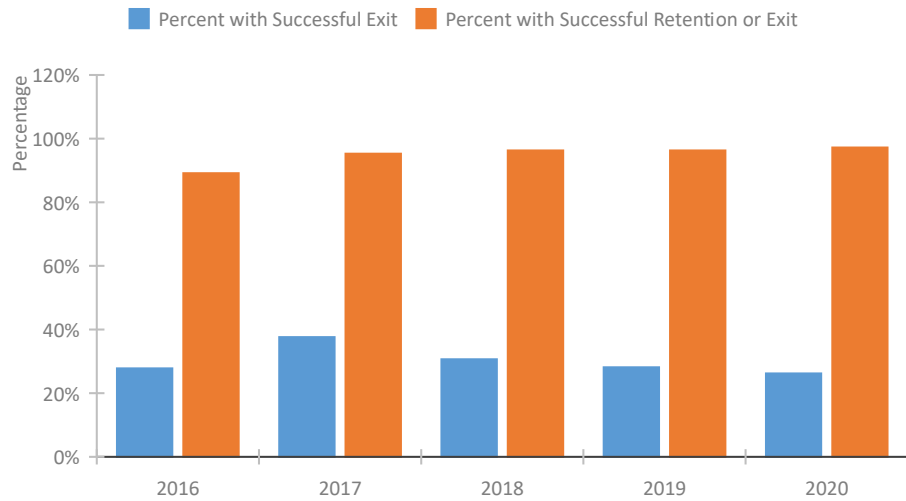


Homeless Population – Point-in-Time (PIT) Count

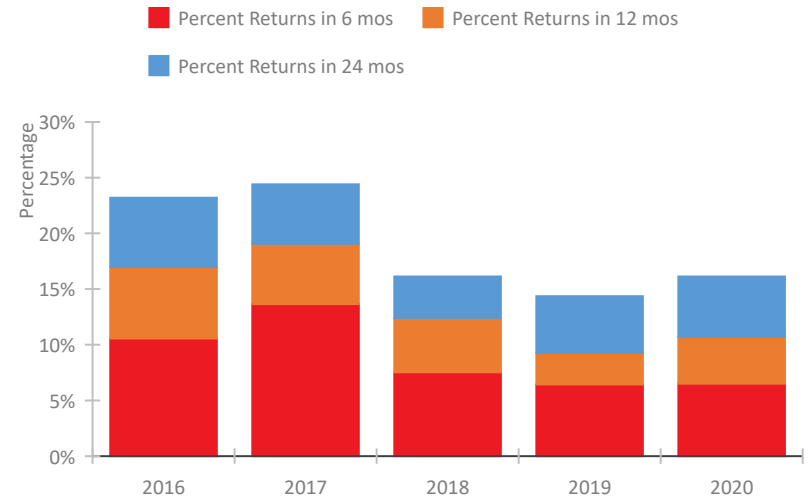


Colorado Continuum of Care Performance Profile

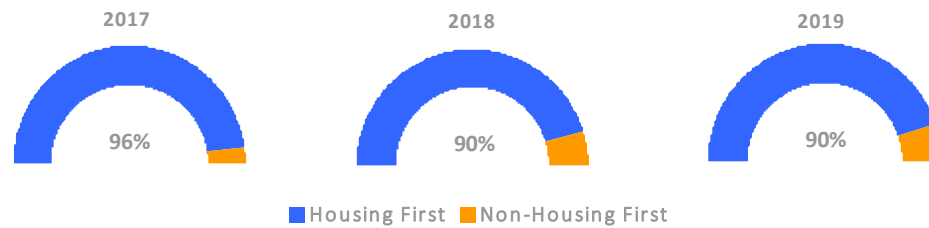
Exits to Permanent Housing by Program Type



Returns to Homelessness Over Time



Proportion of Housing First Projects by Year*



Number of Projects by Year			
	2017	2018	2019
Housing First Projects	64	65	52
Non-Housing First Projects	3	7	6

*In 2020 HUD awarded renewal projects noncompetitively, therefore no new data was collected and Housing First data remains the same from 2019 to 2020.

Data Summary: Colorado

Point-In-Time Count Summary

	2016	2017	2018	2019	2020	2019-20 Change	% Change
Number of Sheltered Persons in Families	3,259	2,362	2,226	2,203	2,103	-100	-5%
Number of Unsheltered Persons in Families	841	1,007	1,024	153	164	11	7%
Number of Sheltered Individuals	4,352	4,719	4,302	5,228	4,830	-398	-8%
Number of Unsheltered Individuals	2,098	2,852	3,305	2,035	2,749	714	35%
Total Homeless Persons	10,550	10,940	10,857	9,619	9,846	227	2%
Number of Sheltered Families	959	702	689	674	616	-58	-9%
Number of Unsheltered Families	241	291	301	45	49	4	9%
Number of Total Families	1,200	993	990	719	665	-54	-8%
Sheltered Chronically Homeless Individuals	883	914	1,099	1,211	1,247	36	3%
Unsheltered Chronically Homeless Individuals	759	1,212	1,472	895	1,587	692	77%
Total Chronically Homeless Individuals	1,642	2,126	2,571	2,106	2,834	728	35%
Sheltered Veterans	906	743	657	792	696	-96	-12%
Unsheltered Veterans	275	335	416	276	348	72	26%
Total Veterans	1,181	1,078	1,073	1,068	1,044	-24	-2%
Sheltered Unaccompanied Youth (up to 24)	383	428	274	358	333	-25	-7%
Unsheltered Unaccompanied Youth (up to 24)	270	335	319	187	229	42	22%
Total Unaccompanied Youth (up to 24)	653	763	593	545	562	17	3%

System Performance Measures Summary

	2016	2017	2018	2019	2020	2019-20 Change	% Change
Rate People Return to Homelessness in 6 Months	10.6%	13.6%	7.5%	6.4%	6.5%	0.1%	N/A
Number of People who are Homeless for the First Time	14,897	13,743	11,118	15,894	11,875	-4,019	-25.3%
Rate People Exit from ES, SH, TH, and RRH to PH	27.8%	37.6%	30.7%	28.1%	26.2%	-1.9%	N/A
Rate People in PSH and OPH Retain or Exit to PH	89.1%	95.2%	96.3%	96.3%	97.2%	0.9%	N/A

Housing Inventory Count Summary

	2016	2017	2018	2019	2020	2019-20 Change	% Change
Emergency Shelter (ES)	3,541	3,761	4,425	4,796	5,073	277	6%
Safe Haven (SH)	67	25	25	63	63	0	-0%
Transitional Housing (TH)	4,048	3,285	3,082	3,337	3,138	-199	-6%
Permanent Supportive Housing (PSH)	3,975	6,027	4,840	4,862	5,132	270	6%
Rapid Re-Housing (RRH)	1,124	1,625	1,643	1,137	1,834	697	61%
Other Permanent Housing (OPH)	54	267	304	662	1,516	854	129%

Award Summary

	2016	2017	2018	2019	2020	2019-20 Change	% Change
Continuum of Care (CoC)	\$29,571,287	\$30,593,296	\$32,682,646	\$33,592,560	\$35,299,541	\$1,706,981	5%
Emergency Solutions Grants (ESG)	\$3,038,667	\$3,469,984	\$3,020,183	\$3,122,154	\$3,240,489	\$118,335	4%