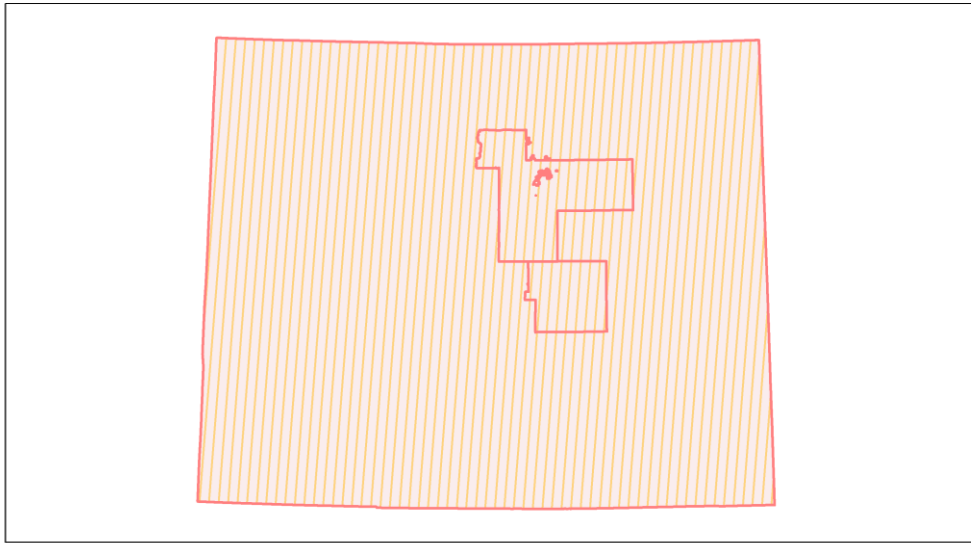
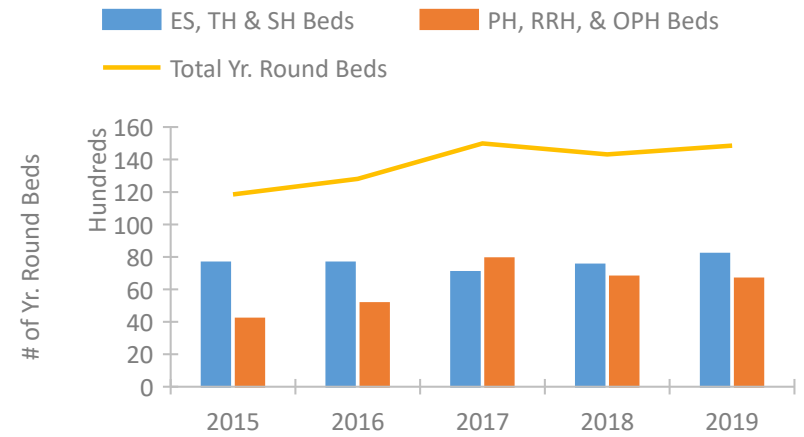


## Colorado Continuum of Care Performance Profile

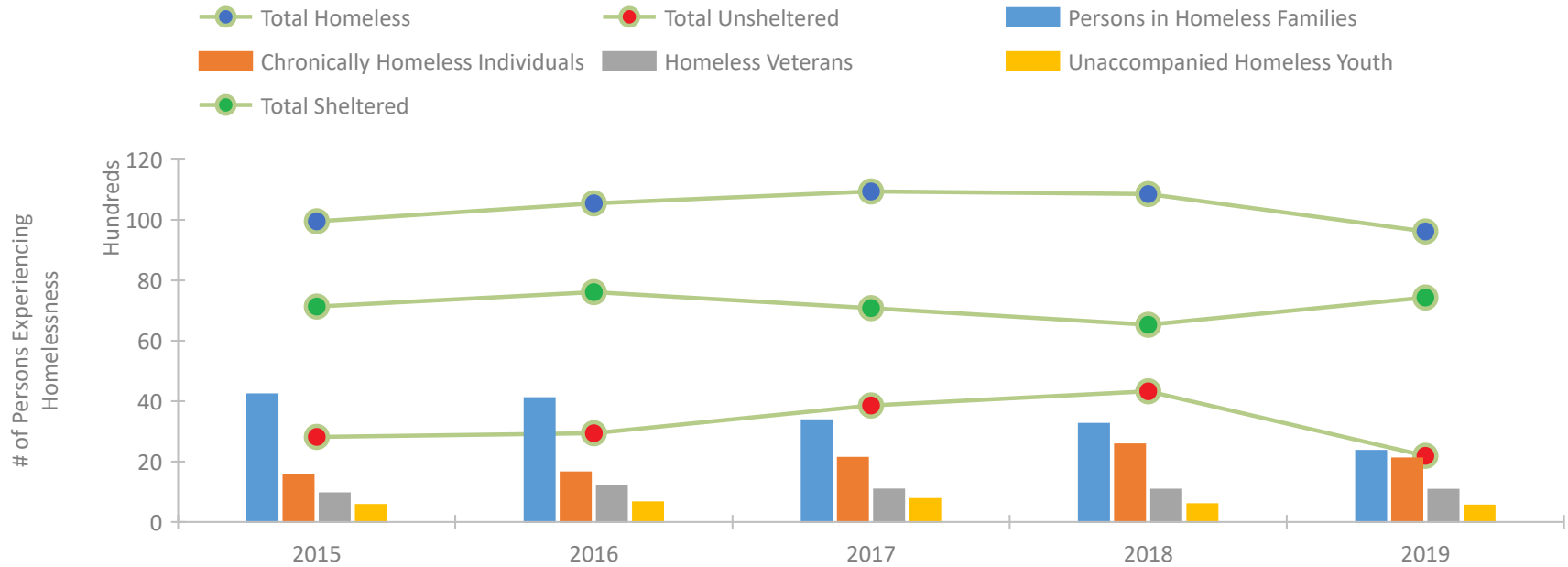


2019 CoC Boundaries 2018 CoC Boundaries

## Housing Inventory Count by Program Type

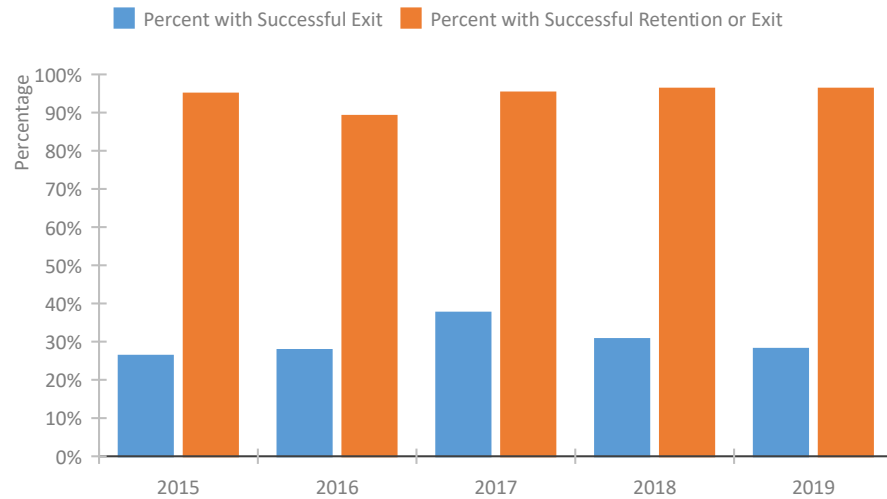


## Homeless Population – Point-in-Time (PIT) Count

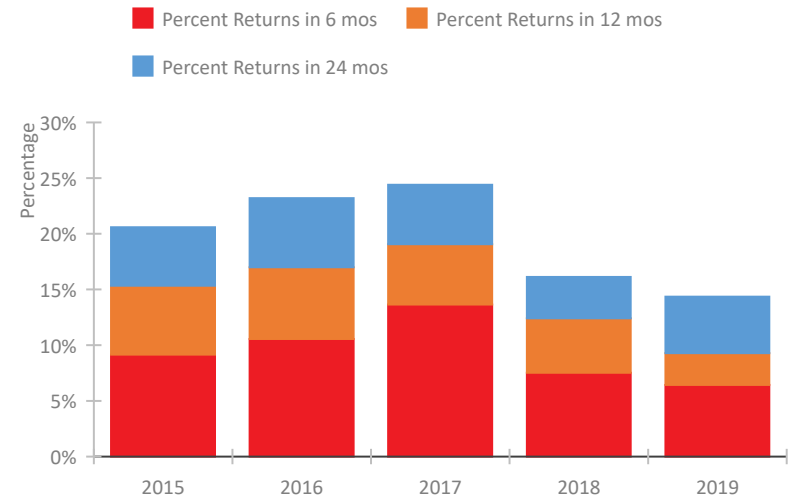


## Colorado Continuum of Care Performance Profile

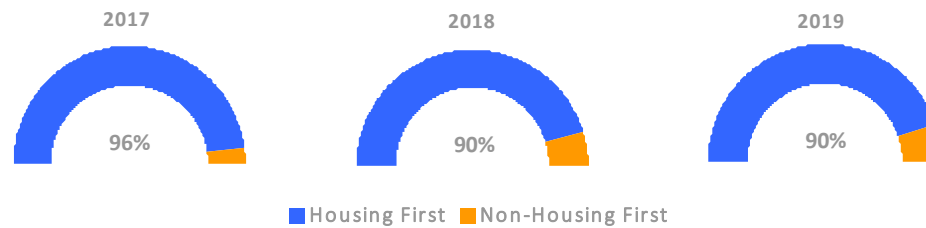
### Exits to Permanent Housing by Program Type



### Returns to Homelessness Over Time



### Proportion of Housing First Projects by Year



### Number of Projects by Year

	2017	2018	2019
Housing First Projects	64	65	52
Non-Housing First Projects	3	7	6

## Data Summary: Colorado

### Point-In-Time Count Summary

	2015	2016	2017	2018	2019	2018-19 Change	% Change
Number of Sheltered Persons in Families	3,395	3,259	2,362	2,226	2,203	-23	-1%
Number of Unsheltered Persons in Families	829	841	1,007	1,024	153	-871	-85%
Number of Sheltered Individuals	3,739	4,352	4,719	4,302	5,228	926	22%
Number of Unsheltered Individuals	1,990	2,098	2,852	3,305	2,035	-1,270	-38%
<b>Total Homeless Persons</b>	<b>9,953</b>	<b>10,550</b>	<b>10,940</b>	<b>10,857</b>	<b>9,619</b>	<b>-1,238</b>	<b>-11%</b>
Number of Sheltered Families	996	959	702	689	674	-15	-2%
Number of Unsheltered Families	246	241	291	301	45	-256	-85%
<b>Number of Total Families</b>	<b>1,242</b>	<b>1,200</b>	<b>993</b>	<b>990</b>	<b>719</b>	<b>-271</b>	<b>-27%</b>
Sheltered Chronically Homeless Individuals	754	883	914	1,099	1,211	112	10%
Unsheltered Chronically Homeless Individuals	818	759	1,212	1,472	895	-577	-39%
<b>Total Chronically Homeless Individuals</b>	<b>1,572</b>	<b>1,642</b>	<b>2,126</b>	<b>2,571</b>	<b>2,106</b>	<b>-465</b>	<b>-18%</b>
Sheltered Veterans	644	906	743	657	792	135	21%
Unsheltered Veterans	306	275	335	416	276	-140	-34%
<b>Total Veterans</b>	<b>950</b>	<b>1,181</b>	<b>1,078</b>	<b>1,073</b>	<b>1,068</b>	<b>-5</b>	<b>0%</b>
Sheltered Unaccompanied Youth (up to 24)	360	383	428	274	358	84	31%
Unsheltered Unaccompanied Youth (up to 24)	206	270	335	319	187	-132	-41%
<b>Total Unaccompanied Youth (up to 24)</b>	<b>566</b>	<b>653</b>	<b>763</b>	<b>593</b>	<b>545</b>	<b>-48</b>	<b>-8%</b>

### System Performance Measures Summary

	2015	2016	2017	2018	2019	2018-19 Change	% Change
Rate People Return to Homelessness in 6 Months	9.1%	10.6%	13.6%	7.5%	6.4%	-1.1%	N/A
Number of People who are Homeless for the First Time	15,238	14,897	13,743	11,118	15,894	4,776	43%
Rate People Exit from ES, SH, TH, and RRH to PH	26.3%	27.8%	37.6%	30.7%	28.1%	-2.5%	N/A
Rate People in PSH and OPH Retain or Exit to PH	95.0%	89.1%	95.2%	96.3%	96.3%	0%	N/A

### Housing Inventory Count Summary

	2015	2016	2017	2018	2019	2018-19 Change	% Change
Emergency Shelter (ES)	3,263	3,541	3,761	4,425	4,796	371	8%
Safe Haven (SH)	25	67	25	25	63	38	152%
Transitional Housing (TH)	4,365	4,048	3,285	3,082	3,337	255	8%
Permanent Supportive Housing (PSH)	3,334	3,975	6,027	4,840	4,862	22	0%
Rapid Re-Housing (RRH)	822	1,124	1,625	1,643	1,137	-506	-31%
Other Permanent Housing (OPH)	10	54	267	304	662	358	118%

### Award Summary

	2015	2016	2017	2018	2019	2018-19 Change	% Change
<b>Continuum of Care (CoC)</b>	\$29,714,758	\$29,571,287	\$30,593,296	\$32,682,646	\$33,592,560	\$909,914	3%
<b>Emergency Solutions Grants (ESG)</b>	\$3,035,790	\$3,038,667	\$3,469,984	\$3,020,183	\$3,122,154	\$101,971	3%