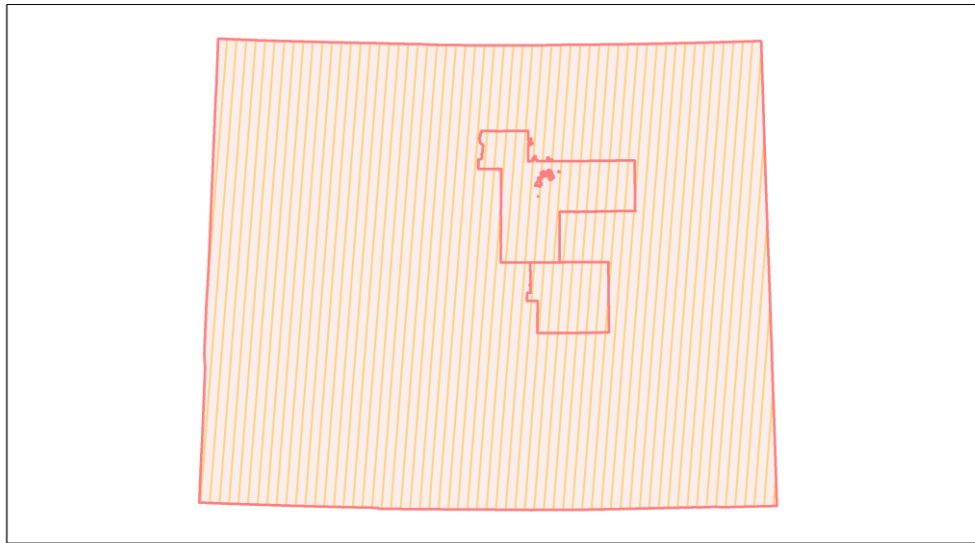
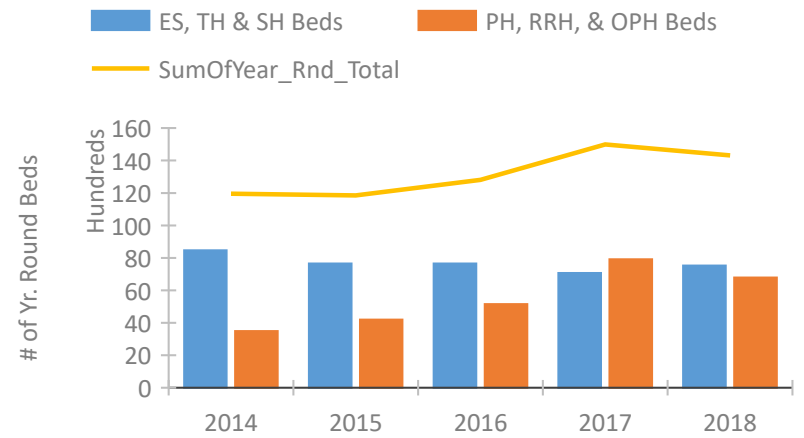


Colorado Continuum of Care Performance Profile

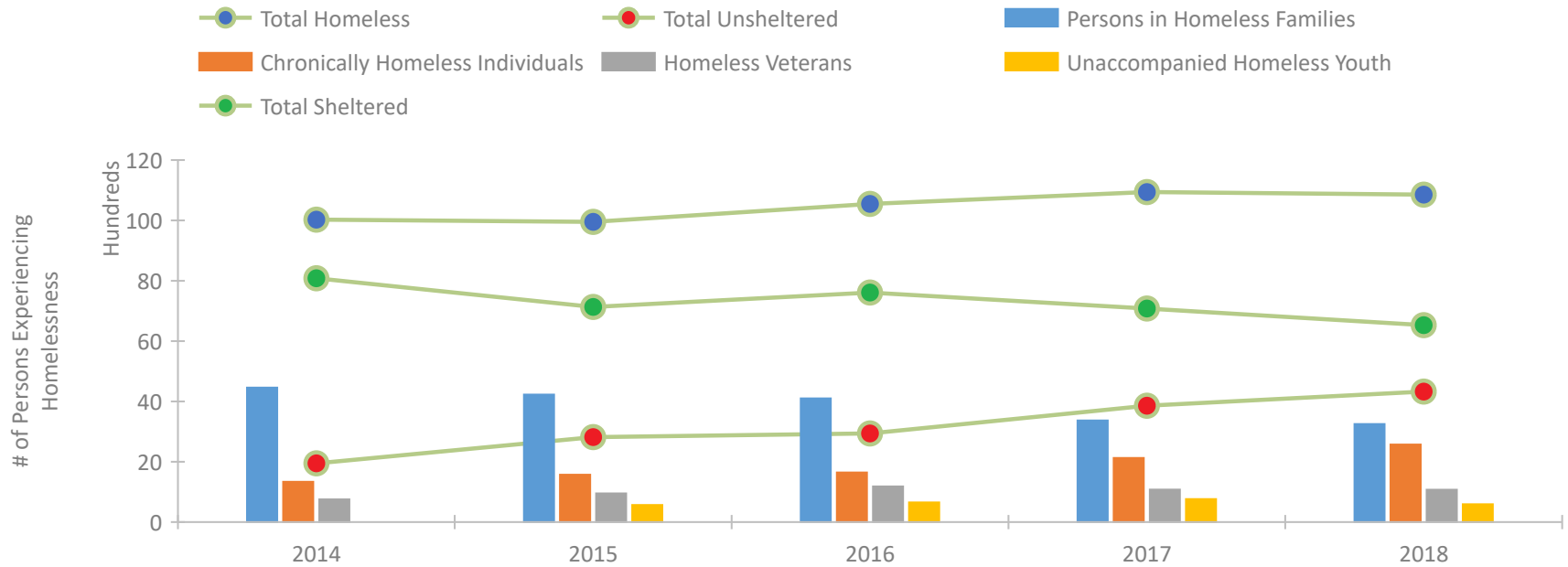


2018 CoC Boundaries 2017 CoC Boundaries

Housing Inventory Count by Program Type

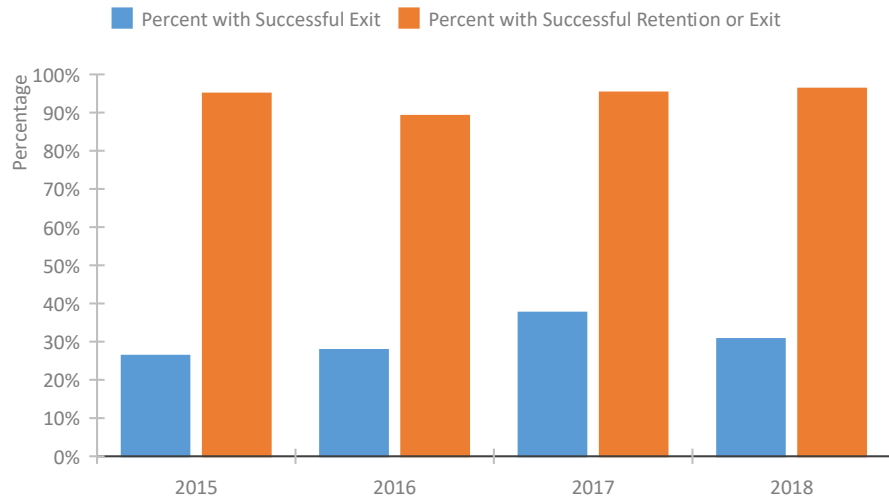


Homeless Population – Point-in-Time (PIT) Count

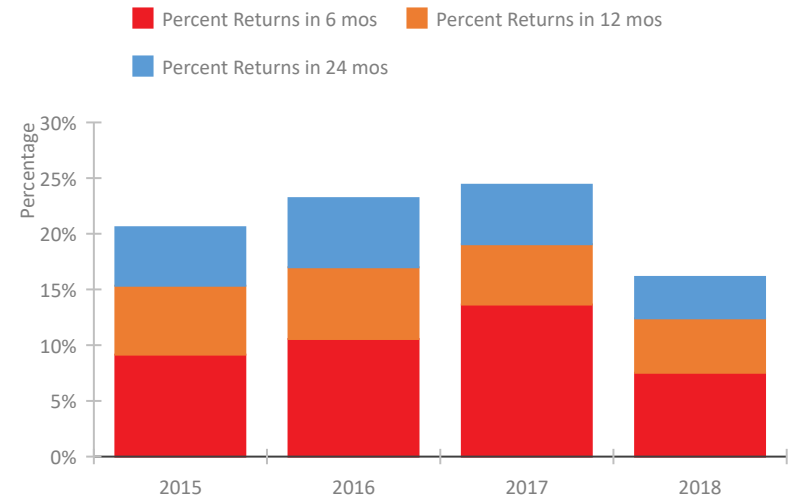


Colorado Continuum of Care Performance Profile

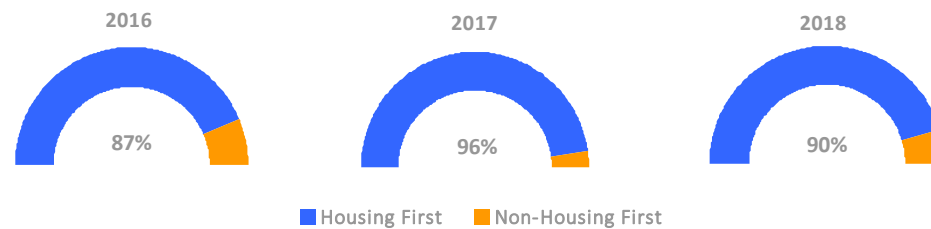
Exits to Permanent Housing by Program Type



Returns to Homelessness Over Time



Proportion of Housing First Projects by Year



Number of Projects by Year

	2016	2017	2018
Housing First Projects	67	64	65
Non-Housing First Projects	10	3	7

Data Summary: Colorado

Point-In-Time Count Summary

	2014	2015	2016	2017	2018	2017-18 Change	% Change
Number of Sheltered Persons in Families	4,048	3,395	3,259	2,362	2,226	-136	-6%
Number of Unsheltered Persons in Families	407	829	841	1,007	1,024	17	2%
Number of Sheltered Individuals	3,874	3,697	4,293	4,696	4,295	-401	-9%
Number of Unsheltered Individuals	1,531	1,981	2,084	2,830	3,290	460	16%
Total Homeless Persons	9,860	9,902	10,477	10,895	10,835	-60	-1%
Number of Sheltered Families	1,187	996	959	702	689	-13	-2%
Number of Unsheltered Families	130	246	241	291	301	10	3%
Number of Total Families	1,317	1,242	1,200	993	990	-3	0%
Sheltered Chronically Homeless Individuals	635	754	883	914	1,099	185	20%
Unsheltered Chronically Homeless Individuals	700	818	759	1,212	1,472	260	21%
Total Chronically Homeless Individuals	1,335	1,572	1,642	2,126	2,571	445	21%
Sheltered Veterans	528	644	906	743	657	-86	-12%
Unsheltered Veterans	225	306	275	335	416	81	24%
Total Veterans	753	950	1,181	1,078	1,073	-5	0%
Sheltered Unaccompanied Youth (up to 24)	--	360	383	428	274	-154	-36%
Unsheltered Unaccompanied Youth (up to 24)	--	206	270	335	319	-16	-5%
Total Unaccompanied Youth (up to 24)	--	566	653	763	593	-170	-22%

System Performance Measures Summary

	2014	2015	2016	2017	2018	2017-18 Change	% Change
Rate People Return to Homelessness in 6 Months	N/A	9.1%	10.6%	13.6%	7.5%	-6.1%	N/A
Number of People who are Homeless for the First Time	N/A	15,238	14,897	13,743	11,118	-2,625	-19.1%
Rate People Exit from ES, SH, TH, and RRH to PH	N/A	26.3%	27.8%	37.6%	30.7%	-6.9%	N/A
Rate People in PSH and OPH Retain or Exit to PH	N/A	95.0%	89.1%	95.2%	96.3%	1%	N/A

Housing Inventory Count Summary

	2014	2015	2016	2017	2018	2017-18 Change	% Change
Emergency Shelter (ES)	3,753	3,263	3,541	3,761	4,425	664	18%
Safe Haven (SH)	25	25	67	25	25	0	0%
Transitional Housing (TH)	4,688	4,365	4,048	3,285	3,082	-203	-6%
Permanent Supportive Housing (PSH)	3,091	3,334	3,975	6,027	4,840	-1,187	-20%
Rapid Re-Housing (RRH)	388	822	1,124	1,625	1,643	18	1%
Other Permanent Housing (OPH)	10	10	54	267	304	37	14%

Award Summary

	2014	2015	2016	2017	2018	2017-18 Change	% Change
Continuum of Care (CoC)	\$25,814,762	\$29,714,758	\$29,571,287	\$30,593,296	\$32,682,646	\$2,089,350	7%
Emergency Solutions Grants (ESG)	\$2,813,842	\$3,035,790	\$3,038,667	\$3,469,984	\$3,020,183	(\$449,801)	-13%