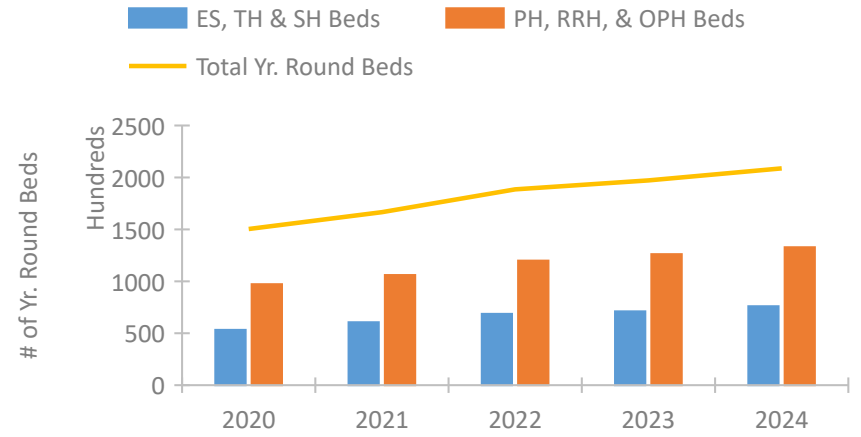


California Continuum of Care Performance Profile

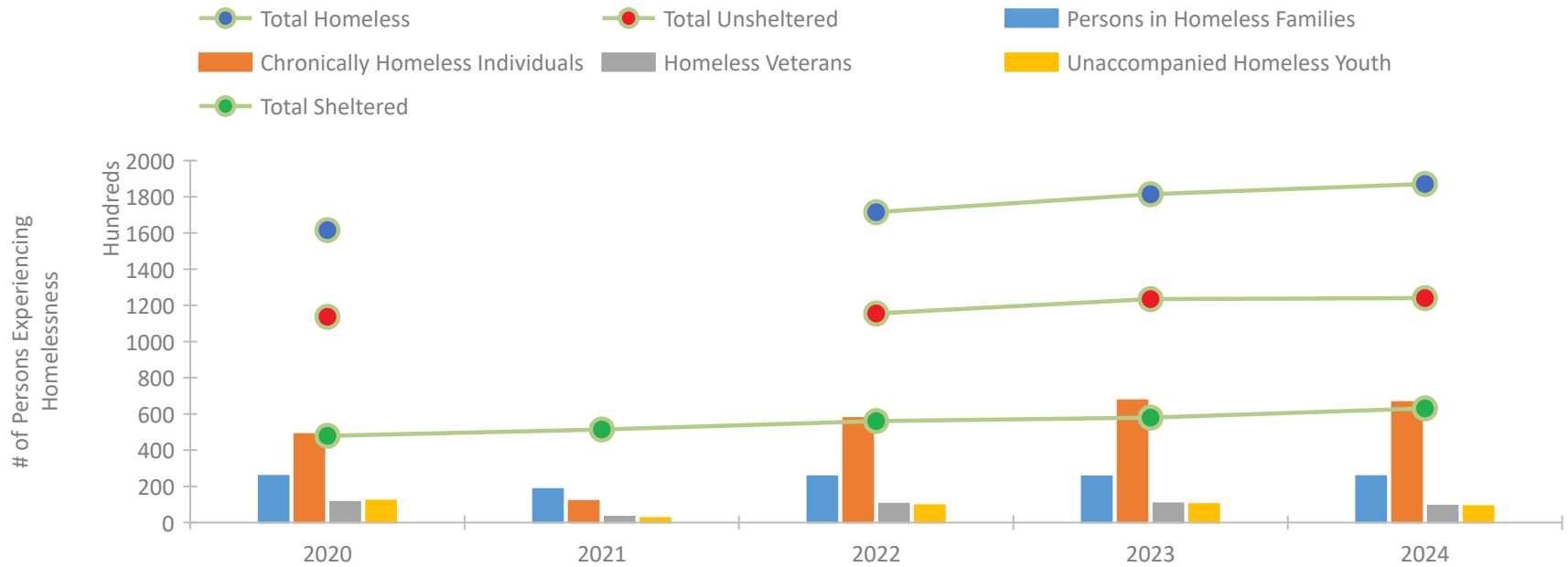


2024 CoC Boundaries 2023 CoC Boundaries

Housing Inventory Count by Program Type



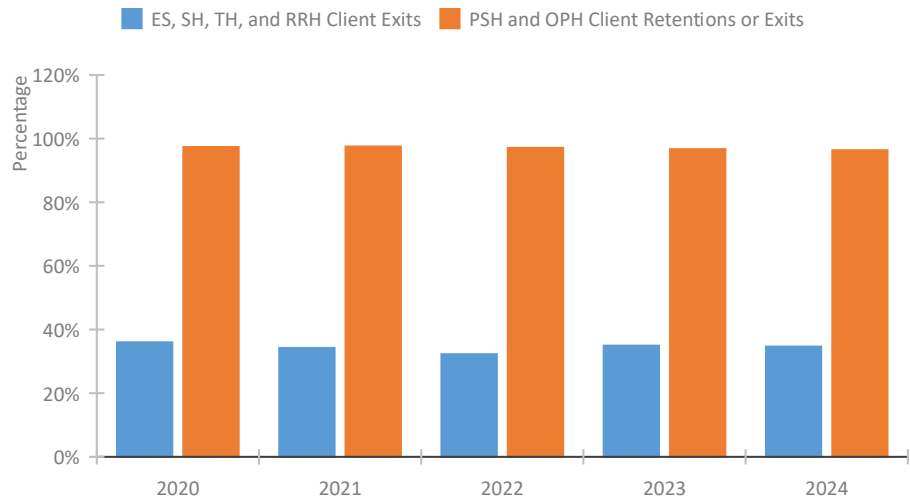
Homeless Population – Point-in-Time (PIT) Count*



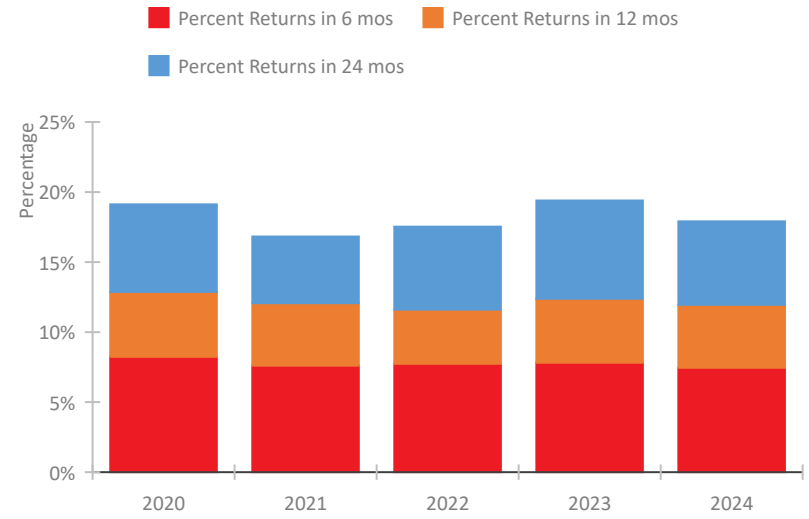
*In 2021, HUD gave communities the option to cancel or modify the unsheltered survey portion of their counts based on the potential risk of COVID-19 transmission associated with conducting an in-person survey. As a result, HUD has excluded the unsheltered population sub-totals and all unsheltered sub-population data for this reporting period. The user is cautioned that the unsheltered and total homeless counts reported here may be missing data.

California Continuum of Care Performance Profile

Exits to Permanent Housing by Program Type



Returns to Homelessness Over Time



Data Summary: California

Point-In-Time Count Summary*

	2020	2021	2022	2023	2024	2023-24 Change	% Change
Number of Sheltered Persons in Families	19,642	18,519	21,253	19,484	20,350	866	4%
Number of Unsheltered Persons in Families	6,135	--	4,285	5,999	5,289	-710	-12%
Number of Sheltered Individuals	28,246	32,910	34,777	38,492	42,760	4,268	11%
Number of Unsheltered Individuals	107,525	--	111,206	117,424	118,685	1,261	1%
Total Homeless Persons	161,548	51,429	171,521	181,399	187,084	5,685	3%
Number of Sheltered Families	6,252	5,915	6,807	6,208	6,475	267	4%
Number of Unsheltered Families	1,778	--	1,279	1,780	1,682	-98	-6%
Number of Total Families	8,030	5,915	8,086	7,988	8,157	169	2%
Sheltered Chronically Homeless Individuals	8,036	11,966	13,640	14,341	16,100	1,759	12%
Unsheltered Chronically Homeless Individuals	40,776	--	44,120	53,169	50,448	-2,721	-5%
Total Chronically Homeless Individuals	48,812	11,966	57,760	67,510	66,548	-962	-1%
Sheltered Veterans	3,405	3,212	3,003	3,153	2,900	-253	-8%
Unsheltered Veterans	7,996	--	7,392	7,436	6,410	-1,026	-14%
Total Veterans	11,401	3,212	10,395	10,589	9,310	-1,279	-12%
Sheltered Unaccompanied Youth (up to 24)	2,662	2,526	2,828	3,239	3,595	356	11%
Unsheltered Unaccompanied Youth (up to 24)	9,510	--	6,762	6,934	5,457	-1,477	-21%
Total Unaccompanied Youth (up to 24)	12,172	2,526	9,590	10,173	9,052	-1,121	-11%

System Performance Measures Summary

	2020	2021	2022	2023	2024	2023-24 Change	% Change
Rate People Return to Homelessness in 6 Months	8.2%	7.6%	7.7%	7.8%	7.5%	-0.4%	N/A
Number of People who are Homeless for the First Time	76,596	93,753	106,963	126,048	127,182	1,134	0.9%
Rate People Exit from ES, SH, TH, and RRH to PH	36.0%	34.2%	32.2%	34.9%	34.6%	-0.3%	N/A
Rate People in PSH and OPH Retain or Exit to PH	97.3%	97.5%	97.1%	96.7%	96.3%	-0.3%	N/A

Housing Inventory Count Summary

	2020	2021	2022	2023	2024	2023-24 Change	% Change
Emergency Shelter (ES)	38,241	45,229	52,839	54,790	61,387	6,597	12%
Safe Haven (SH)	264	553	634	665	473	-192	-29%
Transitional Housing (TH)	14,760	14,800	15,134	15,676	14,078	-1,598	-10%
Permanent Supportive Housing (PSH)	65,872	69,864	72,086	75,100	78,758	3,658	5%
Rapid Re-Housing (RRH)	22,611	25,137	29,487	28,766	28,039	-727	-3%
Other Permanent Housing (OPH)	8,707	11,044	18,377	22,228	26,059	3,831	17%

Award Summary

	2020	2021	2022	2023	2024	2023-24 Change	% Change
Continuum of Care (CoC)	\$490,802,967	\$509,247,505	\$525,839,973	\$594,015,826	\$683,837,939	\$89,822,113	15%
Emergency Solutions Grants (ESG)	\$34,388,295	\$34,101,641	\$33,752,469	\$33,477,830	\$33,227,579	(\$250,251)	-1%
Youth Homelessness Demonstration Program (YHDP)	\$16,759,615	\$11,676,859	\$7,487,462	\$16,143,054	--	--	--

*In 2021, HUD gave communities the option to cancel or modify the unsheltered survey portion of their counts based on the potential risk of COVID-19 transmission associated with conducting an in-person survey. As a result, HUD has excluded the unsheltered population sub-totals and all unsheltered sub-population data for this reporting period. The user is cautioned that the unsheltered and total homeless counts reported here may be missing data.