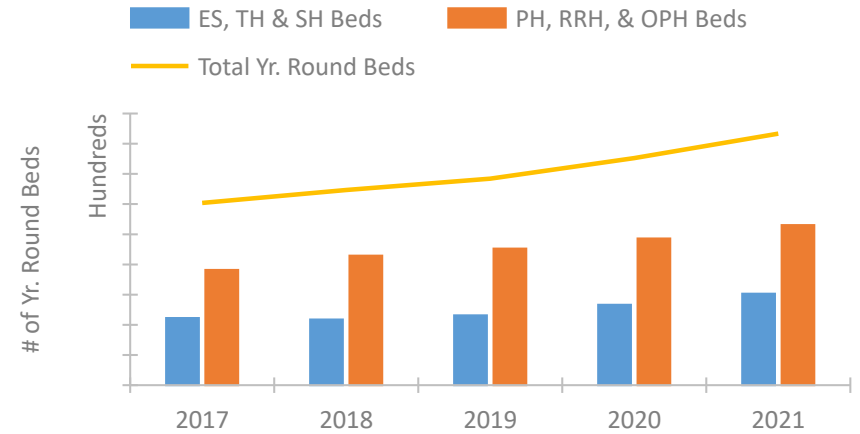


California Continuum of Care Performance Profile

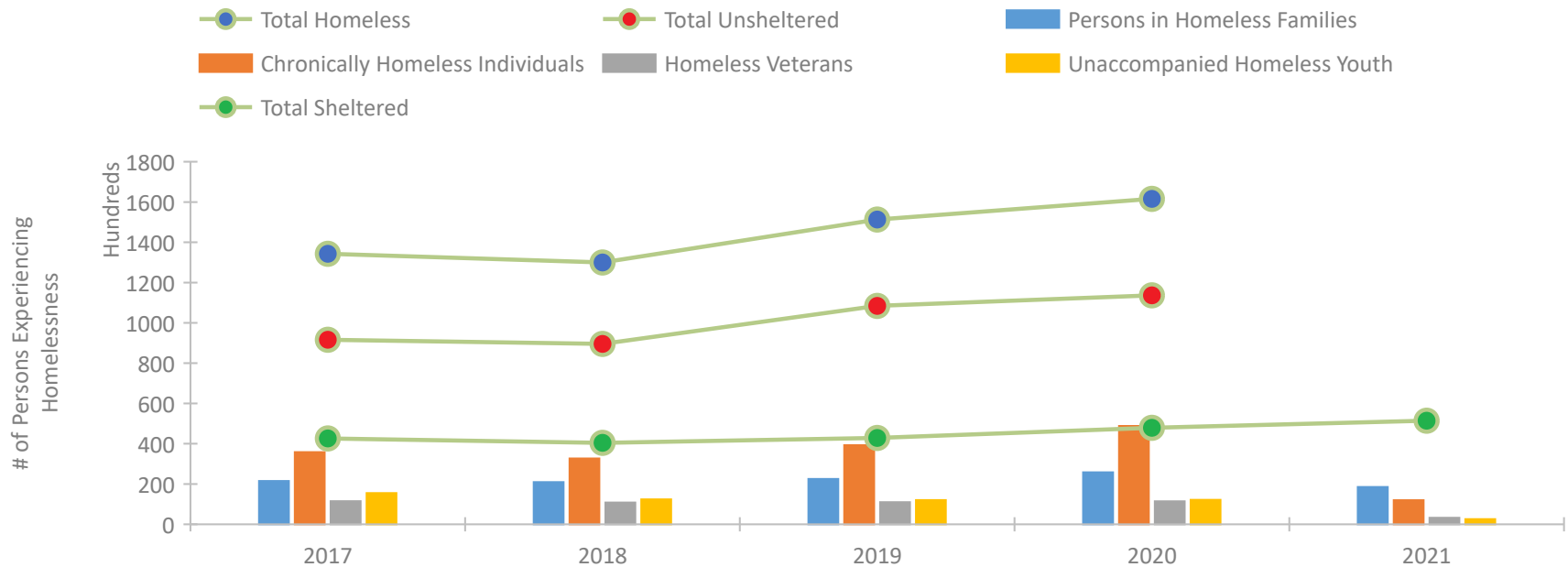


2021 CoC Boundaries 2020 CoC Boundaries

Housing Inventory Count by Program Type



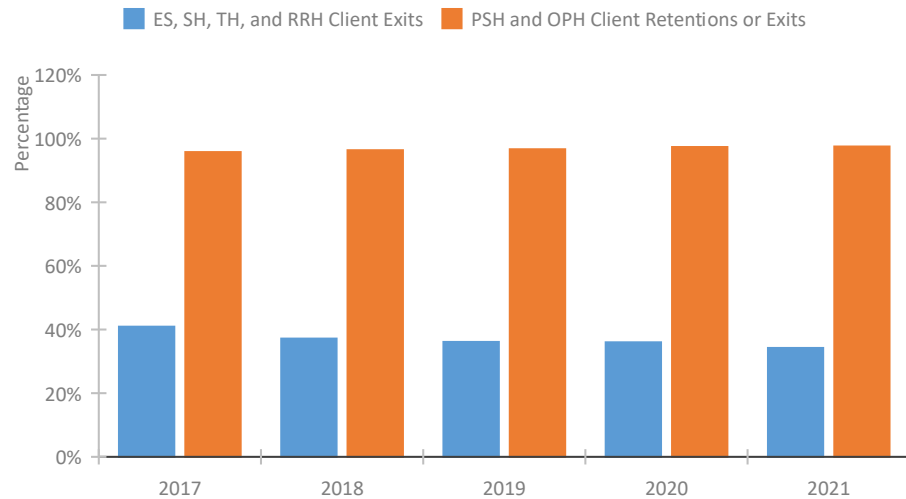
Homeless Population – Point-in-Time (PIT) Count*



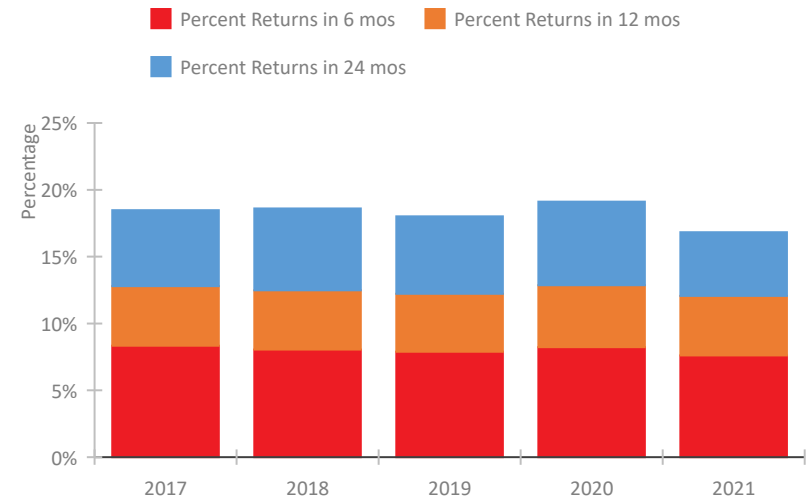
*In 2021, HUD gave communities the option to cancel or modify the unsheltered survey portion of their counts based on the potential risk of COVID-19 transmission associated with conducting an in-person survey. As a result, HUD has excluded the unsheltered population sub-totals and all unsheltered sub-population data for this reporting period. The user is cautioned that the unsheltered and total homeless counts reported here may be missing data.

California Continuum of Care Performance Profile

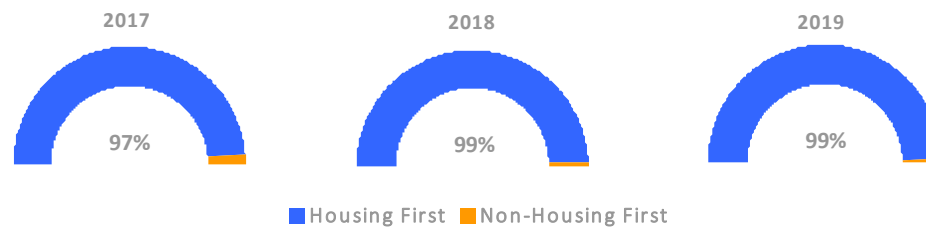
Exits to Permanent Housing by Program Type



Returns to Homelessness Over Time



Proportion of Housing First Projects by Year†



Number of Projects by Year

	2017	2018	2019
Housing First Projects	1,114	905	756
Non-Housing First Projects	29	9	9

†2021 Data unavailable at the time of report publication. In 2020 HUD awarded renewal projects noncompetitively, therefore no new data was collected and Housing First data remains the same from 2019 to 2020.

Data Summary: California

Point-In-Time Count Summary*

	2017	2018	2019	2020	2021	2020-21 Change	% Change
Number of Sheltered Persons in Families	17,614	16,794	17,523	19,642	18,519	-1,123	-6%
Number of Unsheltered Persons in Families	3,908	4,170	4,978	6,135	0	-6,135	-100%
Number of Sheltered Individuals	25,022	23,635	25,323	28,246	32,910	4,664	17%
Number of Unsheltered Individuals	87,734	85,373	103,454	107,525	--	--	--
Total Homeless Persons	134,278	129,972	151,278	161,548	51,429	-110,119	-68%
Number of Sheltered Families	5,836	5,372	5,514	6,252	5,915	-337	-5%
Number of Unsheltered Families	1,332	1,330	1,530	1,778	--	--	--
Number of Total Families	7,168	6,702	7,044	8,030	5,915	-2,115	-26%
Sheltered Chronically Homeless Individuals	4,430	4,857	6,483	8,036	11,966	3,930	49%
Unsheltered Chronically Homeless Individuals	31,368	27,811	32,792	40,776	--	--	--
Total Chronically Homeless Individuals	35,798	32,668	39,275	48,812	11,966	-36,846	-75%
Sheltered Veterans	3,815	3,622	3,261	3,405	3,212	-193	-6%
Unsheltered Veterans	7,657	7,214	7,719	7,996	--	--	--
Total Veterans	11,472	10,836	10,980	11,401	3,212	-8,189	-72%
Sheltered Unaccompanied Youth (up to 24)	2,709	2,476	2,528	2,662	2,526	-136	-5%
Unsheltered Unaccompanied Youth (up to 24)	12,749	9,920	9,465	9,510	--	--	--
Total Unaccompanied Youth (up to 24)	15,458	12,396	11,993	12,172	2,526	-9,646	-79%

System Performance Measures Summary

	2017	2018	2019	2020	2021	2020-21 Change	% Change
Rate People Return to Homelessness in 6 Months	8.3%	8.0%	7.9%	8.2%	7.6%	-0.6%	N/A
Number of People who are Homeless for the First Time	89,916	102,450	99,696	76,596	93,753	17,157	22.4%
Rate People Exit from ES, SH, TH, and RRH to PH	40.9%	37.2%	36.1%	36.0%	34.2%	-1.7%	N/A
Rate People in PSH and OPH Retain or Exit to PH	95.8%	96.3%	96.6%	97.3%	97.5%	0.2%	N/A

Housing Inventory Count Summary

	2017	2018	2019	2020	2021	2020-21 Change	% Change
Emergency Shelter (ES)	24,799	27,246	31,028	38,241	45,229	6,988	18%
Safe Haven (SH)	137	298	309	264	553	289	109%
Transitional Housing (TH)	19,537	16,004	14,969	14,760	14,800	40	0%
Permanent Supportive Housing (PSH)	59,836	63,163	65,397	65,872	69,864	3,992	6%
Rapid Re-Housing (RRH)	11,817	17,580	20,441	22,611	25,137	2,526	11%
Other Permanent Housing (OPH)	4,645	5,062	4,695	8,707	11,044	2,337	27%

Award Summary

	2017	2018	2019	2020	2021	2020-21 Change	% Change
Continuum of Care (CoC)	\$382,567,077	\$415,290,908	\$441,164,621	\$490,802,967	\$509,247,505	\$18,444,538	4%
Emergency Solutions Grants (ESG)	\$34,287,254	\$32,266,165	\$33,384,467	\$34,388,295	\$34,101,641	(\$286,654)	-1%
Youth Homelessness Demonstration Program (YHDP)	\$7,939,097	--	\$20,573,437	\$16,759,615	\$11,676,859	(\$5,082,756)	-30%

*In 2021, HUD gave communities the option to cancel or modify the unsheltered survey portion of their counts based on the potential risk of COVID-19 transmission associated with conducting an in-person survey. As a result, HUD has excluded the unsheltered population sub-totals and all unsheltered sub-population data for this reporting period. The user is cautioned that the unsheltered and total homeless counts reported here may be missing data.