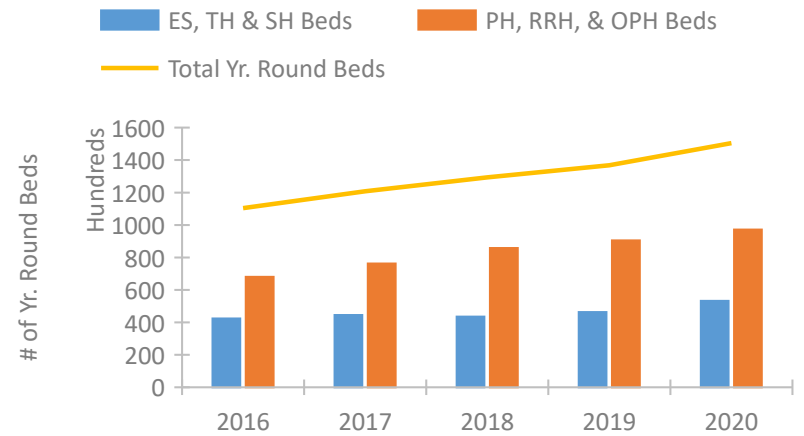


California Continuum of Care Performance Profile

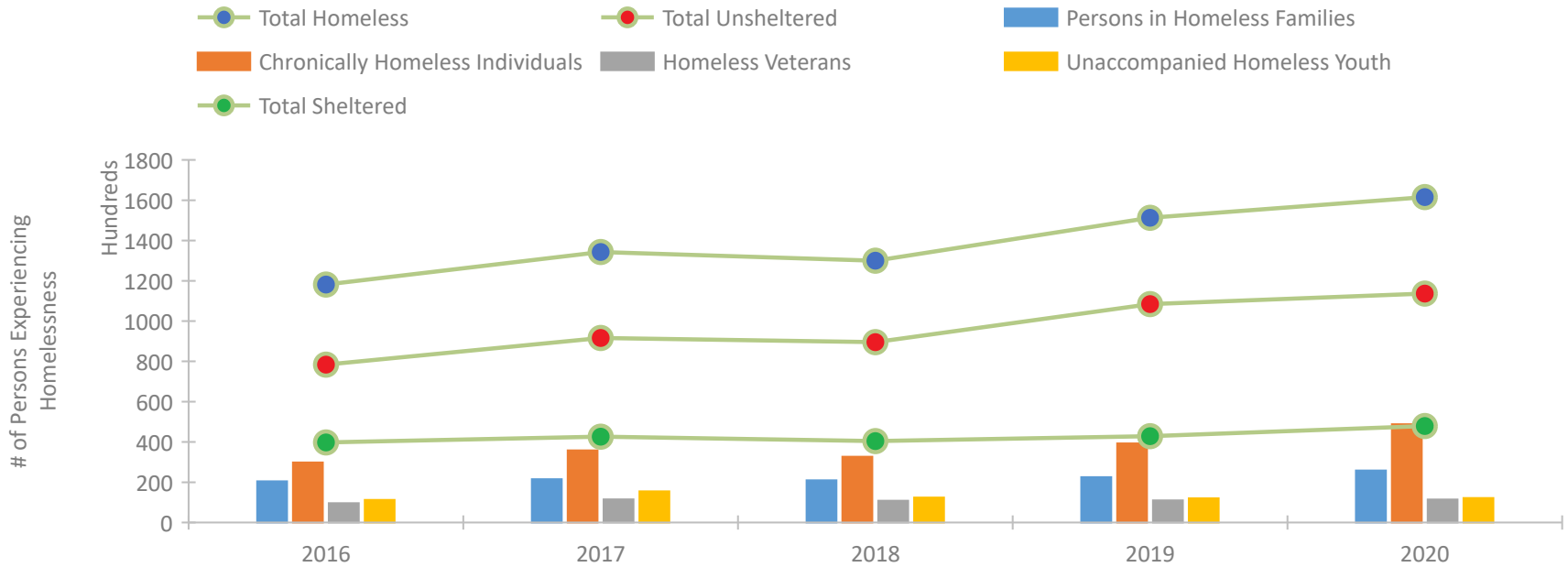


2020 CoC Boundaries 2019 CoC Boundaries

Housing Inventory Count by Program Type

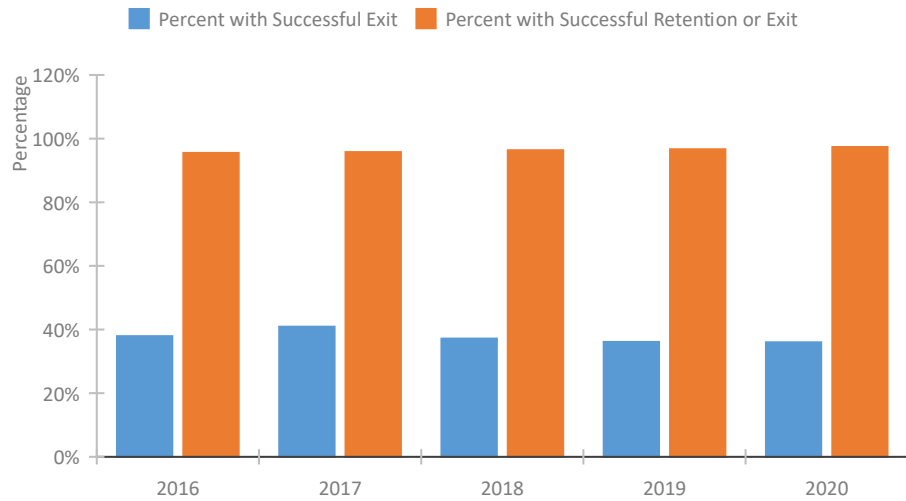


Homeless Population – Point-in-Time (PIT) Count

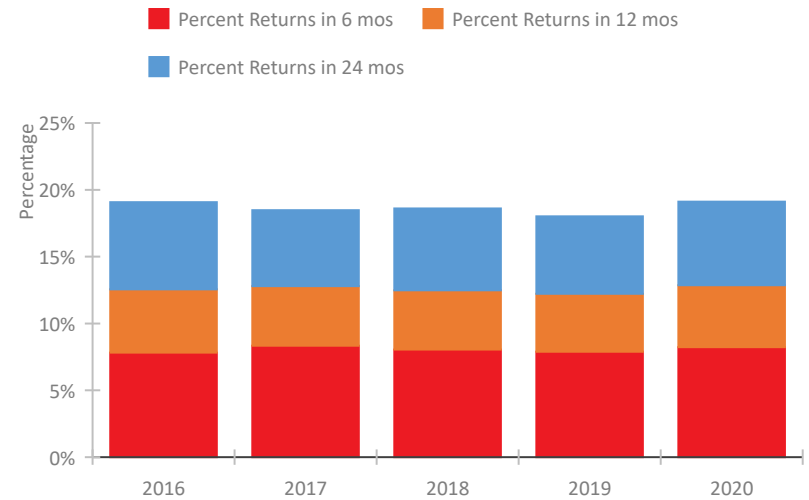


California Continuum of Care Performance Profile

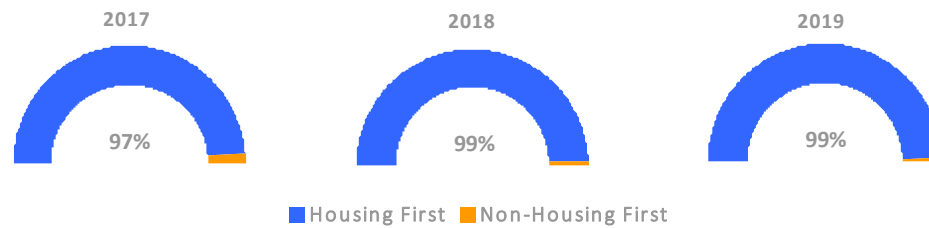
Exits to Permanent Housing by Program Type



Returns to Homelessness Over Time



Proportion of Housing First Projects by Year*



Number of Projects by Year			
	2017	2018	2019
Housing First Projects	1,114	905	756
Non-Housing First Projects	29	9	9

*In 2020 HUD awarded renewal projects noncompetitively, therefore no new data was collected and Housing First data remains the same from 2019 to 2020.

Data Summary: California

Point-In-Time Count Summary

	2016	2017	2018	2019	2020	2019-20 Change	% Change
Number of Sheltered Persons in Families	16,032	17,614	16,794	17,523	19,642	2,119	12%
Number of Unsheltered Persons in Families	4,450	3,908	4,170	4,978	6,135	1,157	23%
Number of Sheltered Individuals	23,720	25,022	23,635	25,323	28,246	2,923	12%
Number of Unsheltered Individuals	73,940	87,734	85,373	103,454	107,525	4,071	4%
Total Homeless Persons	118,142	134,278	129,972	151,278	161,548	10,270	7%
Number of Sheltered Families	5,175	5,836	5,372	5,514	6,252	738	13%
Number of Unsheltered Families	1,589	1,332	1,330	1,530	1,778	248	16%
Number of Total Families	6,764	7,168	6,702	7,044	8,030	986	14%
Sheltered Chronically Homeless Individuals	3,910	4,430	4,857	6,483	8,036	1,553	24%
Unsheltered Chronically Homeless Individuals	25,892	31,368	27,811	32,792	40,776	7,984	24%
Total Chronically Homeless Individuals	29,802	35,798	32,668	39,275	48,812	9,537	24%
Sheltered Veterans	4,012	3,815	3,622	3,261	3,405	144	4%
Unsheltered Veterans	5,600	7,657	7,214	7,719	7,996	277	4%
Total Veterans	9,612	11,472	10,836	10,980	11,401	421	4%
Sheltered Unaccompanied Youth (up to 24)	2,531	2,709	2,476	2,528	2,662	134	5%
Unsheltered Unaccompanied Youth (up to 24)	8,691	12,749	9,920	9,465	9,510	45	0%
Total Unaccompanied Youth (up to 24)	11,222	15,458	12,396	11,993	12,172	179	1%

System Performance Measures Summary

	2016	2017	2018	2019	2020	2019-20 Change	% Change
Rate People Return to Homelessness in 6 Months	7.8%	8.3%	8.0%	7.9%	8.2%	0.3%	N/A
Number of People who are Homeless for the First Time	90,574	89,916	102,450	99,696	76,596	-23,100	-23.2%
Rate People Exit from ES, SH, TH, and RRH to PH	37.9%	40.9%	37.2%	36.1%	36.0%	-0.1%	N/A
Rate People in PSH and OPH Retain or Exit to PH	95.5%	95.8%	96.3%	96.6%	97.3%	0.7%	N/A

Housing Inventory Count Summary

	2016	2017	2018	2019	2020	2019-20 Change	% Change
Emergency Shelter (ES)	20,240	24,799	27,246	31,028	38,241	7,213	23%
Safe Haven (SH)	145	137	298	309	264	-45	-15%
Transitional Housing (TH)	21,966	19,537	16,004	14,969	14,760	-209	-1%
Permanent Supportive Housing (PSH)	56,416	59,836	63,163	65,397	65,872	475	1%
Rapid Re-Housing (RRH)	8,775	11,817	17,580	20,441	22,611	2,170	11%
Other Permanent Housing (OPH)	2,841	4,645	5,062	4,695	8,707	4,012	85%

Award Summary

	2016	2017	2018	2019	2020	2019-20 Change	% Change
Continuum of Care (CoC)	\$352,946,617	\$382,567,077	\$415,290,908	\$441,164,621	\$490,802,967	\$49,638,346	11%
Emergency Solutions Grants (ESG)	\$32,252,721	\$34,287,254	\$32,266,165	\$33,384,467	\$34,388,295	\$1,003,828	3%
Youth Homelessness Demonstration Program (YHDP)	\$5,090,234	\$7,939,097	--	\$20,573,437	\$16,759,615	(\$3,813,822)	-19%