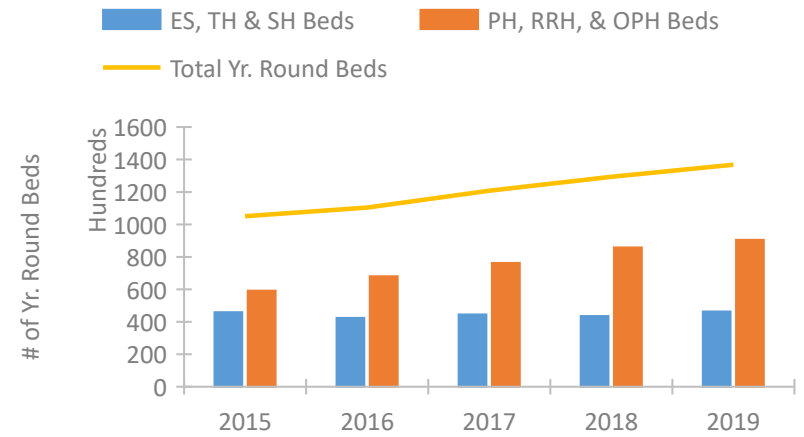


California Continuum of Care Performance Profile

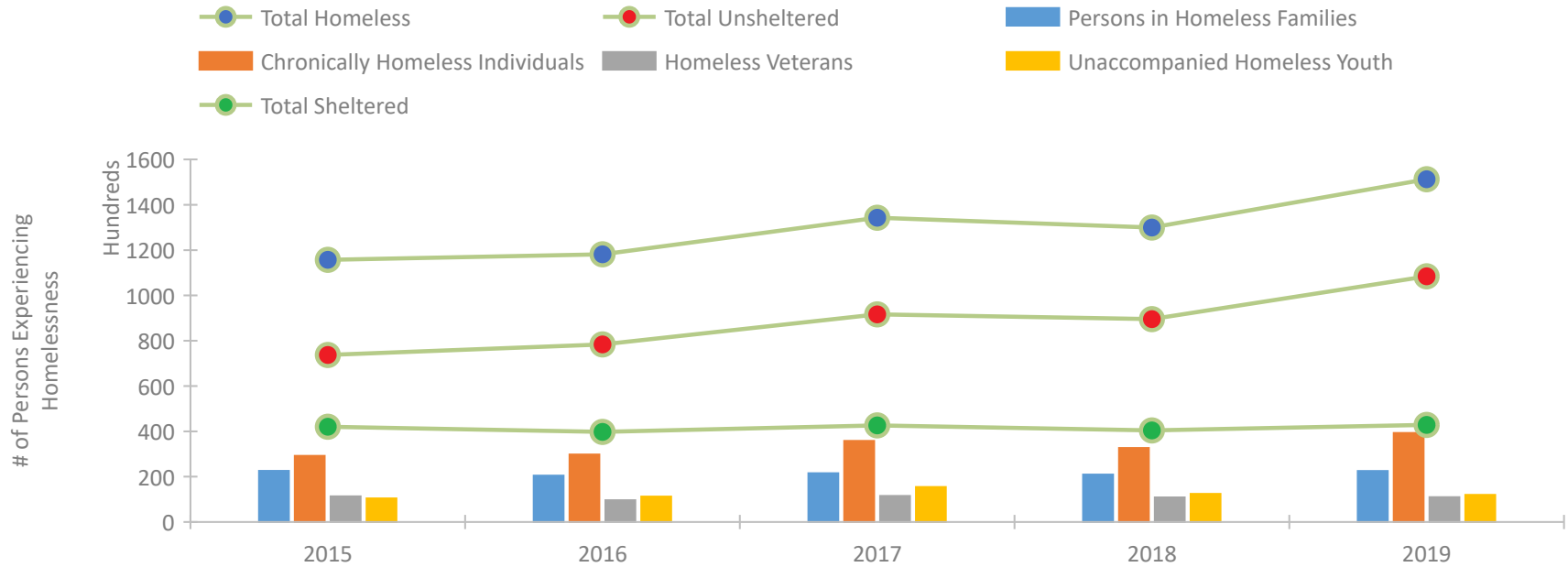


2019 CoC Boundaries 2018 CoC Boundaries

Housing Inventory Count by Program Type

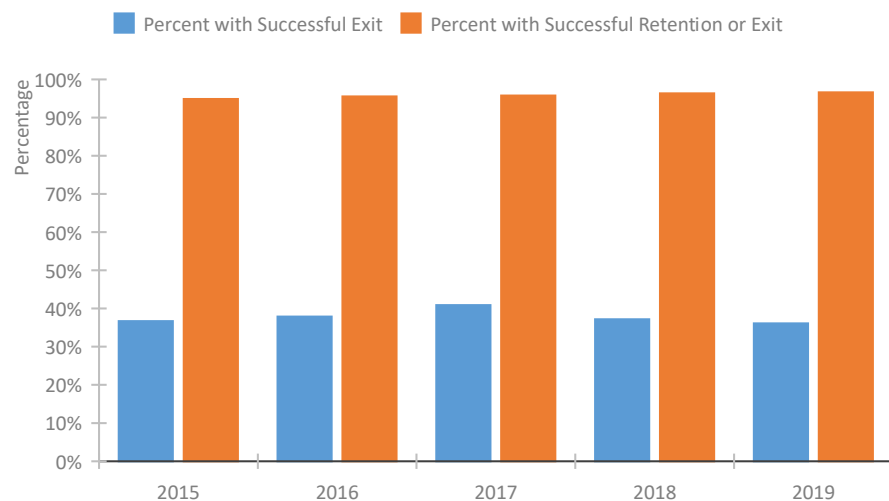


Homeless Population – Point-in-Time (PIT) Count

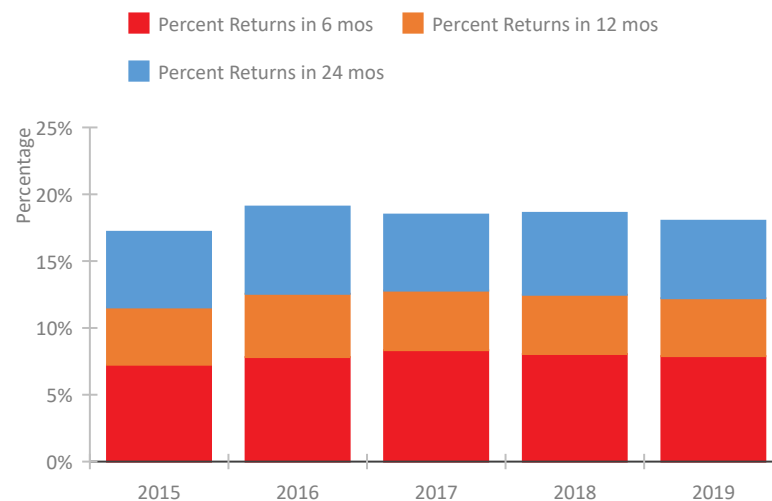


California Continuum of Care Performance Profile

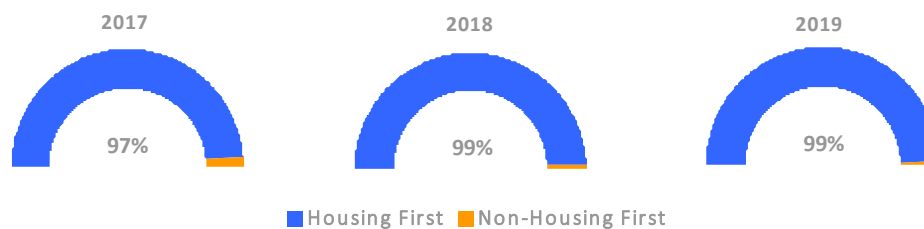
Exits to Permanent Housing by Program Type



Returns to Homelessness Over Time



Proportion of Housing First Projects by Year



Number of Projects by Year

	2017	2018	2019
Housing First Projects	1,114	905	756
Non-Housing First Projects	29	9	9

Data Summary: California

Point-In-Time Count Summary

	2015	2016	2017	2018	2019	2018-19 Change	% Change
Number of Sheltered Persons in Families	17,196	16,032	17,614	16,794	17,523	729	4%
Number of Unsheltered Persons in Families	5,386	4,450	3,908	4,170	4,978	808	19%
Number of Sheltered Individuals	24,843	23,720	25,022	23,635	25,323	1,688	7%
Number of Unsheltered Individuals	68,313	73,940	87,734	85,373	103,454	18,081	21%
Total Homeless Persons	115,738	118,142	134,278	129,972	151,278	21,306	16%
Number of Sheltered Families	5,593	5,175	5,836	5,372	5,514	142	3%
Number of Unsheltered Families	1,602	1,589	1,332	1,330	1,530	200	15%
Number of Total Families	7,195	6,764	7,168	6,702	7,044	342	5%
Sheltered Chronically Homeless Individuals	4,169	3,910	4,430	4,857	6,483	1,626	33%
Unsheltered Chronically Homeless Individuals	25,009	25,892	31,368	27,811	32,792	4,981	18%
Total Chronically Homeless Individuals	29,178	29,802	35,798	32,668	39,275	6,607	20%
Sheltered Veterans	4,309	4,012	3,815	3,622	3,261	-361	-10%
Unsheltered Veterans	7,002	5,600	7,657	7,214	7,719	505	7%
Total Veterans	11,311	9,612	11,472	10,836	10,980	144	1%
Sheltered Unaccompanied Youth (up to 24)	2,464	2,531	2,709	2,476	2,528	52	2%
Unsheltered Unaccompanied Youth (up to 24)	7,952	8,691	12,749	9,920	9,465	-455	-5%
Total Unaccompanied Youth (up to 24)	10,416	11,222	15,458	12,396	11,993	-403	-3%

System Performance Measures Summary

	2015	2016	2017	2018	2019	2018-19 Change	% Change
Rate People Return to Homelessness in 6 Months	7.2%	7.8%	8.3%	8.0%	7.9%	-0.2%	N/A
Number of People who are Homeless for the First Time	89,608	90,574	89,916	102,450	99,696	-2,754	-2.7%
Rate People Exit from ES, SH, TH, and RRH to PH	36.7%	37.9%	40.9%	37.2%	36.1%	-1.1%	N/A
Rate People in PSH and OPH Retain or Exit to PH	94.9%	95.5%	95.8%	96.3%	96.6%	0.3%	N/A

Housing Inventory Count Summary

	2015	2016	2017	2018	2019	2018-19 Change	% Change
Emergency Shelter (ES)	20,857	20,240	24,799	27,246	31,028	3,782	14%
Safe Haven (SH)	172	145	137	298	309	11	4%
Transitional Housing (TH)	24,900	21,966	19,537	16,004	14,969	-1,035	-6%
Permanent Supportive Housing (PSH)	50,760	56,416	59,836	63,163	65,397	2,234	4%
Rapid Re-Housing (RRH)	6,673	8,775	11,817	17,580	20,441	2,861	16%
Other Permanent Housing (OPH)	1,745	2,841	4,645	5,062	4,695	-367	-7%

Award Summary

	2015	2016	2017	2018	2019	2018-19 Change	% Change
Continuum of Care (CoC)	\$337,651,863	\$352,946,617	\$382,567,077	\$415,290,908	\$441,164,621	\$25,873,713	6%
Emergency Solutions Grants (ESG)	\$32,096,222	\$32,252,721	\$34,287,254	\$32,266,165	\$33,384,467	\$1,118,302	3%
Youth Homelessness Demonstration Program (YHDP)	N/A	\$5,090,234	\$7,939,097	--	--	--	--