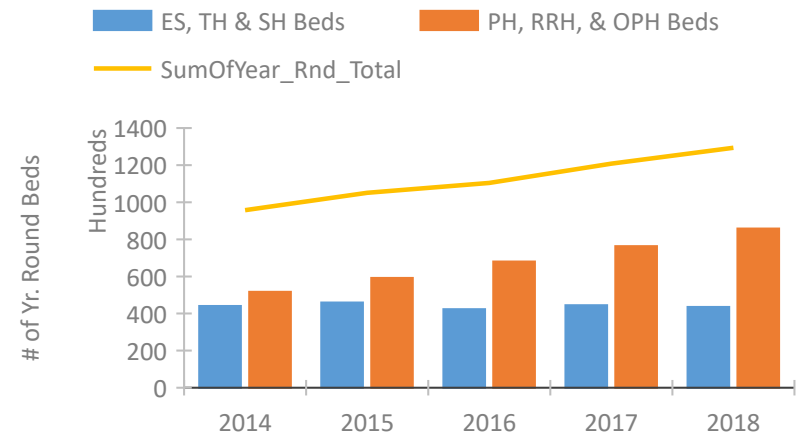


California Continuum of Care Performance Profile

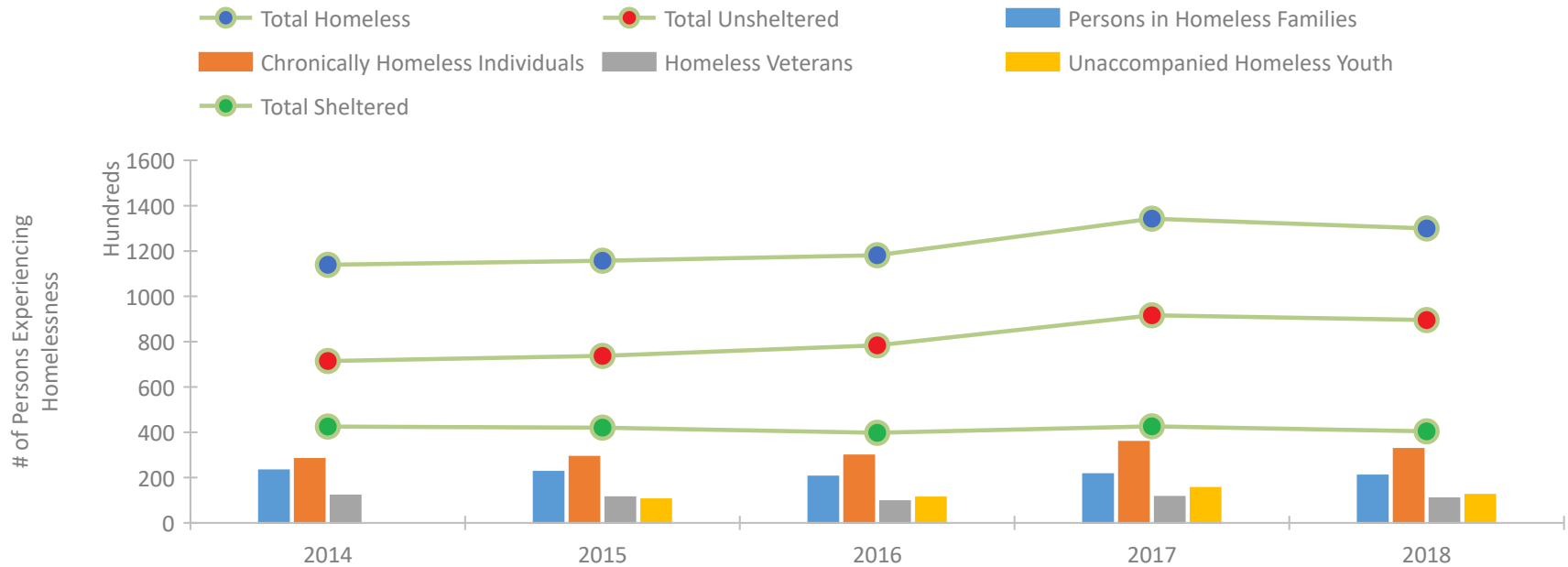


2018 CoC Boundaries 2017 CoC Boundaries

Housing Inventory Count by Program Type



Homeless Population – Point-in-Time (PIT) Count

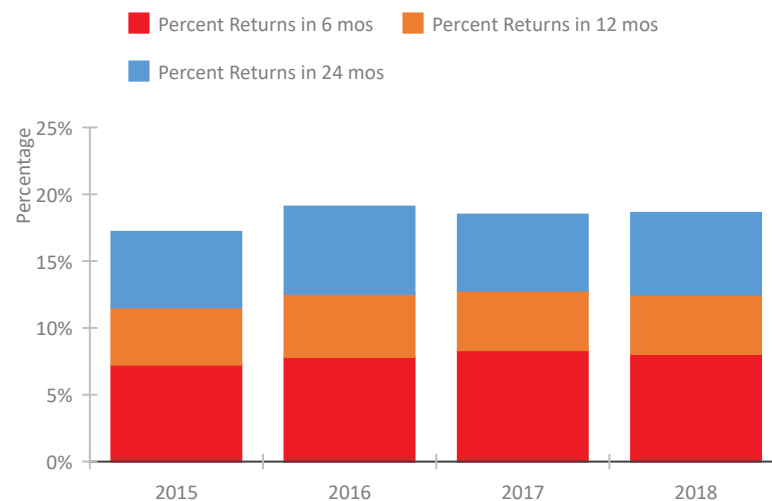


California Continuum of Care Performance Profile

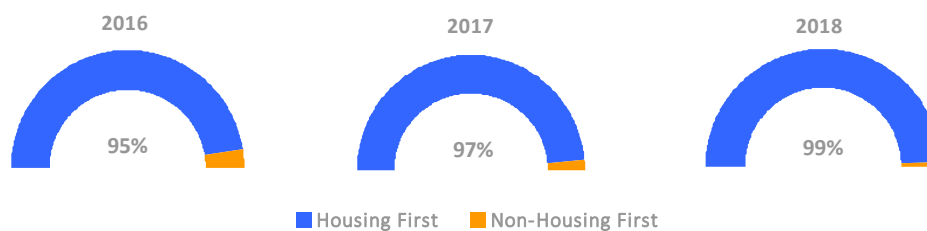
Exits to Permanent Housing by Program Type



Returns to Homelessness Over Time



Proportion of Housing First Projects by Year



Number of Projects by Year

	2016	2017	2018
Housing First Projects	822	1,114	905
Non-Housing First Projects	41	29	9

Data Summary: California

Point-In-Time Count Summary

	2014	2015	2016	2017	2018	2017-18 Change	% Change
Number of Sheltered Persons in Families	17,658	17,196	16,032	17,614	16,794	-820	-5%
Number of Unsheltered Persons in Families	5,529	5,386	4,450	3,908	4,170	262	7%
Number of Sheltered Individuals	24,502	24,600	23,481	24,812	23,423	-1,389	-6%
Number of Unsheltered Individuals	64,264	67,688	73,324	86,269	84,147	-2,122	-2%
Total Homeless Persons	111,953	114,870	117,287	132,603	128,534	-4,069	-3%
Number of Sheltered Families	5,128	5,593	5,175	5,836	5,372	-464	-8%
Number of Unsheltered Families	1,828	1,602	1,589	1,332	1,330	-2	0%
Number of Total Families	6,956	7,195	6,764	7,168	6,702	-466	-7%
Sheltered Chronically Homeless Individuals	4,417	4,169	3,910	4,430	4,857	427	10%
Unsheltered Chronically Homeless Individuals	23,783	25,009	25,892	31,368	27,811	-3,557	-11%
Total Chronically Homeless Individuals	28,200	29,178	29,802	35,798	32,668	-3,130	-9%
Sheltered Veterans	4,457	4,309	4,012	3,815	3,622	-193	-5%
Unsheltered Veterans	7,639	7,002	5,600	7,657	7,214	-443	-6%
Total Veterans	12,096	11,311	9,612	11,472	10,836	-636	-6%
Sheltered Unaccompanied Youth (up to 24)	--	2,464	2,531	2,709	2,476	-233	-9%
Unsheltered Unaccompanied Youth (up to 24)	--	7,952	8,691	12,749	9,920	-2,829	-22%
Total Unaccompanied Youth (up to 24)	--	10,416	11,222	15,458	12,396	-3,062	-20%

System Performance Measures Summary

	2014	2015	2016	2017	2018	2017-18 Change	% Change
Rate People Return to Homelessness in 6 Months	N/A	7.2%	7.8%	8.3%	8.0%	-0.3%	N/A
Number of People who are Homeless for the First Time	N/A	89,608	90,574	89,916	102,450	12,534	13.9%
Rate People Exit from ES, SH, TH, and RRH to PH	N/A	36.7%	37.9%	40.9%	37.2%	-3.7%	N/A
Rate People in PSH and OPH Retain or Exit to PH	N/A	94.9%	95.5%	95.8%	96.3%	0.6%	N/A

Housing Inventory Count Summary

	2014	2015	2016	2017	2018	2017-18 Change	% Change
Emergency Shelter (ES)	17,869	20,857	20,240	24,799	27,246	2,447	10%
Safe Haven (SH)	207	172	145	137	298	161	118%
Transitional Housing (TH)	25,959	24,900	21,966	19,537	16,004	-3,533	-18%
Permanent Supportive Housing (PSH)	45,580	50,760	56,416	59,836	63,163	3,327	6%
Rapid Re-Housing (RRH)	3,504	6,673	8,775	11,817	17,580	5,763	49%
Other Permanent Housing (OPH)	2,516	1,745	2,841	4,645	5,062	417	9%

Award Summary

	2014	2015	2016	2017	2018	2017-18 Change	% Change
Continuum of Care (CoC)	\$307,573,759	\$337,651,863	\$352,946,617	\$382,567,077	\$415,290,908	\$32,723,831	9%
Emergency Solutions Grants (ESG)	\$29,714,182	\$32,096,222	\$32,110,107	\$34,287,254	\$32,266,165	(\$2,021,089)	-6%
Youth Homelessness Demonstration Program (YHDP)	N/A	N/A	\$5,090,234	\$7,939,097	--	--	--