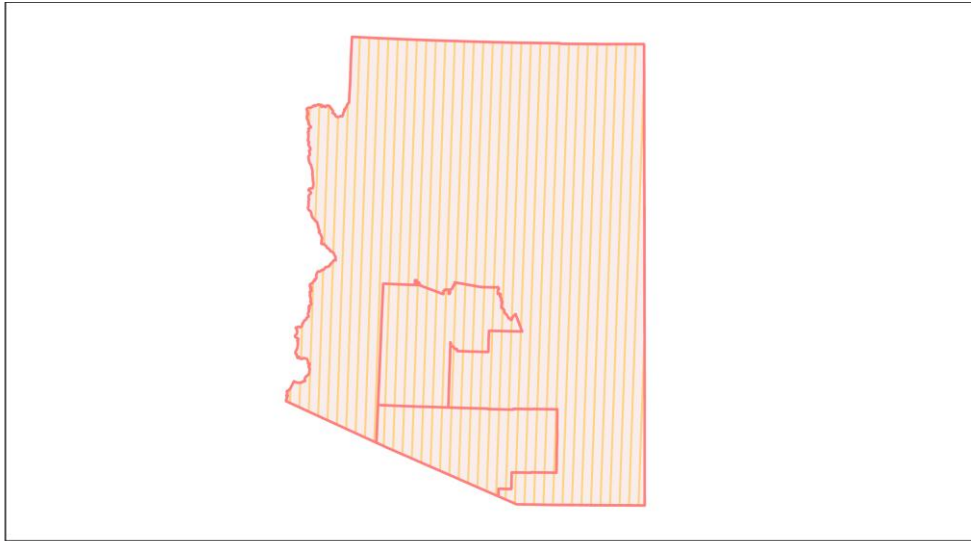
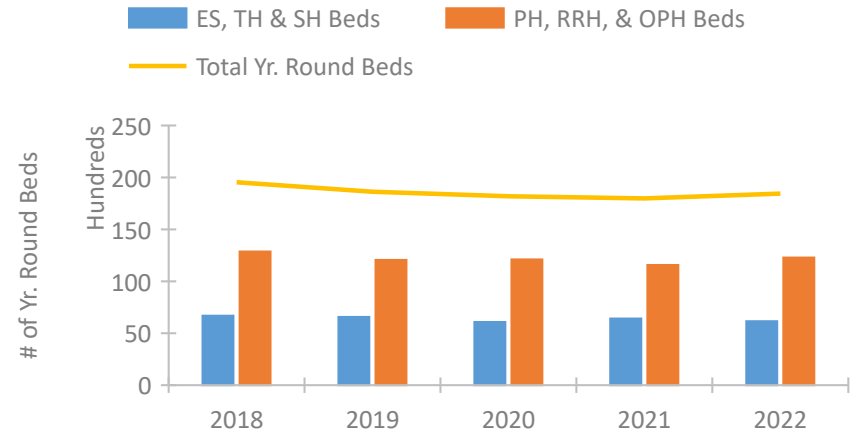


## Arizona Continuum of Care Performance Profile

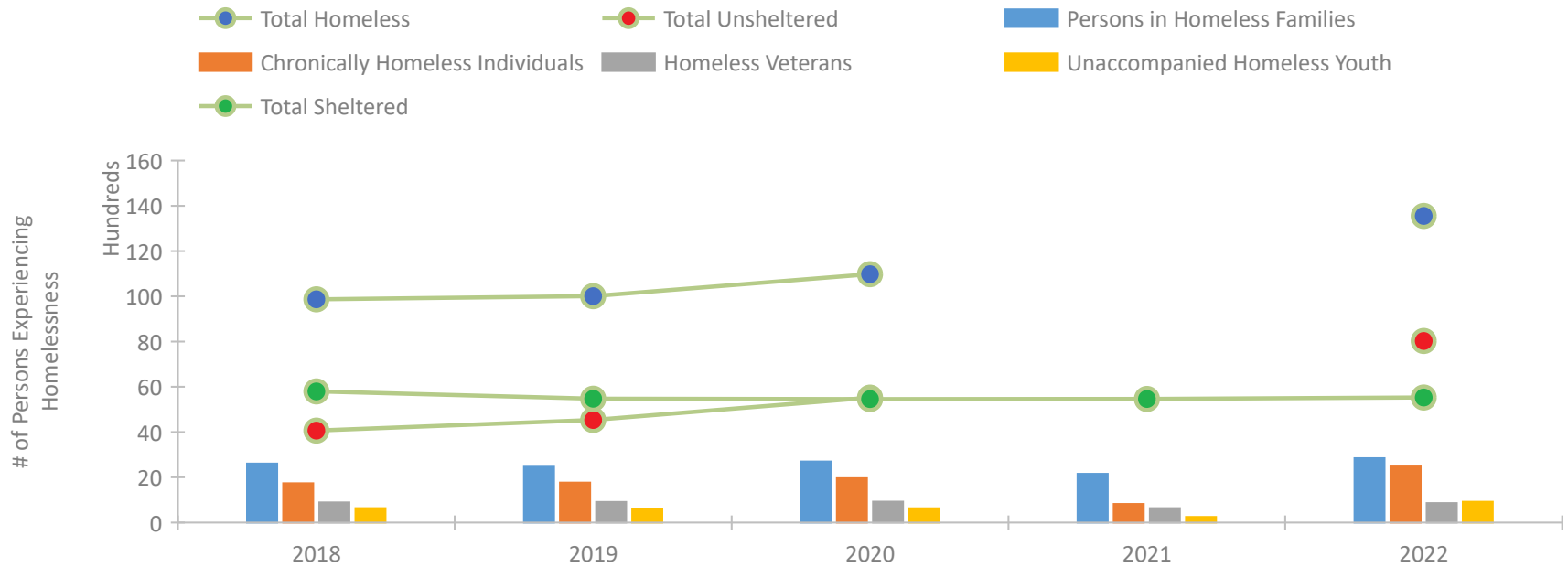


2022 CoC Boundaries 2021 CoC Boundaries

### Housing Inventory Count by Program Type



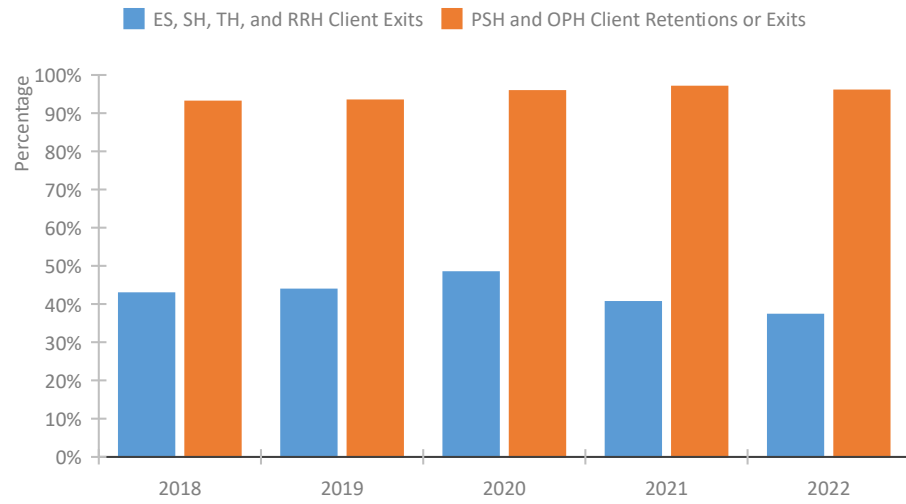
### Homeless Population – Point-in-Time (PIT) Count\*



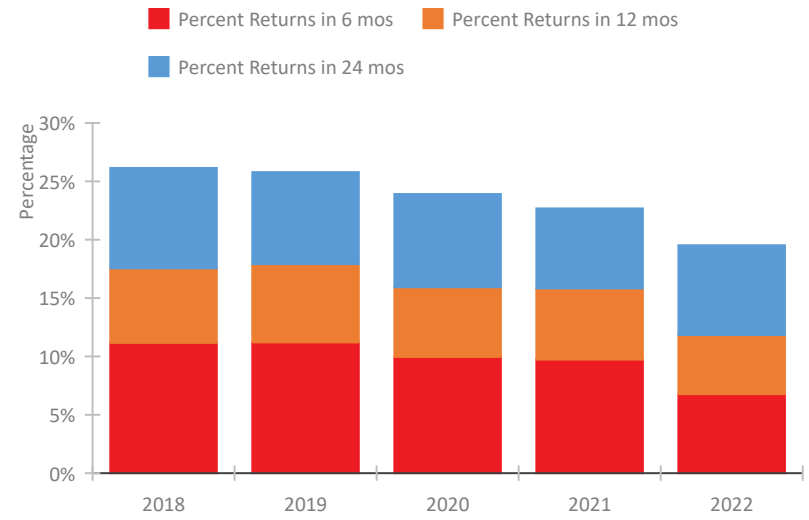
\*In 2021, HUD gave communities the option to cancel or modify the unsheltered survey portion of their counts based on the potential risk of COVID-19 transmission associated with conducting an in-person survey. As a result, HUD has excluded the unsheltered population sub-totals and all unsheltered sub-population data for this reporting period. The user is cautioned that the unsheltered and total homeless counts reported here may be missing data.

## Arizona Continuum of Care Performance Profile

### Exits to Permanent Housing by Program Type



### Returns to Homelessness Over Time



## Data Summary: Arizona

### Point-In-Time Count Summary\*

	2018	2019	2020	2021	2022	2021-22 Change	% Change
Number of Sheltered Persons in Families	2,445	2,376	2,456	2,156	2,160	4	0%
Number of Unsheltered Persons in Families	161	93	243	--	686	--	--
Number of Sheltered Individuals	3,354	3,099	3,002	3,304	3,366	62	2%
Number of Unsheltered Individuals	3,905	4,439	5,278	--	7,341	--	--
<b>Total Homeless Persons</b>	<b>9,865</b>	<b>10,007</b>	<b>10,979</b>	<b>5,460</b>	<b>13,553</b>	<b>8,093</b>	<b>148%</b>
Number of Sheltered Families	745	723	743	648	635	-13	-2%
Number of Unsheltered Families	47	22	66	--	197	--	--
<b>Number of Total Families</b>	<b>792</b>	<b>745</b>	<b>809</b>	<b>648</b>	<b>832</b>	<b>184</b>	<b>28%</b>
Sheltered Chronically Homeless Individuals	564	599	514	818	843	25	3%
Unsheltered Chronically Homeless Individuals	1,176	1,167	1,445	--	1,633	--	--
<b>Total Chronically Homeless Individuals</b>	<b>1,740</b>	<b>1,766</b>	<b>1,959</b>	<b>818</b>	<b>2,476</b>	<b>1,658</b>	<b>203%</b>
Sheltered Veterans	540	598	579	637	529	-108	-17%
Unsheltered Veterans	353	312	342	--	328	--	--
<b>Total Veterans</b>	<b>893</b>	<b>910</b>	<b>921</b>	<b>637</b>	<b>857</b>	<b>220</b>	<b>35%</b>
Sheltered Unaccompanied Youth (up to 24)	397	307	241	249	295	46	18%
Unsheltered Unaccompanied Youth (up to 24)	241	280	392	--	622	--	--
<b>Total Unaccompanied Youth (up to 24)</b>	<b>638</b>	<b>587</b>	<b>633</b>	<b>249</b>	<b>917</b>	<b>668</b>	<b>268%</b>

### System Performance Measures Summary

	2018	2019	2020	2021	2022	2021-22 Change	% Change
Rate People Return to Homelessness in 6 Months	11.2%	11.2%	10.0%	9.7%	6.8%	-3%	N/A
Number of People who are Homeless for the First Time	16,426	16,911	15,355	18,182	20,792	2,610	14.4%
Rate People Exit from ES, SH, TH, and RRH to PH	42.8%	43.8%	48.3%	40.5%	37.2%	-3.3%	N/A
Rate People in PSH and OPH Retain or Exit to PH	93.0%	93.3%	95.8%	96.9%	95.9%	-1%	N/A

### Housing Inventory Count Summary

	2018	2019	2020	2021	2022	2021-22 Change	% Change
Emergency Shelter (ES)	4,058	3,787	3,632	4,292	4,272	-20	0%
Safe Haven (SH)	37	68	77	93	82	-11	-12%
Transitional Housing (TH)	2,588	2,713	2,370	2,026	1,808	-218	-11%
Permanent Supportive Housing (PSH)	9,255	9,238	8,703	8,454	8,979	525	6%
Rapid Re-Housing (RRH)	2,522	2,512	3,058	2,761	2,613	-148	-5%
Other Permanent Housing (OPH)	1,086	315	346	354	698	344	97%

### Award Summary

	2018	2019	2020	2021	2022	2021-22 Change	% Change
<b>Continuum of Care (CoC)</b>	\$40,629,348	\$41,350,799	\$46,681,615	\$52,261,398	\$53,597,059	\$1,335,661	3%
<b>Emergency Solutions Grants (ESG)</b>	\$4,496,161	\$4,712,559	\$4,865,682	\$4,852,810	\$4,872,241	\$19,431	0%
<b>Youth Homelessness Demonstration Program (YHDP)</b>	\$4,558,069	--	--	--	--	--	--

\*In 2021, HUD gave communities the option to cancel or modify the unsheltered survey portion of their counts based on the potential risk of COVID-19 transmission associated with conducting an in-person survey. As a result, HUD has excluded the unsheltered population sub-totals and all unsheltered sub-population data for this reporting period. The user is cautioned that the unsheltered and total homeless counts reported here may be missing data.