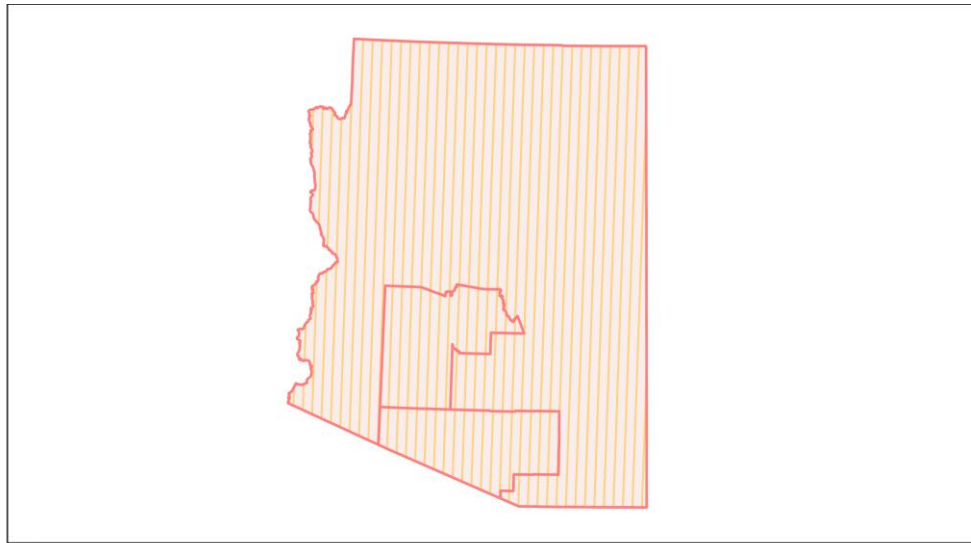
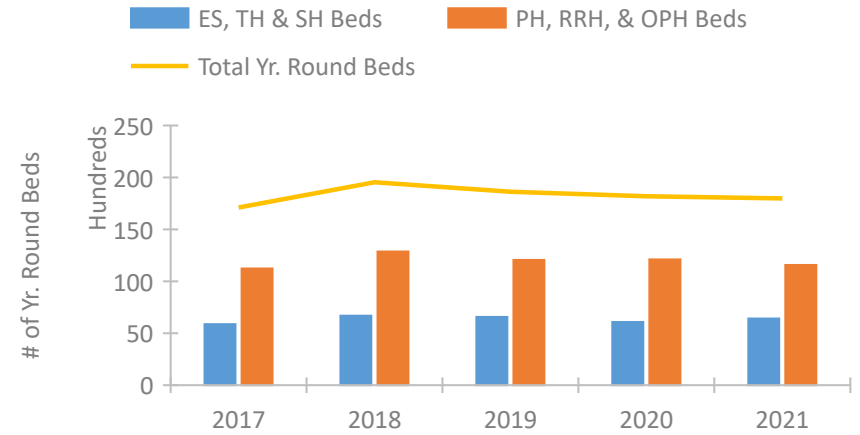


Arizona Continuum of Care Performance Profile

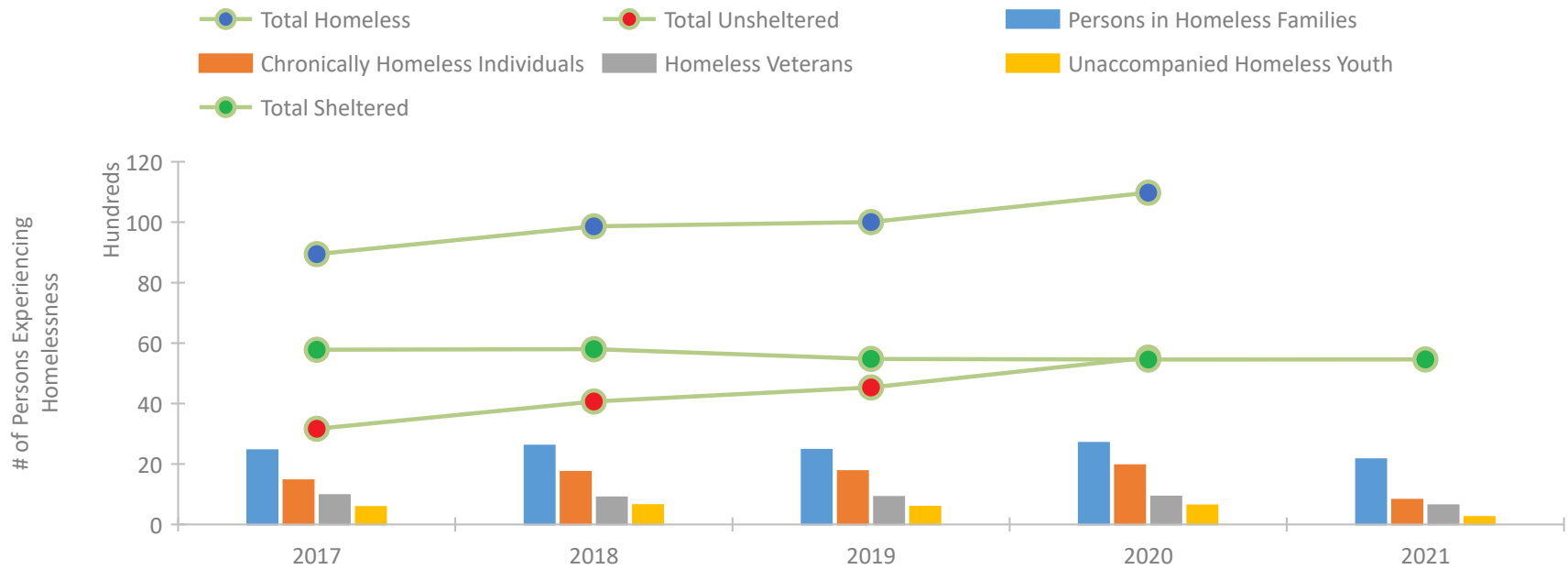


2021 CoC Boundaries 2020 CoC Boundaries

Housing Inventory Count by Program Type



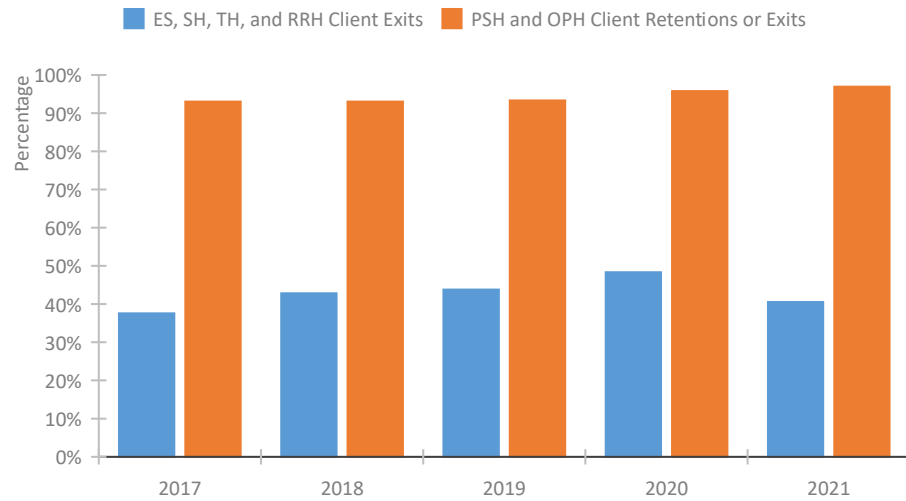
Homeless Population – Point-in-Time (PIT) Count*



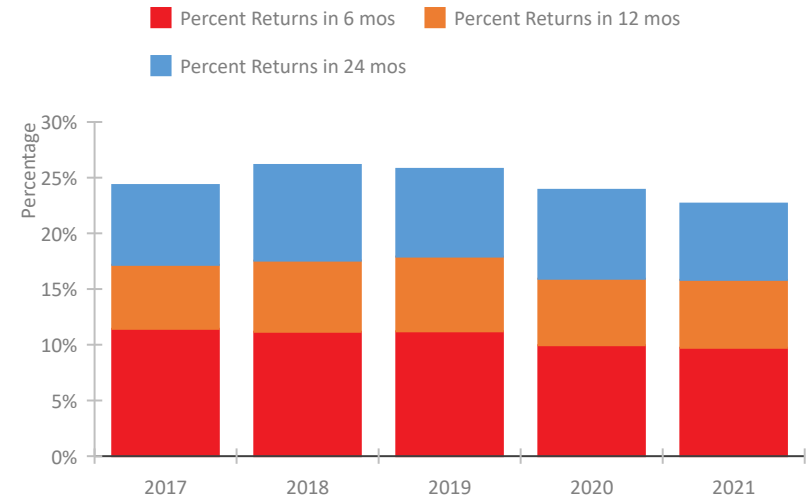
*In 2021, HUD gave communities the option to cancel or modify the unsheltered survey portion of their counts based on the potential risk of COVID-19 transmission associated with conducting an in-person survey. As a result, HUD has excluded the unsheltered population sub-totals and all unsheltered sub-population data for this reporting period. The user is cautioned that the unsheltered and total homeless counts reported here may be missing data.

Arizona Continuum of Care Performance Profile

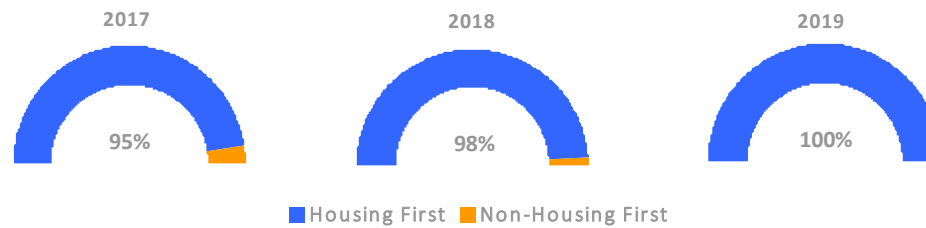
Exits to Permanent Housing by Program Type



Returns to Homelessness Over Time



Proportion of Housing First Projects by Year†



Number of Projects by Year

	2017	2018	2019
Housing First Projects	92	92	64
Non-Housing First Projects	5	2	0

†2021 Data unavailable at the time of report publication. In 2020 HUD awarded renewal projects noncompetitively, therefore no new data was collected and Housing First data remains the same from 2019 to 2020.

Data Summary: Arizona

Point-In-Time Count Summary*

	2017	2018	2019	2020	2021	2020-21 Change	% Change
Number of Sheltered Persons in Families	2,358	2,445	2,376	2,456	2,156	-300	-12%
Number of Unsheltered Persons in Families	101	161	93	243	0	-243	-100%
Number of Sheltered Individuals	3,423	3,354	3,099	3,002	3,304	302	10%
Number of Unsheltered Individuals	3,065	3,905	4,439	5,278	--	--	--
Total Homeless Persons	8,947	9,865	10,007	10,979	5,460	-5,519	-50%
Number of Sheltered Families	664	745	723	743	648	-95	-13%
Number of Unsheltered Families	25	47	22	66	--	--	--
Number of Total Families	689	792	745	809	648	-161	-20%
Sheltered Chronically Homeless Individuals	492	564	599	514	818	304	59%
Unsheltered Chronically Homeless Individuals	971	1,176	1,167	1,445	--	--	--
Total Chronically Homeless Individuals	1,463	1,740	1,766	1,959	818	-1,141	-58%
Sheltered Veterans	641	540	598	579	637	58	10%
Unsheltered Veterans	329	353	312	342	--	--	--
Total Veterans	970	893	910	921	637	-284	-31%
Sheltered Unaccompanied Youth (up to 24)	345	397	307	241	249	8	3%
Unsheltered Unaccompanied Youth (up to 24)	233	241	280	392	--	--	--
Total Unaccompanied Youth (up to 24)	578	638	587	633	249	-384	-61%

System Performance Measures Summary

	2017	2018	2019	2020	2021	2020-21 Change	% Change
Rate People Return to Homelessness in 6 Months	11.4%	11.2%	11.2%	10.0%	9.7%	-0.2%	N/A
Number of People who are Homeless for the First Time	17,514	16,426	16,911	15,355	18,182	2,827	18.4%
Rate People Exit from ES, SH, TH, and RRH to PH	37.6%	42.8%	43.8%	48.3%	40.5%	-7.8%	N/A
Rate People in PSH and OPH Retain or Exit to PH	93.0%	93.0%	93.3%	95.8%	96.9%	1.2%	N/A

Housing Inventory Count Summary

	2017	2018	2019	2020	2021	2020-21 Change	% Change
Emergency Shelter (ES)	3,866	4,058	3,787	3,632	4,292	660	18%
Safe Haven (SH)	36	37	68	77	93	16	21%
Transitional Housing (TH)	1,978	2,588	2,713	2,370	2,026	-344	-15%
Permanent Supportive Housing (PSH)	8,625	9,255	9,238	8,703	8,454	-249	-3%
Rapid Re-Housing (RRH)	1,536	2,522	2,512	3,058	2,761	-297	-10%
Other Permanent Housing (OPH)	1,076	1,086	315	346	354	8	2%

Award Summary

	2017	2018	2019	2020	2021	2020-21 Change	% Change
Continuum of Care (CoC)	\$38,526,473	\$40,629,348	\$41,350,799	\$46,681,615	\$52,261,398	\$5,579,783	12%
Emergency Solutions Grants (ESG)	\$5,269,566	\$4,496,161	\$4,712,559	\$4,865,682	\$4,852,810	(\$12,872)	0%
Youth Homelessness Demonstration Program (YHDP)	--	\$4,558,069	--	--	--	--	--

*In 2021, HUD gave communities the option to cancel or modify the unsheltered survey portion of their counts based on the potential risk of COVID-19 transmission associated with conducting an in-person survey. As a result, HUD has excluded the unsheltered population sub-totals and all unsheltered sub-population data for this reporting period. The user is cautioned that the unsheltered and total homeless counts reported here may be missing data.