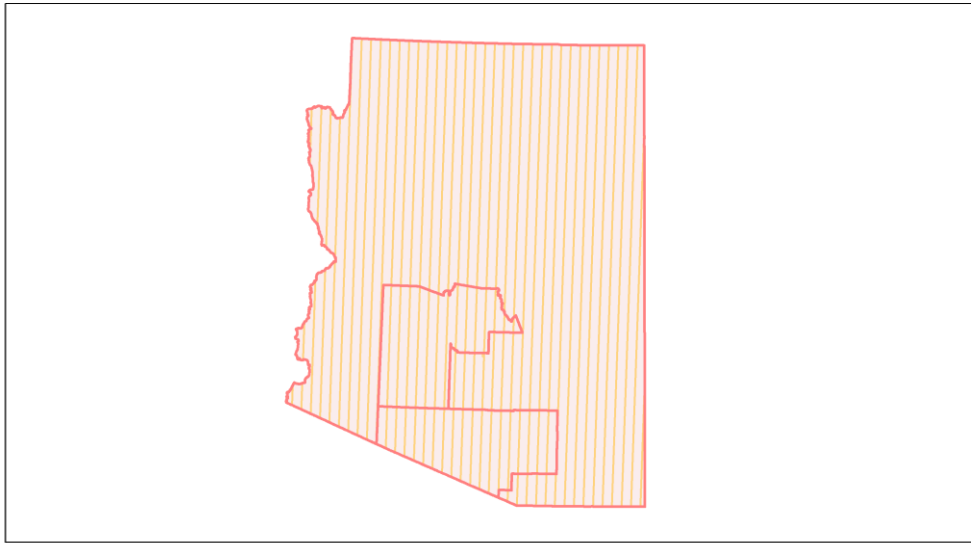
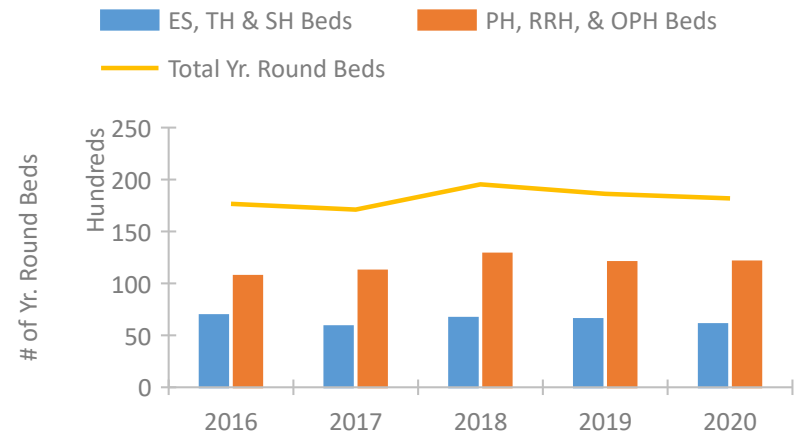


Arizona Continuum of Care Performance Profile

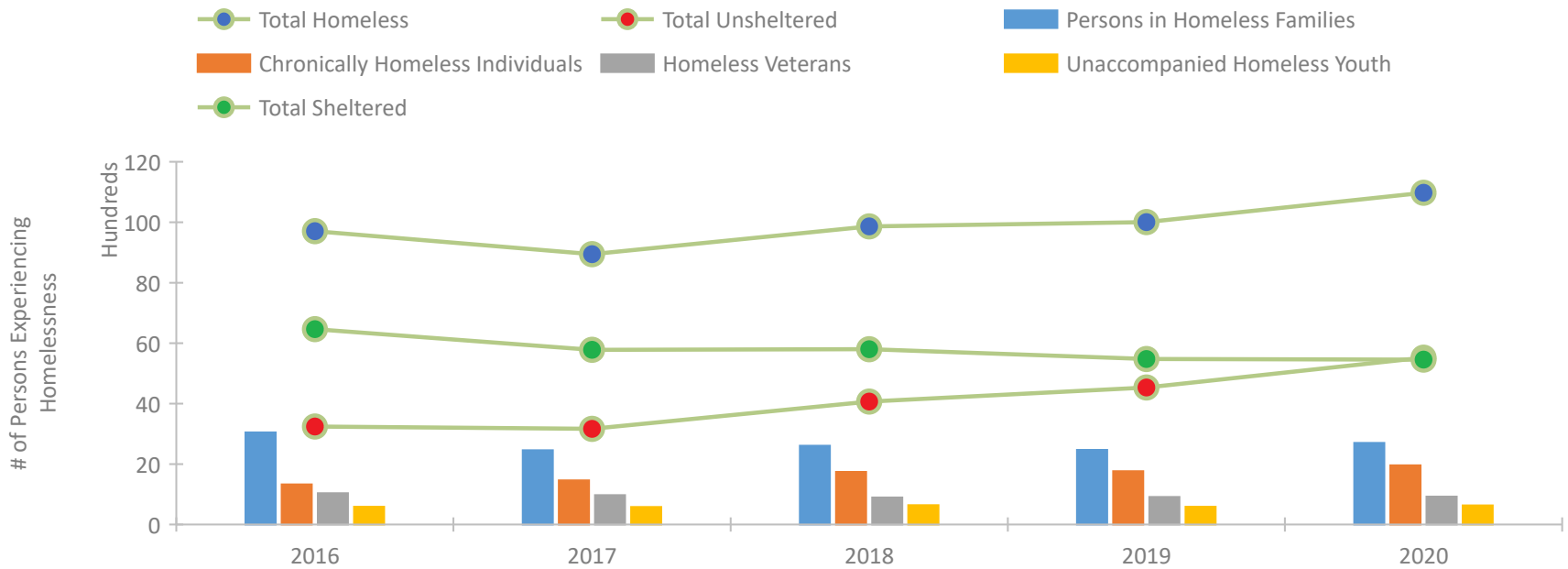


2020 CoC Boundaries 2019 CoC Boundaries

Housing Inventory Count by Program Type

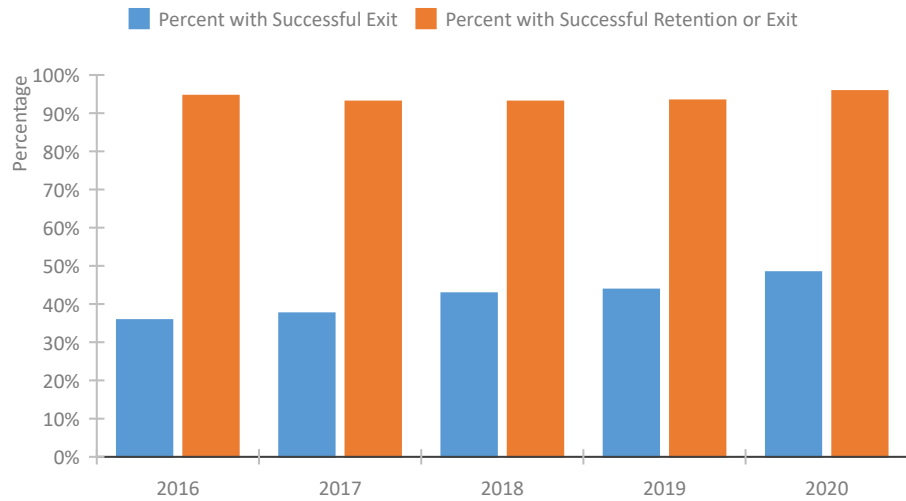


Homeless Population – Point-in-Time (PIT) Count

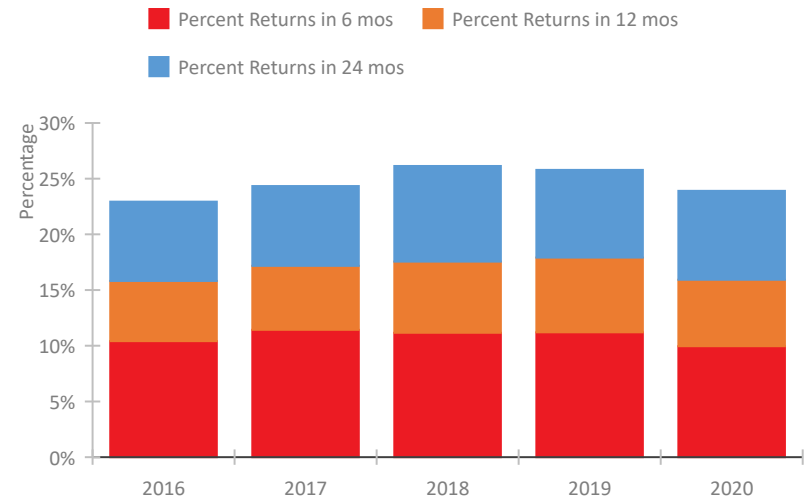


Arizona Continuum of Care Performance Profile

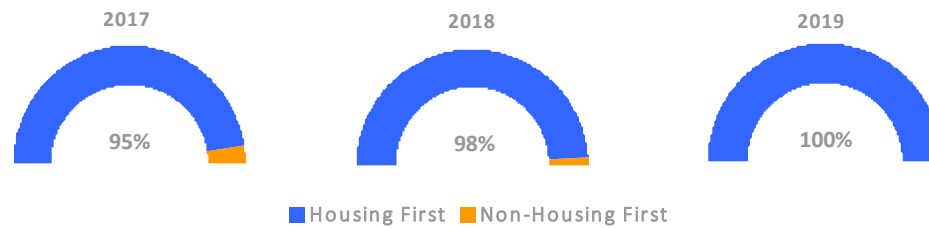
Exits to Permanent Housing by Program Type



Returns to Homelessness Over Time



Proportion of Housing First Projects by Year*



Number of Projects by Year			
	2017	2018	2019
Housing First Projects	92	92	64
Non-Housing First Projects	5	2	0

*In 2020 HUD awarded renewal projects noncompetitively, therefore no new data was collected and Housing First data remains the same from 2019 to 2020.

Data Summary: Arizona

Point-In-Time Count Summary

	2016	2017	2018	2019	2020	2019-20 Change	% Change
Number of Sheltered Persons in Families	2,899	2,358	2,445	2,376	2,456	80	3%
Number of Unsheltered Persons in Families	149	101	161	93	243	150	161%
Number of Sheltered Individuals	3,564	3,423	3,354	3,099	3,002	-97	-3%
Number of Unsheltered Individuals	3,095	3,065	3,905	4,439	5,278	839	19%
Total Homeless Persons	9,707	8,947	9,865	10,007	10,979	972	10%
Number of Sheltered Families	877	664	745	723	743	20	3%
Number of Unsheltered Families	40	25	47	22	66	44	200%
Number of Total Families	917	689	792	745	809	64	9%
Sheltered Chronically Homeless Individuals	423	492	564	599	514	-85	-14%
Unsheltered Chronically Homeless Individuals	904	971	1,176	1,167	1,445	278	24%
Total Chronically Homeless Individuals	1,327	1,463	1,740	1,766	1,959	193	11%
Sheltered Veterans	663	641	540	598	579	-19	-3%
Unsheltered Veterans	373	329	353	312	342	30	10%
Total Veterans	1,036	970	893	910	921	11	1%
Sheltered Unaccompanied Youth (up to 24)	431	345	397	307	241	-66	-21%
Unsheltered Unaccompanied Youth (up to 24)	158	233	241	280	392	112	40%
Total Unaccompanied Youth (up to 24)	589	578	638	587	633	46	8%

System Performance Measures Summary

	2016	2017	2018	2019	2020	2019-20 Change	% Change
Rate People Return to Homelessness in 6 Months	10.4%	11.4%	11.2%	11.2%	10.0%	-1.3%	N/A
Number of People who are Homeless for the First Time	17,660	17,514	16,426	16,911	15,355	-1,556	-9.2%
Rate People Exit from ES, SH, TH, and RRH to PH	35.8%	37.6%	42.8%	43.8%	48.3%	4.5%	N/A
Rate People in PSH and OPH Retain or Exit to PH	94.6%	93.0%	93.0%	93.3%	95.8%	2.4%	N/A

Housing Inventory Count Summary

	2016	2017	2018	2019	2020	2019-20 Change	% Change
Emergency Shelter (ES)	3,922	3,866	4,058	3,787	3,632	-155	-4%
Safe Haven (SH)	40	36	37	68	77	9	13%
Transitional Housing (TH)	2,980	1,978	2,588	2,713	2,370	-343	-13%
Permanent Supportive Housing (PSH)	7,504	8,625	9,255	9,238	8,703	-535	-6%
Rapid Re-Housing (RRH)	1,902	1,536	2,522	2,512	3,058	546	22%
Other Permanent Housing (OPH)	1,320	1,076	1,086	315	346	31	10%

Award Summary

	2016	2017	2018	2019	2020	2019-20 Change	% Change
Continuum of Care (CoC)	\$37,833,350	\$38,526,473	\$40,629,348	\$41,350,799	\$46,681,615	\$5,330,816	13%
Emergency Solutions Grants (ESG)	\$4,403,372	\$5,269,566	\$4,496,161	\$4,712,559	\$4,865,682	\$153,123	3%
Youth Homelessness Demonstration Program (YHDP)	--	--	\$4,558,069	--	--	--	--