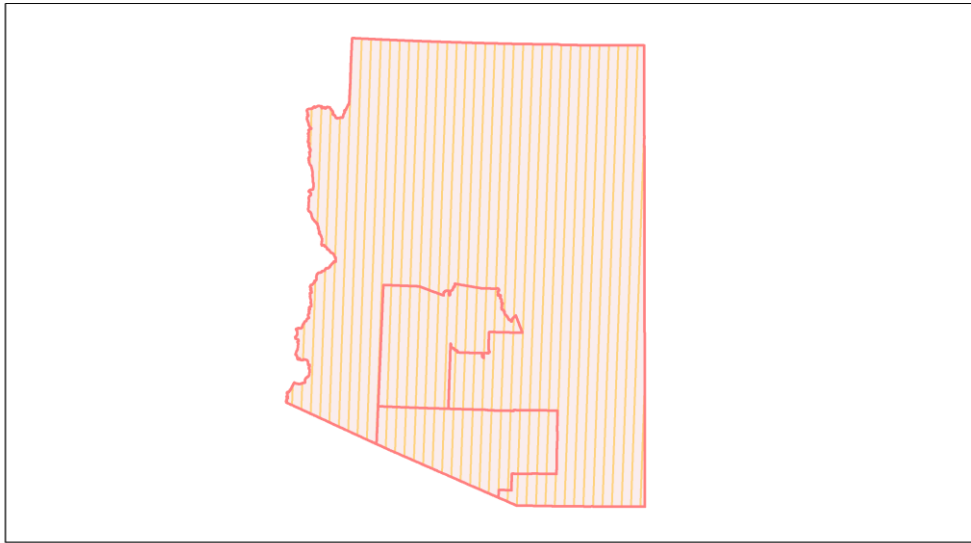
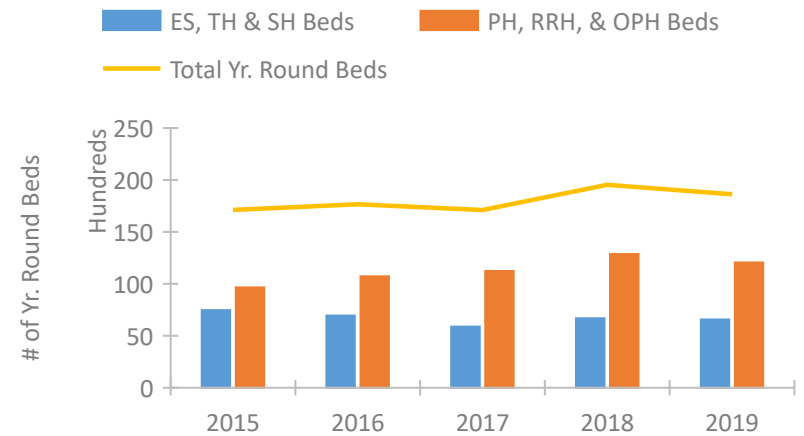


Arizona Continuum of Care Performance Profile

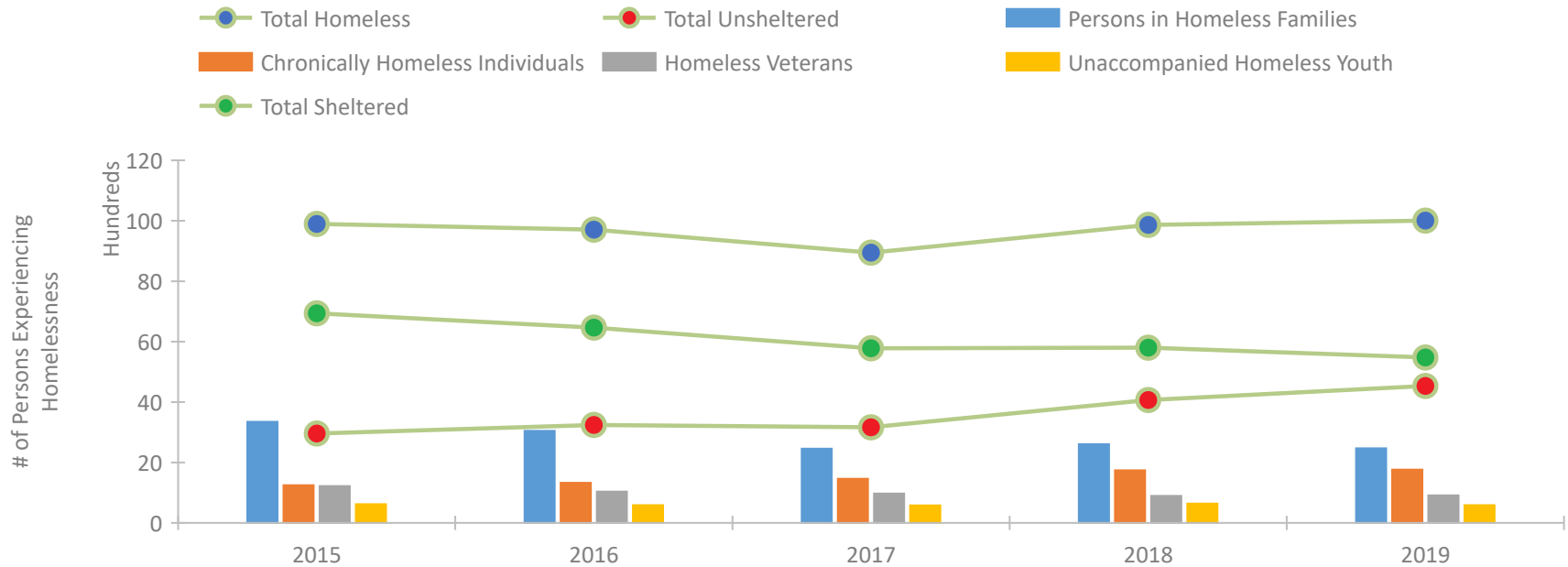


2019 CoC Boundaries 2018 CoC Boundaries

Housing Inventory Count by Program Type

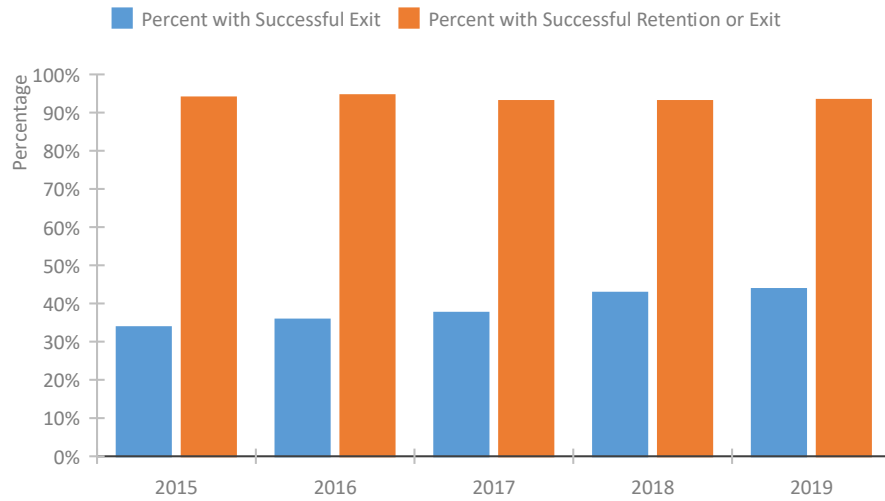


Homeless Population – Point-in-Time (PIT) Count

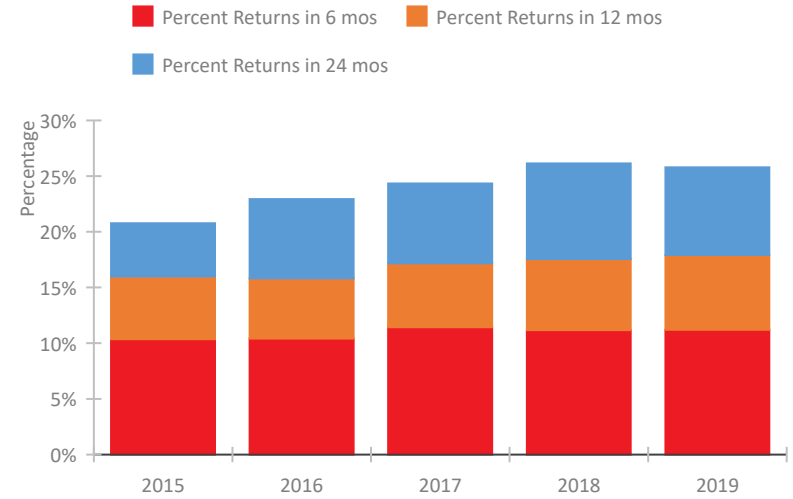


Arizona Continuum of Care Performance Profile

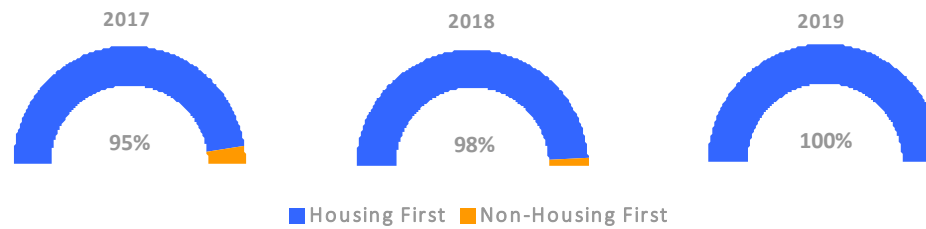
Exits to Permanent Housing by Program Type



Returns to Homelessness Over Time



Proportion of Housing First Projects by Year



Number of Projects by Year

	2017	2018	2019
Housing First Projects	92	92	64
Non-Housing First Projects	5	2	0

Data Summary: Arizona

Point-In-Time Count Summary

	2015	2016	2017	2018	2019	2018-19 Change	% Change
Number of Sheltered Persons in Families	3,115	2,899	2,358	2,445	2,376	-69	-3%
Number of Unsheltered Persons in Families	233	149	101	161	93	-68	-42%
Number of Sheltered Individuals	3,824	3,564	3,423	3,354	3,099	-255	-8%
Number of Unsheltered Individuals	2,724	3,095	3,065	3,905	4,439	534	14%
Total Homeless Persons	9,896	9,707	8,947	9,865	10,007	142	1%
Number of Sheltered Families	937	877	664	745	723	-22	-3%
Number of Unsheltered Families	65	40	25	47	22	-25	-53%
Number of Total Families	1,002	917	689	792	745	-47	-6%
Sheltered Chronically Homeless Individuals	297	423	492	564	599	35	6%
Unsheltered Chronically Homeless Individuals	949	904	971	1,176	1,167	-9	-1%
Total Chronically Homeless Individuals	1,246	1,327	1,463	1,740	1,766	26	1%
Sheltered Veterans	672	663	641	540	598	58	11%
Unsheltered Veterans	548	373	329	353	312	-41	-12%
Total Veterans	1,220	1,036	970	893	910	17	2%
Sheltered Unaccompanied Youth (up to 24)	450	431	345	397	307	-90	-23%
Unsheltered Unaccompanied Youth (up to 24)	171	158	233	241	280	39	16%
Total Unaccompanied Youth (up to 24)	621	589	578	638	587	-51	-8%

System Performance Measures Summary

	2015	2016	2017	2018	2019	2018-19 Change	% Change
Rate People Return to Homelessness in 6 Months	10.4%	10.4%	11.4%	11.2%	11.2%	0%	N/A
Number of People who are Homeless for the First Time	17,450	17,660	17,514	16,426	16,911	485	3%
Rate People Exit from ES, SH, TH, and RRH to PH	33.8%	35.8%	37.6%	42.8%	43.8%	1%	N/A
Rate People in PSH and OPH Retain or Exit to PH	93.9%	94.6%	93.0%	93.0%	93.3%	0.3%	N/A

Housing Inventory Count Summary

	2015	2016	2017	2018	2019	2018-19 Change	% Change
Emergency Shelter (ES)	3,692	3,922	3,866	4,058	3,787	-271	-7%
Safe Haven (SH)	40	40	36	37	68	31	84%
Transitional Housing (TH)	3,741	2,980	1,978	2,588	2,713	125	5%
Permanent Supportive Housing (PSH)	6,789	7,504	8,625	9,255	9,238	-17	0%
Rapid Re-Housing (RRH)	1,256	1,902	1,536	2,522	2,512	-10	0%
Other Permanent Housing (OPH)	1,322	1,320	1,076	1,086	315	-771	-71%

Award Summary

	2015	2016	2017	2018	2019	2018-19 Change	% Change
Continuum of Care (CoC)	\$39,320,869	\$37,833,350	\$38,526,473	\$40,629,348	\$41,350,799	\$721,451	2%
Emergency Solutions Grants (ESG)	\$4,234,292	\$4,403,372	\$5,269,566	\$4,496,161	\$4,712,559	\$216,398	5%
Youth Homelessness Demonstration Program (YHDP)	N/A	--	--	\$4,558,069	--	--	--