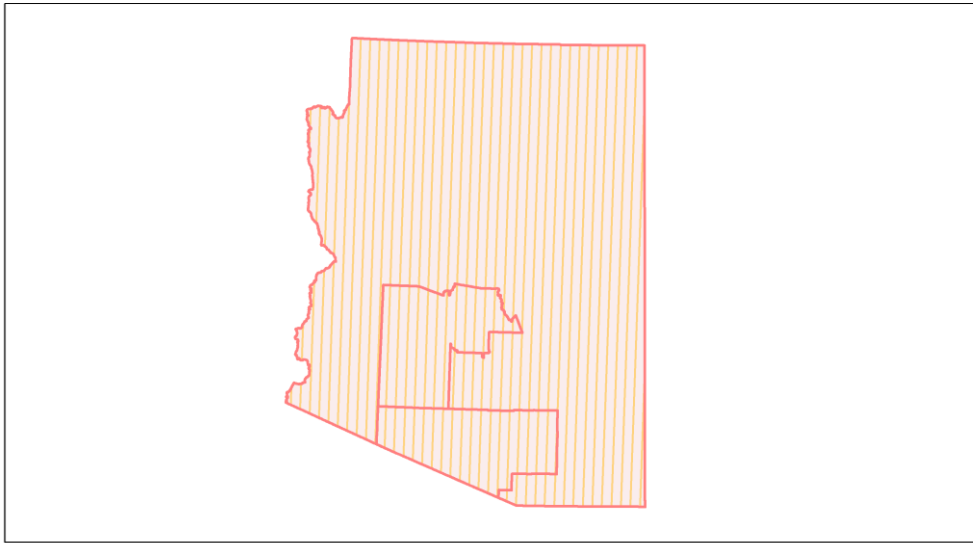
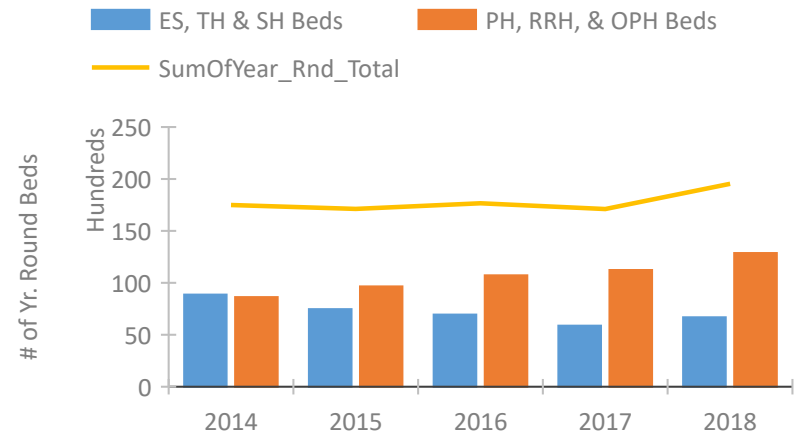


Arizona Continuum of Care Performance Profile

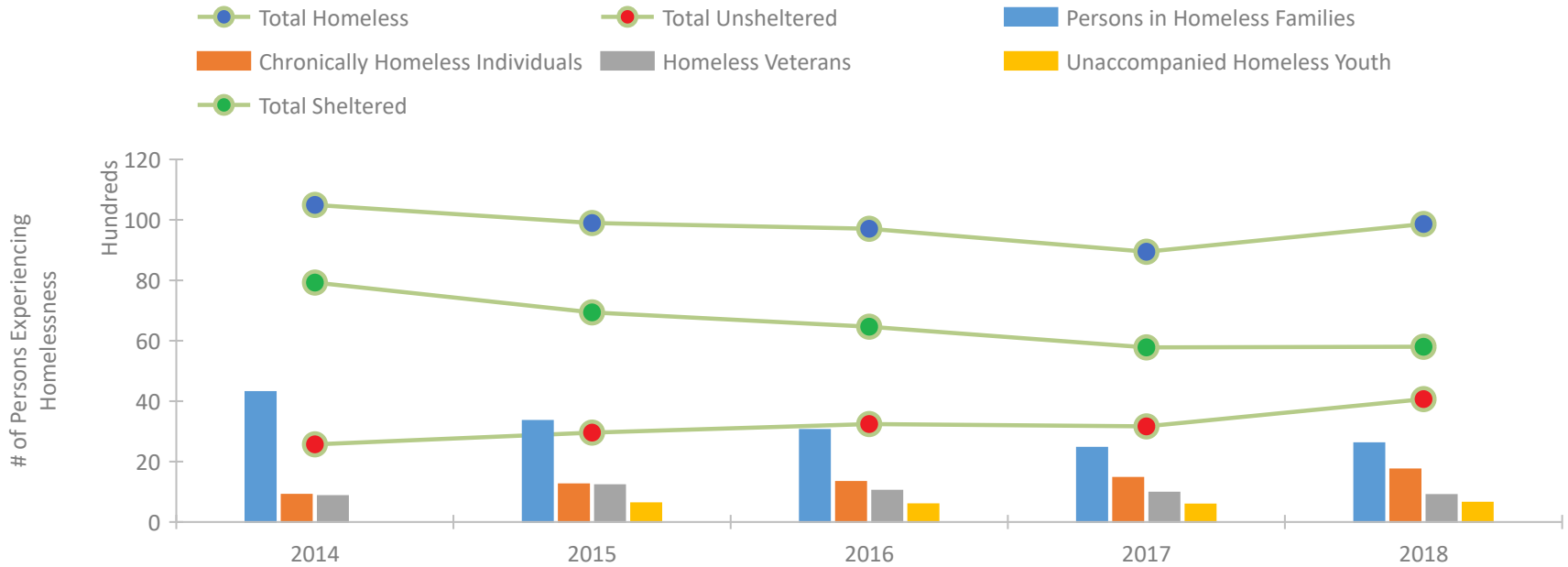


2018 CoC Boundaries 2017 CoC Boundaries

Housing Inventory Count by Program Type

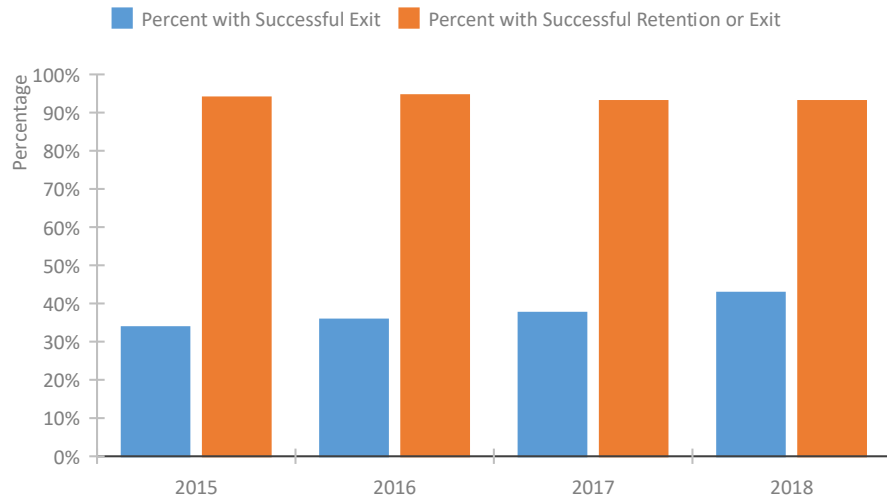


Homeless Population – Point-in-Time (PIT) Count

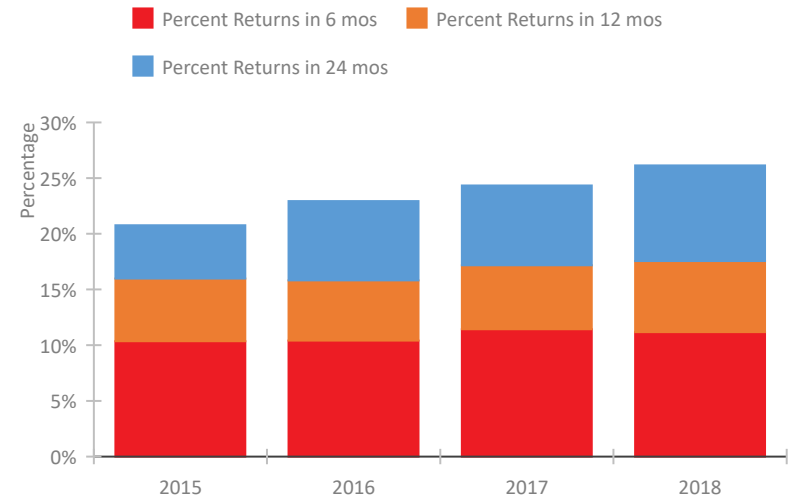


Arizona Continuum of Care Performance Profile

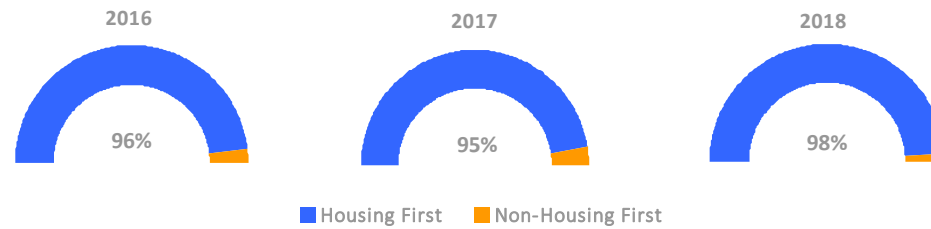
Exits to Permanent Housing by Program Type



Returns to Homelessness Over Time



Proportion of Housing First Projects by Year



Number of Projects by Year

	2016	2017	2018
Housing First Projects	95	92	92
Non-Housing First Projects	4	5	2

Data Summary: Arizona

Point-In-Time Count Summary

	2014	2015	2016	2017	2018	2017-18 Change	% Change
Number of Sheltered Persons in Families	4,075	3,115	2,899	2,358	2,445	87	4%
Number of Unsheltered Persons in Families	226	233	149	101	161	60	59%
Number of Sheltered Individuals	3,790	3,736	3,470	3,378	3,304	-74	-2%
Number of Unsheltered Individuals	2,340	2,720	3,087	3,055	3,905	850	28%
Total Homeless Persons	10,431	9,804	9,605	8,892	9,815	923	10%
Number of Sheltered Families	1,234	937	877	664	745	81	12%
Number of Unsheltered Families	61	65	40	25	47	22	88%
Number of Total Families	1,295	1,002	917	689	792	103	15%
Sheltered Chronically Homeless Individuals	303	297	423	492	564	72	15%
Unsheltered Chronically Homeless Individuals	601	949	904	971	1,176	205	21%
Total Chronically Homeless Individuals	904	1,246	1,327	1,463	1,740	277	19%
Sheltered Veterans	635	672	663	641	540	-101	-16%
Unsheltered Veterans	223	548	373	329	353	24	7%
Total Veterans	858	1,220	1,036	970	893	-77	-8%
Sheltered Unaccompanied Youth (up to 24)	--	450	431	345	397	52	15%
Unsheltered Unaccompanied Youth (up to 24)	--	171	158	233	241	8	3%
Total Unaccompanied Youth (up to 24)	--	621	589	578	638	60	10%

System Performance Measures Summary

	2014	2015	2016	2017	2018	2017-18 Change	% Change
Rate People Return to Homelessness in 6 Months	N/A	10.4%	10.4%	11.4%	11.2%	-0.3%	N/A
Number of People who are Homeless for the First Time	N/A	17,450	17,660	17,514	16,426	-1,088	-6.2%
Rate People Exit from ES, SH, TH, and RRH to PH	N/A	33.8%	35.8%	37.6%	42.8%	5.2%	N/A
Rate People in PSH and OPH Retain or Exit to PH	N/A	93.9%	94.6%	93.0%	93.0%	0%	N/A

Housing Inventory Count Summary

	2014	2015	2016	2017	2018	2017-18 Change	% Change
Emergency Shelter (ES)	4,481	3,692	3,922	3,866	4,058	192	5%
Safe Haven (SH)	40	40	40	36	37	1	3%
Transitional Housing (TH)	4,352	3,741	2,980	1,978	2,588	610	31%
Permanent Supportive Housing (PSH)	7,358	6,789	7,504	8,625	9,255	630	7%
Rapid Re-Housing (RRH)	441	1,256	1,902	1,536	2,522	986	64%
Other Permanent Housing (OPH)	707	1,322	1,320	1,076	1,086	10	1%

Award Summary

	2014	2015	2016	2017	2018	2017-18 Change	% Change
Continuum of Care (CoC)	\$39,258,830	\$39,320,869	\$37,833,350	\$38,526,473	\$40,629,348	\$2,102,875	5%
Emergency Solutions Grants (ESG)	\$3,882,805	\$4,234,292	\$4,403,372	\$5,269,566	\$4,496,161	(\$773,405)	-15%
Youth Homelessness Demonstration Program (YHDP)	N/A	N/A	--	--	\$4,558,069	--	--