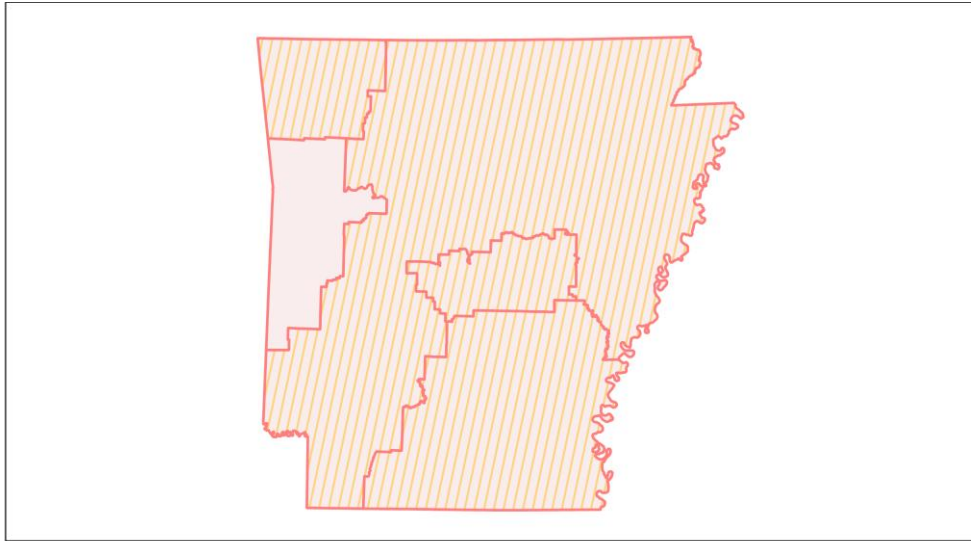
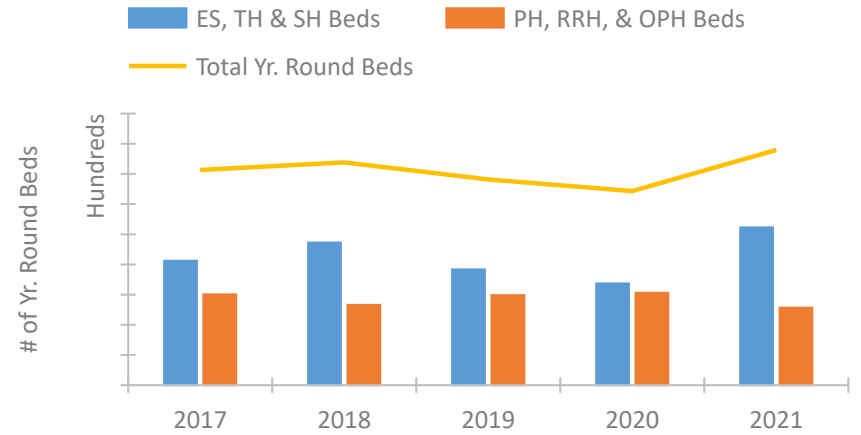


## Arkansas Continuum of Care Performance Profile

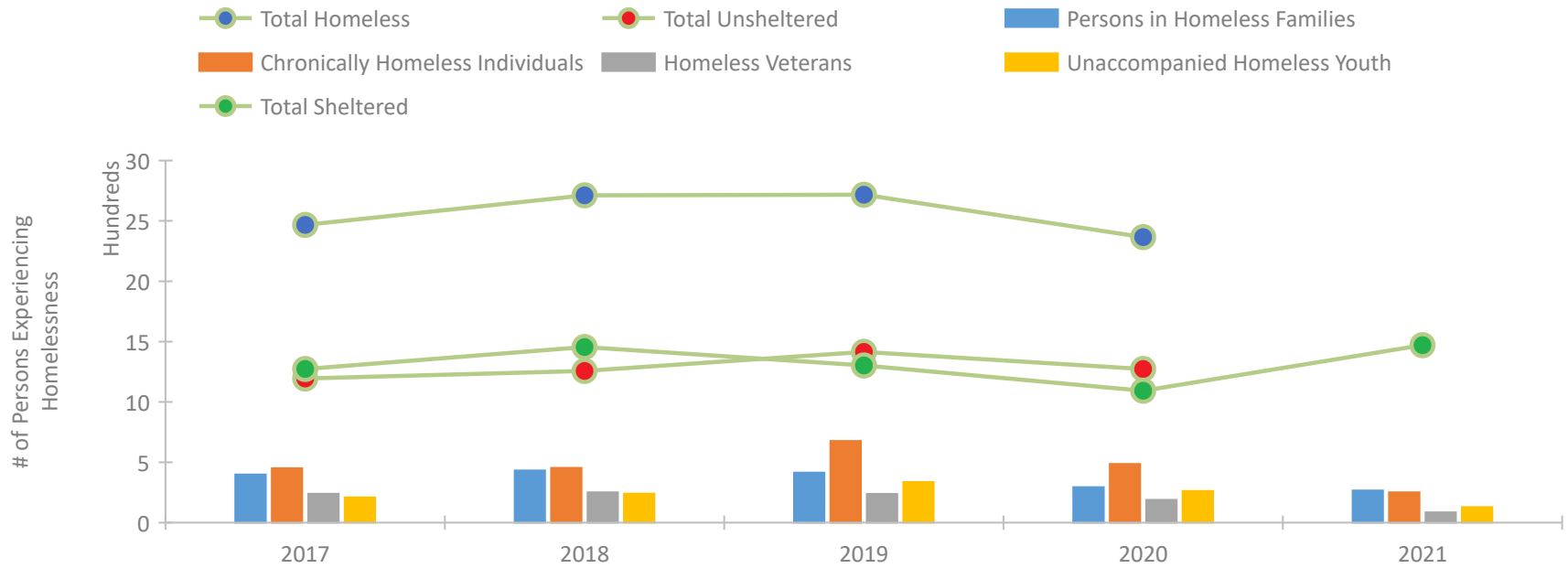


2021 CoC Boundaries 2020 CoC Boundaries

### Housing Inventory Count by Program Type



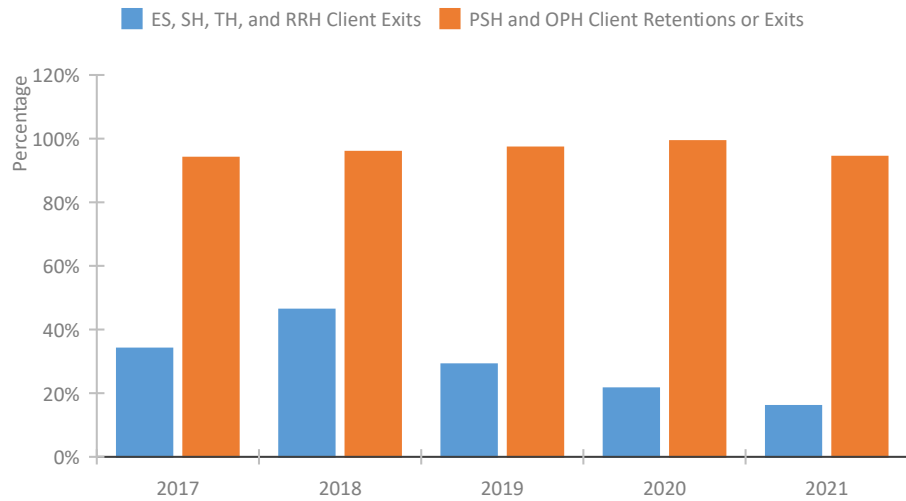
### Homeless Population – Point-in-Time (PIT) Count\*



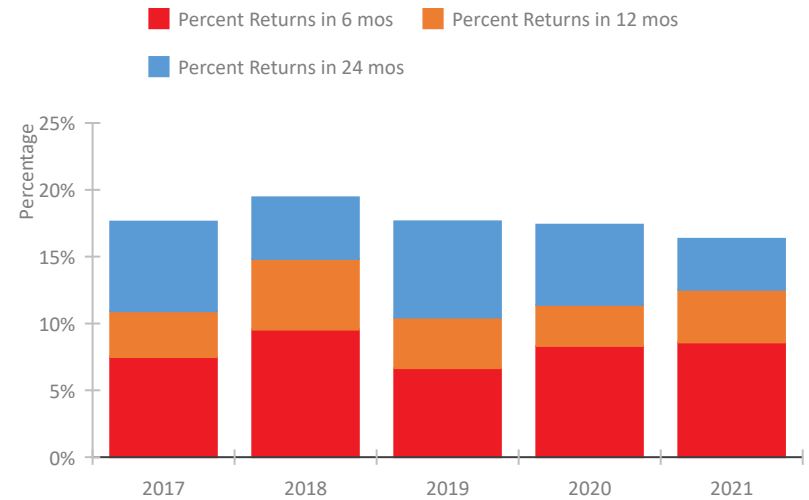
\*In 2021, HUD gave communities the option to cancel or modify the unsheltered survey portion of their counts based on the potential risk of COVID-19 transmission associated with conducting an in-person survey. As a result, HUD has excluded the unsheltered population sub-totals and all unsheltered sub-population data for this reporting period. The user is cautioned that the unsheltered and total homeless counts reported here may be missing data.

## Arkansas Continuum of Care Performance Profile

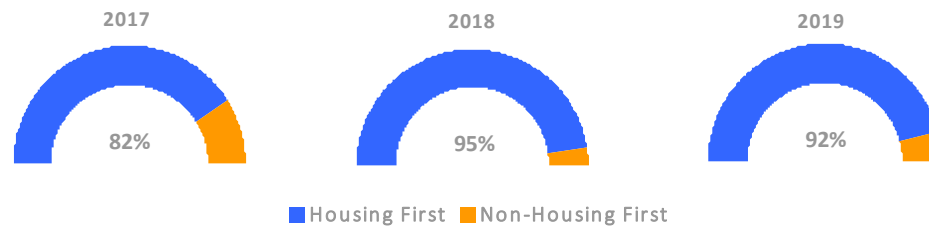
### Exits to Permanent Housing by Program Type



### Returns to Homelessness Over Time



### Proportion of Housing First Projects by Year†



#### Number of Projects by Year

	2017	2018	2019
Housing First Projects	23	20	11
Non-Housing First Projects	5	1	1

†2021 Data unavailable at the time of report publication. In 2020 HUD awarded renewal projects noncompetitively, therefore no new data was collected and Housing First data remains the same from 2019 to 2020.

## Data Summary: Arkansas

### Point-In-Time Count Summary\*

	2017	2018	2019	2020	2021	2020-21 Change	% Change
Number of Sheltered Persons in Families	336	374	330	223	266	43	19%
Number of Unsheltered Persons in Families	63	58	84	70	0	-70	-100%
Number of Sheltered Individuals	937	1,081	972	870	1,204	334	38%
Number of Unsheltered Individuals	1,131	1,199	1,331	1,203	--	--	--
<b>Total Homeless Persons</b>	<b>2,467</b>	<b>2,712</b>	<b>2,717</b>	<b>2,366</b>	<b>1,470</b>	<b>-896</b>	<b>-38%</b>
Number of Sheltered Families	100	127	100	75	88	13	17%
Number of Unsheltered Families	21	20	32	26	--	--	--
<b>Number of Total Families</b>	<b>121</b>	<b>147</b>	<b>132</b>	<b>101</b>	<b>88</b>	<b>-13</b>	<b>-13%</b>
Sheltered Chronically Homeless Individuals	138	153	223	105	251	146	139%
Unsheltered Chronically Homeless Individuals	312	300	453	381	--	--	--
<b>Total Chronically Homeless Individuals</b>	<b>450</b>	<b>453</b>	<b>676</b>	<b>486</b>	<b>251</b>	<b>-235</b>	<b>-48%</b>
Sheltered Veterans	130	150	153	107	85	-22	-21%
Unsheltered Veterans	109	101	85	81	--	--	--
<b>Total Veterans</b>	<b>239</b>	<b>251</b>	<b>238</b>	<b>188</b>	<b>85</b>	<b>-103</b>	<b>-55%</b>
Sheltered Unaccompanied Youth (up to 24)	87	122	143	88	129	41	47%
Unsheltered Unaccompanied Youth (up to 24)	121	118	193	174	--	--	--
<b>Total Unaccompanied Youth (up to 24)</b>	<b>208</b>	<b>240</b>	<b>336</b>	<b>262</b>	<b>129</b>	<b>-133</b>	<b>-51%</b>

### System Performance Measures Summary

	2017	2018	2019	2020	2021	2020-21 Change	% Change
Rate People Return to Homelessness in 6 Months	7.5%	9.5%	6.7%	8.3%	8.6%	0.3%	N/A
Number of People who are Homeless for the First Time	3,502	2,516	3,392	2,420	2,748	328	13.6%
Rate People Exit from ES, SH, TH, and RRH to PH	34.0%	46.3%	29.0%	21.5%	16.0%	-5.5%	N/A
Rate People in PSH and OPH Retain or Exit to PH	94.0%	95.8%	97.2%	99.2%	94.3%	-4.9%	N/A

### Housing Inventory Count Summary

	2017	2018	2019	2020	2021	2020-21 Change	% Change
Emergency Shelter (ES)	1,513	1,738	1,497	1,330	2,238	908	68%
Transitional Housing (TH)	549	624	420	356	377	21	6%
Permanent Supportive Housing (PSH)	1,123	1,148	1,191	1,040	763	-277	-27%
Rapid Re-Housing (RRH)	343	174	300	490	519	29	6%

### Award Summary

	2017	2018	2019	2020	2021	2020-21 Change	% Change
<b>Continuum of Care (CoC)</b>	\$4,270,569	\$4,124,696	\$4,195,013	\$4,383,379	\$4,205,141	(\$178,238)	-4%
<b>Emergency Solutions Grants (ESG)</b>	\$2,383,028	\$2,071,846	\$2,162,085	\$2,264,323	\$2,261,347	(\$2,976)	0%

\*In 2021, HUD gave communities the option to cancel or modify the unsheltered survey portion of their counts based on the potential risk of COVID-19 transmission associated with conducting an in-person survey. As a result, HUD has excluded the unsheltered population sub-totals and all unsheltered sub-population data for this reporting period. The user is cautioned that the unsheltered and total homeless counts reported here may be missing data.