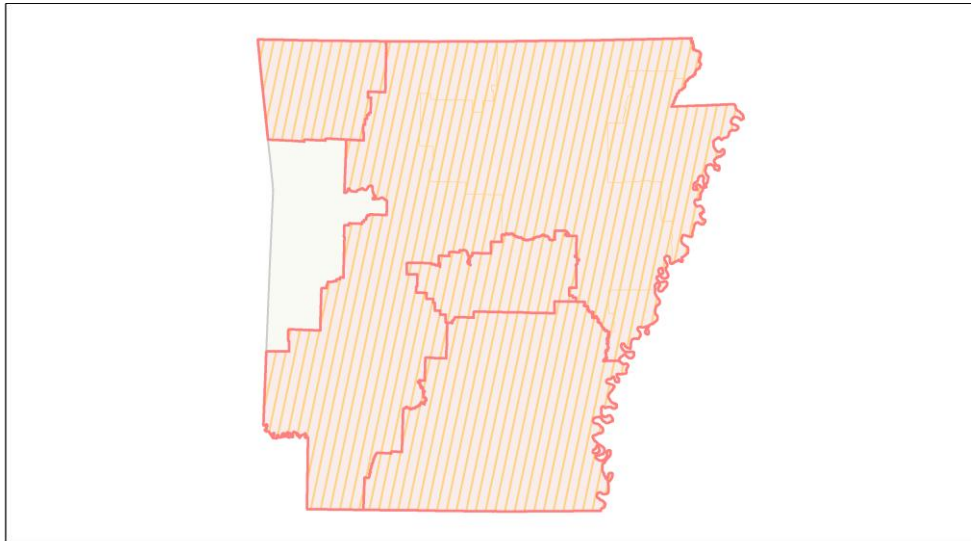
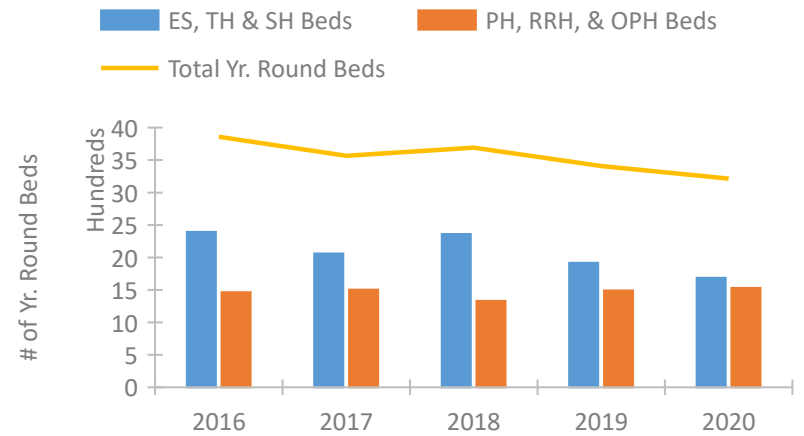


Arkansas Continuum of Care Performance Profile

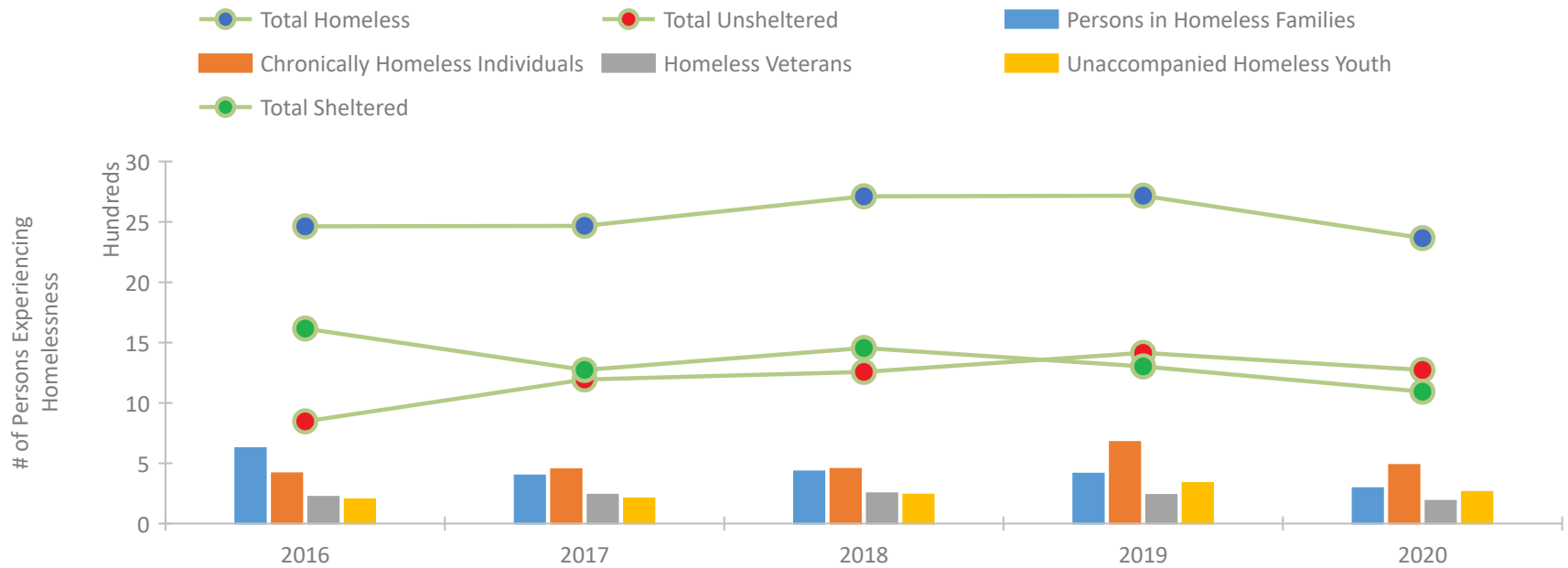


2020 CoC Boundaries 2019 CoC Boundaries

Housing Inventory Count by Program Type



Homeless Population – Point-in-Time (PIT) Count

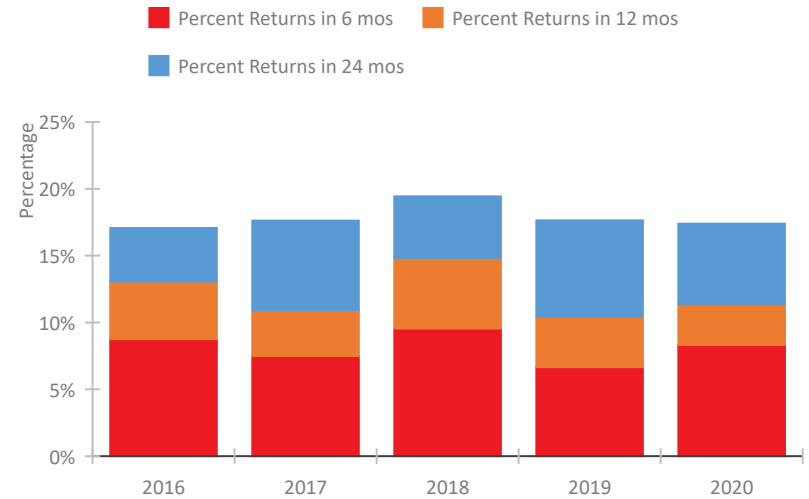


Arkansas Continuum of Care Performance Profile

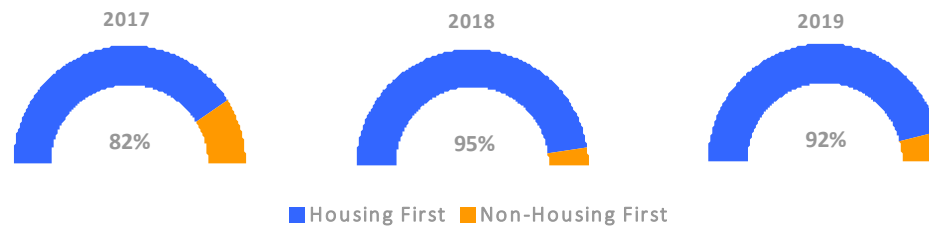
Exits to Permanent Housing by Program Type



Returns to Homelessness Over Time



Proportion of Housing First Projects by Year*



Number of Projects by Year			
	2017	2018	2019
Housing First Projects	23	20	11
Non-Housing First Projects	5	1	1

*In 2020 HUD awarded renewal projects noncompetitively, therefore no new data was collected and Housing First data remains the same from 2019 to 2020.

Data Summary: Arkansas

Point-In-Time Count Summary

	2016	2017	2018	2019	2020	2019-20 Change	% Change
Number of Sheltered Persons in Families	476	336	374	330	223	-107	-32%
Number of Unsheltered Persons in Families	149	63	58	84	70	-14	-17%
Number of Sheltered Individuals	1,140	937	1,081	972	870	-102	-10%
Number of Unsheltered Individuals	698	1,131	1,199	1,331	1,203	-128	-10%
Total Homeless Persons	2,463	2,467	2,712	2,717	2,366	-351	-13%
Number of Sheltered Families	147	100	127	100	75	-25	-25%
Number of Unsheltered Families	44	21	20	32	26	-6	-19%
Number of Total Families	191	121	147	132	101	-31	-23%
Sheltered Chronically Homeless Individuals	163	138	153	223	105	-118	-53%
Unsheltered Chronically Homeless Individuals	254	312	300	453	381	-72	-16%
Total Chronically Homeless Individuals	417	450	453	676	486	-190	-28%
Sheltered Veterans	159	130	150	153	107	-46	-30%
Unsheltered Veterans	63	109	101	85	81	-4	-5%
Total Veterans	222	239	251	238	188	-50	-21%
Sheltered Unaccompanied Youth (up to 24)	117	87	122	143	88	-55	-38%
Unsheltered Unaccompanied Youth (up to 24)	84	121	118	193	174	-19	-10%
Total Unaccompanied Youth (up to 24)	201	208	240	336	262	-74	-22%

System Performance Measures Summary

	2016	2017	2018	2019	2020	2019-20 Change	% Change
Rate People Return to Homelessness in 6 Months	8.7%	7.5%	9.5%	6.7%	8.3%	1.7%	N/A
Number of People who are Homeless for the First Time	3,902	3,502	2,516	3,392	2,420	-972	-28.7%
Rate People Exit from ES, SH, TH, and RRH to PH	30.5%	34.0%	46.3%	29.0%	21.5%	-7.5%	N/A
Rate People in PSH and OPH Retain or Exit to PH	95.0%	94.0%	95.8%	97.2%	99.2%	2%	N/A

Housing Inventory Count Summary

	2016	2017	2018	2019	2020	2019-20 Change	% Change
Emergency Shelter (ES)	1,731	1,513	1,738	1,497	1,330	-167	-11%
Transitional Housing (TH)	663	549	624	420	356	-64	-15%
Permanent Supportive Housing (PSH)	1,149	1,123	1,148	1,191	1,040	-151	-13%
Rapid Re-Housing (RRH)	254	343	174	300	490	190	63%

Award Summary

	2016	2017	2018	2019	2020	2019-20 Change	% Change
Continuum of Care (CoC)	\$4,293,758	\$4,270,569	\$4,124,696	\$4,195,013	\$4,383,379	\$188,366	4%
Emergency Solutions Grants (ESG)	\$2,081,178	\$2,383,028	\$2,071,846	\$2,162,085	\$2,264,323	\$102,238	5%