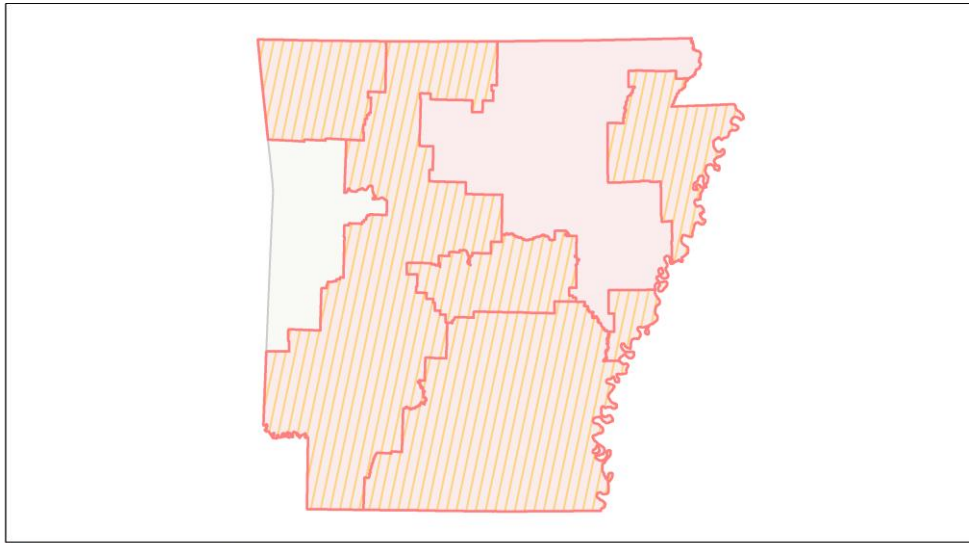
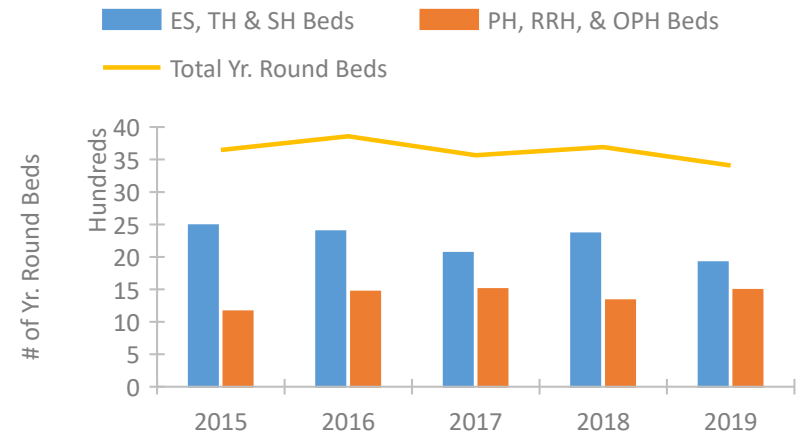


Arkansas Continuum of Care Performance Profile

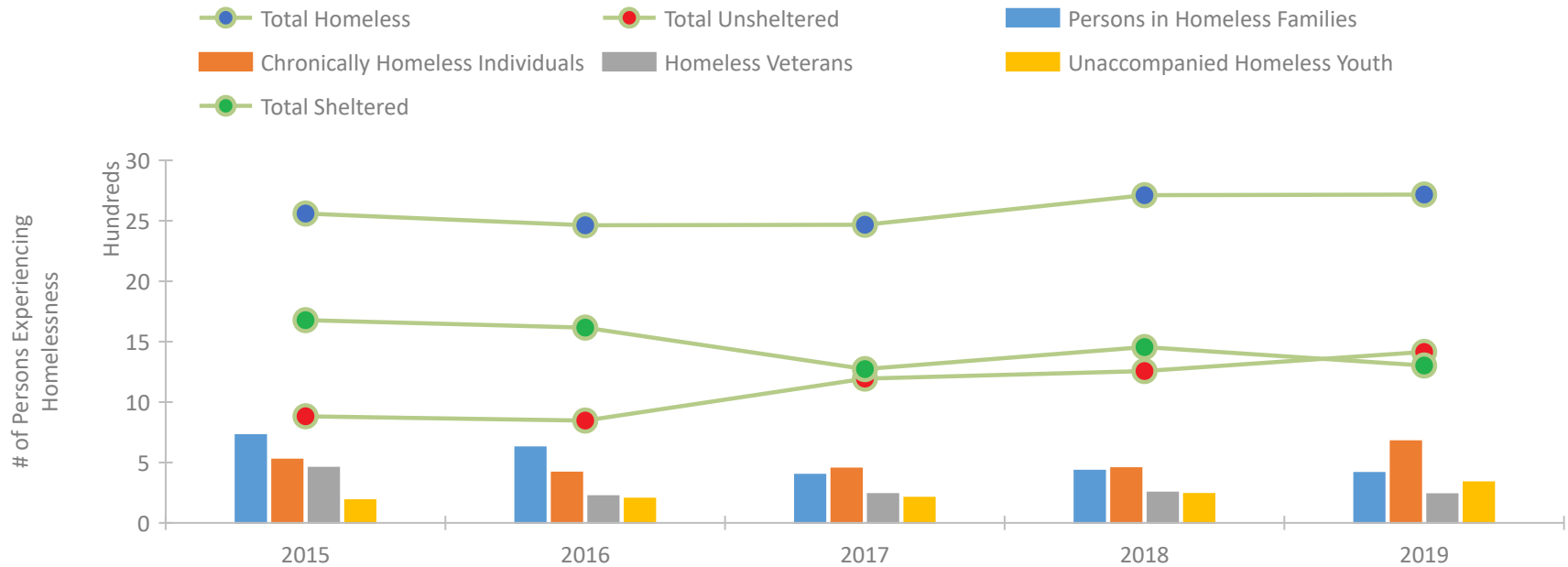


2019 CoC Boundaries 2018 CoC Boundaries

Housing Inventory Count by Program Type

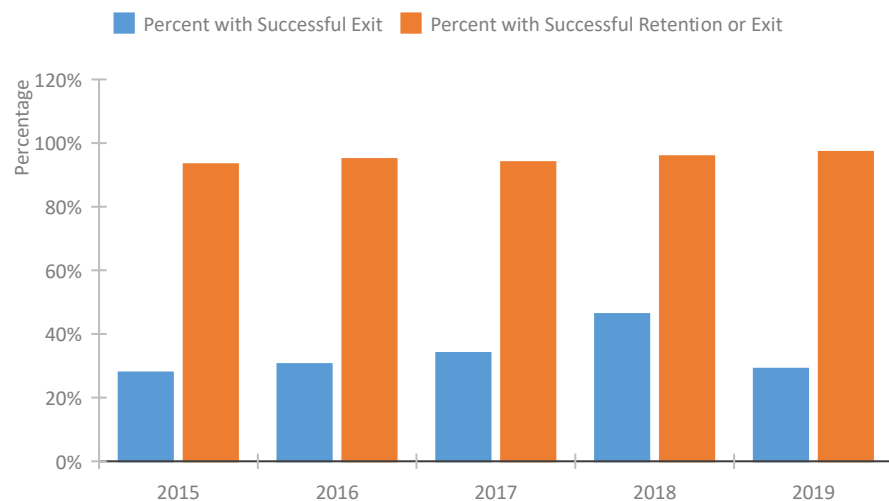


Homeless Population – Point-in-Time (PIT) Count

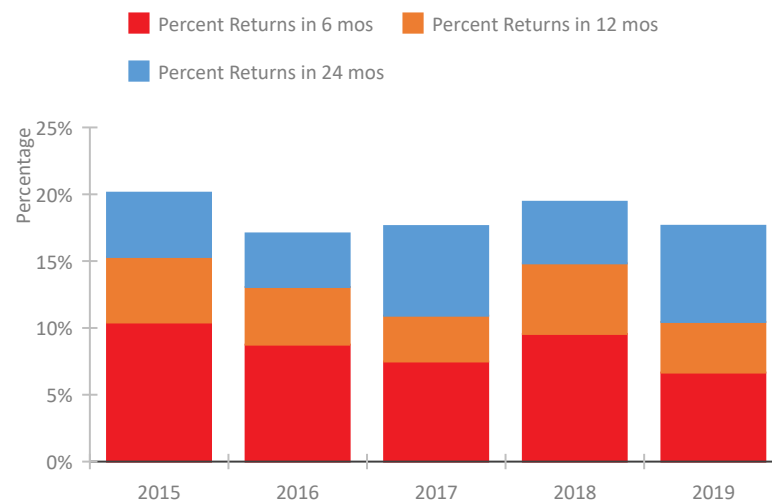


Arkansas Continuum of Care Performance Profile

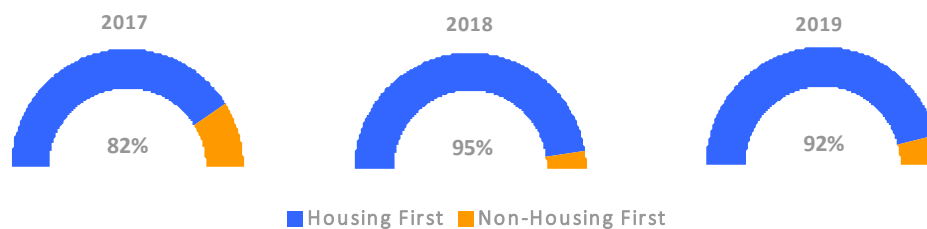
Exits to Permanent Housing by Program Type



Returns to Homelessness Over Time



Proportion of Housing First Projects by Year



Number of Projects by Year

	2017	2018	2019
Housing First Projects	23	20	11
Non-Housing First Projects	5	1	1

Data Summary: Arkansas

Point-In-Time Count Summary

	2015	2016	2017	2018	2019	2018-19 Change	% Change
Number of Sheltered Persons in Families	589	476	336	374	330	-44	-12%
Number of Unsheltered Persons in Families	138	149	63	58	84	26	45%
Number of Sheltered Individuals	1,089	1,140	937	1,081	972	-109	-10%
Number of Unsheltered Individuals	744	698	1,131	1,199	1,331	132	11%
Total Homeless Persons	2,560	2,463	2,467	2,712	2,717	5	0%
Number of Sheltered Families	198	147	100	127	100	-27	-21%
Number of Unsheltered Families	42	44	21	20	32	12	60%
Number of Total Families	240	191	121	147	132	-15	-10%
Sheltered Chronically Homeless Individuals	234	163	138	153	223	70	46%
Unsheltered Chronically Homeless Individuals	290	254	312	300	453	153	51%
Total Chronically Homeless Individuals	524	417	450	453	676	223	49%
Sheltered Veterans	385	159	130	150	153	3	2%
Unsheltered Veterans	71	63	109	101	85	-16	-16%
Total Veterans	456	222	239	251	238	-13	-5%
Sheltered Unaccompanied Youth (up to 24)	95	117	87	122	143	21	17%
Unsheltered Unaccompanied Youth (up to 24)	93	84	121	118	193	75	64%
Total Unaccompanied Youth (up to 24)	188	201	208	240	336	96	40%

System Performance Measures Summary

	2015	2016	2017	2018	2019	2018-19 Change	% Change
Rate People Return to Homelessness in 6 Months	10.4%	8.7%	7.5%	9.5%	6.7%	-2.9%	N/A
Number of People who are Homeless for the First Time	4,088	3,902	3,502	2,516	3,392	876	34.8%
Rate People Exit from ES, SH, TH, and RRH to PH	27.9%	30.5%	34.0%	46.3%	29.0%	-17.2%	N/A
Rate People in PSH and OPH Retain or Exit to PH	93.3%	95.0%	94.0%	95.8%	97.2%	1.4%	N/A

Housing Inventory Count Summary

	2015	2016	2017	2018	2019	2018-19 Change	% Change
Emergency Shelter (ES)	1,727	1,731	1,513	1,738	1,497	-241	-14%
Transitional Housing (TH)	759	663	549	624	420	-204	-33%
Permanent Supportive Housing (PSH)	708	1,149	1,123	1,148	1,191	43	4%
Rapid Re-Housing (RRH)	124	254	343	174	300	126	72%

Award Summary

	2015	2016	2017	2018	2019	2018-19 Change	% Change
Continuum of Care (CoC)	\$4,443,988	\$4,293,758	\$4,270,569	\$4,124,696	\$4,195,013	\$70,317	2%
Emergency Solutions Grants (ESG)	\$2,119,435	\$2,081,178	\$2,383,028	\$2,071,846	\$2,162,085	\$90,239	4%