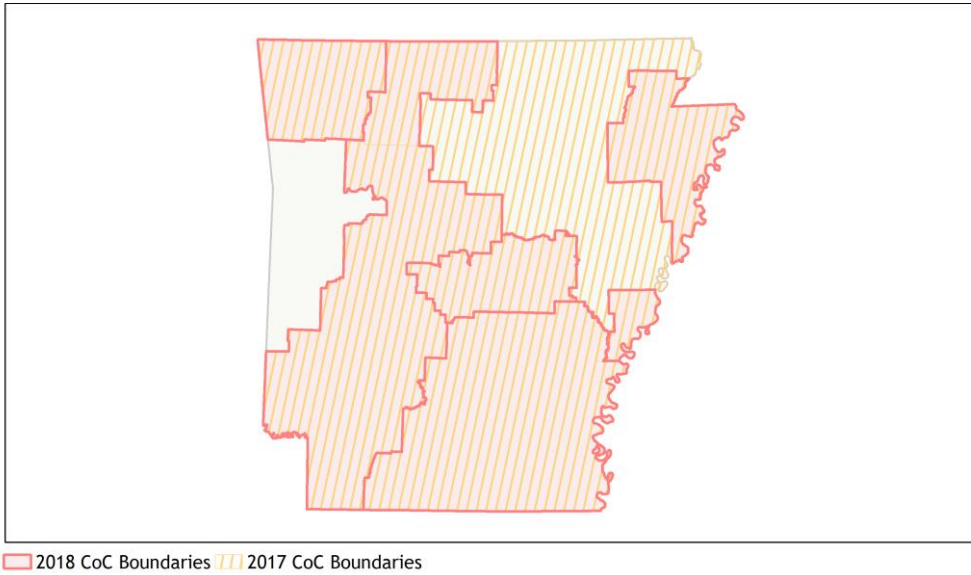
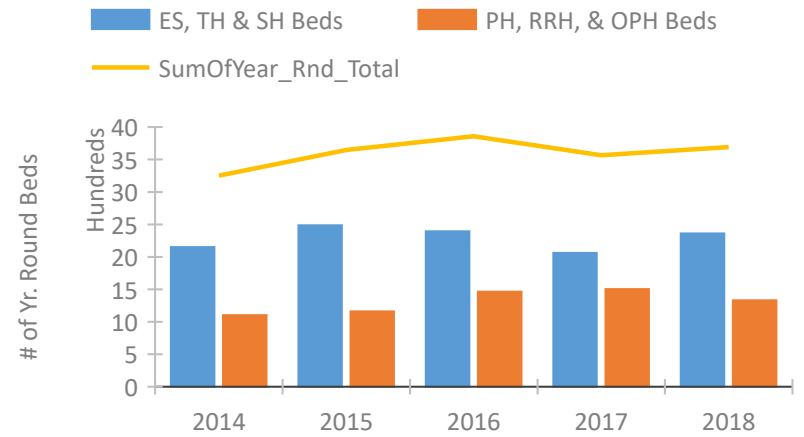


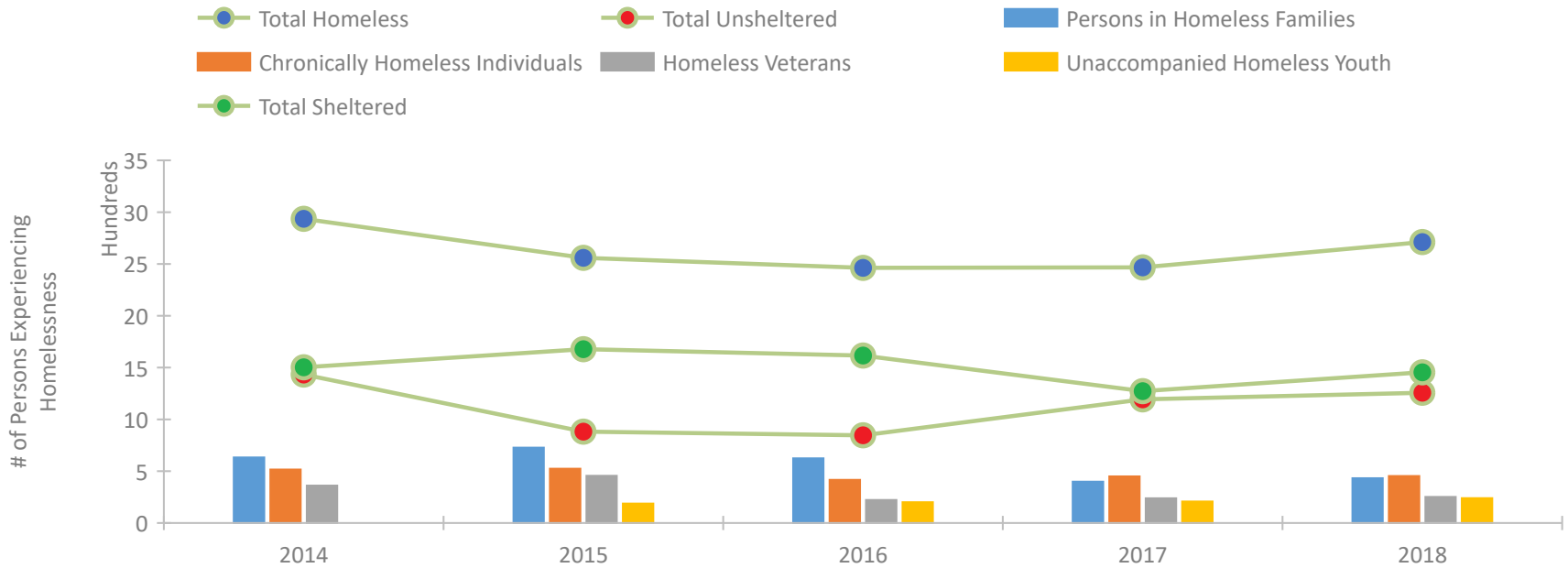
Arkansas Continuum of Care Performance Profile



Housing Inventory Count by Program Type

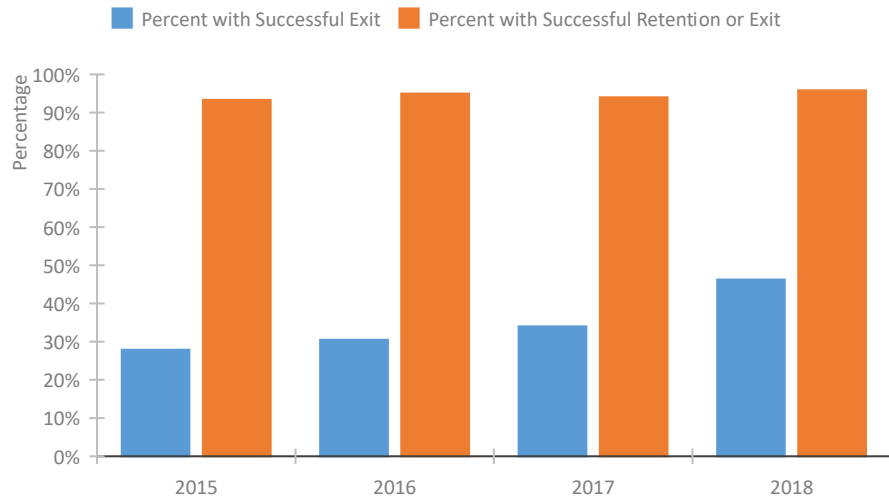


Homeless Population – Point-in-Time (PIT) Count

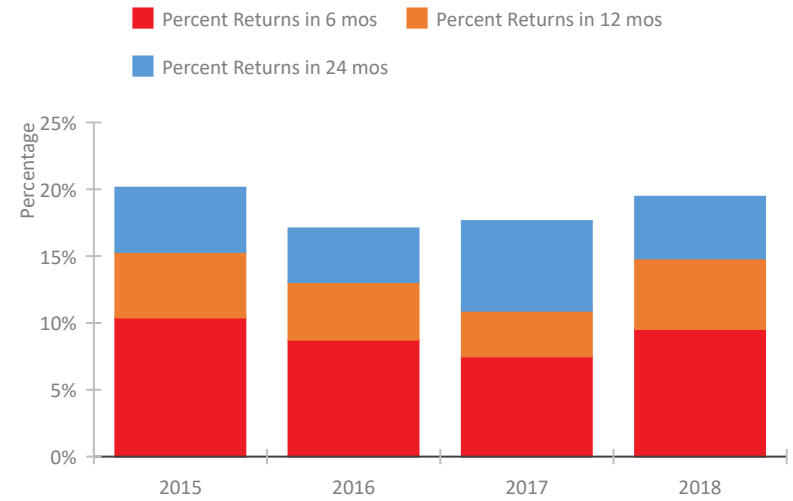


Arkansas Continuum of Care Performance Profile

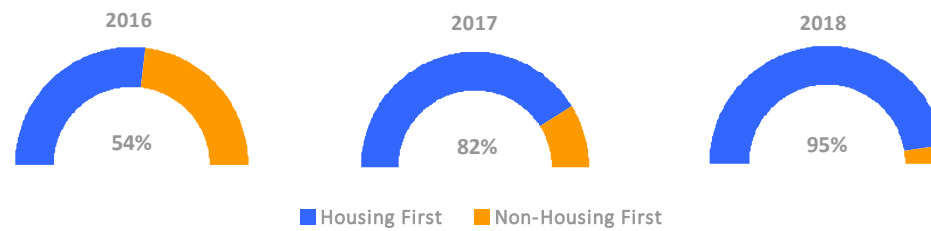
Exits to Permanent Housing by Program Type



Returns to Homelessness Over Time



Proportion of Housing First Projects by Year



Number of Projects by Year

	2016	2017	2018
Housing First Projects	14	23	20
Non-Housing First Projects	12	5	1

Data Summary: Arkansas

Point-In-Time Count Summary

	2014	2015	2016	2017	2018	2017-18 Change	% Change
Number of Sheltered Persons in Families	433	589	476	336	374	38	11%
Number of Unsheltered Persons in Families	200	138	149	63	58	-5	-8%
Number of Sheltered Individuals	1,047	1,070	1,091	916	1,041	125	14%
Number of Unsheltered Individuals	1,231	744	698	1,122	1,189	67	6%
Total Homeless Persons	2,911	2,541	2,414	2,437	2,662	225	9%
Number of Sheltered Families	172	198	147	100	127	27	27%
Number of Unsheltered Families	68	42	44	21	20	-1	-5%
Number of Total Families	240	240	191	121	147	26	21%
Sheltered Chronically Homeless Individuals	82	234	163	138	153	15	11%
Unsheltered Chronically Homeless Individuals	434	290	254	312	300	-12	-4%
Total Chronically Homeless Individuals	516	524	417	450	453	3	1%
Sheltered Veterans	220	385	159	130	150	20	15%
Unsheltered Veterans	141	71	63	109	101	-8	-7%
Total Veterans	361	456	222	239	251	12	5%
Sheltered Unaccompanied Youth (up to 24)	--	95	117	87	122	35	40%
Unsheltered Unaccompanied Youth (up to 24)	--	93	84	121	118	-3	-2%
Total Unaccompanied Youth (up to 24)	--	188	201	208	240	32	15%

System Performance Measures Summary

	2014	2015	2016	2017	2018	2017-18 Change	% Change
Rate People Return to Homelessness in 6 Months	N/A	10.4%	8.7%	7.5%	9.5%	2.1%	N/A
Number of People who are Homeless for the First Time	N/A	4,088	3,902	3,502	2,516	-986	-28.2%
Rate People Exit from ES, SH, TH, and RRH to PH	N/A	27.9%	30.5%	34.0%	46.3%	12.3%	N/A
Rate People in PSH and OPH Retain or Exit to PH	N/A	93.3%	95.0%	94.0%	95.8%	1.8%	N/A

Housing Inventory Count Summary

	2014	2015	2016	2017	2018	2017-18 Change	% Change
Emergency Shelter (ES)	1,466	1,727	1,731	1,513	1,738	225	15%
Transitional Housing (TH)	685	759	663	549	624	75	14%
Permanent Supportive Housing (PSH)	923	708	1,149	1,123	1,148	25	2%
Rapid Re-Housing (RRH)	157	124	254	343	174	-169	-49%
Other Permanent Housing (OPH)	22	328	36	38	8	-30	-79%

Award Summary

	2014	2015	2016	2017	2018	2017-18 Change	% Change
Continuum of Care (CoC)	\$4,923,250	\$4,443,988	\$4,293,758	\$4,270,569	\$4,124,696	(\$145,873)	-3%
Emergency Solutions Grants (ESG)	\$1,967,063	\$2,119,435	\$2,081,178	\$2,383,028	\$2,071,846	(\$311,182)	-13%