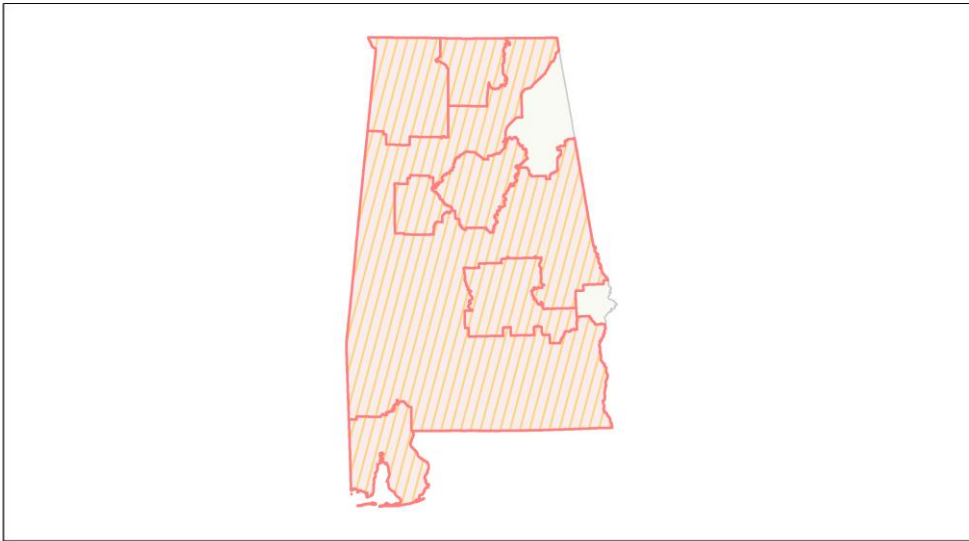
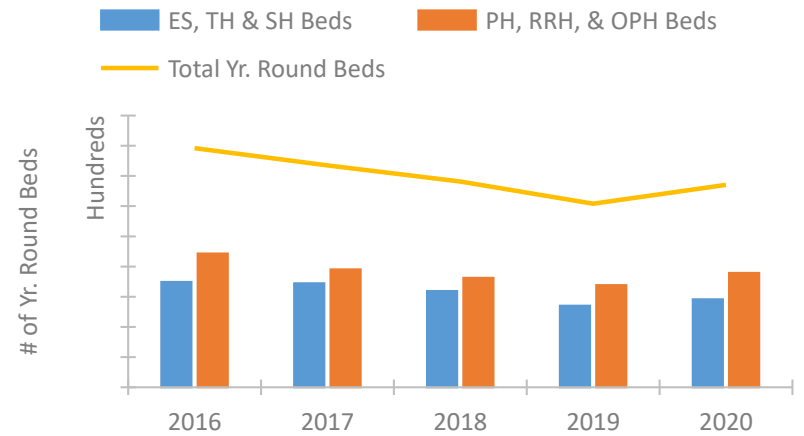


Alabama Continuum of Care Performance Profile

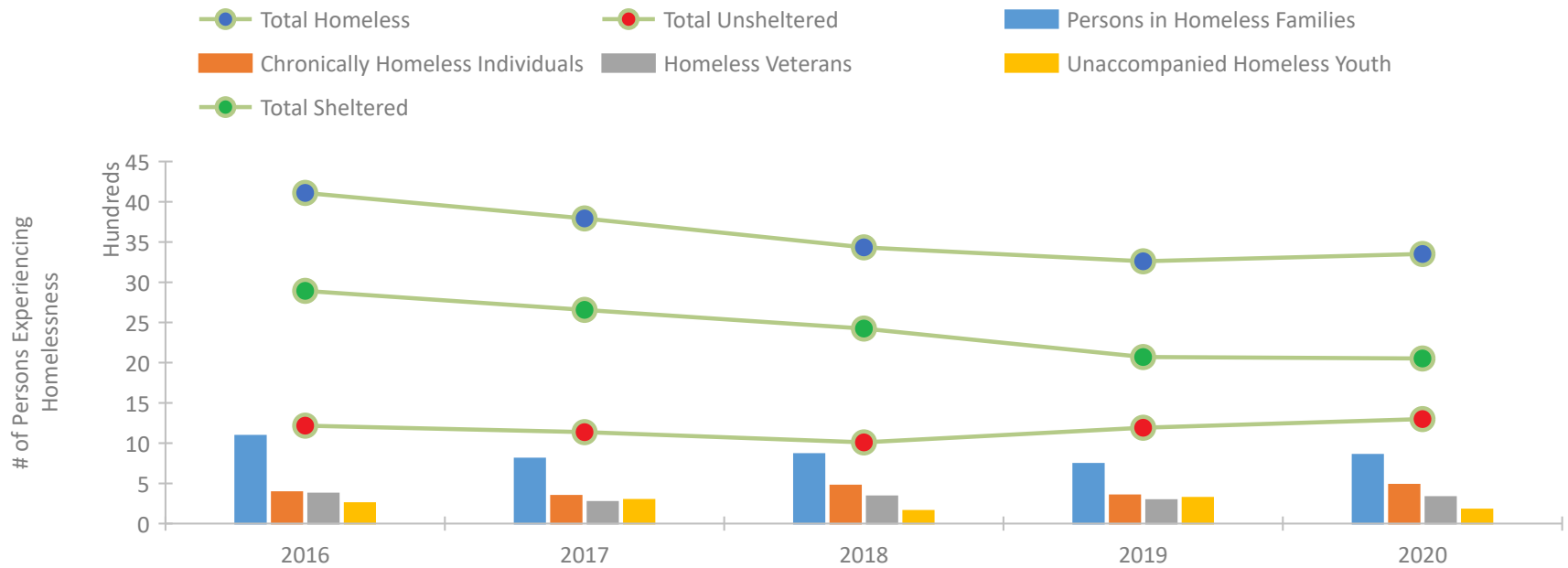


2020 CoC Boundaries 2019 CoC Boundaries

Housing Inventory Count by Program Type

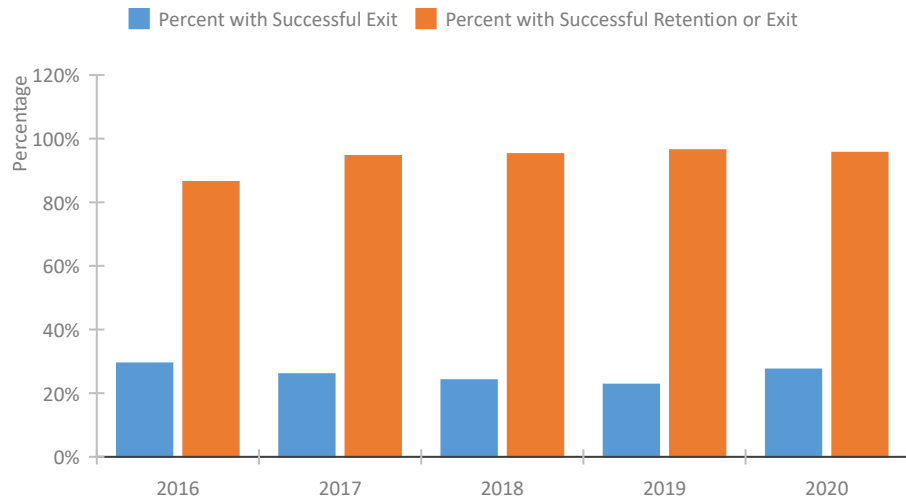


Homeless Population – Point-in-Time (PIT) Count

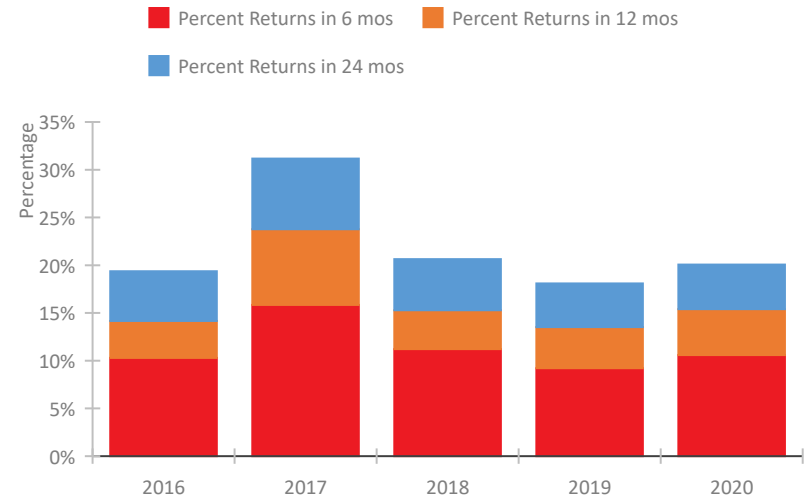


Alabama Continuum of Care Performance Profile

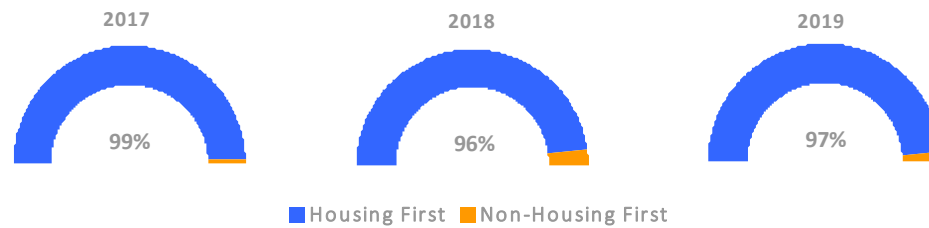
Exits to Permanent Housing by Program Type



Returns to Homelessness Over Time



Proportion of Housing First Projects by Year*



Number of Projects by Year			
	2017	2018	2019
Housing First Projects	234	44	37
Non-Housing First Projects	2	2	1

*In 2020 HUD awarded renewal projects noncompetitively, therefore no new data was collected and Housing First data remains the same from 2019 to 2020.

Data Summary: Alabama

Point-In-Time Count Summary

	2016	2017	2018	2019	2020	2019-20 Change	% Change
Number of Sheltered Persons in Families	876	706	731	641	759	118	18%
Number of Unsheltered Persons in Families	216	102	133	101	95	-6	-6%
Number of Sheltered Individuals	2,017	1,950	1,693	1,429	1,293	-136	-10%
Number of Unsheltered Individuals	1,002	1,035	877	1,090	1,204	114	10%
Total Homeless Persons	4,111	3,793	3,434	3,261	3,351	90	3%
Number of Sheltered Families	293	229	243	207	238	31	15%
Number of Unsheltered Families	63	33	37	29	29	0	-0%
Number of Total Families	356	262	280	236	267	31	13%
Sheltered Chronically Homeless Individuals	163	152	277	221	251	30	14%
Unsheltered Chronically Homeless Individuals	227	192	195	129	232	103	80%
Total Chronically Homeless Individuals	390	344	472	350	483	133	38%
Sheltered Veterans	321	202	267	223	231	8	4%
Unsheltered Veterans	52	67	72	69	98	29	42%
Total Veterans	373	269	339	292	329	37	13%
Sheltered Unaccompanied Youth (up to 24)	173	182	113	102	103	1	1%
Unsheltered Unaccompanied Youth (up to 24)	81	112	45	218	72	-146	-67%
Total Unaccompanied Youth (up to 24)	254	294	158	320	175	-145	-45%

System Performance Measures Summary

	2016	2017	2018	2019	2020	2019-20 Change	% Change
Rate People Return to Homelessness in 6 Months	10.3%	15.8%	11.2%	9.2%	10.6%	1.4%	N/A
Number of People who are Homeless for the First Time	7,726	6,781	5,720	6,243	4,935	-1,308	-21%
Rate People Exit from ES, SH, TH, and RRH to PH	29.4%	25.9%	24.1%	22.7%	27.4%	4.8%	N/A
Rate People in PSH and OPH Retain or Exit to PH	86.4%	94.5%	95.1%	96.4%	95.6%	-0.8%	N/A

Housing Inventory Count Summary

	2016	2017	2018	2019	2020	2019-20 Change	% Change
Emergency Shelter (ES)	1,912	2,073	2,114	1,937	1,992	55	3%
Safe Haven (SH)	34	37	34	34	34	0	-0%
Transitional Housing (TH)	1,543	1,334	1,040	730	887	157	22%
Permanent Supportive Housing (PSH)	3,394	3,156	3,317	3,166	3,274	108	3%
Rapid Re-Housing (RRH)	927	637	309	208	477	269	129%
Other Permanent Housing (OPH)	113	113	--	8	40	32	400%

Award Summary

	2016	2017	2018	2019	2020	2019-20 Change	% Change
Continuum of Care (CoC)	\$17,172,393	\$17,802,978	\$17,027,297	\$17,258,451	\$18,199,132	\$940,681	5%
Emergency Solutions Grants (ESG)	\$3,600,416	\$4,302,008	\$3,575,850	\$3,686,180	\$3,794,725	\$108,545	3%