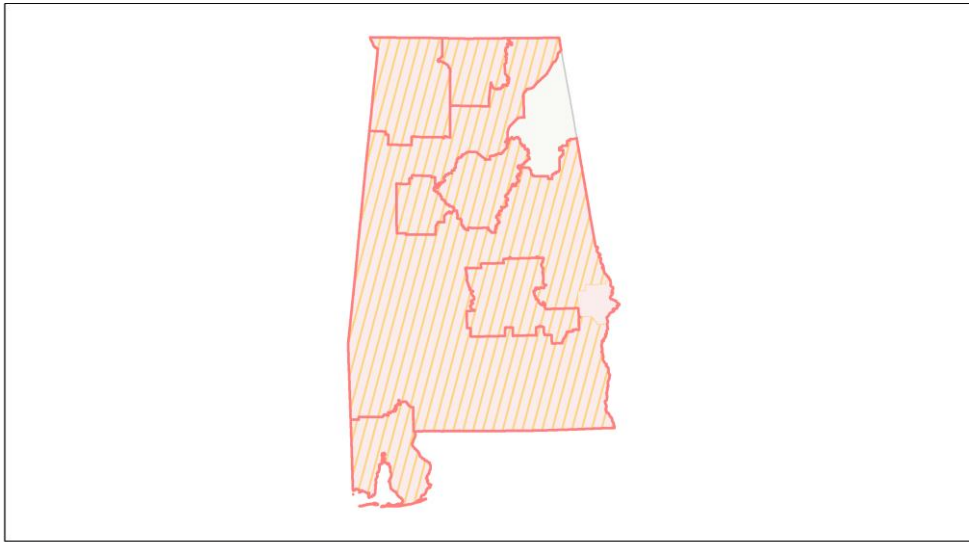
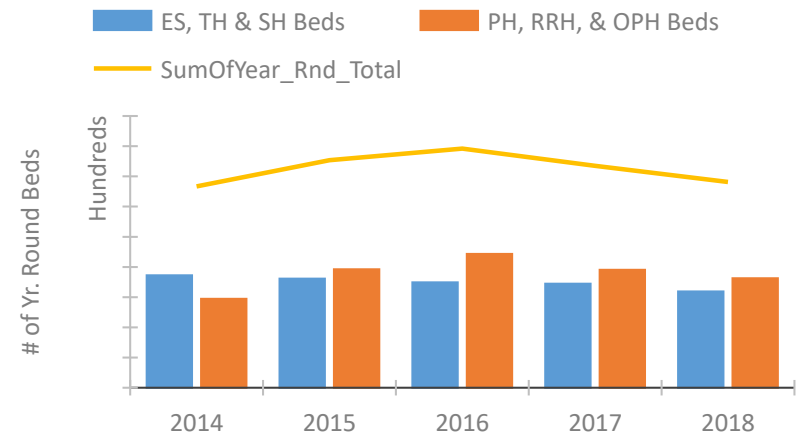


## Alabama Continuum of Care Performance Profile

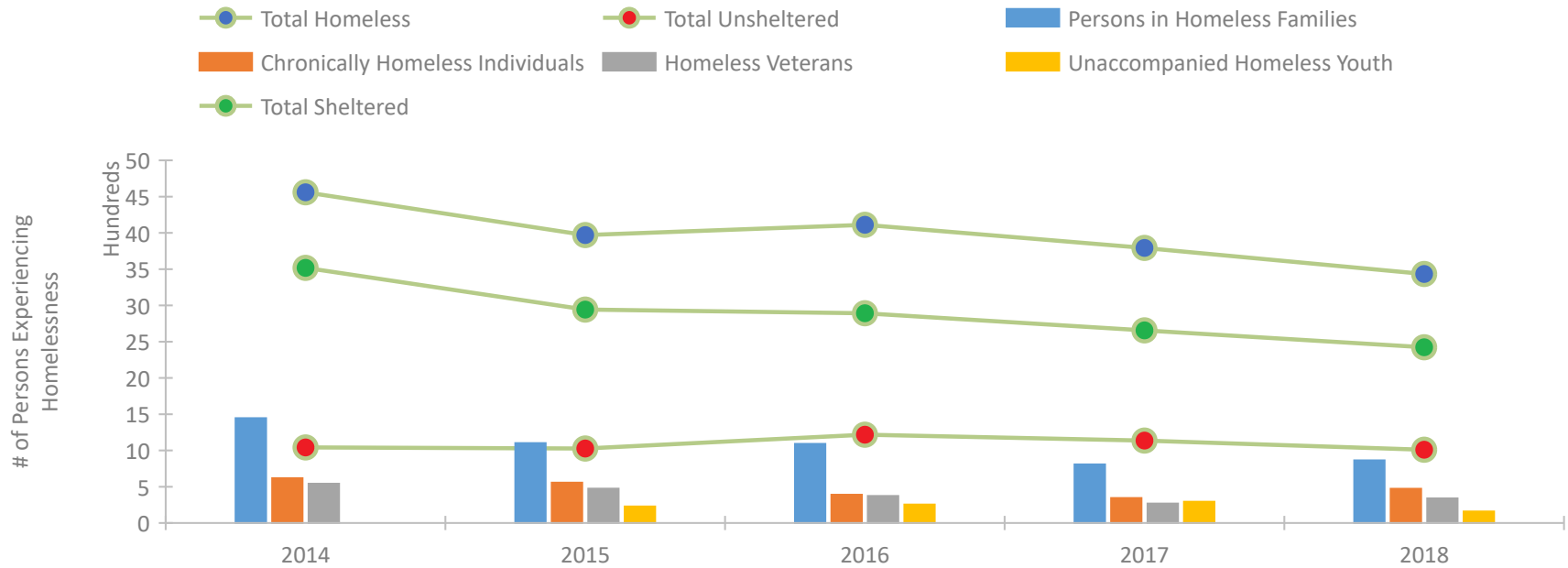


2018 CoC Boundaries 2017 CoC Boundaries

### Housing Inventory Count by Program Type



### Homeless Population – Point-in-Time (PIT) Count

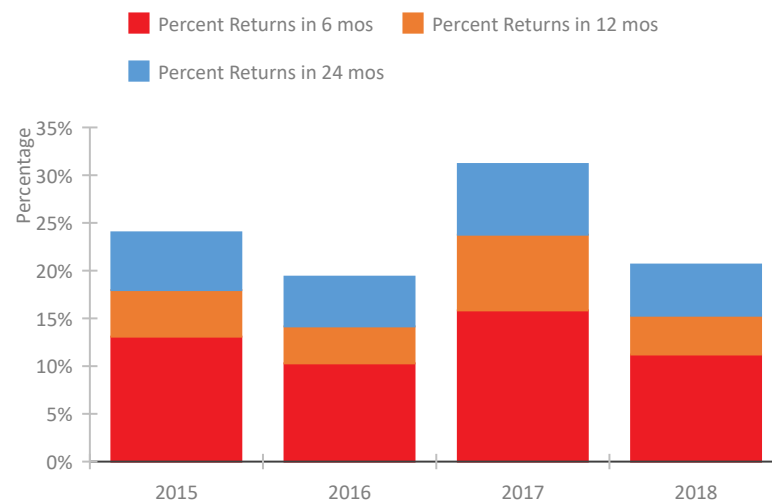


## Alabama Continuum of Care Performance Profile

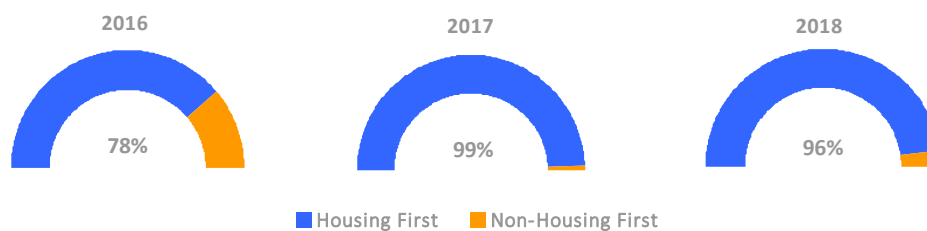
### Exits to Permanent Housing by Program Type



### Returns to Homelessness Over Time



### Proportion of Housing First Projects by Year



### Number of Projects by Year

	2016	2017	2018
Housing First Projects	31	234	44
Non-Housing First Projects	9	2	2

## Data Summary: Alabama

### Point-In-Time Count Summary

	2014	2015	2016	2017	2018	2017-18 Change	% Change
Number of Sheltered Persons in Families	1,145	867	876	706	731	25	4%
Number of Unsheltered Persons in Families	301	235	216	102	133	31	30%
Number of Sheltered Individuals	2,360	2,043	1,984	1,904	1,650	-254	-13%
Number of Unsheltered Individuals	739	780	1,002	1,033	876	-157	-15%
<b>Total Homeless Persons</b>	<b>4,545</b>	<b>3,925</b>	<b>4,078</b>	<b>3,745</b>	<b>3,390</b>	<b>-355</b>	<b>-9%</b>
Number of Sheltered Families	357	287	293	229	243	14	6%
Number of Unsheltered Families	100	73	63	33	37	4	12%
<b>Number of Total Families</b>	<b>457</b>	<b>360</b>	<b>356</b>	<b>262</b>	<b>280</b>	<b>18</b>	<b>7%</b>
Sheltered Chronically Homeless Individuals	245	157	163	152	277	125	82%
Unsheltered Chronically Homeless Individuals	373	400	227	192	195	3	2%
<b>Total Chronically Homeless Individuals</b>	<b>618</b>	<b>557</b>	<b>390</b>	<b>344</b>	<b>472</b>	<b>128</b>	<b>37%</b>
Sheltered Veterans	450	399	321	202	267	65	32%
Unsheltered Veterans	92	75	52	67	72	5	7%
<b>Total Veterans</b>	<b>542</b>	<b>474</b>	<b>373</b>	<b>269</b>	<b>339</b>	<b>70</b>	<b>26%</b>
Sheltered Unaccompanied Youth (up to 24)	--	168	173	182	113	-69	-38%
Unsheltered Unaccompanied Youth (up to 24)	--	60	81	112	45	-67	-60%
<b>Total Unaccompanied Youth (up to 24)</b>	<b>--</b>	<b>228</b>	<b>254</b>	<b>294</b>	<b>158</b>	<b>-136</b>	<b>-46%</b>

### System Performance Measures Summary

	2014	2015	2016	2017	2018	2017-18 Change	% Change
Rate People Return to Homelessness in 6 Months	N/A	13.1%	10.3%	15.8%	11.2%	-4.6%	N/A
Number of People who are Homeless for the First Time	N/A	7,537	7,726	6,781	5,720	-1,061	-15.6%
Rate People Exit from ES, SH, TH, and RRH to PH	N/A	25.2%	29.4%	25.9%	24.1%	-1.9%	N/A
Rate People in PSH and OPH Retain or Exit to PH	N/A	89.3%	86.4%	94.5%	95.1%	0.6%	N/A

### Housing Inventory Count Summary

	2014	2015	2016	2017	2018	2017-18 Change	% Change
Emergency Shelter (ES)	1,838	1,868	1,912	2,073	2,114	41	2%
Safe Haven (SH)	34	34	34	37	34	-3	-8%
Transitional Housing (TH)	1,852	1,711	1,543	1,334	1,040	-294	-22%
Permanent Supportive Housing (PSH)	2,891	2,995	3,394	3,156	3,317	161	5%
Rapid Re-Housing (RRH)	53	720	927	637	309	-328	-51%

### Award Summary

	2014	2015	2016	2017	2018	2017-18 Change	% Change
<b>Continuum of Care (CoC)</b>	\$16,844,653	\$17,096,421	\$17,172,393	\$17,802,978	\$17,027,297	(\$775,681)	-4%
<b>Emergency Solutions Grants (ESG)</b>	\$3,366,707	\$3,651,045	\$3,600,416	\$4,302,008	\$3,575,850	(\$726,158)	-17%