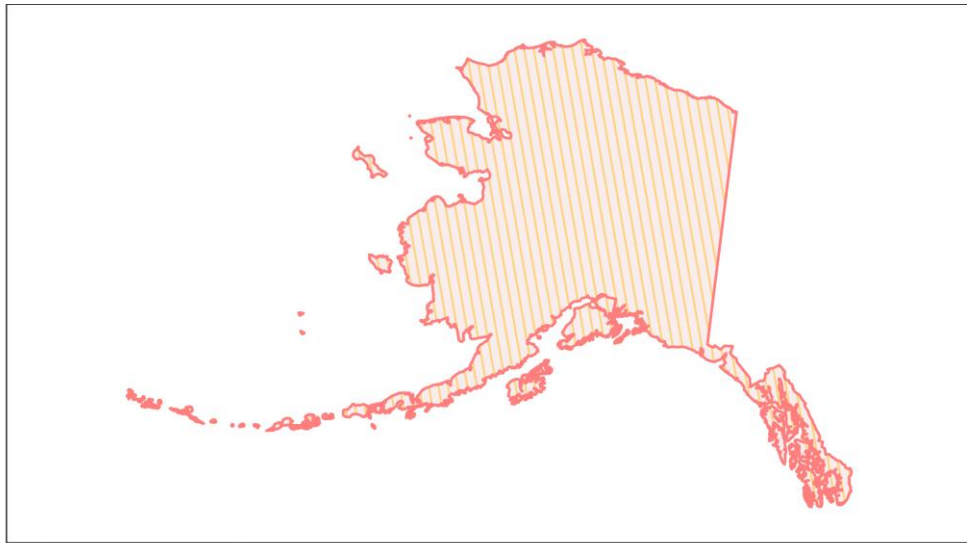
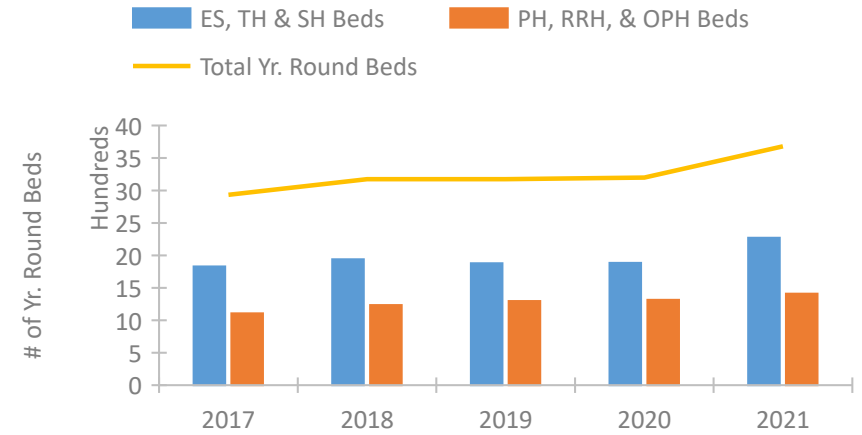


Alaska Continuum of Care Performance Profile

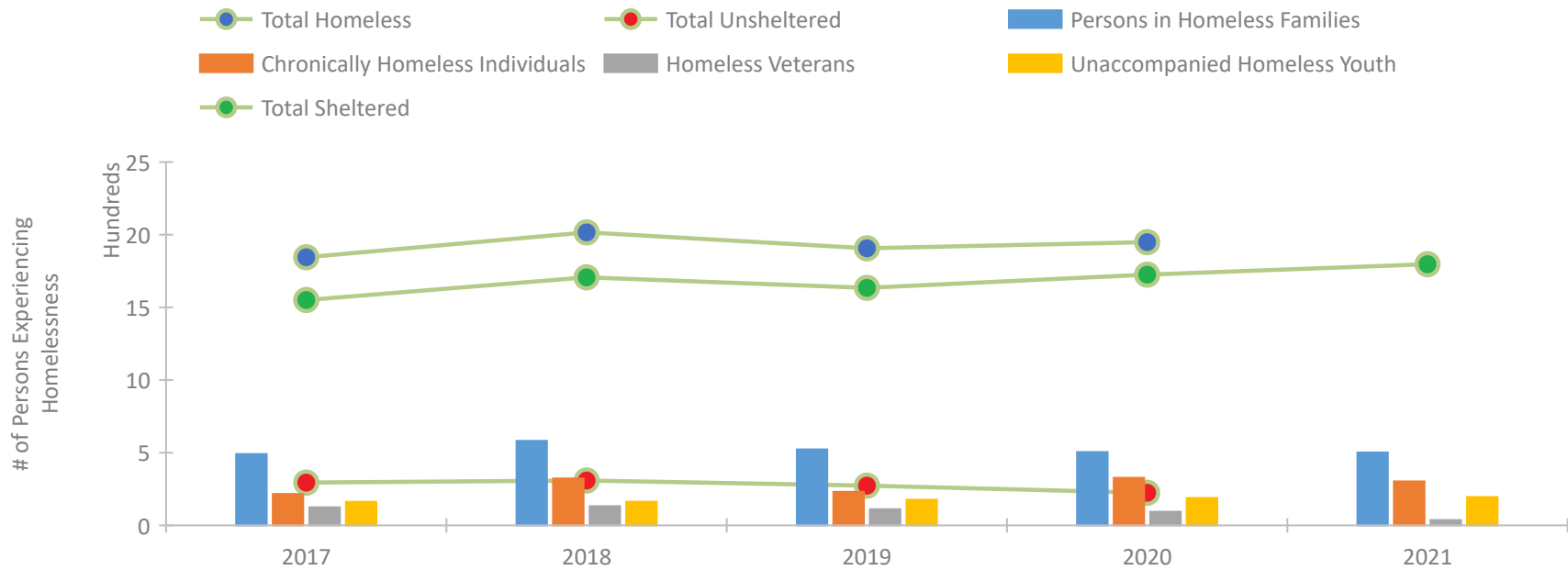


2021 CoC Boundaries 2020 CoC Boundaries

Housing Inventory Count by Program Type



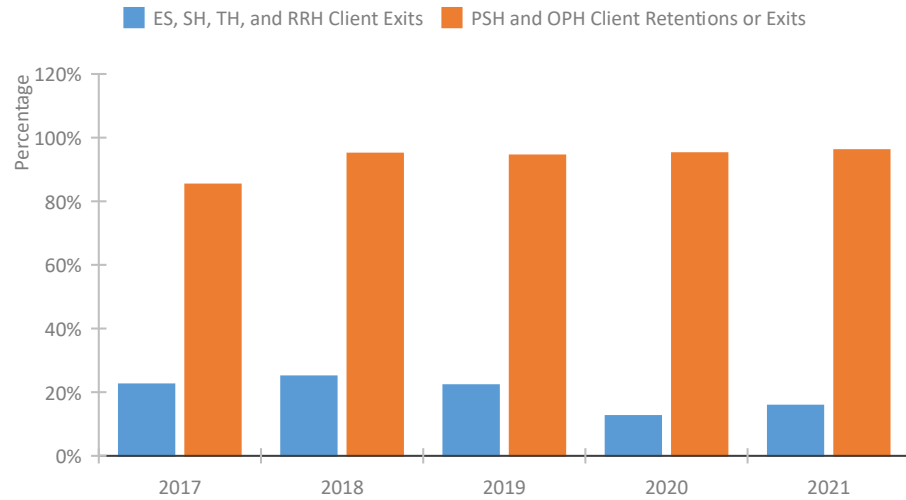
Homeless Population – Point-in-Time (PIT) Count*



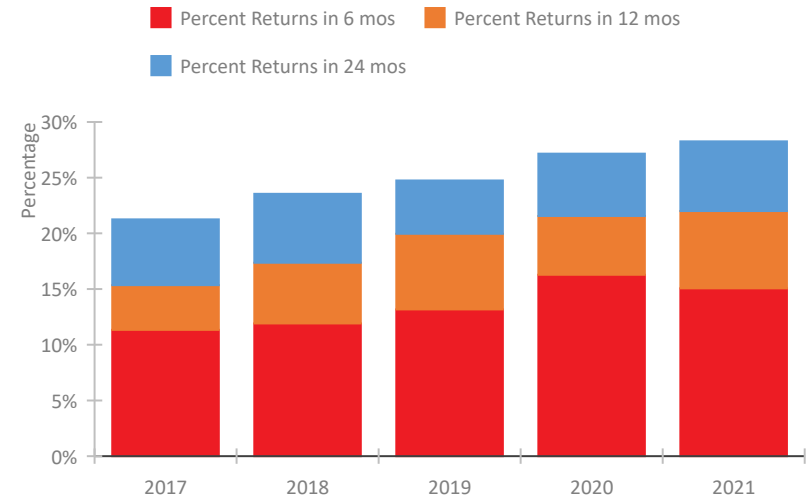
*In 2021, HUD gave communities the option to cancel or modify the unsheltered survey portion of their counts based on the potential risk of COVID-19 transmission associated with conducting an in-person survey. As a result, HUD has excluded the unsheltered population sub-totals and all unsheltered sub-population data for this reporting period. The user is cautioned that the unsheltered and total homeless counts reported here may be missing data.

Alaska Continuum of Care Performance Profile

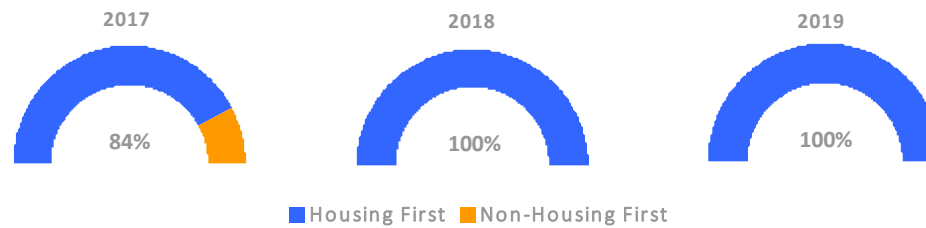
Exits to Permanent Housing by Program Type



Returns to Homelessness Over Time



Proportion of Housing First Projects by Year†



Number of Projects by Year

	2017	2018	2019
Housing First Projects	16	21	26
Non-Housing First Projects	3	0	0

†2021 Data unavailable at the time of report publication. In 2020 HUD awarded renewal projects noncompetitively, therefore no new data was collected and Housing First data remains the same from 2019 to 2020.

Data Summary: Alaska

Point-In-Time Count Summary*

	2017	2018	2019	2020	2021	2020-21 Change	% Change
Number of Sheltered Persons in Families	491	534	516	501	502	1	0%
Number of Unsheltered Persons in Families	0	48	7	3	0	-3	-100%
Number of Sheltered Individuals	1,060	1,173	1,118	1,224	1,295	71	6%
Number of Unsheltered Individuals	294	261	266	221	--	--	--
Total Homeless Persons	1,845	2,016	1,907	1,949	1,797	-152	-8%
Number of Sheltered Families	165	175	158	159	116	-43	-27%
Number of Unsheltered Families	0	18	3	1	--	--	--
Number of Total Families	165	193	161	160	116	-44	-28%
Sheltered Chronically Homeless Individuals	117	243	134	241	303	62	26%
Unsheltered Chronically Homeless Individuals	99	80	97	86	--	--	--
Total Chronically Homeless Individuals	216	323	231	327	303	-24	-7%
Sheltered Veterans	95	110	85	82	36	-46	-56%
Unsheltered Veterans	29	22	26	12	--	--	--
Total Veterans	124	132	111	94	36	-58	-62%
Sheltered Unaccompanied Youth (up to 24)	142	150	155	182	195	13	7%
Unsheltered Unaccompanied Youth (up to 24)	20	13	21	6	--	--	--
Total Unaccompanied Youth (up to 24)	162	163	176	188	195	7	4%

System Performance Measures Summary

	2017	2018	2019	2020	2021	2020-21 Change	% Change
Rate People Return to Homelessness in 6 Months	11.3%	11.9%	13.2%	16.3%	15.1%	-1.2%	N/A
Number of People who are Homeless for the First Time	5,220	5,066	3,661	4,801	4,980	179	3.7%
Rate People Exit from ES, SH, TH, and RRH to PH	22.4%	24.9%	22.2%	12.5%	15.8%	3.3%	N/A
Rate People in PSH and OPH Retain or Exit to PH	85.2%	94.9%	94.4%	95.1%	96.1%	1%	N/A

Housing Inventory Count Summary

	2017	2018	2019	2020	2021	2020-21 Change	% Change
Emergency Shelter (ES)	1,130	1,398	1,374	1,410	1,769	359	25%
Transitional Housing (TH)	698	542	504	475	501	26	5%
Permanent Supportive Housing (PSH)	939	948	987	963	937	-26	-3%
Rapid Re-Housing (RRH)	66	215	238	259	385	126	49%
Other Permanent Housing (OPH)	101	71	71	92	88	-4	-4%

Award Summary

	2017	2018	2019	2020	2021	2020-21 Change	% Change
Continuum of Care (CoC)	\$3,731,246	\$3,925,329	\$4,862,710	\$4,742,326	\$4,738,933	(\$3,393)	0%
Emergency Solutions Grants (ESG)	\$508,394	\$380,374	\$397,173	\$416,370	\$424,350	\$7,980	2%
Youth Homelessness Demonstration Program (YHDP)	--	\$1,654,023	--	--	--	--	--

*In 2021, HUD gave communities the option to cancel or modify the unsheltered survey portion of their counts based on the potential risk of COVID-19 transmission associated with conducting an in-person survey. As a result, HUD has excluded the unsheltered population sub-totals and all unsheltered sub-population data for this reporting period. The user is cautioned that the unsheltered and total homeless counts reported here may be missing data.